

# M.V. "BRITISH GENERAL"

## MIDSHIP SECTION.

SCALE:  $\frac{1}{2}'' = 1'.$

LENGTH B.P. 405'-0". BREADTH M.D. 61'-9". DEPTH MLD. 33'-11".  
TO CLASS 100A LLOYDS "CARRYING PETROLEUM IN BULK" WITH NOTATION.

LONGITUDINAL FRAMING AT BOTTOM AND AT DECK.  
ALL B.A.'S & CHANNELS ARE NEW BRITISH STANDARD SECTION.

### EQUIPMENT NUMERICAL.

L x (B+D)	=	44,486
POOP. (89'-5" x 8 x .75)	=	59.7
BRIDGE (49'-0" x 8 x .75)	=	29.4
FORECASTLE (64'-5" x 8 x .75)	=	32.7
POOP HOUSE (103'-0" x 8 x .50)	=	41.2
BRIDGE HOUSE (49'-0" x 8 x .50)	=	19.6
UPPER BRIDGE HOUSE (49'-0" x 8 x .50)	=	19.6
NAUTS " " (49'-0" x 8 x .50)	=	19.6
CABING ON BOAT DECK (63'-75" x 4.5 x .50)	=	14.2
TOTAL	=	46,846
GRADE	=	48,800

### EQUIPMENT.

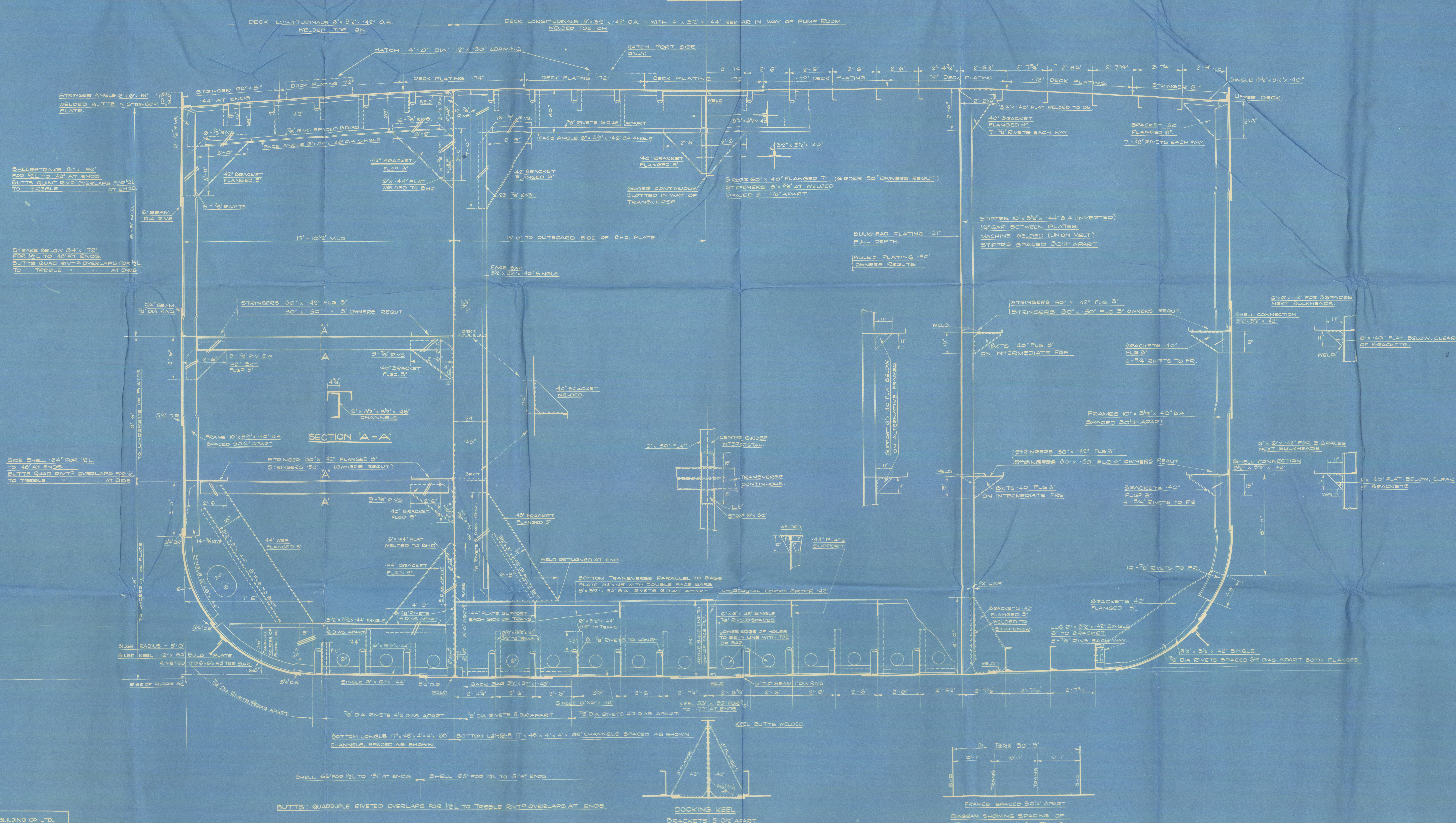
3 BOWER ANCHORS (STOCKLESS) COLLECTIVE WT. 232 CWTs.  
1 STREAM " (EX-STOCK) 23 1/2 CWTs.  
300 FATHOMS OF 2 1/2" STUD CHAIN CABLE.  
120 " " 4 3/4" STEEL WIRE STEAM.  
130 " " 5 1/2" " TOWLINE.  
2000 " " 3" " HAWSERS.

### LLOYDS NUMERALS FOR SCANTLINGS.

L x D	=	405 x 33.92	=	15,772
L x (B+D)	=	405 x (61.75 + 33.92)	=	44,486
L/D	=	13.7		

DECK THICKNESSES ARE FOR TWO OPENINGS 4'-0" WIDE  
ABREAST IN BREADTH OF SHIP.

13 1/2' CAMBER





S/V Isles

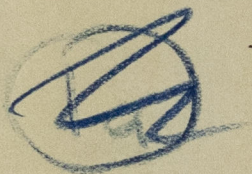
Furness S. B. Co Ltd.

Journal no 434.

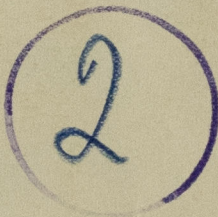
"British General" ★

Membership Section (as fitted.)

Inst. Rpt. 1906/.



RECORDS DEPT.  
LONDON



RETAIN

© 2021

003687-003697-0002

Lloyd's Register  
Foundation