

No. 3133

THE BRITISH CORPORATION REGISTER
OF SHIPPING AND AIRCRAFT

Report No. No. in Register Book 5452

Ship..... "NORMAN QUEEN".

Builder..... ARDROSSAN DOCKYARD LTD.

Yard No. 397



© 2020

HULL AND EQUIPMENT

Lloyd's Register
Foundation

003788-003799 -0125

THE BRITISH CORPORATION REGISTER
OF SHIPPING AND AIRCRAFT

Report No. No. in Register Book.

Received at Head Office. 12/1/44

Surveyor's Report on the Construction of the
Single Screw STEAMSHIP "NORMAN QUEEN".

Surveyor's District GLASGOW. (AYRSHIRE COAST).
Builders ARDROSSAN DOCKYARD LTD.
Yard No. 397. Where Built ARDROSSAN.
Owners BRITISH CHANNEL ISLANDS SHIPPING CO., LTD.
Port of Registry LONDON. Flag BRITISH
Managers BRITISH CHANNEL ISLANDS SHIPPING CO., LTD.
Manager's Address 35 CRUTCHED FRIARS, LONDON, E.C.3.
Official No. 169965
Rig F. & A. SCHOONER, 2 MASTS. Code Letters MMKK
Scantling Sections approved by Committee 3-3-43.
To be classed B.S.*
With a Freeboard of 4'-8" TO TOP OF STRINGER PLATE ON R.Q. DE.
Date of First Visit 15-3-43.
Date of Last Visit 12-10-44
Total number of Visits 107
Keel Laid 5-5-43
Date of Build 12-10-44
Launched 25-5-44
Date of this Report 25-10-44

PARTICULARS.

Registered Dimensions 204.50 x 32.70 x 13.15

Tonnages—

Tons.

Under Tonnage Deck

In Tween Decks

In Tween Decks

In Tween Decks

In Turret

Suez Canal Tonnage—

Tonnage in Poop

Under Deck Tonnage

686.49

40.72

" ~~Breaks~~ BREAKS

159.61

" Bridge

26.09

" Forecastle (HOUSES)

3.16

" Hatchways (EXCESS)

62.25

" Deck Houses

45.10

" Chart Houses

-

" TRUNKS

24.01

Gross Tonnage

1047.43

Deductions—

Crew Space

95.21

Engine Room %

335.18

Light and Air

43.77

Navigation Spaces and Stores

SECTION 79.

Peak Tanks

Deep Tanks

474.16

Net Registered Tonnage

573.27

Date of Expiry of Vessel's B.O.T. Passenger Certificate

NONE.

PARTICULARS—Continued.

Moulded Dimensions 202'-0" x 32'-7" x 15'-1 1/2". (19'-5" To R.Q.D^S).Height of Superstructure R.Q.D^S = 4'-3 1/2"; FOCLE = 7'-0"; BRIDGE = 7'-0"; POOP = 7'-0".Proportions $\frac{L}{B} =$ $\frac{L}{D} =$ $\frac{D}{B}$ $\frac{L}{D}$ =
(to top of Superstructure)

Camber 7 7/8" IN 32'-7".

Rise of Floor 1/2"

Number and Description of Decks for Register Book

1 DECK.

Number of Decks under Freeboard Deck

NONE

" " above " "

NONE

Heights of Tween Decks

-

Particulars of Superstructures

SEE L.L.4C/D FORM.

Distance between Bulkheads of Superstructures

SEE L.L.4C/D FORM.

Freeboard Ratios of Superstructures

Watertight Bulkheads.—State Number of Frame and Deck to which each Bulkhead extends—See page 5.

Bulkhead, Frame No.	extends to	Deck.	Bulkhead, Frame No.	extends to	Deck.
Fore Peak	" 90	" UPPER "	No. 8	" - "	" "
No. 1	" 69	" " "	" 9	" - "	" "
" 2	" 47	" R.Q.D ^S "	" 10	" - "	" "
" 3	" 29	" " "	" 11	" - "	" "
AFTER PEAK.	" 5	" CABIN FLAT "	" 12	" - "	" "
" 5	" - "	" - "	" 13	" - "	" "
" 6	" - "	" - "	" 14	" - "	" "
" 7	" - "	" - "	After Peak	" - "	" "

© 2020
Lloyd's Register
Foundation

PARTICULARS—Continued.

State which Bulkheads enclose Machinery Space. **WT AFT PEAK BHD. N°5 AND**

NON-W.T. BHD. (BUNKER) 26.

State Number of Bulkheads to be recorded as effective *Five. (Nos 5, 29, 47, 69, & 90).*

Number and Length of effective Watertight Compartments beginning Forward

FORE PEAK	21'-3"
Nº1 HOLD	42'-0"
Nº2 "	44'-0"
Nº3 "	36'-0"
ENG. ROOM & BUNKER	48'-0"
AFT PEAK.	10'-9"
	<u>202'-0"</u>

Number of Non-Watertight Bulkheads **ONE. (BUNKER. N° 26).**

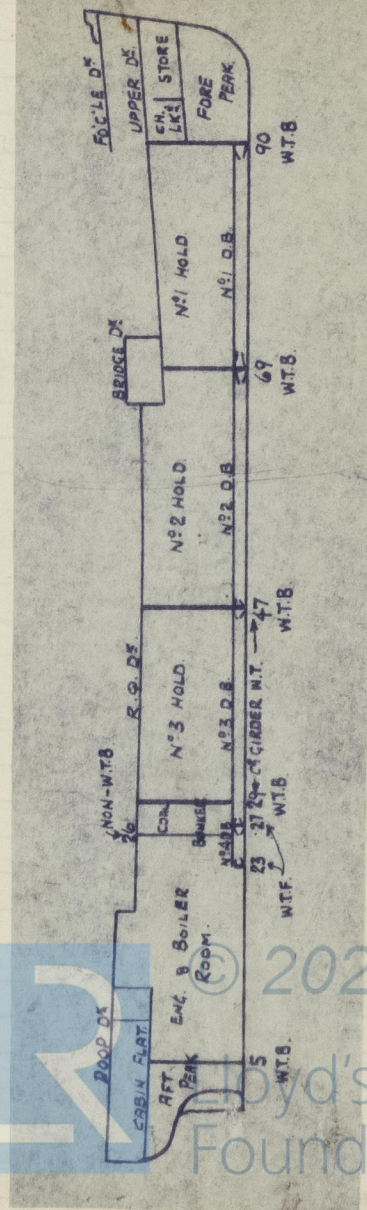
Double Bottom Extends from Frame 23 to Frame 90.

Length and Capacity of Tanks

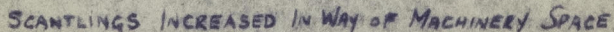
[illegible]

State where Centre Girder Watertight . N^o 3 D.B. TANK. FRS. 27-47.

Sketch showing Arrangement of Bulkheads, Tanks, &c.



SECTIONS.



202' x 32'-7" x 15'-1 1/2" (19'-5" to 20'-0")

[illegible]

SKETCHES OF FORE AND AFTER PEAK STRUCTURE

SEE PLAN N°16 OF APPROVED FRAMING AT ENOS 15-5-43.

FORE PEAK TANK TESTED & FOUND SATISFACTORY.	17-5-44.	T.B.T.
AFTER " " " " " "	24-5-44.	T.B.T.

WHERE DETAIL PLANS AS BUILT ARE NOT AVAILABLE.

PARTICULARS OF SCANTLING, ETC.

Where it is subsequently stated in this report that any portion of the structure is in accordance with Plans and particulars are therefore not detailed, the name of plan is to be entered in the appropriate place. Such plans should in all cases represent the structure as built.

All differences from approved Plans and/or the Rules are to be recorded in this report, together with any necessary explanatory Sketches.

Where no detailed Plan is on record, full particulars of Scantling, Construction and Riveting are to be reported in conjunction with such Sketches as are necessary for clearance.

Where riveting is in exact accordance with the approved Plans and/or Rules this is to be stated in each case, and particulars of any departure therefrom are to be detailed in all cases.



© 2020

Lloyd's Register
Foundation

PARTICULARS OF SCANTLINGS, ETC.

Where it is subsequently stated in this report that any portion of the structure is in accordance with Plans, and particulars are therefore not detailed, the name of plan is to be entered in the appropriate place. Such plans should in all cases represent the structure as built.

All differences from approved Plans and/or the Rules are to be recorded in this report, together with any necessary explanatory Sketches.

Where no detailed Plan is on record, full particulars of Scantlings, Construction and Riveting are to be reported, in conjunction with such Sketches as are necessary for clearness.

Where riveting is in exact accordance with the approved Plans and/or Rules this is to be stated in each case, and particulars of any departure therefrom are to be detailed in all cases.

GENERAL.

MATERIAL.

In the case of **Steel Ships** state particulars of Parts where Iron is used —

In the case of **Wood Ships** state particulars of Wood used in different parts —

In the case of **Reinforced Concrete Ships** state particulars of Concrete used in different parts and also Nature and Quality of Reinforcement —

State, to the best of your knowledge, whether the Materials used have been tested, and are in accordance with the Rule requirements **Yes.**

Give particulars of all Tests carried out under your supervision or date of your Report thereon.

TEST N^{OS} ETC.

STERNFRAME.

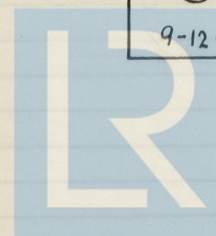
B.C.
7890
G. $\frac{9}{18}$ H.B.
22-6-43

RUDDER FRAME

B.C.
8520
G. $\frac{9}{18}$ H.B.
22-10-43

TILLER.

B.C.
8545
G. $\frac{9}{18}$ H.B.
9-12-43



© 2020
Lloyd's Register
Foundation

GENERAL—Continued.

JANUARY

KEELS, STEMS, STERN FRAMES, AND RUDDERS.

State particulars, which do not appear on reference Plans, of Dimensions; Scarphs of Bar Keels; Stems; Stern Frames; Butts of Flat Plate Keels; Connections at Heel of Stems and Stern Frames to Hull; Rudder Stocks, Couplings, Pintles, Gudgeons, Rudder Arms, Riveting; and whether forged or cast Arrangement and Scantlings of Spectacle Bossing or Propeller Brackets and state material.

State whether particulars not given are in accordance with approved Plans. **YES.**

State name of approved Plans and date of approval.

STEM - - - - - 10-6-43

RUDDER & STERNFRAME - - - - 27-3-43

KEEL & CENTRE GIRDER - - - - 12-3-43

MIDSHIP SECTION - - - - - 1-3-43

SHELL EXPANSION - - - - - 25-5-43

FRAMING AT ENDS - - - - - 15-5-43



© 2020

Lloyd's Register
Foundation

CENTRE KEELSONS (SINGLE BOTTOM).

State particulars, which do not appear on reference Plans, of Scantlings and Riveting, illustrated by Sketches of Construction, amidship, at ends, and under Boilers and Engines; of Connections to Keel; Horizontal Top Plates; Rider Keelson; Floor Connections and End Connections.

State whether particulars not given are in accordance with approved Plans. **YES**

State name of approved Plans and date of approval.

KEEL & CENTRE GIRDER ----- 12-3-43

MIDSHIP SECTION ----- 1-3-43

DOUBLE BOTTOM ----- 28-4-43

BOILER STOOLS ----- 29-4-43

SECTION THRO' ENG. ROOM ----- 4-3-43

SINGLE BOTTOMS.

State particulars, which do not appear on reference Plans, of Floors, Frames, Reverse Frames, Side Girders, Engine and Thrust Seats, Boiler Bearers, End Floors, Bossing, and Transom Floors.

State whether particulars not given are in accordance with approved Plans. **YES**

State name of approved Plans and date of approval.

KEEL & CENTRE GIRDER ----- 12-3-43

MIDSHIP SECTION ----- 1-3-43

DOUBLE BOTTOM ----- 28-4-43

BOILER STOOLS ----- 29-4-43

SECTION THRO' ENG. ROOM ----- 4-3-43

FRAMING. ----- 28-4-43



© 2020

Lloyd's Register
Foundation

SINGLE BOTTOMS—Continued.

DOUBLE BOTTOM.

State particulars, which do not appear on reference Plans, of Scantlings and Riveting, illustrated by Sketches of Construction, of Centre Girders Amidships, at Ends, and under Boilers and Engines; End Connections; Manholes in Centre Girder and Compensation where fitted; Centre Girder where watertight; Scantlings, &c., of Solid Floors; Frames and Reverse Frames on Solid Floors; Stiffeners on Tank End Floors; Open Floors, extent and spacing; Open Floor Frames, Reverses, Struts, and Brackets; Tank Top Plating, Butts, and Seams; Sheathing; Margin Plates; Margin Brackets to hold Frames; Connection to Tank Margin and Frames; Gussets; Intercostal Girders, amidships, under Engines, Thrust, Boilers, and Boiler Bearers; Arrangement and Spacing at Ends; Engine and Thrust Seatings; Stiffening under Wide Spaced Pillars and Air Pipes in each Compartment of Double Bottom.

State whether particulars not given are in accordance with approved Plans. **Yes.**

State name of approved Plans and date of approval.

				Date.	Surveyor's Initial.
No. 1 Compartment (forward) tested and found satisfactory				22-5-44.	J.B.G.
" 2 "	"	"	"	19-5-44	J.B.G.
" 3 "	"	"	"	22-5-44	J.B.G.
TANK END N° 3/4	"	"	"	23-5-44	J.B.G.
" 4 "	"	"	"	22-5-44	J.B.G.
" 5 "	"	"	"	—	—
" 6 "	"	"	"	—	—

KEEL & CENTRE GIRDER --- 12-3-43

DOUBLE BOTTOM --- 28-4-43

BOILER STOOLS --- 29-4-43

FRAMING --- 28-4-43

MIDSHIP SECTION --- 1-3-43

BULKHEADS --- 7-5-43

PUMPING PLAN --- 24-9-43

SEE J. LEWIS & SONS N°S
182, 184/5 FOR "AS FITTED"
N° 7 PLAN.

DOUBLE BOTTOM—Continued.

HOLD FRAMES AND REVERSE FRAMES

State particulars, which do not appear on reference Plans, of all Framing in Holds; Bunkers; Boiler Space;

Engine Space; Deep Tanks; at Tunnel Flats; also Connections at Head and Heel.

State whether particulars not given are in accordance with approved Plans. **YES**

State name of approved Plans and date of approval.

MIDSHIP SECTION - - - - - 1-3-43

SECTION THRO' ENG. ROOM - - - - - 4-3-43

FRAMING - - - - - 28-4-43

FRAMING AT ENDS - - - - - 15-5-43

DOUBLE BOTTOM. - - - - - 28-4-43

© 2020

Lloyd's Register
Foundation

HOLD FRAMES AND REVERSE FRAMES—Continued.

BETWEEN DECK FRAMING.

State particulars, which do not appear on reference Plans, of Framing in various Tween Decks.

State whether particulars not given are in accordance with approved Plans. **YES**

State name of approved Plans and date of approval.

MIDSHIP SECTION - - - - - 1-3-43

FRAMING - - - - - 28-4-43

FRAMING AT ENDS - - - - - 15-5-43.



© 2020

Lloyd's Register
Foundation

~~WEB FRAMES AND SIDE STRINGERS.~~

State particulars, which do not appear on reference Plans, of Scantlings; Spacing; Attachments at Head and Heel; Reverse Frames; Ends of Side Stringers; Beams at Heads of Web Frames.

State whether particulars not given are in accordance with approved Plans. **YES**

State name of approved Plans and date of approval.

MIDSHIP SECTION - - - - - 1-3-43

FRAMING - - - - - 28-4-43.

WEB FRAMES AND SIDE STRINGERS—Continued.



© 2020

Lloyd's Register
Foundation

HOLD KEELSONS AND STRINGERS.

State particulars, which do not appear on reference Plans, of Side Keelsons, Scantlings and Spacing Amidships,

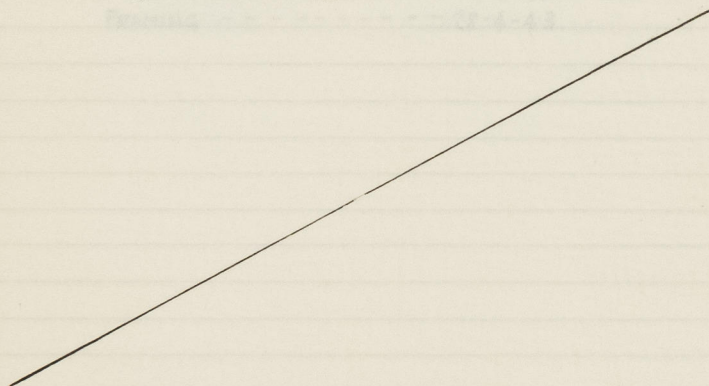
E. & B. Space, and Forward, and Connections to Floor Plates; Side Stringers, Scantlings, Extent, Spacing;

Butts of Continuous Side Keelsons and Side Stringers; Connections to Bulkheads; Hold Stringers,

Scantlings, and End Connections

State whether particulars not given are in accordance with approved Plans.

State name of approved Plans and date of approval.



HOLD KEELSONS AND STRINGERS—Continued.

Midship Section 1-3-43
 Section Thru Eng. Room 4-2-43
 Framing 28-4-43
 Framing at Ends 18-2-43
 Decks, Hatchways & Girders 22-2-43
 Casings, Holes, & Port Deck 12-4-43
 Midship Deckhouses 12-7-43



© 2020

Lloyd's Register
 Foundation

BEAMS.

State particulars, which do not appear on reference Plans, of Spacing and Scantlings of Beams, Half Beams, Beam Knees and Lug Connections to Girders and Hatch Coamings on all Decks; Beams of Deep Tank Tops, Tunnel Tops, Bulkhead Recesses, Open Decks, Transom Beams, Wide Spaced Hold Beams, and Strong Beams in Machinery Space.

State whether particulars not given are in accordance with approved Plans. **YES.**

State name of approved Plans and date of approval.

MIDSHIP SECTION - - - - - 1-3-43
 SECTION THRO' ENG. ROOM. - - - - - 4-3-43
 FRAMING - - - - - 28-4-43
 FRAMING AT ENDS - - - - - 15-5-43
 DECKS, HATCHES, & GIRDERS - - - - - 25-5-43
 CASINGS, HOUSES, & BOAT DECK - - - - - 12-6-43
 MIDSHIP DECKHOUSES. - - - - - 12-7-43

BEAMS—Continued.



© 2020

Lloyd's Register
Foundation

STANCHIONS, PILLARS, AND GIRDERS.

State particulars, which do not appear on reference Plans, of number of Rows of Stanchions and where fitted ; distance out from Centre Line of Girders or Runners ; Spacing, Type, and General Scantlings of Stanchions, Pillars and Girders ; Attachment at Heads and Heels of Stanchions and Pillars ; Pillars in Engine Room ; Attachment of Girders to Bulkheads and at Hatch Corners, Supports under Bulkhead Recesses and Deep Tanks ; Supports at ends and corners of Deckhouses and Erections ; extent and details of Longitudinal Cargo Divisions.

State whether particulars not given are in accordance with approved Plans. **YES.**

State name of approved Plans and date of approval.

MIDSHIP SECTION - - - - - 1-3-43
 DECKS, HATCHES, & GIRDERS - - - - - 25-5-43
 CASINGS, HOUSES, & BOAT DECK - - - - - 12-6-43
 MIDSHIP DECKHOUSES - - - - - 12-7-43
 DOUBLE BOTTOM - - - - - 28-4-43.

STANCHIONS, PILLARS, AND GIRDERS—Continued.



© 2020

Lloyd's Register
Foundation

WATERTIGHT BULKHEADS.

State particulars, which do not appear on reference Plans, of Watertight Bulkheads as given on page 3;

Webs in 'Tween Decks above Bulkheads; Attachments; Sluice Valves and Cocks.

State whether particulars not given are in accordance with approved Plans. **YES.**

State name of approved Plans and date of approval.

(See also page 5)

DOUBLE BOTTOM - - - - - 28-4-43
 BULKHEADS - - - - - 7-5-43 { FOR "AS FITTED", SEE
 FRAMING AT ENDS - - - - - 15-5-43 BULKHEAD PLAN, N^o 7 OF
 DECKS, HATCHES, & GIRDERS - - 25-5-43 J. LEWIS & SONS, N^o 82, 4, & 5
 PUMPING PLAN. - - - - - 24-9-43.

WATERTIGHT DOORS

State particulars, which do not appear on reference Plans, of Watertight Doors, where situated, Type,

where controlled from, Makers, Buttresses at Sides of Doors; particulars of Testing.

State whether particulars not given are in accordance with approved Plans.

State name of approved Plans and date of approval.

NONE FITTED.



© 2020

Lloyd's Register
Foundation

WATERTIGHT BULKHEADS—TESTING.

State particulars and dates of tests of Watertight Bulkheads.

F.P. BULKHEAD 90. LOWER PART PRESSURE TESTED WITH F.P. TANK. 17-5-44.
 UPPER " HOSE TESTED. - - - - - 18-9-44.
W.T. BULKHEAD 69. HOSE TESTED - - - - - 18-9-44
W.T. BULKHEAD 47. HOSE TESTED - - - - - 18-9-44
W.T. BULKHEAD 29 HOSE TESTED - - - - - 18-9-44
AFT PEAK BULKHEAD 5. PRESSURE TESTED WITH A.P. TANK - - - 24-5-44.

ALL ABOVE TESTS SATISFACTORY

J.R.T.

WATERTIGHT BULKHEADS—TESTING—Continued.



© 2020

Lloyd's Register
Foundation

PANTING ARRANGEMENTS (OUTSIDE PEAKS).

State Particulars, which do not appear on reference Plans, illustrated by Sketches of Construction, of Scantling Arrangements, Heights of End Floors; Panting Beams and Stringers; Pillars; Shell Lugs on Stringers and Flats; Attachments of Stiffeners and Framing to Stringers.

State whether particulars not given are in accordance with approved Plans. **YES**

State name of approved Plans and date of approval.

FRAMING - - - - - 28-4-43

FRAMING AT ENDS - - - 15-5-43.

PANTING ARRANGEMENTS—Continued.

State Particulars, which do not appear on reference Plans, illustrated by Sketches of Construction, of Scantling Arrangements, Heights of End Floors; Panting Beams and Stringers; Pillars; Shell Lugs on Stringers and Flats; Attachments of Stiffeners and Framing to Stringers.

State whether particulars not given are in accordance with approved Plans.

State name of approved Plans and date of approval.



© 2020

Lloyd's Register
Foundation

SHELL PLATING.

State particulars, which do not appear on reference Plans, of number of Strakes of Plating, average Length and Width Amidships; Thickness of Side Plating Amidships and at Ends; Bottom Plating Amidships, Ends, and Flat of Floor Forward; End Connections; Seam Connections; Construction at Breaks of Erections; Compensation in way of Cargo Doors, Sidelights and other Openings; Doublings where fitted; Forefoot Plate, After Hood Plating, Boss Plating; Sheerstrakes, Topside Plating, Garboard Strakes with Bar Keels; Gunwale Angles and Mouldings.

State whether particulars not given are in accordance with approved Plans **Yes.**

State name of approved Plans and date of approval.

MIDSHIP SECTION - - - - - 1-3-43

SHELL EXPANSION - - - - - 25-5-43

SHELL PLATING—Continued.

State particulars, which do not appear on reference Plans, of width of Strakes of Plating, average Length and Width Amidships; Thickness of Side Plating Amidships and at Ends; Bottom Plating Amidships, Ends, and Flat of Floor Forward; End Connections; Seam Connections; Construction at Breaks of Erections; Compensation in way of Cargo Doors, Sidelights and other Openings; Doublings where fitted; Forefoot Plate, After Hood Plating, Boss Plating; Sheerstrakes, Topside Plating, Garboard Strakes with Bar Keels; Gunwale Angles and Mouldings.

State whether particulars not given are in accordance with approved Plans **Yes.**

State name of approved Plans and date of approval.

MIDSHIP SECTION - - - - - 1-3-43
 DECKS, HATCHES & GUNDECKS - - - - - 15-2-43
 CRANES, HOISTS & BOAT DECK - - - - - 15-2-43
 MACHINERY DECKS - - - - - 15-2-43

ALL MACHINERY DECKS SATISFACTORILY TESTED 27-9-44



© 2020

Lloyd's Register
Foundation

DECKS

State particulars, which do not appear on reference Plans, of which Decks are Weather Decks, Freeboard Decks, Second, Third, &c., and Platform Decks; Scantlings of Plating and Areas in square inches of Plating abreast Machinery Openings, Hatches Amidships and at Ends; Stringer Plates Amidships and at Ends; End Connections and Seam Riveting in each case; Doublings at Hatch Corners; Size of Corner Angles; Wood Sheathing and Deck Compositions; Watertight Cement Chocks on Freeboard Deck whether Chocks are fitted in other Decks, and particulars of all Chocks fitted in each Deck and Flat; Rusted Iron Chocks, W.T. Collars, Coaming Angles and Mast Collars; Riveting of Coaming Angles, Gutter Angles, Chock Angles, and particulars of Water Testing of Decks

State whether particulars not given are in accordance with approved Plans. **YES.**

State name of approved Plans and date of approval.

MIDSHIP SECTION. - - - - - 1-3-43
 DECKS, HATCHES, & GIRDERS - - - - - 25-5-43
 CASINGS, HOUSES, & BOAT DECK. - - - - - 12-6-43
 MIDSHIP DECKHOUSES - - - - - 12-7-43.

ALL WEATHER DECKS SATISFACTORILY HOSE TESTED 28-9-44 JAB

DECKS—Continued.



© 2020

Lloyd's Register
 Foundation

CEILING AND SPARRING.

State particulars, which do not appear on reference Plans, of Close Ceiling and how fastened in Holds and Bunkers; if Tank Top Ceiled where Double Bottom is used for Oil Fuel; Sparring and how fastened in Holds, Tween Decks; Manhole Covers, and Protection.

State whether particulars not given are in accordance with approved Plans. **Yes.**

State name of approved Plans and date of approval.

NO SPARRING FITTED

NO CEILING FITTED ON TANK TOP. MANHOLE COVERS OF PATENT DESIGN.

CLOSE CEILING OF WOOD & STEEL OVER BILGES IN HOLDS AND BUNKERS.

SUPERSTRUCTURES.

State particulars, which do not appear on reference Plans or L.L. 4 D. Form:— 1st Superstructure, Length and Height ; 2nd Superstructure, Length and Height ;

illustrate by Sketches of Cross Section through Superstructures; Coaming and Top Angles; Plating Amidships, at Ends; Riveting of Seams; Doublings at Windows and Doorways; Top Plating; Stiffening; Beams; Web Plates and Partial Bulkheads Breaks in continuity; and Bulkheads at End of Erections on Freeboard Deck.

State whether particulars not given are in accordance with approved Plans. **Yes**

State name of approved Plans and date of approval.

LL4C/D FORM No 2192.

SHELL EXPANSION	---	25-5-43
FRAMING	---	28-4-43
FRAMING AT ENDS	---	15-5-43
BULKHEADS	---	7-5-43
DECKS, HATCHES, & GIRDERS.	---	25-5-43
CASINGS, HOUSES, & BOAT DECK.	---	12-6-43
MIDSHIP DECKHOUSES.	---	12-7-43.



© 2020

Lloyd's Register
Foundation

SUPERSTRUCTURES—Continued.

HATCHWAYS AND OTHER DECK OPENINGS.

State particulars, which do not appear on reference Plans or L.L. 4 D. Form, of Dimensions of Openings in different Decks; Scantlings of Coamings; Coaming Angles; Side Stiffeners; Stays; Spacing and Scantlings of Hatch Webs; Hatch Covers; Details of Hatch Corner Construction; Mast Openings; Engine and Boiler Openings, and Casings and Companion Ways.

State whether particulars not given are in accordance with approved Plans. **Yes.**

State name of approved Plans and date of approval.

LL4C/D FORM N° 2192.

MIDSHIP SECTION - - - - - 1-3-43

SECTION THRO' ENG. ROOM. - - - - 4-3-43

DECKS, HATCHES, & GIRDERS - - - - 25-5-43

CASINGS, HOUSES, & BOAT DECK. - - 12-6-43

MIDSHIP DECKHOUSES - - - - - 12-7-43

HATCH WEBS - - - - - 8-9-43

RIGGING - - - - - 17-11-43

VENTILATION - - - - - 16-12-43.

2 BRACKET STAYS (2'0" TO PORT & 4'0" TO STARBOARD) FITTED TO COAMING AT FORE
END OF N°2 HATCHWAY, DUE TO VIBRATION ON COAMING.

STAYS - $\frac{5}{16}$ " PLATE, FLANGED 3"; 3'6" HIGH; CONNECTING ANGLES
TO DECK & COAMING, 3"x3"x $\frac{5}{16}$ ".



© 2020

Lloyd's Register
Foundation

DECK OPENINGS—Continued

State particulars, which do not appear on reference Plans, of Through Beams and Stanchions in Machinery Space; Engine Seating; Thrust Seating; Boiler Stools; Thrust Stools; Bossing Arrangements; Scantlings of Stiffeners; Plating and Coaming Angles of Tunnels and Tunnel Recesses; Escape Hatches; Stiffening of Tunnels under Stanchions; and particulars and dates of Water Testing Tunnels.

State whether particulars not given are in accordance with approved Plans. **YES.**

State name of approved Plans and date of approval.

SECTION THRO' ENG. ROOM - - - - - 4-3-43

KEEL & CENTRE GIRDER - - - - - 12-3-43

DOUBLE BOTTOM - - - - - 28-4-43

BOILER STOOLS - - - - - 29-4-43

DECK, HATCHES, & GIRDERS - - - - - 25-5-43

CASINGS, HOUSES, & BOAT DECK - - - - - 12-6-43

VENTILATION - - - - - 12-6-43

RIDDING - - - - - 12-6-43

HATCH WEBS - - - - - 12-6-43

MIDSHIP DECKMOUNTS - - - - - 12-6-43

CASINGS, HOUSES, & BOAT DECK - - - - - 12-6-43

DECK, HATCHES, & GIRDERS - - - - - 12-6-43

SECTION THRO' ENG. ROOM - - - - - 4-3-43

KEEL & CENTRE GIRDER - - - - - 12-3-43

DOUBLE BOTTOM - - - - - 28-4-43

BOILER STOOLS - - - - - 29-4-43

DECK, HATCHES, & GIRDERS - - - - - 25-5-43

CASINGS, HOUSES, & BOAT DECK - - - - - 12-6-43

VENTILATION - - - - - 12-6-43

RIDDING - - - - - 12-6-43

HATCH WEBS - - - - - 12-6-43

MIDSHIP DECKMOUNTS - - - - - 12-6-43

CASINGS, HOUSES, & BOAT DECK - - - - - 12-6-43

DECK, HATCHES, & GIRDERS - - - - - 12-6-43

SECTION THRO' ENG. ROOM - - - - - 4-3-43

KEEL & CENTRE GIRDER - - - - - 12-3-43

DOUBLE BOTTOM - - - - - 28-4-43

MACHINERY SPACE AND TUNNEL.

State particulars, which do not appear on reference Plans, of Through Beams and Stanchions in Machinery Space; Engine Seating; Thrust Seating; Boiler Stools; Thrust Stools; Bossing Arrangements; Scantlings of Stiffeners; Plating and Coaming Angles of Tunnels and Tunnel Recesses; Escape Hatches; Stiffening of Tunnels under Stanchions; and particulars and dates of Water Testing Tunnels.

State whether particulars not given are in accordance with approved Plans. **YES.**

State name of approved Plans and date of approval.

SECTION THRO' ENG. ROOM - - - - - 4-3-43

KEEL & CENTRE GIRDER - - - - - 12-3-43

DOUBLE BOTTOM - - - - - 28-4-43

BOILER STOOLS - - - - - 29-4-43

DECK, HATCHES, & GIRDERS - - - - - 25-5-43

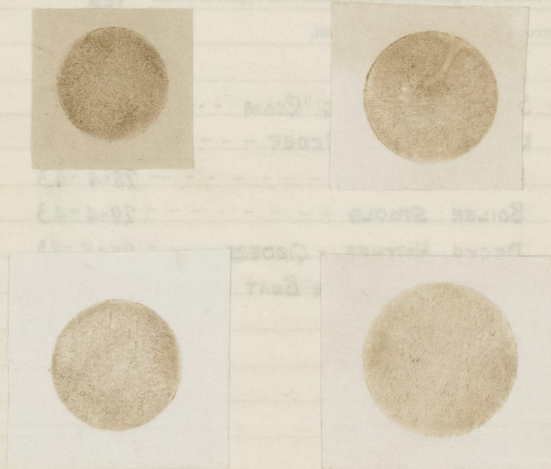
CASINGS, HOUSES, & BOAT DECK - - - - - 12-6-43



© 2020

Lloyd's Register
Foundation

RIVETING AND CAULKING.



SAMPLES OF SULPHUR PRINTS OF RIVETS TAKEN DURING CONSTRUCTION.

J.B.

RIVETING AND CAULKING SATISFACTORY

J.B.

ELECTRIC WELDING.

State particulars of Electrodes, Manufacturers, sizes of Electrodes, Voltage, Amperage, Rates of Deposit, &c., arrangements for skilled supervision of work in the Yard; Particulars of Tests, including Samples of work in Yard,

Portions of Structure where Electric Welding used, Thickness of Material Welded, Size and Types of Welds, Angles of Edges and Clearance of Base in Butt Welds, Depth and Width of Lap Welds, and Connections of Plates and Bars.

ELECTRODES "IRONEX" & "QUASI-ARC", No 8 & 10.

SATISFACTORY TESTS CARRIED OUT DURING CONSTRUCTION.

PORTIONS WELDED. KEEL BUTTS AT ENDS.

GUSSETS TO MARGIN PLATE.

BULKHEAD STIFF⁸ BOTTOM CONNECTIONS. (STRUTS).

UPPER DECK & CABIN FLAT FRAME COLLARS

SHELL SEAM, DECK STRINGER PLATE & ANGLE, AT BREAK
OF UPPER, BRIDGE, & R.P. DECKS.

SHELL TO STEM.

RUBBING STRIPS TO SWELL

HATCH STAYS

BULWARK STAYS,

AND MISCELLANEOUS WORK THROUGHOUT SHIP.



© 2020

Lloyd's Register
Foundation

ELECTRIC WELDING—Continued.

BULWARKS, PORTS, SCUPPERS, ETC.

State particulars, which do not appear on reference Plans or L.L. 4 D. Form, of Length and Height of Bulwarks; Freeing Port Area; Construction of Freeing Ports; Details of Gangway Doors, Scuppers from Watertight Decks; Soil Pipe Elbows below Freeboard Deck.

State whether particulars not given are in accordance with approved Plans. YES

State name of approved Plans and date of approval.

LL4C/D FORM No 2/92.

MIDSHIP SECTION - - - - - 1-3-43

SHELL EXPANSION - - - - - 25-5-43

PUMPING PLAN - - - - - 24-9-43.



© 2020

Lloyd's Register
Foundation

BULWARKS, PORTS, SCUPPERS, ETC.—Continued.

VENTILATORS AND SIDE SCUTTLES.

State particulars, which do not appear on reference Plans or L.L. 4 D. Form, of Coaming Heights; Thicknesses; Deck Connections of Hold Ventilators on Weather Portions of Freeboard Decks; Bridge Decks; Forecastle and Poop Decks; Ventilators to Holds and Tunnels and Side Scuttles in 'Tween Decks means of Closing.

State whether particulars not given are in accordance with approved Plans. **YES**

State name of approved Plans and date of approval.

LL 4 C/D FORM N° 2192.

VENTILATION ARRANGEMENT - - - - 16-12-43

PUMPING PLAN - - - - - 24-9-43.



© 2020

Lloyd's Register
Foundation

VENTILATORS AND SIDE SCUTTLES—Continued.

PUMPING ARRANGEMENTS.

State particulars, which do not appear on reference Plans, of Hand Pumps or Power Pumps and from which Deck they are operated; Hand Pump to Fore Peak, Drain Boxes and Tank Tops Sounding Pipes, Testing of Pumps.

Are the Chambers of the Plunger Pipes Copper? —

Is a Plate fitted under the Lower End of each Sounding Pipe? YES.

Are Pump Chambers, Tail Pipes, and Rods protected by substantial Casings? YES.

State whether particulars not given are in accordance with approved Plans. YES

State name of approved Plans and date of approval.

PUMPING PLAN - - - - - 24-9-43

1 1/2" S.R. HAND PUMP TO CHAIN LOCKER TESTED - - - - - 9-10-44

PUMPING ARRANGEMENTS " - - - - - 9-10-44.

ABOVE TESTS SATISFACTORY.

J.B.S.



© 2020

Lloyd's Register
Foundation

CEMENTING AND PAINTING.

State if and where Portland or Bituminous Cement is used and how it is applied.

State particulars and Composition of Cement, Cement Wash, Paint, or Bitumen, in Tanks and elsewhere.

BILGES, PEAK TANKS, & ALL D.B. TANKS CEMENT WASHED
AND COATED WITH PORTLAND CEMENT ON BOTTOM. (NOT FILLETS)

BUNKERS COATED WITH BITUMINOUS SOLUTION.

MASTS, SPARS, AND RIGGING.

Steam Vessels.—State particulars, which do not appear on reference Plans as to Heights, Diameters, and
Scantlings of Masts; Derrick Loads and Outreaches; Scantlings and arrangements of Derrick Tables
and Outriggers.

Sailing Vessels.—The same particulars as for Steam Vessels, where applicable, also particulars of Rigging,
details of Centre and Sail Area.

State whether particulars not given are in accordance with approved Plans. **YES.**

State name of ~~approved~~ Plans and date of ~~approval~~.

RIGGING PLAN - - - - - 17-11-43.



© 2020

Lloyd's Register
Foundation

EQUIPMENT. STEAM

State Equipment Numbers and corresponding Letter for Register Book. C.23

Chain Cables, Stream Chains, Wires, &c.—State particulars of number of Certificates, where and when Tested, Length, Size, Weight, and Maker's Name. SEE LETTER FILE.

Anchors.—State number of Certificates, where and when Tested, Weight of Head Shank and Stock, and Maker's Name and Type of Anchor. SEE LETTER FILE.

Steering Gear.—Plans or Sketches showing arrangement and details of Steering Gear, including Auxiliary Gear, to be given, to include Diameter of Chains and Rods; Diameter and Scantlings of Quadrant; Diameter, Scantlings and Attachments of Quarter and Leading Blocks, Buffer Springs and Stretching Screws; Type and Make of Steering Gear and Control; Particulars of Relieving Tackle, Brakes, &c.; Particulars of Test Certificates for Chains, Rods, Stretching Screws, Buffer Springs, Spare Links, Shackles, &c.; state Spares provided; Particulars of Trials.

Windlass and Capstan.—State particulars of Type and Maker's Name and if satisfactory under trial.

Winches.—State Number, Size, and Type fitted.

Lifeboats.—Number and Dimensions.

EMERGENCY EQUIPMENT.

EQUIPMENT NUMBER --- = C.23.

180⁵/₈ FATHOMS OF 1⁷/₈" STUD LINK CHAIN CABLE. WEIGHT = 194 cwt. 5 lbs.

MARK-LPH-N 2744.

75 FATHOMS OF 3³/₈" S.W.R. STREAM WIRE

90 " " 9" HEMP TOWLINE

90 " " 7" HAWSER

90 " " 5¹/₂" WARP.

	CWTS.	Q.	LBS.		
1 BOWER ANCHOR.	23	- 2	- 23	(STOCKLESS).	MARK-LPH.S. 45629
1 " "	23	- 1	- 18	(")	" LPH.S. 46391
1 STREAM " "	8	- 0	- 25	(")	" LPH.S. 45790
1 KEDGE " "	3	- 1	- 12	(EX. STOCK.)	" LPH.CH. 57059
STOCK =	3	- 10			

TEST OF ANCHORS & CABLES CARRIED OUT DURING SEA TRIALS 12-10-44.
TEST SATISFACTORY.

EQUIPMENT—Continued.

STEERING GEAR. CHAIN & ROD GEAR FROM RUDDER HEAD TO BULKHEAD TYPE STEERING ENGINE IN MACHINERY CASING. TELEMOTOR CONTROL FROM BRIDGE TO STEERING ENGINE.

AUXILIARY GEAR OF BLOCKS & TACKLE FROM QUADRANT TO CAPSTAN.

SEE APPROVED PLANS, Nos 24, 29, & 31, DATED 6-10-43,
15-2-44, & 6-4-44.

SPARE GEAR. 1 COMBINED BUFFER & SCREW; 1 SPRING; 2 CHAINS;
4 SHACKLES; 4 ROD PINS; 4 CONNECTING LINKS.

TEST CERTIFICATES FOR CHAINS, SCREWS, SPRINGS, ETC.,
EXAMINED, CHECKED, AND PLACED ON BOARD SHIP.
PROOF LOAD APPLIED; 9 T. 2 C. 2 Q.
GEAR TESTED DURING SEA TRIALS, 12-10-44.

WINDLASS. BY EMMERSON WALKER; ORDINARY STEAM TYPE.

CAPSTAN BY " " ; WARPING " " .
SATISFACTORY UNDER TEST;

WINCHES. 3 IN NUMBER; 3 TON STEAM ENCLOSED TYPE; BY CARRON & Co; FALKIRK.

LIFEBOATS. 2 IN NUMBER; 22'-0" x 7'-25" x 2'-75"; CLASS IA.
ALSO 2 LIFERAFTS FITTED.



© 2020

Lloyd's Register
Foundation

EQUIPMENT—Continued.

DEEP TANKS, OIL TANKS, AND OIL BUNKERS.

State particulars, which do not appear on reference Plans, of Position and Arrangement; Scantlings of Plating, Stiffeners, Deck Girders, Wash Bulkheads and Plates; Top Plating; Frame Connections; Means to prevent Overloading; Height of Filling, Air and Sounding Pipes; in the case of **Oil Tanks**, give Density and Flash Points of Oils; Arrangements of Expansion Trunks, Cofferdams, and details of Ventilation; state Particulars of Packing used.

State Arrangements of Pump Rooms, means of keeping Low Flash Point Oil separate from other Oil, and provisions made where Low Flash Point Oils are used for Oil Fuel.

State whether particulars not given are in accordance with approved Plans.

State name of approved Plans and date of approval.



© 2020

Lloyd's Register
Foundation

DEEP TANKS, OIL TANKS, AND OIL BUNKERS—Continued.

No. 1 Tank, Port, Tested and found satisfactory.	Test Head above Top of Tank.			Date.	Initials.
	Deflection at Full Tank.	Deflection with Test Head.			
" Starb'd, "	"	"			
2 " Port, "	"	"			
" Starb'd, "	"	"			
3 " Port, "	"	"			
" Starb'd, "	"	"			
4 " Port, "	"	"			
" Starb'd, "	"	"			
5 " Port, "	"	"			
" Starb'd, "	"	"			
6 " Port, "	"	"			
" Starb'd, "	"	"			
7 " Port, "	"	"			
" Starb'd, "	"	"			
8 " Port, "	"	"			
" Starb'd, "	"	"			
9 " Port, "	"	"			
" Starb'd, "	"	"			
10 " Port, "	"	"			
" Starb'd, "	"	"			
11 " Port, "	"	"			
" Starb'd, "	"	"			
12 " Port, "	"	"			
" Starb'd, "	"	"			

DEEP TANKS, OIL TANKS, AND OIL BUNKERS—Continued.

State which Tanks are used as Oil Fuel Bunkers.

Give position and size of Air Pipes or Ventilators from each Tank.



© 2020

Lloyd's Register
Foundation

SURVEYORS' NOTES.

Give dates of visits also notes of any occurrence of which a record should be kept.

15-3-43	PLANS & LOFT	23-11-43	FRAMING 98% ERECTED.
23-3-43	"	29-11-43	BULKHEADS BEING ERECTED
1-4-43	"	2-12-43	" ERECTED
7-4-43	"	9-12-43	DECKS COMMENCED ERECTION
14-4-43	"	15-12-43	TANK TOP 50% RIVETED.
20-4-43	"	20-12-43	BULKHEADS BEING RIVETED
28-4-43	"	7-1-44	15% SHELL ERECTED
5-5-43	KEEL ERECTED.	17-1-44	40% " "
13-5-43	LOFT	24-1-44	45% " "
21-5-43	"	31-1-44	60% " "
28-5-43	"	3-2-44	80% " "
2-6-43	"	11-2-44	90% " "
11-6-43	"	18-2-44	25% " RIVETED
16-6-43	C ² GIRDER RIVETED	23-2-44	
24-6-43	LOFT, ETC	28-2-44	DECKS BEING RIVETED
2-7-43	"	1-3-44	
8-7-43	"	7-3-44	SHELL & DECKS 35% RIVETED
26-7-43	WORK ON FLOORS COMMENCED	9-3-44	"
5-8-43	" " FRAMES "	20-3-44	SHELL 45% RIVETED
16-8-43	75% FLOORS WORKED	24-3-44	
27-8-43	WORK ON TANK TOP COMMENCED.	29-3-44	SHELL 50% RIVETED
1-9-43	ALL FLOORS WORKED.	31-3-44	
8-9-43	FLOORS RIVETING AT SKIDS.	3-4-44	
20-9-43	40% FLOORS ERECTED	6-4-44	CASINGS BEING ERECTED
27-9-43	65% " "	11-4-44	
2-10-43	90% " "	14-4-44	SHELL 65% RIVETED
13-10-43	50% TANK TOP "	17-4-44	
21-10-43	TANK TOP ERECTED	19-4-44	
28-10-43	FRAMING RIVETING AT SKIDS	21-4-44	SHELL 70% RIVETED
2-11-43	" COMMENCED ERECTION.	26-4-44	
11-11-43	" 50% ERECTED	28-4-44	SHELL 75% RIVETED.
18-11-43	" 90% "	3-5-44	

SURVEYORS' NOTES—Continued.

4-5-44	SHELL 85% RIVETED	18-9-44	{ IN DRYDOCK; EXAM ^d HULL & RUDDER HOSE TESTED W.T. 8405, 29, 47, 69 & 90
8-5-44		20-9-44	FITTING OUT
11-5-44	SHELL 95% RIVETED	26-9-44	" "
16-5-44	" RIVETING COMPLETE.	28-9-44	{ HOSE TEST OF DECKS & SIDELIGHTS { INT: EXAM. OF N ^o 1 D.B. TANK & BILGES
17-5-44	F.P. TANK TESTED	29-9-44	{ CHECKED ANCHORS & CABLES { EXAMINED BUNKERS.
19-5-44	{ N ^o 2 D.B. TANK TESTED { MLD. DEPTH CHECKED. 15' 1 1/2" P.A.S. N ^o 1, 3, & 4 D.B. TANKS TESTED	3-10-44	{ INTERNAL EXAM ^t OF AFT PEAK, N ^o 2, 3, & 4 D.B. TANKS.
22-5-44		6-10-44	EXAM ^t OF E & B. ROOMS.
23-5-44	{ ECHO SOUNDING COMP ^t TESTED { FREEBOARD MARKS CHECKED AFT PEAK TANK TESTED.	9-10-44	TESTED HAND PUMPS PUMPING ARR ^{ts} .
24-5-44		10-10-44	TESTED MAIN A. AUX. STEER. GEAR.
25-5-44	SHIP LAUNCHED	12-10-44	SEA TRIALS; ST. GEAR & ANCHORS TESTED BY H.K. TAYLOR.
26-5-44	FITTING OUT		
30-5-44	" "		
1-6-44	" "		
5-6-44	" "		
8-6-44	" "		
13-6-44	" "		
15-6-44	" "		
23-6-44	" "		
30-6-44	" "		
12-7-44	" "		
18-7-44	" "		
20-7-44	" "		
4-8-44	" "		
10-8-44	" "		
16-8-44	" "		
22-8-44	" "		
25-8-44	" "		
29-8-44	" "		
31-8-44	" "		
5-9-44	" "		
8-9-44	" "		
11-9-44	" "		
14-9-44	EXAM ^d F.P. TANK INTERNALLY.		

© 2020

Lloyd's Register
Foundation

State particulars of Arrangement, Makers, and Survey of Refrigerating Plant.

State extent, particulars, illustrated by Sketches of Insulation

NOT FITTED.

© 2020

Lloyd's Register
Foundation

REFRIGERATION—Continued.

REFRIGERATION—Continued.



© 2020

Lloyd's Register
Foundation

LOAD LINE PARTICULARS WHERE

Registered Length **204.50** Breadth **32.70** Depth **13.15**
 Length on L.W.L. **202.0** Beam at Gunwale Amidships **32.7**
 Moulded Depth as measured in Ship **15'-1 1/2" To UPPER D^s.**
 Round of Beam **7 7/8"** Rise of Floor **1/2"**
 Sheer at Stem Sheer at Sternpost
 " 1/8 from Stem " 1/8 from Sternpost

Particulars of Sheer in Decks which are not parallel to Freeboard Deck

Fall in Sheer Thickness of Wood Deck

Extent of Wood Deck Thickness of Ceiling

Thickness of Sparring Depth of Framing

Drop in Tank Level Modifications in D.B. affecting Co^s (see Sketch).

Particulars of Erections (see Sketch)

Length Length of Overhang (Recesses, &c.) Height

Forecastle

Poop or R.Q.D.

Bridge

Scantlings of Bulkheads of Erections

Openings in Bulkheads of Erections and Means of Closing same

Are the Engine and Boiler Openings covered by the Poop or R.Q.D. and enclosed by a strong Iron or Steel House?

Give Number, Size, and Area of Freeing Ports in Wells

NOT STATED ON L.L.D. FORM.

Displacement in Salt Water Tons per inch

Tonnage under Deck

Means of making Freeboard Deck watertight in erections where Frames pass through

Freeboard assigned by the Committee, as per letter issued by Secretary dated **22-5-44.**From Top of **STR. PLATE ON R.Q.D^s** **4'-8"**Fresh Water Line above Centre of Disc **4"**Indian Summer " " **2 1/2"**Winter Line below Centre of Disc **3 1/2"**W.N.A. " " **5 1/2"**~~Structure~~ Deck Line **No** ins. above Top of **STEEL** **R. Q.** Deck at Side.Freeboard marks verified :- **23-5-44.**

Freeboard as assigned above subject to :-



© 2020

Lloyd's Register
Foundation

LOAD LINE PARTICULARS—Continued.

Elevation and Plan Sketches showing Lengths and Arrangements of Erections, Length, Heights and variations of Double Bottom, Peak Tanks, Protection of Openings in Bulkheads, if not stated on L.L. 4 D Form.

LLAC/D.
N° 2192.

LLAC/D.

FORM

SEE

I have satisfied myself, from personal examination, that this Ship has been built in accordance with the approved Plans and the Rule requirements, or their equivalent, that the materials used in the construction of the Hull and Equipment are in accordance with the Rules, and that the workmanship is in every respect satisfactory.

T. B. Tillery

Surveyor to the British Corporation Register

of Shipping and Aircraft.

It is submitted that this Report be approved.

J. D. Adams
Chief Surveyor.

7 MAR 1945

Approved by the Committee for the Class of BS* on the 7/2/45.

M. C. C. C.
Secretary.



© 2020

Lloyd's Register
Foundation

LOAD LINE PARTICULARS

I have satisfied myself from personal examination that the Ship has been built in accordance with the approved Plans and the Rule requirements or that equipment that the materials used in the construction of the Hull and Equipment are in accordance with the Rules, and that the workmanship is in every respect satisfactory.

It is submitted that this Report be approved.

Chief Surveyor

7 MAR 1912

Approved by the Committee for the Class of 1912 on the 1/2/12.

Secretary



© 2020

Lloyd's Register
Foundation



© 2020

Lloyd's Register
Foundation