

SS EMPIRE KUMASI.
MIDSHIP SECTION.

SCALE. $\frac{1}{2}$ " = 1FOOT.

MEASUREMENTS \pm .005 IN. ON L.W.L. \times 56'-0" M.L.R. \times 56'-3" EXT. \times 27'-9" MID TO 2ND DECK \times 36'-11" MID TO UPPER DECK TO CLASS 10041. WITH FREEBOARD AT LLOYDS SPECIAL SURVEY.

LLOYDS NUMERALS.			
FIRST LONGITUDINAL	NUMBER	L x D. 225.06 x 35.75	= 1522A
SECOND LONGITUDINAL	NUMBER	L x (B + D) 225.06 x (36 + 35.75)	= 39072
L/D TO UPPER DECK	225.06	\div 36.91	= 11.53
D. MOULDED DEPTH	27.75	\div 8	= 35.75
D. 27.75	(3.6 + 25 FOR HIGHER BRACKET)		= 23.9
D. AT HALF LENGTH FORWARD			= 24.17

THE SCANTLING ARE SUITABLE FOR A DRAUGHT 18" IN EXCESS OF THAT CONTINGENTED BY THE RULES FOR A COMPLETE SUPERSTRUCTURE VESSEL HAVING A TONNAGE DRAWING.

EQUIPMENT NUMBER.			
SECOND LONGITUDINAL	NUMBER 225.06 x (36 + 35.75)	=	39566
MIDSHIP ACCOMMODATION AND CASING	93 x 8 x $\frac{1}{2}$	=	396
FORECASTLE	35 x 7.5 x $\frac{1}{2}$	=	197
HOUSE AFT	30 x 7.5 x $\frac{1}{2}$	=	112
EQUIPMENT NUMBER		=	70271

EQUIPMENT.			
2 BOW ANCHORS	68 CMTS. EACH STOCKLESS		
1 STREAM ANCHOR	10 CMTS. EX. STOCK		
285 FATHOMS 2 3/4 STD CHAIN CABLE	400 CMTS. RULE 270 FATHOMS.		
30 FATHOMS 6" STEEL STRAIN WIRE	6 x 12		
120 FATHOMS 1 1/2" SPECIAL FLEXIBLE STEEL WIRE	6 x 24		
2 HAINERS	30 FATHOMS 2 3/4" SWR 6 x 12		
2 WARPS	75 FATHOMS 3 1/2" SWR 6 x 12		

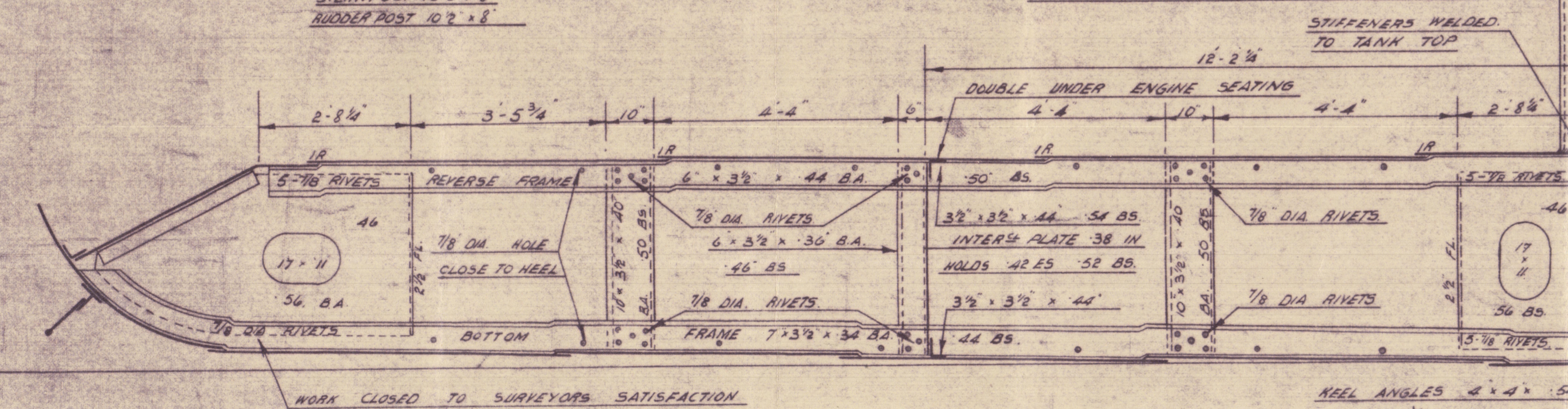
RIVETING NOTE.

RIVETS IN FRAMES TO FLOORS IN PEAK TRUNKS SPACED 5 DIA APART CR TO CR.
RIVETS IN FRAMES TO FLOORS AT PLAT OF DOUBLE BOTTOM FORWARD OF 1/2 L FORWARD SPACED 6 DIA APART CR TO CR & COMPLETE ROWS REELED.
RIVETS IN FRAMES TO SHELL AT PLAT DOUBLE BOTTOM FORWARD OF 1/2 L FORWARD SPACED 3 DIA APART CR TO CR & COMPLETE ROWS REELED.
RIVETS IN B.A. FRAMES TO SHELL AT PLAT DOUBLE BOTTOM FORWARD OF 1/2 L FORWARD SPACED 3 DIA APART CR TO CR.
RIVETS IN BOTTOM FRAMES TO SHELL AFT OF 1/2 LENGTH FORWARD SPACED 6 DIA APART CR TO CR.
RIVETS IN BOTTOM FRAMES TO FLOORS AFT OF 1/2 LENGTH FORWARD ADVERSE FRAMES TO FLOORS AND INNER BOTTOM PLATING SPACED 7 DIA CR TO CR.
RIVETS IN SIDE FRAMES TO SHELL SPACED 5 DIA APART CR TO CR AND 7 DIA CR TO CR CLEAR OF 3/8" FRAME SPACING, DEEP FRAMING AND TRUNKS.
RIVETS IN VERTICAL ANGLES CONNECTING FLOORS AND SIDE GIRDERS SPACED 7 DIA CR TO CR 5 DIA IN W.T. FLOORS AND UNDER ENGINE SEAT.
RIVETS IN WATERTIGHT FLOOR STIFFENERS SPACED 5 DIA APART CR TO CR.
RIVETS IN PLAT KEEL ANGLES VERTICAL ANGLES CONNECTING FLOORS AND CENTRE GIRDER AND SHELL DECK AND TRUNK TOP.
RIVETS IN BULKHEAD FRAMES OF WATERTIGHT BULKHEAD FRAME MARGIN PLATE ANGLE AND HULLER DECK STRINGER ANGLE SPACED 4 DIA CR TO CR.
RIVETS IN WATERTIGHT BULKHEAD BULKHEAD SPACED 7 DIA APART CR TO CR AND 6 DIA CR TO CR IN BULKHEAD TRUNK W.T. BULKHEADS.
RIVETS IN CENTRE GIRDER TOP ANGLES SPACED 5 DIA APART CR TO CR WATERTIGHT AND 7 DIA CR TO CR NON-WATERTIGHT.
RIVETS IN WATERTIGHT FLOOR FRAME AND REVERSE FRAME SPACED 5 DIA APART CR TO CR BOTH FLANGES.
RIVETS IN DECK BEAMS TO PLATING ON EVERY FRAME SPACED 7 DIA APART CR TO CR.

RIVETS IN 4 R. BUTTS OF OUTSIDE PLATING AND OF DECK STRINGER PLATES SPACED 4 DIA APART CR TO CR.
RIVETS IN 3 R. BUTTS OF OUTSIDE PLATING AND OF DECK STRINGER PLATES SPACED 3 DIA APART CR TO CR.
RIVETS IN BUTTS OF DECK PLATING SPACED 4 DIA APART CR TO CR.
RIVETS IN BEAMS OF SHELL DECKS AND INNER BOTTOM PLATING 4 DIA APART CR TO CR.
RIVETS IN BEAMS OF DECK PLATING IN WAY OF BULKHEAD TRUNKS SPACED 4 DIA APART CR TO CR.
RIVETS IN BEAMS AND BUTTS OF WATERTIGHT BULKHEAD AND TUNNEL PLATING SPACED 4 DIA APART CR TO CR AND 4 DIA CR TO CR IN BULKHEAD TRUNK WATERTIGHT BULKHEADS.

THE SCANTLING OF ANGLE AND BULB ANGLE SECTIONS GIVEN ON THIS PLAN ARE THE MINIMUM ACCEPTABLE FOR THE FULL DRAUGHT.

STEM 11' 2 1/4" STERNPOST 10' 1 1/2" BULKHEAD 10' 1 1/2"



DISPOSITION OF FLOORS.

SOLID FLOOR ON EVERY FRAME IN ENGINE SPACE AND FORWARD 1/2 LENGTH FORWARD UNDER BOWERS BEARERS AND W.T. BULKHEADS ELSEWHERE SOLID FLOOR ON EVERY THIRD FRAME BRACKET FLOORS INTERMEDIATE AND AS SHOWN ON PROFILE PLAN.

KEEL OUT.

52 x 78 FOR 3/4 L IN TO 68 AT ENDS BUTTS LAPPED AND 4 R. TO 31 AT ENDS 1 DIA RIVETS IN BUTTS OVER 78.

A. IN.

78 x 68 FOR 1/4 L IN TO 55 AT ENDS BUTTS LAPPED AND 4 R. 31.

B. OUT.

78 x 68 FOR 1/4 L IN TO 55 AT ENDS BUTTS LAPPED AND 4 R. 31.

C. IN.

78 x 68 FOR 1/4 L IN TO 55 AT ENDS BUTTS LAPPED AND 4 R. 31.

D. OUT.

78 x 68 FOR 1/4 L IN TO 55 AT ENDS BUTTS LAPPED AND 4 R. 31.

THICKNESS OF BOTTOM SHELL PLATING FROM FORWARD HALF LENGTH FORWARD TO RULE POSITION OF COLLISION BULKHEAD 63 + 10% = 63 AT 21 FRAME SPACING 63 + 05 = 74 AT 36 FRAME SPACING.

FORE END GARGO MATCHES COINING 30 AT SIDES 36 AT CENTRE

AFT END GARGO MATCHES COINING 42 AT SIDES 48 AT CENTRE

UPPER DECK PLATING 78 x 76 ABREAST 23-0 OPENINGS FOR 1/2 L IN TO 34 AT ENDS 65 x 60 ABREAST 18-0 OPENINGS BUTTS LAPPED AND 4 R. 1A AT ENDS 3 R. ABREAST 18-0 OPENINGS 40 INSIDE LINE OF OPENINGS FOR 1/2 L IN TO 36 AT ENDS BUTTS LAPPED 0 2A-1A AT ENDS

UPPER DECK STRINGER PLATE 78 x 76 FOR 3/4 L IN TO 46 AT ENDS 70 ABREAST 18-0 OPENINGS BUTTS LAPPED AND 4 R. 20 2R AT ENDS STRINGER ANGLE 6 x 6 x 62 FOR 3/4 L IN TO 32 x 3/2 x 64 AT ENDS

FORECASTLE DECK STRINGER PLATE 36 BUTTS LAPPED AND 1A STRINGER ANGLE 3/2 x 3/2 x 36 DECK PLATING 32 UNHEATED BUTTS 1R SIDE PLATING 40 BEAMS 4 BUTTS 1R BEAMS ON EVERY FRAME

L. IN 58 x 69 FOR 1/2 L IN TO 48 AT ENDS BUTTS LAPPED AND 4 R. TO 31 AT ENDS

M. OUT 58 x 68 FOR 1/2 L IN TO 48 AT ENDS BUTTS LAPPED 4 R. 3 R.

J. IN 76 x 68 FOR 1/2 L IN TO 51 AT ENDS BUTTS LAPPED AND 3 R.

H. OUT 76 x 68 FOR 1/2 L IN TO 51 AT ENDS BUTTS LAPPED AND 3 R.

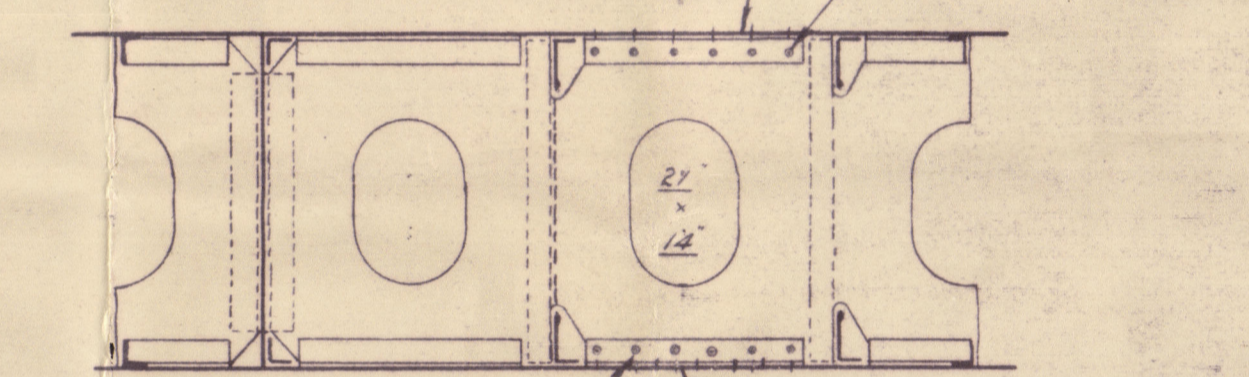
G. IN 76 x 68 FOR 1/2 L IN TO 51 AT ENDS BUTTS LAPPED AND 3 R.

F. OUT 76 x 68 FOR 1/2 L IN TO 51 AT ENDS BUTTS LAPPED AND 3 R.

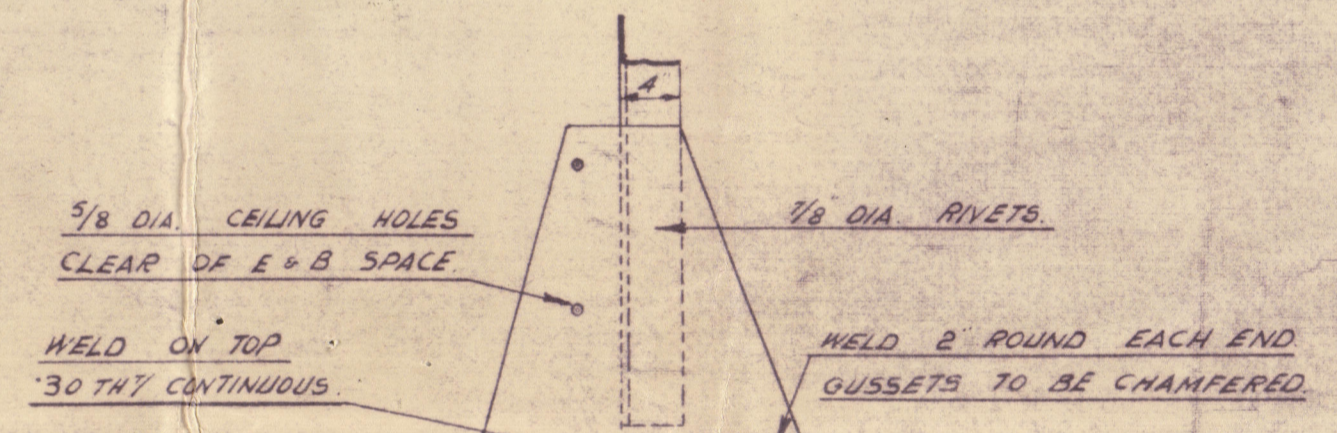
E. IN 83 x 68 FOR 1/4 L IN TO 55 AT ENDS BUTTS LAPPED 1 4 R. 3 R. MIDSHIP BUTTS WELDED.

MARGIN SHELL ANGLE 3/2 x 3/2 x 54 FOR 1/2 L IN TO 55 AT ENDS BUTTS LAPPED AND 4 R. 3 R.

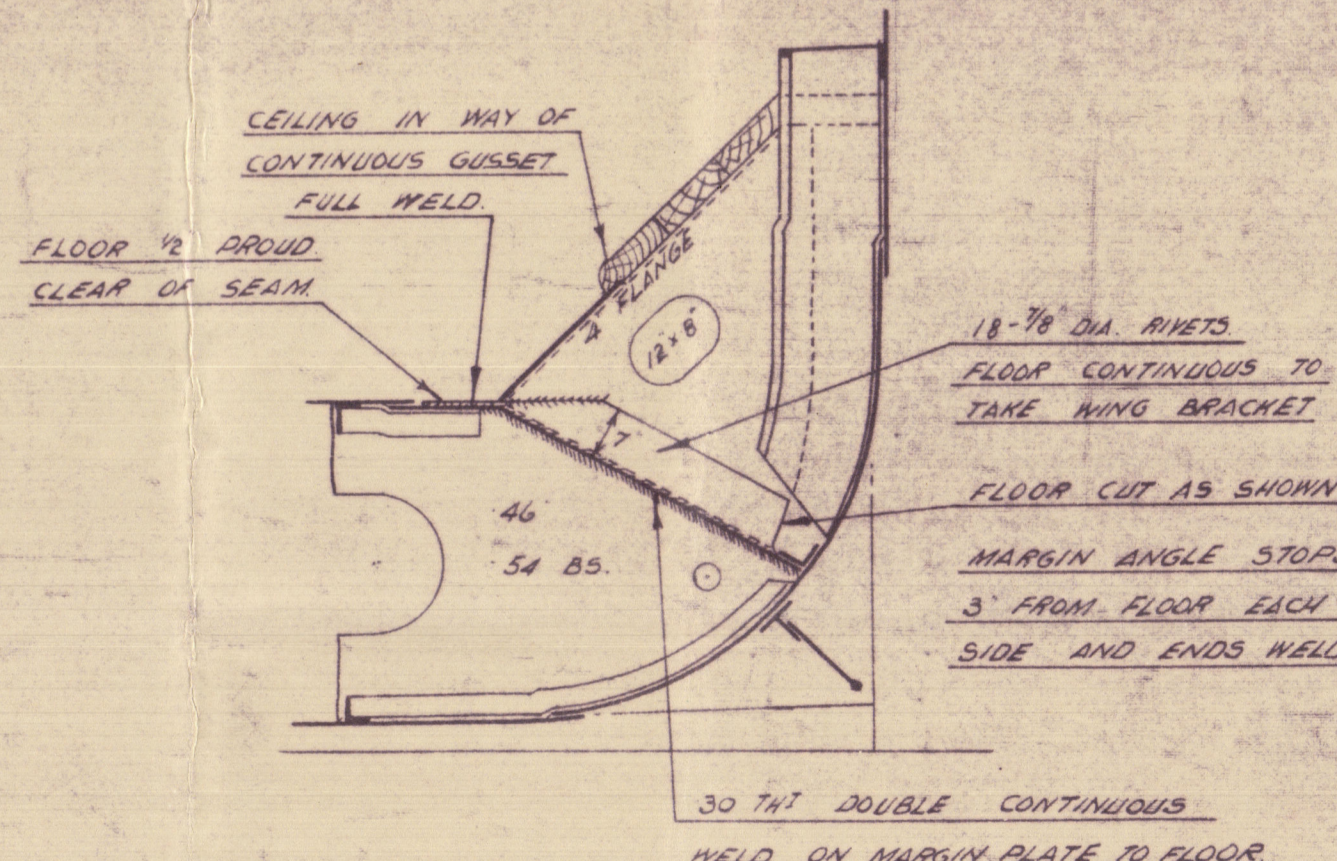
RIVETS UNDER ENGINE AND THRUST SEATS 4/2 DIA CR TO CR BOTH FLANGES NOTE - 7/8 DIA RIVETS IN BOTH FLANGES



ELEVATION OF INTERCOSTAL 12' 2 1/4" OFF CR P. 65



ELEVATION OF TANK GUSSET SCALE 1" = 1FOOT



SECTION OF FLOOR AT TANK MARGIN PLATE BUTT MARGIN PLATES STRAIGHT BETWEEN BUTTS

Wm Hamilton & Co Ltd

Land No 465

Marship Section

"EMPIRE" (as fitted)

J. S. "Kumasi"



2

003788 - 003799 - 0145



© 2020

Lloyd's Register
Foundation