

Lloyd's Register of Shipping.

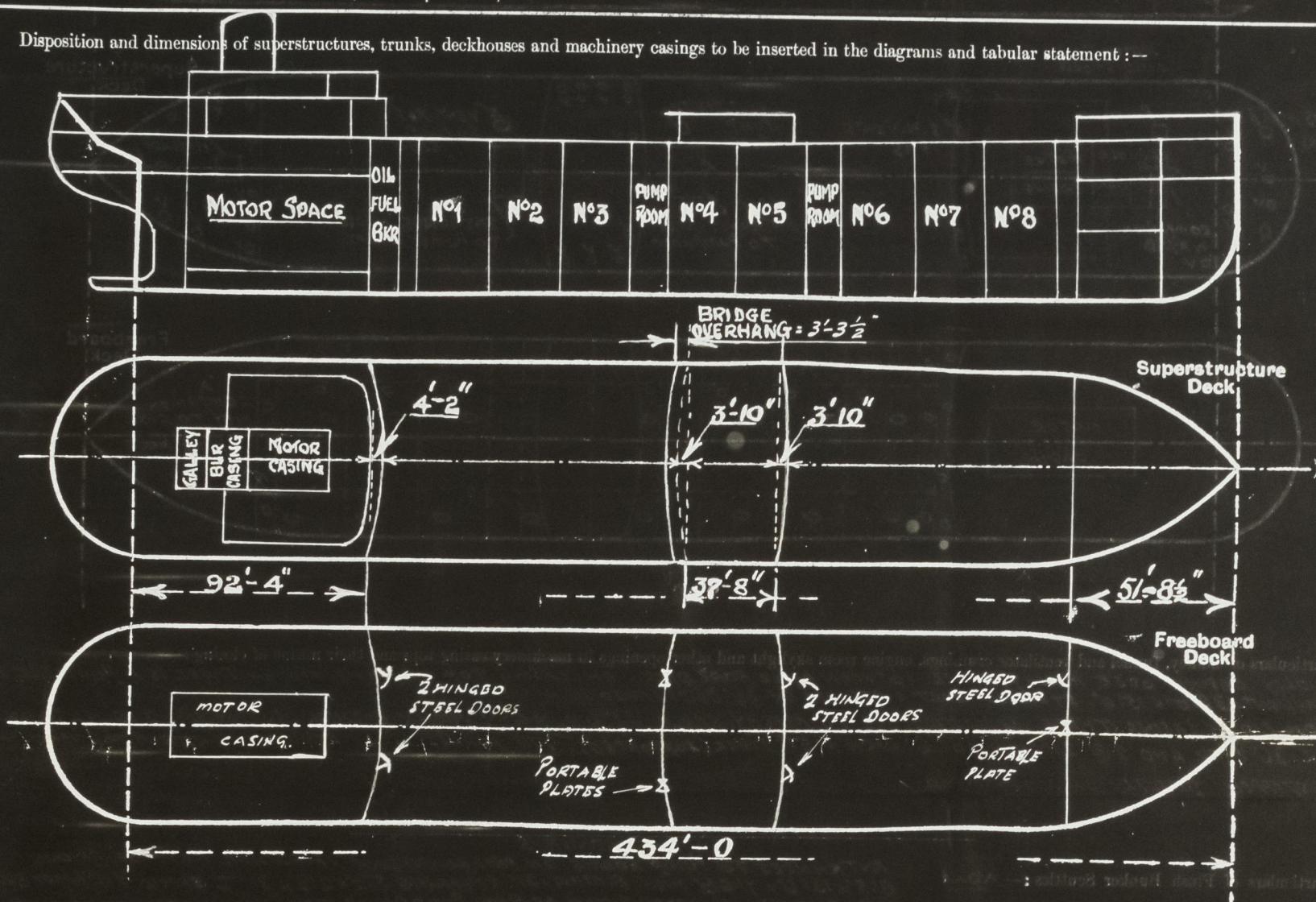
SURVEYS FOR FREEBOARD.

(CONDITIONS OF ASSIGNMENT.)

 Index No. 13050
 (For London Office only).

Ship's Name *'JANUS'* Port of Survey *TRIESTE*
 Official Number *✓* Surveyor's Signature *S. B. Lumsden*
 Nationality and Port of Registry *PANAMANIAN. PANAMA.* Date of Survey *WHILST FITTING OUT.*

Disposition and dimensions of superstructures, trunks, deckhouses and machinery casings to be inserted in the diagrams and tabular statement:—



Particulars of Superstructures, Trunks, Casings, Deckhouses.

	Coaming	Plating	Stiffeners	Spacing	End Attachments of Stiffeners	Size of Openings	Height of Sills	Height of Casings
Poop Bulkhead	8"x3 1/2"x47"	30"	9"x3 1/2"x47" L	30"	BRACKETTED TOP & BOTTOM	2 @ 5'-0"x2'-3"	18"	7'-6 1/2"
Raised Quarter Deck Bulkhead ...								
Bridge, After Bulkhead	8"x3 1/2"x47" L	30"	5 1/2"x44" FLATS	30"	WELDED TO DK. AT HEAD	2 @ 4'-0"x3'-0"	21"	7'-6 1/2"
Bridge, Forward Bulkhead	8"x3 1/2"x47" L	43"	9"x3 1/2"x47" L	30"	BRACKETTED TOP & BOTTOM	2 @ 5'-0"x2'-6"	18"	7'-6 1/2"
Forecastle Bulkhead	8"x3 1/2"x47" L	30"	5"x31" FLATS T	30"	WELDED TO DK. AT HEAD	1 @ 5'-0"x4'-0" 1 @ 5'-0"x2'-0"	18"	7'-6 1/2"
Trunk, Aft			NONE					
Trunk, Forward			NONE					
Exposed Machinery Casings on Freeboard or Raised Quarter Decks ...			NONE					
Exposed Machinery Casings on Superstructure Decks	8"x3 1/2"x47" L	30"	4"x2 1/2"x31" L	30"	WELDED AT HEAD	NONE.	-	7'-6 1/2"
Machinery Casings within Superstructures not fitted with Class I Closing Appliances			NONE					
Deckhouses on Flush Deck Ships ...			-					

Particulars of Closing Appliances (state if capable of being manipulated from both sides).

Poop Bulkhead	2 STEEL HINGED W.T. DOORS SECURED WITH CLIPS, CAPABLE OF BEING OPERATED FROM BOTH SIDES.
Raised Quarter Deck Bulkhead ...	-
Bridge, After Bulkhead	2 OPENINGS CLOSED WITH STEEL PORTABLE PLATES SECURED WITH HOOK BOLTS, NOT PASSING THRO' BND.
Bridge, Forward Bulkhead	2 STEEL HINGED W.T. DOORS SECURED WITH CLIPS, CAPABLE OF BEING OPERATED FROM BOTH SIDES.
Forecastle Bulkhead	1 OPENING CLOSED WITH A STEEL PORTABLE PLATE SECURED WITH HOOK BOLTS, NOT PASSING THRO' BND.
Exposed Machinery Casings on Freeboard or Raised Quarter Decks ...	1 STEEL HINGED DOOR SECURED BY ONE CLIP, CAPABLE OF BEING OPERATED FROM BOTH SIDES.
Exposed Machinery Casings on Superstructure Decks	NONE
Machinery Casings within Superstructures not fitted with Class I Closing Appliances	NO OPENINGS
Deckhouses on Flush Deck Ships ...	NONE



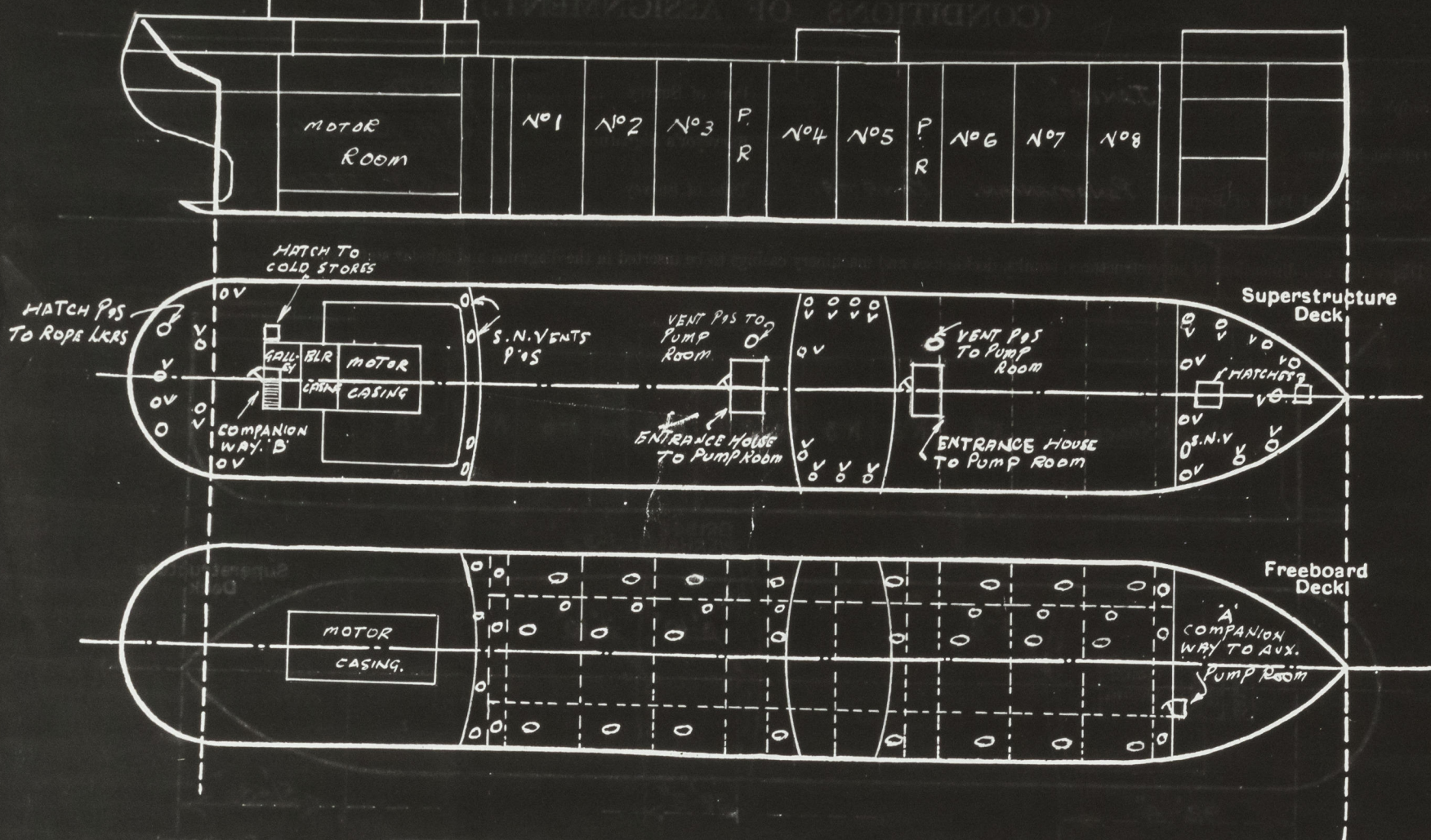
© 2020

Lloyd's Register
Foundation

003808-003815-0134 1/4

PARTICULARS OF PROTECTION TO OPENINGS, ETC.

The following diagrams should be used to indicate the positions of cargo and coaling hatchways, gangway, cargo and coaling ports, ventilators, companionways, etc., which would affect the seaworthiness of the ship:—



Particulars of fiddle, funnel and ventilator coamings, engine room skylight and other openings in machinery casing tops and their means of closing:—
 FIDLEY CASING OVER MACHY. SPACE 16" HIGH ABOVE BOAT DECK. ON CASING TOP OVER THE MOTOR THERE IS A PORTABLE STEEL SKYLIGHT 32"0" X 15"0" STRONGLY BUILT & SECURED BY 3/4" BOLTS SPACED 4" APART
 ON FIDLEY CASING THERE 4 VENTILATORS TO MACHY. SPACE 21" DIA. X 6"9" HIGH X 31" THICK (SUPPORTED), 2 @ 12" DIA X 30" HIGH X 36" THICK AND 2 @ 21" DIA X 15"6" HIGH X 51" THICK (SUPPORTED). THE FUNNEL IS OF STRONG CONSTRUCTION AND STEPPED DIRECTLY ON CASING TOP

Particulars of Flush Bunker Scuttles:— NONE

COMPANIONWAYS
 ENTRANCES TO PUMP ROOMS ON FREEBOARD DECK 1 FORD AND 1 AFT OF BRIDGE 8'5" X 13'6" X 7'6 1/2" HIGH. PLATING .31" STIFFENERS 5'2" X 2'1/2" X .31" T SPACED 24" APART BRACKETED TOP & BOTTOM. ON AFTER BHEAD. OF BOTH PUMP ROOMS THERE IS ONE OPENING CLOSED BY A STEEL HINGED W.T. DOOR SECURED BY CLIPS CAPABLE OF BEING OPERATED FROM BOTH SIDES.
 DOOR 5'0" X 26" SILL 18" HIGH.
 A' ENTRANCE TO AUX. PUMP ROOM ON FREEBOARD OK. STEEL ENCLOSED 3'3" X 31" X 4'6 1/2" HIGH. PLATING .31" THICK. OPENING IN FOCLE BHD. 5'0" X 26" SILL 18" HIGH CLOSED BY A STEEL HINGED W.T. DOOR, SECURED BY CLIPS, CAPABLE OF BEING OPERATED FROM BOTH SIDES.
 B' ON POOP DK. ENTRANCE TO ACCOMMODATION STEEL ENCLOSED 4'3" X 3'2" X 4'6" HIGH. PLATING .31" THICK. STIFFENERS SPACED 34" APART 44" X 38" FLATS T. 1 OPENING 5'0" X 26" SILL 18" HIGH CLOSED BY A STEEL HINGED DOOR SECURED BY ONE CLIP CAPABLE OF BEING OPERATED FROM BOTH SIDES.

Particulars of Companionways:—

Particulars of Ventilators in exposed positions on freeboard and superstructure decks:—

N° OFF.	POSITION.	HEIGHT	DIA.	THICKNESS	LEADING TO
4	FOCLE DK.	36"	10"	.32"	STORE ROOM
2	" "	36"	4 3/4"	.32"	FOCLE SPACE
1	" "	36"	12"	.36"	AUX. PUMP RM.
1	" "	24"	8" X 3"	S.N. V.	" COMPANIONWAY
4	UPPER DECK	16'3"	21 1/2"	.53"	PUMP ROOM SUPPORTED.
2	BRIDGE DECK	30"	10"	.32"	STORE ROOMS
7	" "	30"	6"	.32"	" "
2	POOP DECK	30"	12"	.36"	POOP ACCOM.
1	" "	30"	12"	.36"	STG. GEAR
3	" "	30"	6"	.32"	STORE ROOMS
6	BOAT DECK	30"	12"	.36"	GALLEY & ACCOMM. SPACES.
4	POOP DECK	19"	8" X 3"	S.N. V.	WASH PLACES

ALL VENTILATORS CLOSED WITH STEEL SCREWED. W.T. PLUGS. S.N. VENTS CLOSED WITH HINGED COVERS. SECURED WITH THUMB SCREWS.

Particulars of Air Pipes in exposed positions on freeboard, raised quarter, or superstructure decks:—

N° OFF.	POSITION	HEIGHT	DIA.	LEADING TO
1	FOCLE DECK	18"	3"	F.P. TANK.
4	" "	18"	3"	DEEP TANK.
2	UPPER "	36"	3"	FORD. COFFERDAM
2	" "	36"	3"	AFT " "
3	" "	6'0"	3"	OIL FUEL BUNKERS X
2	" "	5'0"	3"	" " " X
4	POOP "	18"	2"	A.P. TANK & F.W. TANKS
2	" "	18"	2"	F.W. O.B. TANKS
2	" "	18"	2 1/2"	LUB. OIL O.B. TANKS
4	" "	18"	3"	TO O.F. O.B. TANKS & COFFERDAM

AIR PIPES TO WATER TANKS HAVE HINGED COVERS SECURED WITH THUMB SCREWS. ALL OTHER AIR PIPES HAVE PERFORATED PLATES AT MOUTH AND HINGED COVERS. AIR PIPES MARKED X ARE EFFICIENTLY SUPPORTED.



© 2020 Lloyd's Register Foundation



© 2020

Lloyd's Register
Foundation

0134 214

Particulars of Gangway Cargo and Coaling Ports :—

NONE

Particulars of Scuppers and Sanitary Discharge Pipes :—

THERE ARE 3 SCUPPERS P/S IN FORWARD WELL AND IN AFTER WELL CUT THRO' UPPER DECK STRINGER ANGLE THERE ARE ALSO 2 - 5" DIA. PIPE SCUPPERS P/S FROM UPPER DECK IN FORD & AFTER WELLS DISCHARGING DIRECTLY OVERBOARD.
THE SCUPPERS FROM FO'LE SPACE DISCHARGE ON TO UPPER DECK AND ARE FITTED WITH SCREWED PLUGS ON FO'LE BHD.
THE SCUPPERS AND SANITARY DISCHARGES FROM BRIDGE ACCOMMODATION DISCHARGE ABOVE FREEBOARD DECK, AND FROM POOP AND POOP SPACE BELOW THE FREEBOARD DECK. ALL ARE FITTED WITH AUTO-MATIC NON-RETURN VALVES ON SHIPS SIDES.

Particulars of Side Scuttles :—

NO SIDE SCUTTLES BELOW FREEBOARD DECK
IN BRIDGE 9" DIA. STEEL FRAMED, GALVANISED FITTED WITH HINGED DEADLIGHTS
IN POOP 12" " STEEL FRAMED, GALVANISED FITTED WITH HINGED DEADLIGHTS.

Vertical distance of Sill of lowest Side Scuttle above top of keel

33' 9"

Particulars of Guard Rails :—

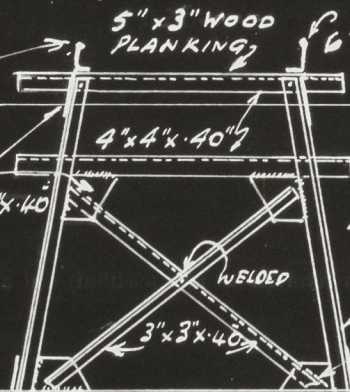
ON FO'LE 3' 6" HIGH. 3 RAILS STANCHIONS SPACED 4' 6" APART
IN WELLS 3' 6" HIGH 3 RAILS STANCHIONS SPACED 4' 6" APART
ON POOP 3' 6" HIGH 3 RAILS STANCHIONS SPACED 4' 6" APART

Particulars of Gangways, Lifelines, etc. :—

STANCHIONS ON
GANGWAY 2 RAILS
3' 4" HIGH. STANCHIONS
SPACED 4' 6" APART

BRACKETS 12"x12"x40"
WELDED TO ALL
STRUTS

BRACKETS WELDED
TO DECK



THE GANGWAY IS FITTED AT THE LEVEL
OF SUPERSTRUCTURE DECKS, BETWEEN
FO'LE AND BRIDGE AND BRIDGE AND POOP.

Particulars of Freeing Arrangements.

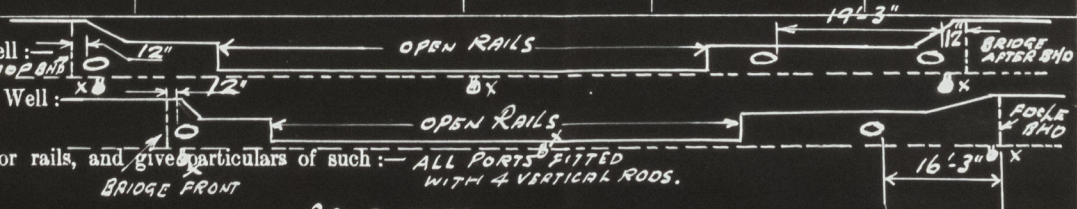
	Length of Bulwark	Height of Bulwark	Size of Freeing Ports	Number each side	Area each side	Rule area each side
After Well	62' 11"	3' 6"	3' 6" x 18"	3	15 f	✓
Forward Well	56' 9"	3' 6"	3' 6" x 18"	2	10 f	✓

State position of each freeing port

(F. and A. position and height above deck edge) //

State whether the freeing ports are fitted with shutters, bars, or rails, and give particulars of such :—

Additional area where sheer is less than standard.





© 2020

Lloyd's Register
Foundation

0134 3/14

PARTICULARS OF PROTECTION TO OPENINGS, ETC.

HATCHWAYS ON FREEBOARD AND SUPERSTRUCTURE DECKS.										
← FREEBOARD DECK →										
← POOP DECK →										
Description of Hatchway	HATCHES TO CARGO TANKS 24 OFF	TO COFFERDAMS AND BUNKERS 10 OFF	ACCESS HATCHES FOR TANK CLEANING 8 OFF	TO CARGO HOLD	TO FORE PEAK STORE	TO ROPE LOCKERS 2 OFF	HATCH TO COLD STORES	
Dimensions of Hatchway	4'8" x 3'1 1/2"	21" DIA		24" DIA	9'0" x 10'0"	2'6" x 2'5"	20" DIA	2'6" x 2'5"
COAMINGS	{	Height above Deck	30"	9"		10"	24"	10"	9"	9"
		Thickness { Sides	43"	43"		48"	38"	36"	32"	36"
		Ends	43"				38"	36"	32"	36"
		Stiffeners								
		Brackets, Stays	✓							
HATCH BEAMS	{	Number								
		Spacing								
		Scantling and Sketch								
		Bearing Surface								
FORE AND AFTERS	{	Number								
		Spacing								
		Unsupported Lengths								
		Scantling and Sketch								
		Bearing Surface								
HATCH COVERS	{	Material	STEEL	STEEL		STEEL	STEEL	STEEL	STEEL	STEEL
		Thickness	50	50		50	50	50	50	50
		How fitted	STIFFENED	BOLTED COVERS		STIFFENED	HINGED WITH HEMP PACKING	HINGED WITH HEMP PACKING	HINGED WITH HEMP PACKING	HINGED WITH HEMP PACKING
		Bearing Surface	HINGED WITH HEMP PACKING	BOLTS AT O.T. PITCH		HINGED WITH HEMP PACKING	HINGED WITH HEMP PACKING	HINGED WITH HEMP PACKING	HINGED WITH HEMP PACKING	
Spacing of Cleats	EASTENINGS		13"		13"	15 1/2"	12"	4 CLIPS	12"	
Number of Tarpaulins										
*Are wood fore and afters steel shod at all bearing surfaces? ✓										
Are battens and wedges efficient and in good condition? ✓										
Are tarpaulins in good condition and in accordance with rule requirements? ✓										
Are lashings provided in accordance with rule requirements? ✓										

Particulars of any special features:—

Tanker with Transverse Side framing, Longitudinal framing at Bottom, and at Deck. Two Longitudinal Bulkheads. Single Deck in way of oil tanks. Cruiser Stem.

Endorsement at first survey and at surveys for renewal of Certificate:—

The fittings and appliances are in accordance with the particulars shown on this form (or as now modified) and are in good condition.



© 2020

Lloyd's Register Foundation



© 2020

Lloyd's Register
Foundation

0134 4/4