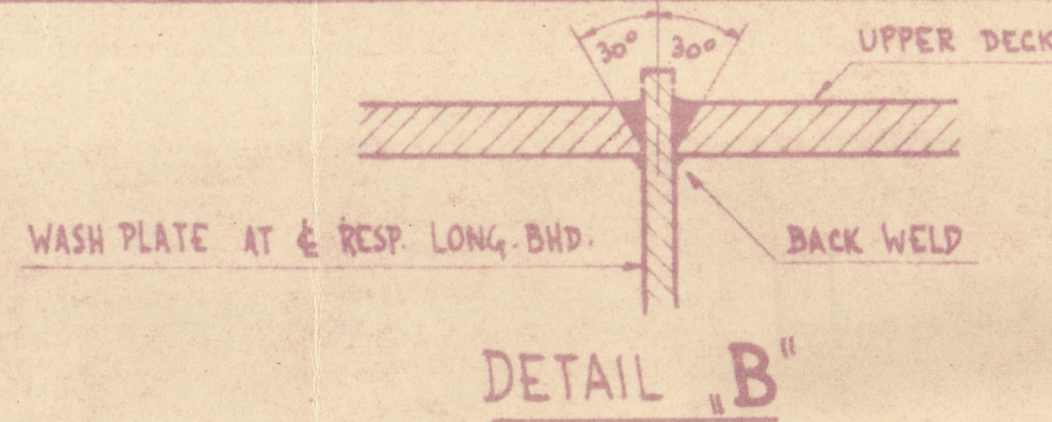
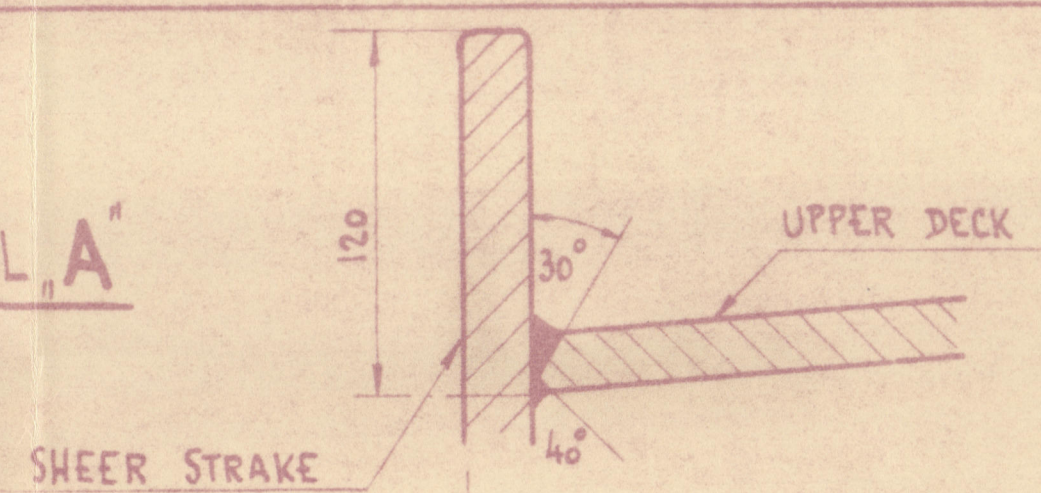


DETAIL A



UPPER DECK LONGITUDINALS SEE DWG 214/2 V. PROFILE AND PLANS

DETAIL B

WASH PLATE AT DECK LONG. BHD.

BACK WELD

STRINGER PLATE .80" TO .44" AT ENDS

42" AT POOP FRONT AND BRIDGE ENDS

4800 M/H INSIDE LONG. 249

ROUND OF BEAM 475 M/H

SEE DETAIL A

150-75 NOTCHES

SEE DETAIL B

150-75 NOTCHES

150-75 NOTCHES

150-75 NOTCHES

150-75 NOTCHES

150-75 NOTCHES

150-75 NOTCHES

150-75 NOTCHES

150-75 NOTCHES

150-75 NOTCHES

150-75 NOTCHES

150-75 NOTCHES

150-75 NOTCHES

150-75 NOTCHES

150-75 NOTCHES

150-75 NOTCHES

150-75 NOTCHES

150-75 NOTCHES

150-75 NOTCHES

150-75 NOTCHES

150-75 NOTCHES

150-75 NOTCHES

150-75 NOTCHES

150-75 NOTCHES

150-75 NOTCHES

150-75 NOTCHES

150-75 NOTCHES

150-75 NOTCHES

150-75 NOTCHES

150-75 NOTCHES

150-75 NOTCHES

150-75 NOTCHES

150-75 NOTCHES

150-75 NOTCHES

150-75 NOTCHES

150-75 NOTCHES

150-75 NOTCHES

150-75 NOTCHES

150-75 NOTCHES

150-75 NOTCHES

150-75 NOTCHES

150-75 NOTCHES

150-75 NOTCHES

150-75 NOTCHES

150-75 NOTCHES

150-75 NOTCHES

150-75 NOTCHES

150-75 NOTCHES

150-75 NOTCHES

150-75 NOTCHES

150-75 NOTCHES

150-75 NOTCHES

150-75 NOTCHES

150-75 NOTCHES

150-75 NOTCHES

150-75 NOTCHES

150-75 NOTCHES

150-75 NOTCHES

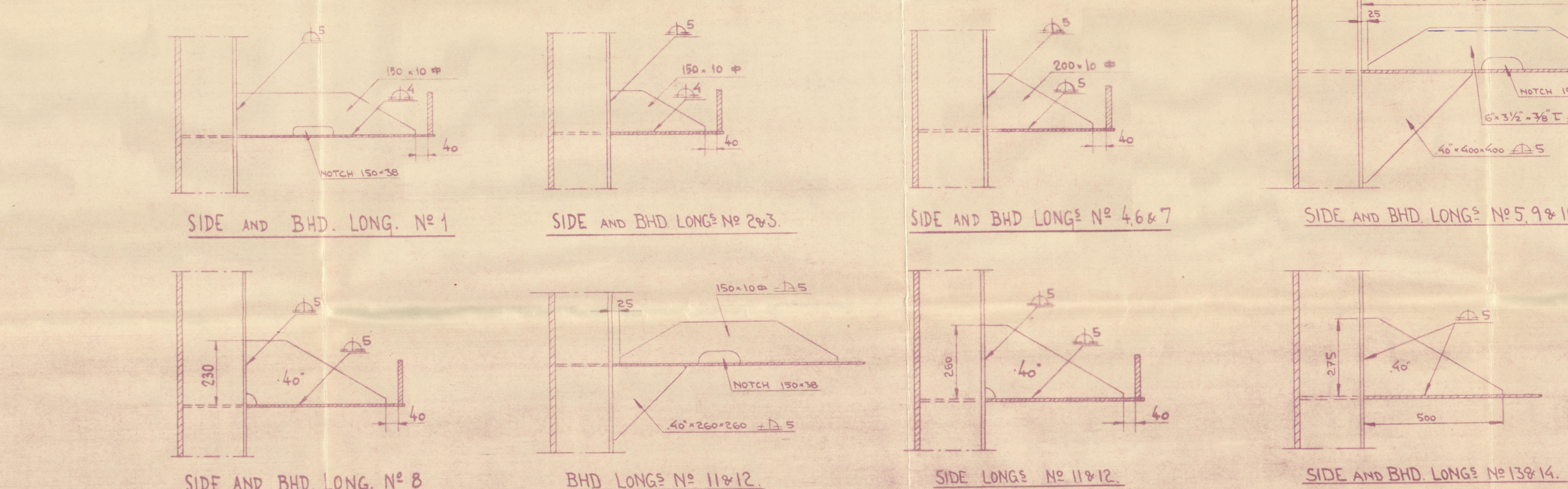
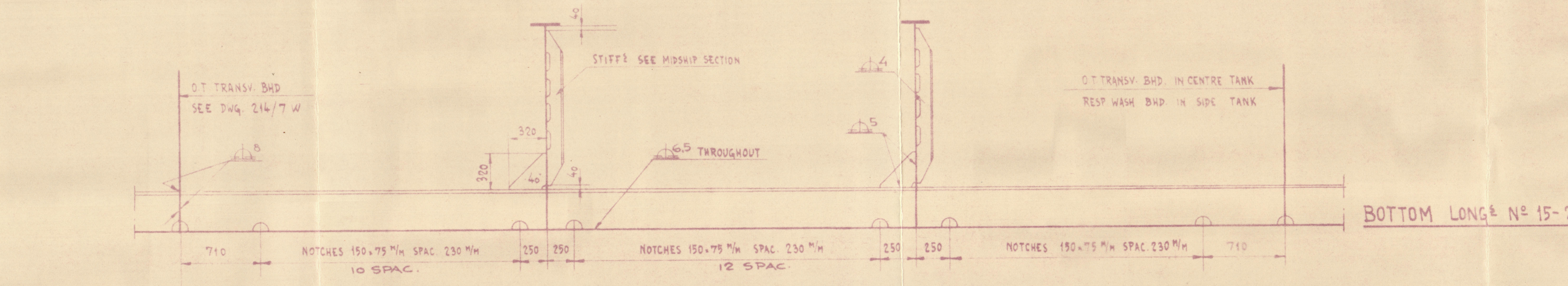
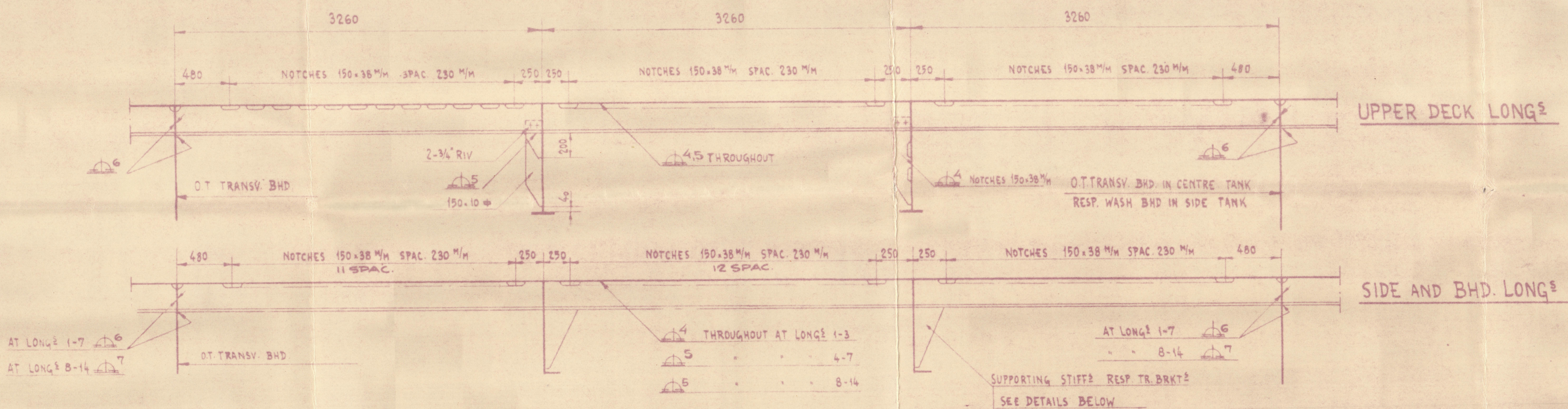
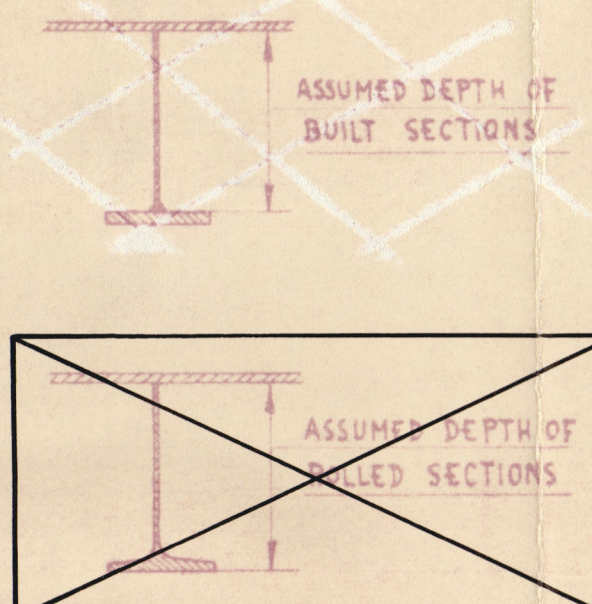
150-75 NOTCHES

150-75 NOTCHES

150-75 NOTCHES

SIDE AND BILGE LONGITUDINALS		
Nº	DIMENSION	DIMENSION
1	215 x 9 = 190 x 15	7' 4" x 7' 6" T
2	215 x 9 = 190 x 15	7' 4" x 7' 6" T
3	215 x 9 = 190 x 15	7' 4" x 7' 6" T
4	215 x 9 = 190 x 15	7' 4" x 7' 6" T
5	215 x 9 = 190 x 15	7' 4" x 7' 6" T
6	215 x 9 = 190 x 15	7' 4" x 7' 6" T
7	215 x 9 = 190 x 15	7' 4" x 7' 6" T
8	215 x 9 = 190 x 15	7' 4" x 7' 6" T
9	215 x 9 = 190 x 15	7' 4" x 7' 6" T
10	215 x 9 = 190 x 15	7' 4" x 7' 6" T
11	215 x 9 = 190 x 15	7' 4" x 7' 6" T
12	215 x 9 = 190 x 15	7' 4" x 7' 6" T
13	215 x 9 = 190 x 15	7' 4" x 7' 6" T
14	215 x 9 = 190 x 15	7' 4" x 7' 6" T
15	215 x 9 = 190 x 15	7' 4" x 7' 6" T
16	215 x 9 = 190 x 15	7' 4" x 7' 6" T
17	215 x 9 = 190 x 15	7' 4" x 7' 6" T
18	215 x 9 = 190 x 15	7' 4" x 7' 6" T
19	215 x 9 = 190 x 15	7' 4" x 7' 6" T

LONG. BULKHEAD LONGITUDINALS		
Nº	DIMENSION	DIMENSION
1	215 x 9 = 190 x 15	7' 4" x 7' 6" T
2	215 x 9 = 190 x 15	7' 4" x 7' 6" T
3	215 x 9 = 190 x 15	7' 4" x 7' 6" T
4	215 x 9 = 190 x 15	7' 4" x 7' 6" T
5	215 x 9 = 190 x 15	7' 4" x 7' 6" T
6	215 x 9 = 190 x 15	7' 4" x 7' 6" T
7	215 x 9 = 190 x 15	7' 4" x 7' 6" T
8	215 x 9 = 190 x 15	7' 4" x 7' 6" T
9	215 x 9 = 190 x 15	7' 4" x 7' 6" T
10	215 x 9 = 190 x 15	7' 4" x 7' 6" T
11	215 x 9 = 190 x 15	7' 4" x 7' 6" T
12	215 x 9 = 190 x 15	7' 4" x 7' 6" T
13	215 x 9 = 190 x 15	7' 4" x 7' 6" T
14	215 x 9 = 190 x 15	7' 4" x 7' 6" T
15	215 x 9 = 190 x 15	7' 4" x 7' 6" T
16	215 x 9 = 190 x 15	7' 4" x 7' 6" T
17	215 x 9 = 190 x 15	7' 4" x 7' 6" T
18	215 x 9 = 190 x 15	7' 4" x 7' 6" T
19	215 x 9 = 190 x 15	7' 4" x 7' 6" T



MIDSHIP SECTION.

FOR SINGLE SCREW TANK MOTOR SHIP

CLASS LLOYD 100 A1 CARRYING PETROLEUM IN BULK

SPECIAL NOTATION LONGITUDINAL FRAMING ELECTRICAL WELDED

DIMENSIONS

LENGTH BETWEEN PP 500.0' = 152.400 M
BREADTH MOULDED 63.0' = 19.202 M
DEPTH 38.6' = 11.765 M
HEIGHT OF FORECASTLE 7.6' = 2.286 M
HEIGHT OF BRIDGE 7.9' = 2.362 M

L.R. NUMERALS

FIRST LONG. NUMERAL: L/D = 500.375 = 18750
SECOND: L/(B+D) = 500.63+375 = 50250
L/D = 500/38.5 = 12.99

EQUIPMENT NUMBER

L/(B+D) = 500.63+385 = 50750
POOP 100 x 8.0 x 0.75 = 600
BRIDGE 48.6 x 7.75 x 0.75 = 269
FORECASTLE 59.7 x 7.5 x 0.75 = 336
DECK HOUSES ON POOP 82 x 8.5 x 0.5 x 8.5 x 0.5 = 570
BRIDGE 32.8 x 8.5 x 0.5 x 32.8 x 8.5 x 0.5 = 52816

LETTER F

EQUIPMENT

3 BOWER ANCHORS STOCKLESS 85.85 CWT EACH COLL WEIGHT 257.5 CWT
1 STREAM 24.5 CWT EXL STOCK
300 FATHOMS 2 1/2" STEEL WIRE 6x24 SPEC FLEX STEEL WIRE ROPE
150 5 1/2" 6x12 FLEX
2x100 2 1/2" 6x12 FLEX
2x100 2 1/2" 6x12 FLEX



PART CLASS N/T 325

325 LLOYD MIDSHIP SECTION AS BUILT KOCKUMS MEN. VERKSTÄDS A.B. MALMÖ SWEDEN.

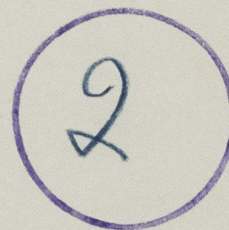
CORRECTED AS APPROVED BY LLOYD'S REG. 29/4/49 AND 9/5/49

FOUNDATION

'Swithrod' ★

Midship Section
(as Built)

RECORDS DEPT..
LONDON



© 2020

Lloyd's Register
Foundation

003832-003837-0201