

Lloyd's Register of Shipping.

Ship's Name

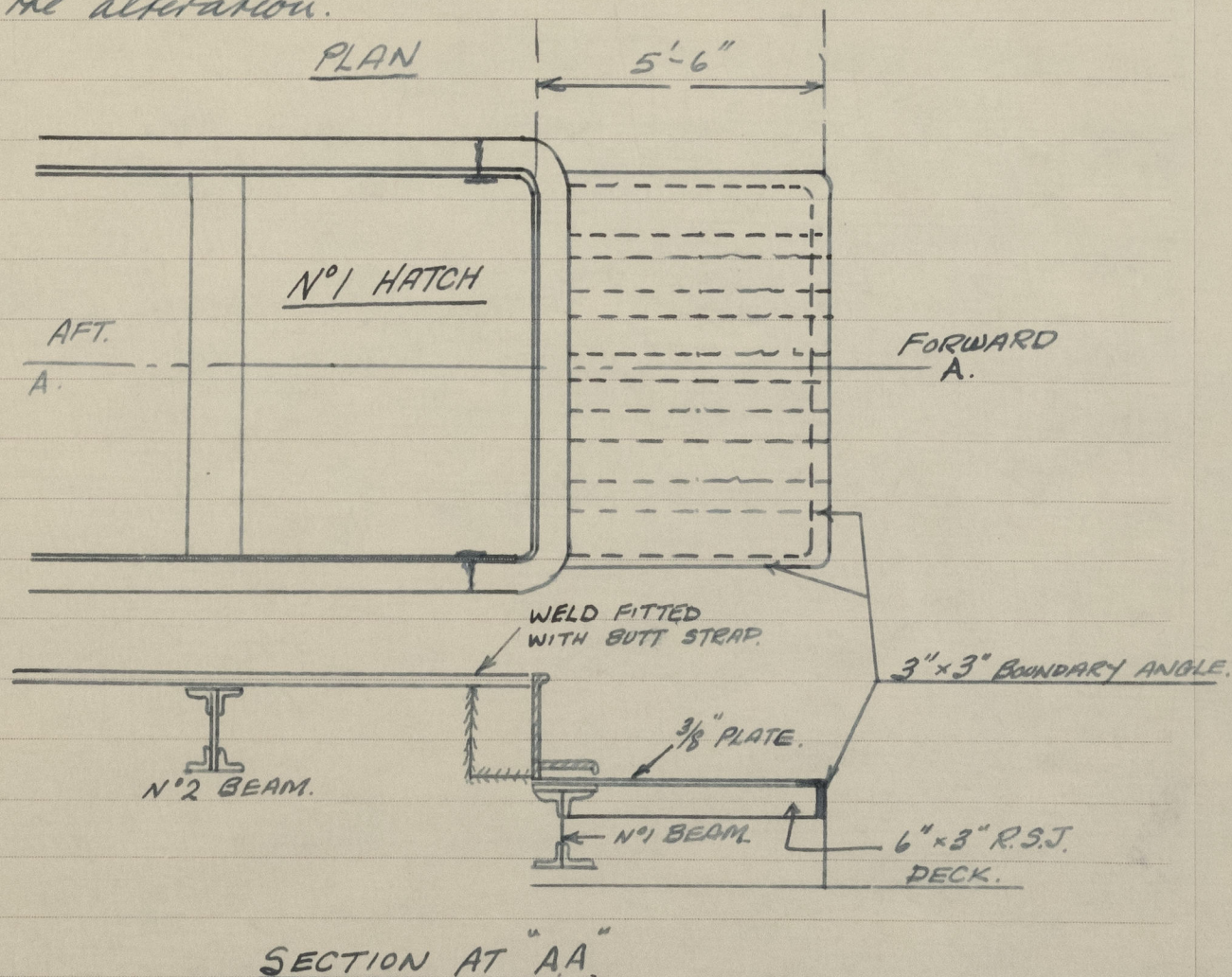
Apanui

Official No.

Memorandum of alterations reported since ship was surveyed for assignment of Load Lines in

Alteration to N°1 Hatchway.

To allow for a larger winch at the fore end of N°1 Hatch, a winch bed was provided by cutting away the fore part of the coaming below the horizontal stiffener and moving it aft 5'-6". The hatch beam at that position was lowered and permanently fastened to support the coaming in its new position and to carry the aft ends of five 6"x3" R.S.J.'s fitted fore and aft to support new portion of deck and winch bed. A 3"x3" boundary angle was fitted around the inside of the bottom half of the coaming remaining under the winch bed to which was welded the 3/8" plating. A thwartship beam was fitted and welded to stiffen fore and aft beams. The new joint of the forward coaming to the port and starboard sides was reinforced with an inside butt strap. All work was examined in progress and hose tested on completion. Wooden hatches were altered to suit the alteration.



Alteration carried out at LYTTELTON. N.Z. 21/1/50.