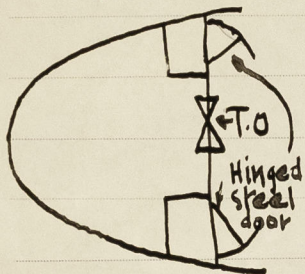


Lloyd's Register of Shipping.

Ship's Name SENTRY

Official No. 147403

Memorandum of alterations reported since ship was surveyed for assignment of Load Lines
in DEC., 1932.



The arrangement of the poop bulkhead (in the tonnage well) is as shewn on the accompanying sketch. Two hinged steel doors (4'6" x 2'6") are fitted to the wing stores as shewn on the accompanying sketch in addition to the tonnage opening on the centre line.

The Certificates have been amended in respect of closing appliances to the poop as follows:

Storm boards in riveted channels	- one opening)initialled H.S.N. 22.4.38.
Hinged steel doors	- two openings	

(Mch., Apl., 1938).

Noted
Bob

-3 MAY 1938