

Nº 1531.

RUDDER & STERN - FRAME.

SCALE:- $\frac{1}{2}$ " = 1 FOOT.

STERN FRAME & RUDDER FRAME OF FORGED INGOT STEEL
TO PASS LLOYD'S TESTS & 100 A1

AREA OF RUDDER ABAFT & OF PINTLES 120.56 } A.D. = 460
C.G. " " " " " 3.58 }
AREA OF RUDDER FORWARD OF " 43.83 } A.D. = 64
C.G. " " " " " 1.46 }

LLOYD'S A.D. = 396 SPEED = 12 $\frac{3}{4}$ KNOTS.

RULE DIA. OF STOCK = 9 $\frac{7}{8}$ "
+ 10% FOR TANKS = 1"
= 10 $\frac{7}{8}$ " DIA.

MAIN-PIECE 12" x 13"
TAPERING TO 8" x 9 $\frac{1}{2}$ "
AT HEEL.

NOTES:-

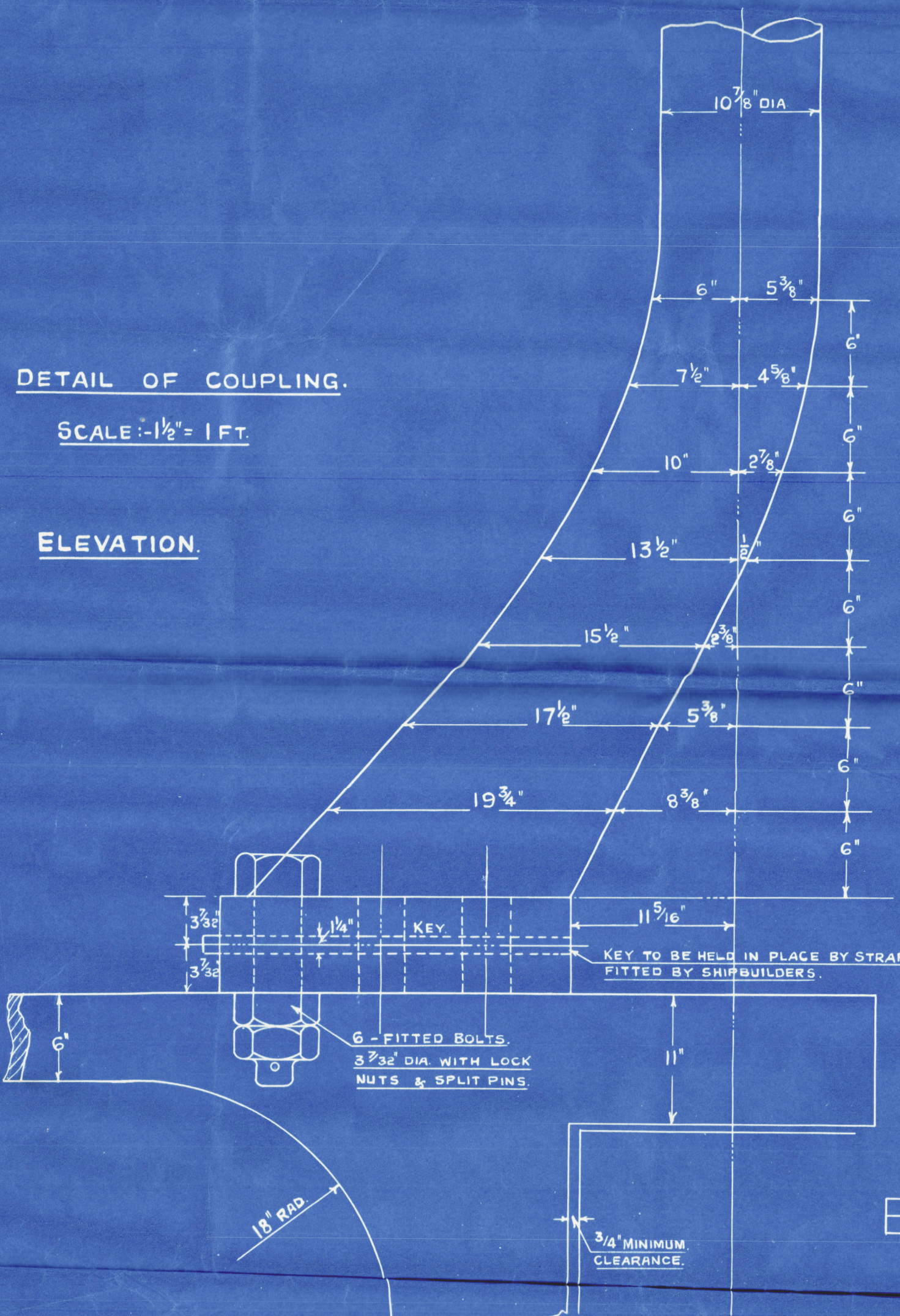
DIMENSIONS ON THIS PLAN TO BE CAREFULLY WORKED TO, AND NOT EXCEEDED UNLESS OTHERWISE AGREED.
ANY EXCESS WEIGHT OVER THAT CALCULATED TO THESE DIMENSIONS WILL NOT BE PAID FOR.
THE CENTRELINE OF UPPER STOCK, GUDGEONS, & PINTLES TO BE IN A PERFECTLY STRAIGHT LINE SQUARE TO BASE.
CORRECT POSITIONS OF RUDDER GUDGEONS TO BE TEMPLATED FROM STERN FRAME.

RUDDER & STERN FRAME NOT TO BE PAINTED BUT GIVEN A COAT OF OIL BEFORE DESPATCH.
SHIPS NUMBER & WEIGHT OF FORGINGS TO BE CLEARLY PAINTED ON.

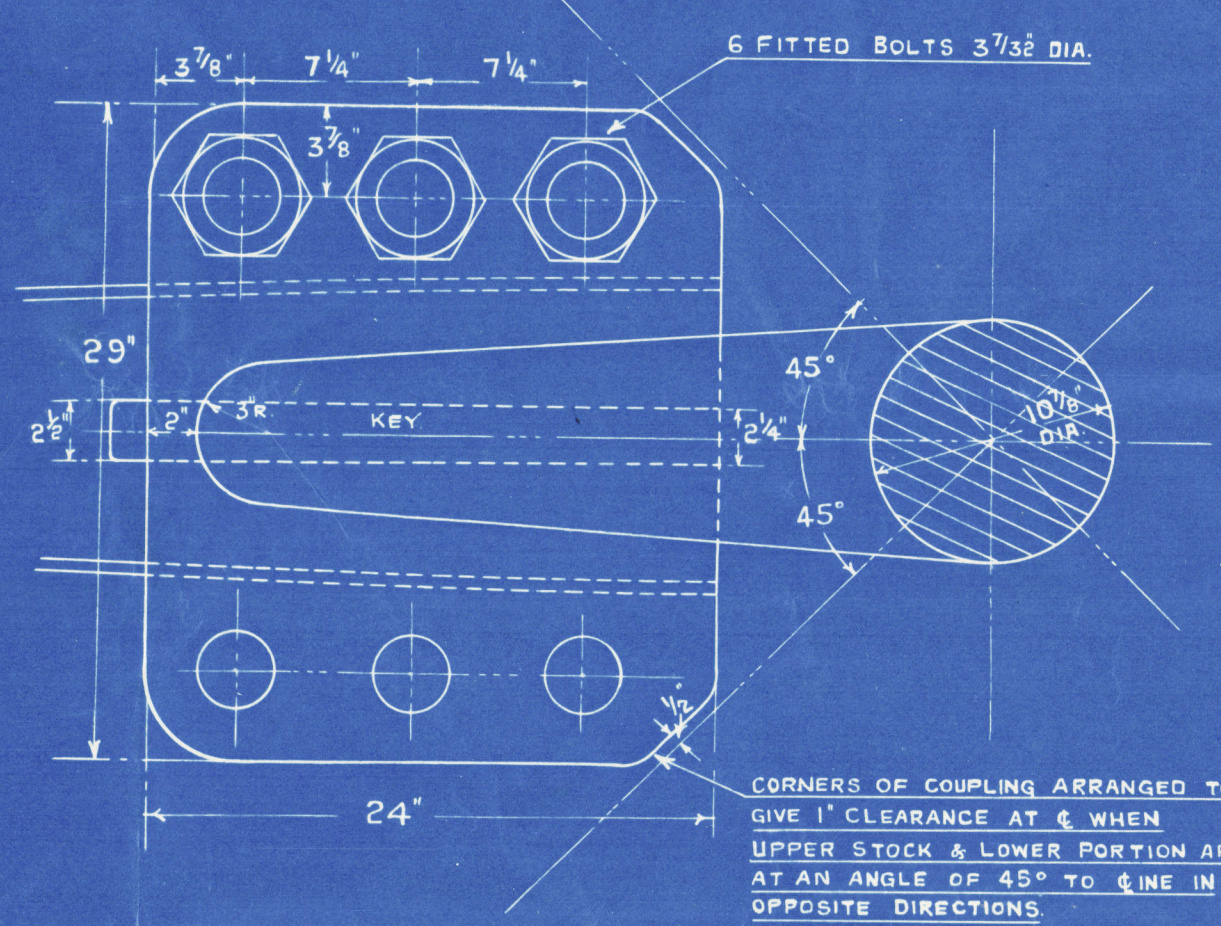
FULL SIZE SECTIONS OF STERN FRAME FOOT WILL BE SENT LATER.
ALL RIVET HOLES TO BE DRILLED BY MAKERS AND THE SPACING GIVEN MUST NOT BE EXCEEDED. ALL MACHINING TO BE DONE BY MAKERS.
THE BOSS TO BE BORED OUT BY MAKERS TO ROUGH DIA. ONLY.

DETAIL OF COUPLING.
SCALE:- $\frac{1}{2}$ " = 1 FT.

ELEVATION.



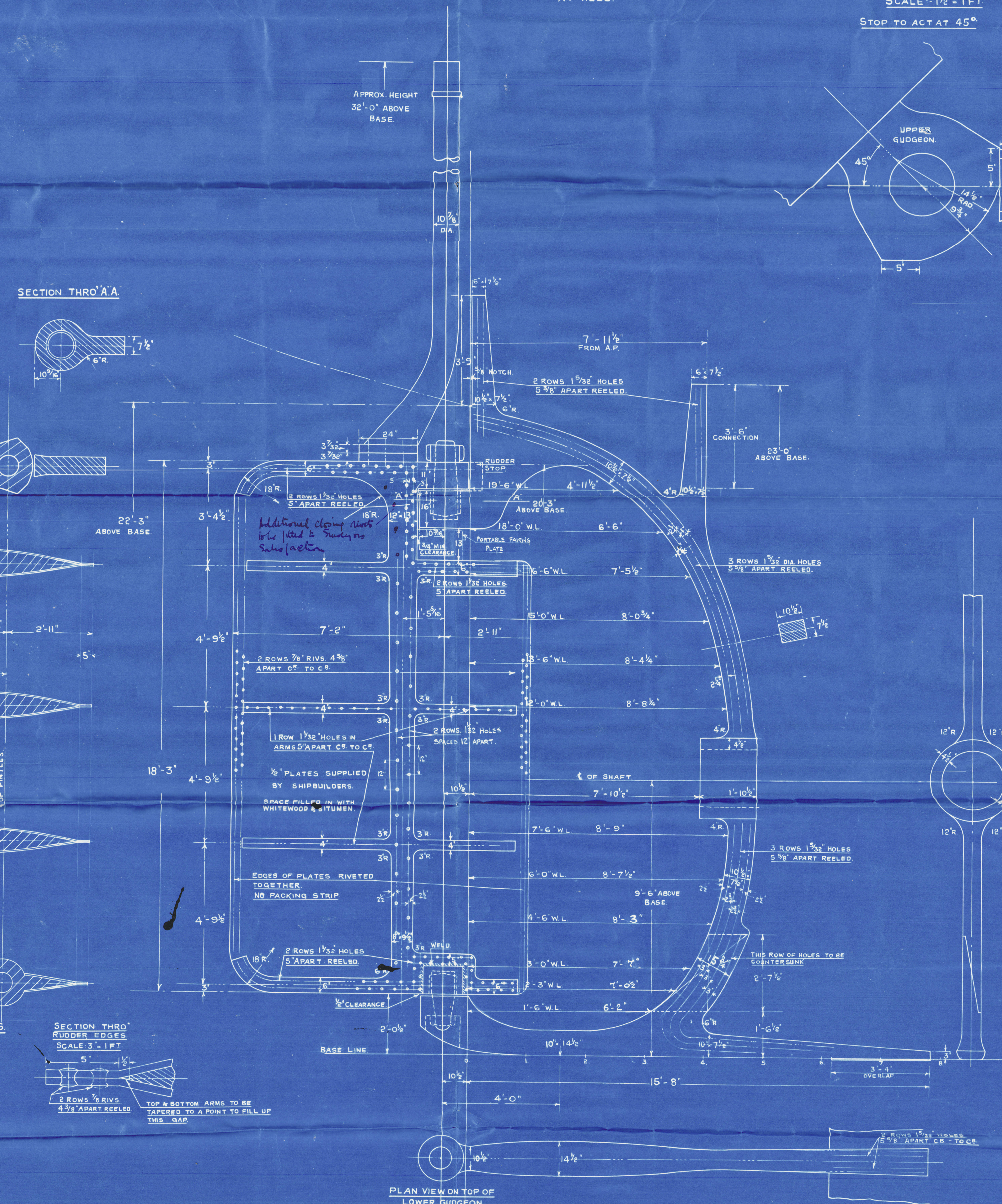
PLAN VIEW



SECTION THRO' MAINPIECE

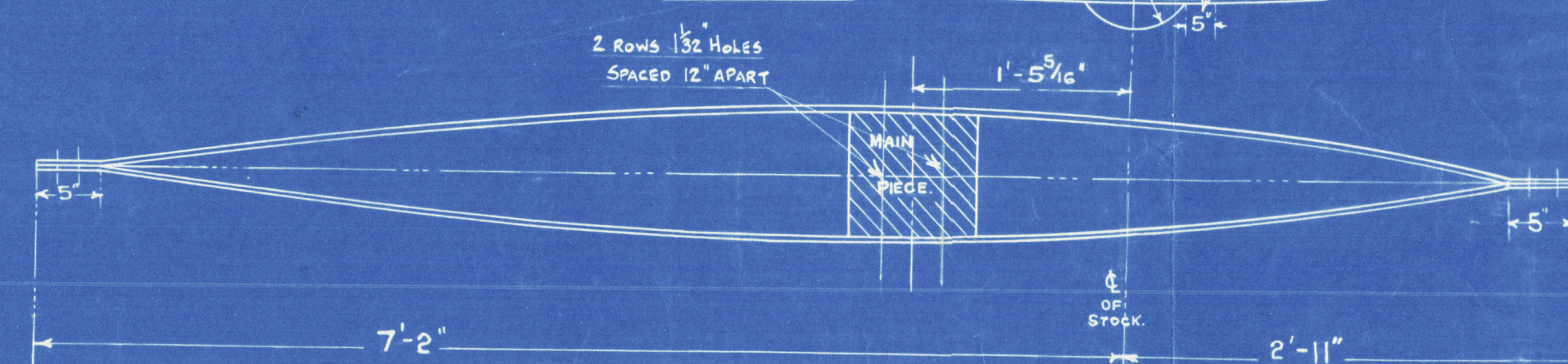
SECTIONS THRO' ARMS

SECTION THRO' RUDDER EDGES

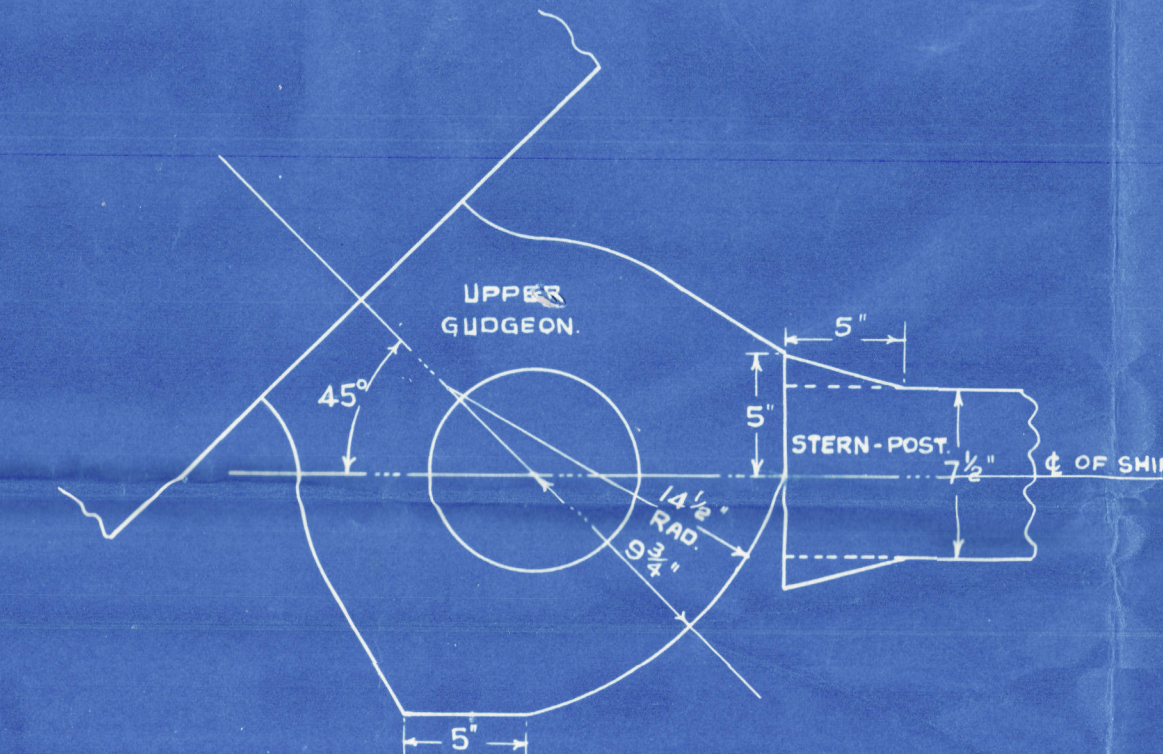


PLAN VIEW ON TOP OF LOWER GUDGEON

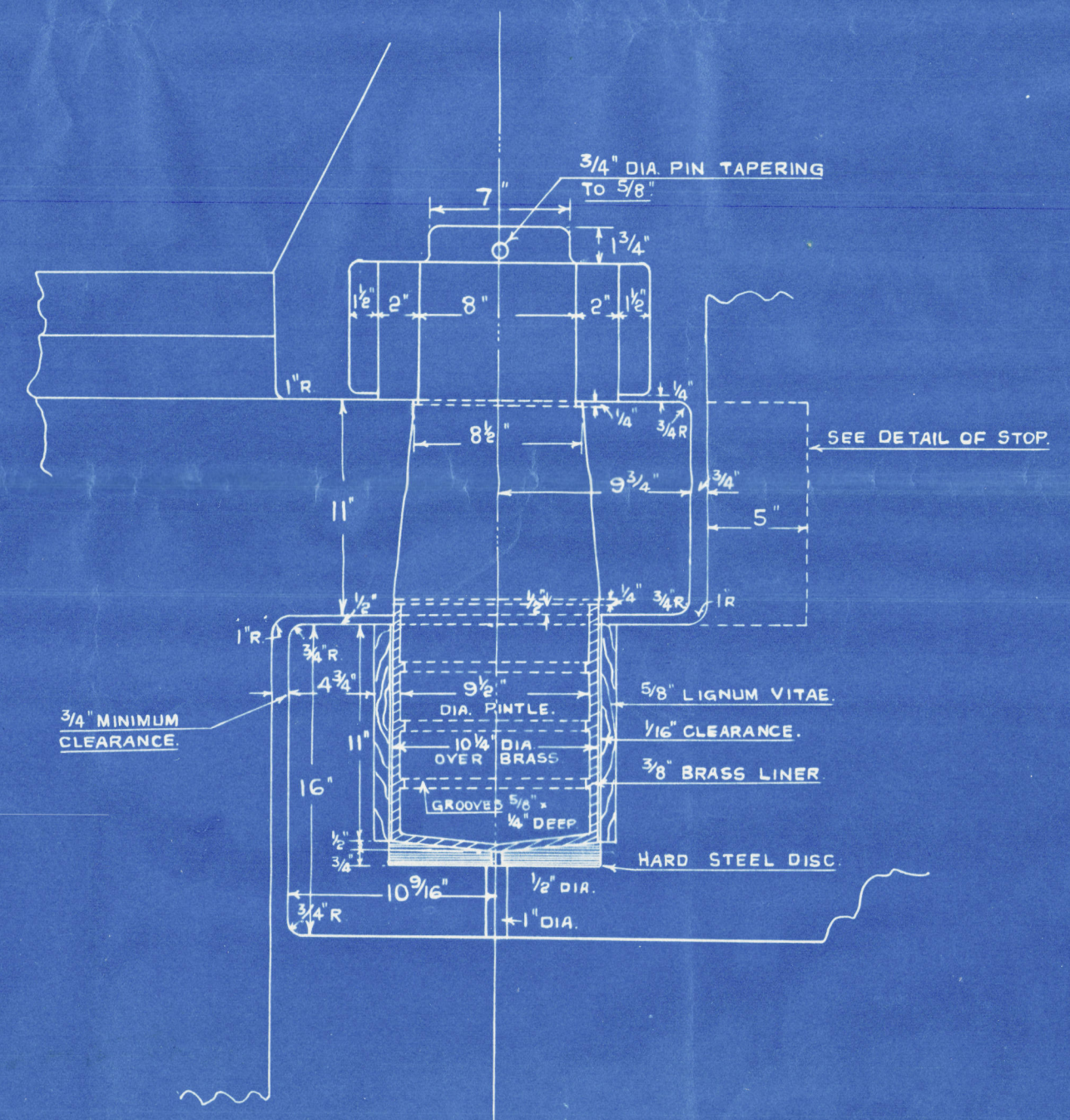
SECTION THRO' RUDDER
SCALE 1" = 1 FT.



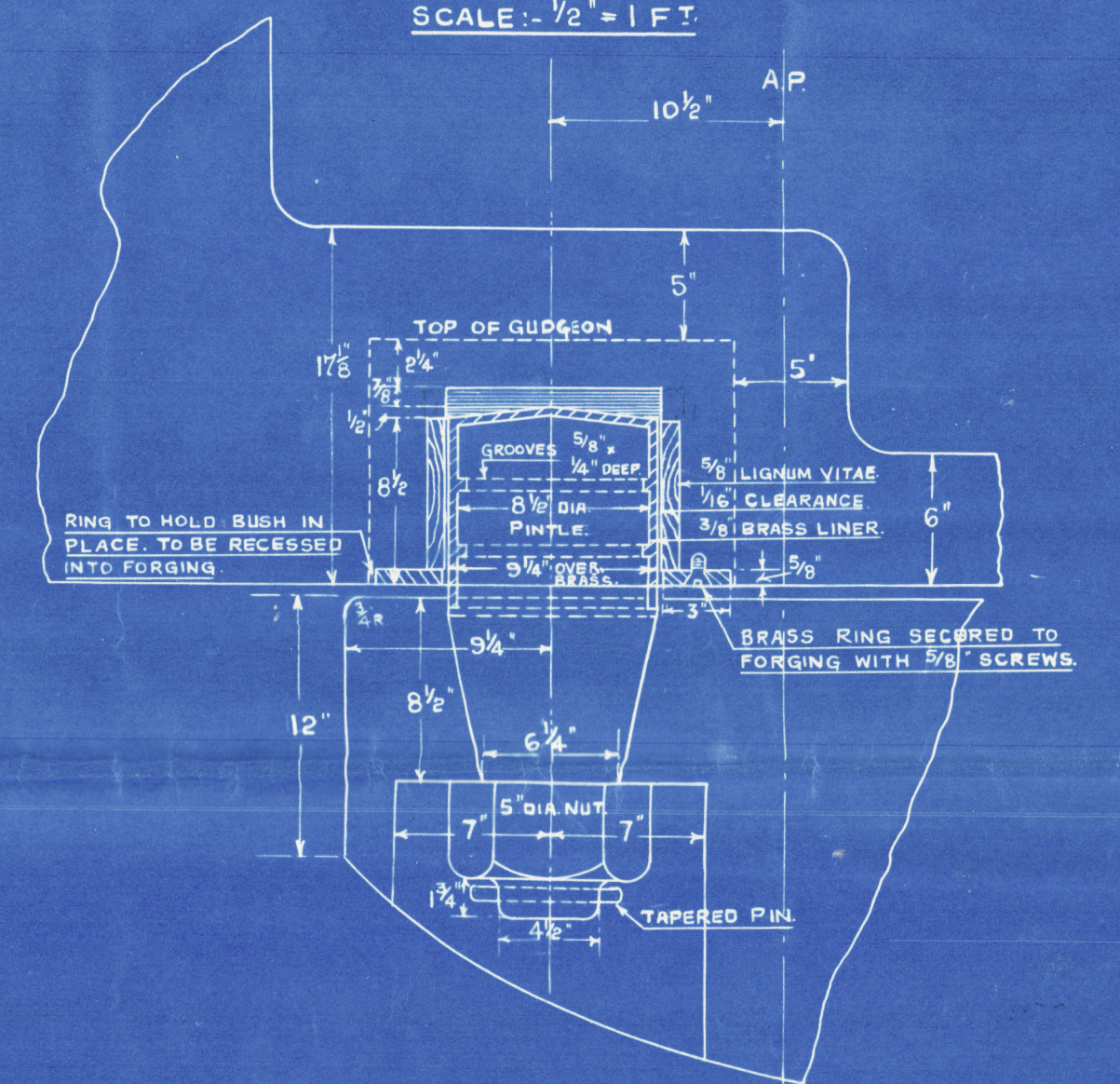
DETAIL OF GUDGEON STOP.
SCALE:- $\frac{1}{2}$ " = 1 FT.
STOP TO ACT AT 45°



DETAIL OF UPPER PINTLE.
SCALE $\frac{1}{2}$ " = 1 FOOT



DETAIL OF LOWER PINTLE
SCALE:- $\frac{1}{2}$ " = 1 FT.



1873-1874
1875-1876
1877-1878
1879-1880
1881-1882
1883-1884
1885-1886
1887-1888
1889-1890
1891-1892
1893-1894
1895-1896
1897-1898
1899-1900
1901-1902
1903-1904
1905-1906
1907-1908
1909-1910
1911-1912
1913-1914
1915-1916
1917-1918
1919-1920
1921-1922
1923-1924
1925-1926
1927-1928
1929-1930
1931-1932
1933-1934
1935-1936
1937-1938
1939-1940
1941-1942
1943-1944
1945-1946
1947-1948
1949-1950
1951-1952
1953-1954
1955-1956
1957-1958
1959-1960
1961-1962
1963-1964
1965-1966
1967-1968
1969-1970
1971-1972
1973-1974
1975-1976
1977-1978
1979-1980
1981-1982
1983-1984
1985-1986
1987-1988
1989-1990
1991-1992
1993-1994
1995-1996
1997-1998
1999-2000

1873-1874
1875-1876
1877-1878
1879-1880
1881-1882
1883-1884
1885-1886
1887-1888
1889-1890
1891-1892
1893-1894
1895-1896
1897-1898
1899-1900
1901-1902
1903-1904
1905-1906
1907-1908
1909-1910
1911-1912
1913-1914
1915-1916
1917-1918
1919-1920
1921-1922
1923-1924
1925-1926
1927-1928
1929-1930
1931-1932
1933-1934
1935-1936
1937-1938
1939-1940
1941-1942
1943-1944
1945-1946
1947-1948
1949-1950
1951-1952
1953-1954
1955-1956
1957-1958
1959-1960
1961-1962
1963-1964
1965-1966
1967-1968
1969-1970
1971-1972
1973-1974
1975-1976
1977-1978
1979-1980
1981-1982
1983-1984
1985-1986
1987-1988
1989-1990
1991-1992
1993-1994
1995-1996
1997-1998
1999-2000

(5)

Swan Hunter No 1531

Rudder & Stern frame

M.S. "Yenangyaung".
NEWCASTLE ON TYNE.

Report No. 95379.



© 2020

003937-003947-0194

Lloyd's Register
Foundation