

No 72.

JOB No J 1505

STRUCTURAL SECTIONS

SCALE 1/2" = 1 FOOT

DIMENSIONS 200'-0" B.P. x 33'-0" MLD x 13'-6" TO UPPER DECK

CLASS LLOYDS 100A1 CARRYING PETROLEUM IN BULK

LONGITUDINAL FRAMING IN CENTRE TANKS AT BOTTOM AND DECK

AMENDED AS PER LLOYDS APPROVED PLAN .25-7-41.

NUMERALS		RULE EQUIPMENT	
LENGTH OVER CRUISE STEEN	210'-0"	3 BOWER ANCHORS STOCKLESS COLL WEIGHT 60 1/2 CWTs	
L/D	201'-0"	1 STEAM EX STOCK 5 1/4 CWTs	
L/D	201'-0"	210 FATHOMS 1 1/2" STUD CHAIN CABLE	
L/D	201'-0"	60 3/4" G-1/2 FLEX STEEL WIRE (STEAM)	
L/D	201'-0"	90 3" G-1/2 " " (TOWLINE)	
L/D	201'-0"	1290 2 1/4" G-1/2 " " (HAWSER)	
L/D	201'-0"	1090 1 3/4" G-1/2 " " (WAPPS)	
EQUIPMENT NUMERAL			
L/D	201'-0"	93744	
FOCLE	35'-8" x 7'-5"	2100	
POOP	35'-8" x 7'-5"	4980	
HOUSE ON POOP	35'-8" x 7'-5"	105154	

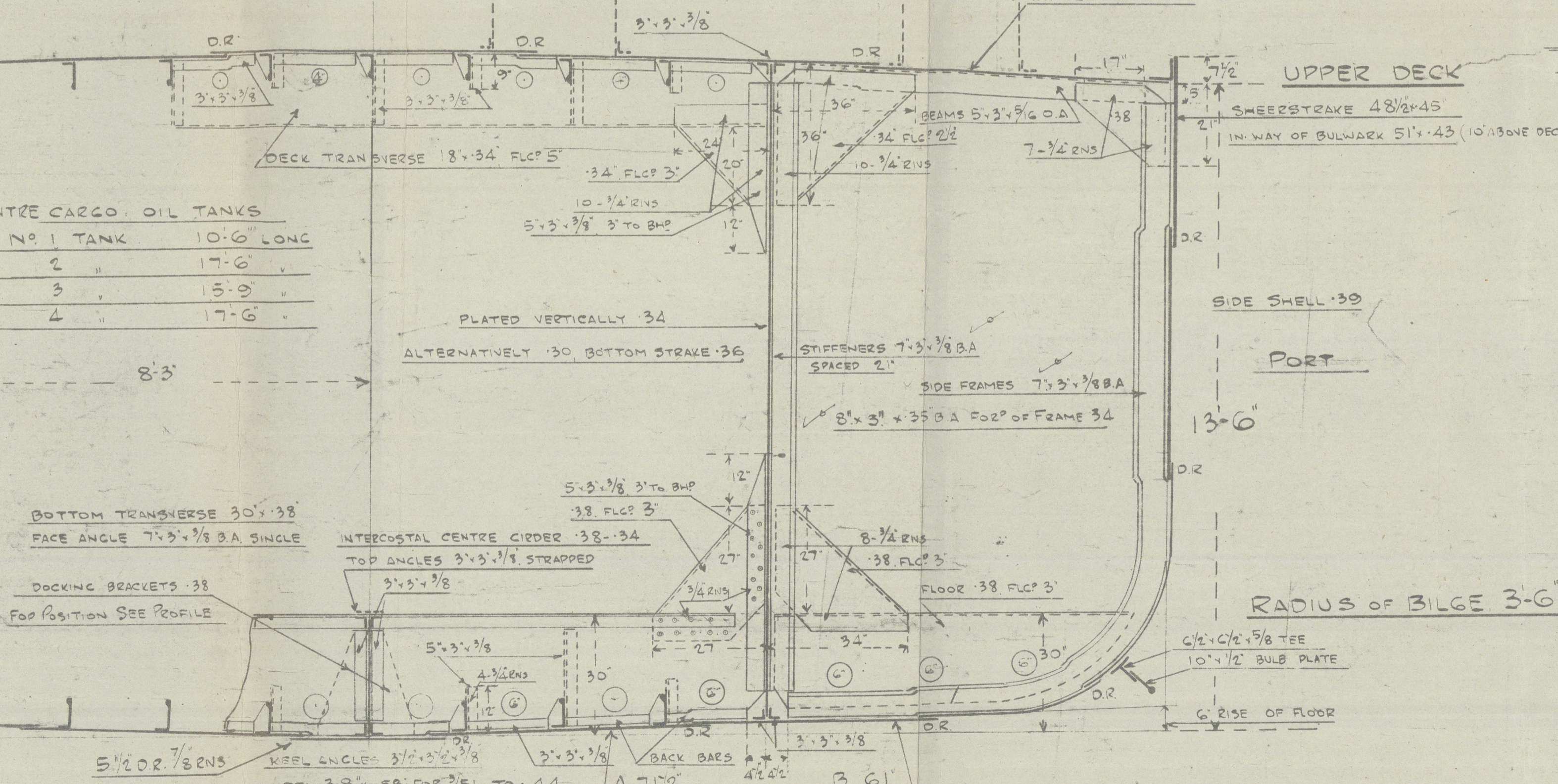
STEM 6 1/2" x 1 1/8"
FRAME SPACING 2' THROUGHOUT

CAMBER 8

TEST HEAD 7'-0" ABOVE CROWN OF TANKS

THREE 2'-6" OPENINGS IN SAME TRANSVERSE PLANE
DECK LONGITUDINALS 6'-0" x 3/4" B.A. SPACED 12'-0"
DECK PLATING .40

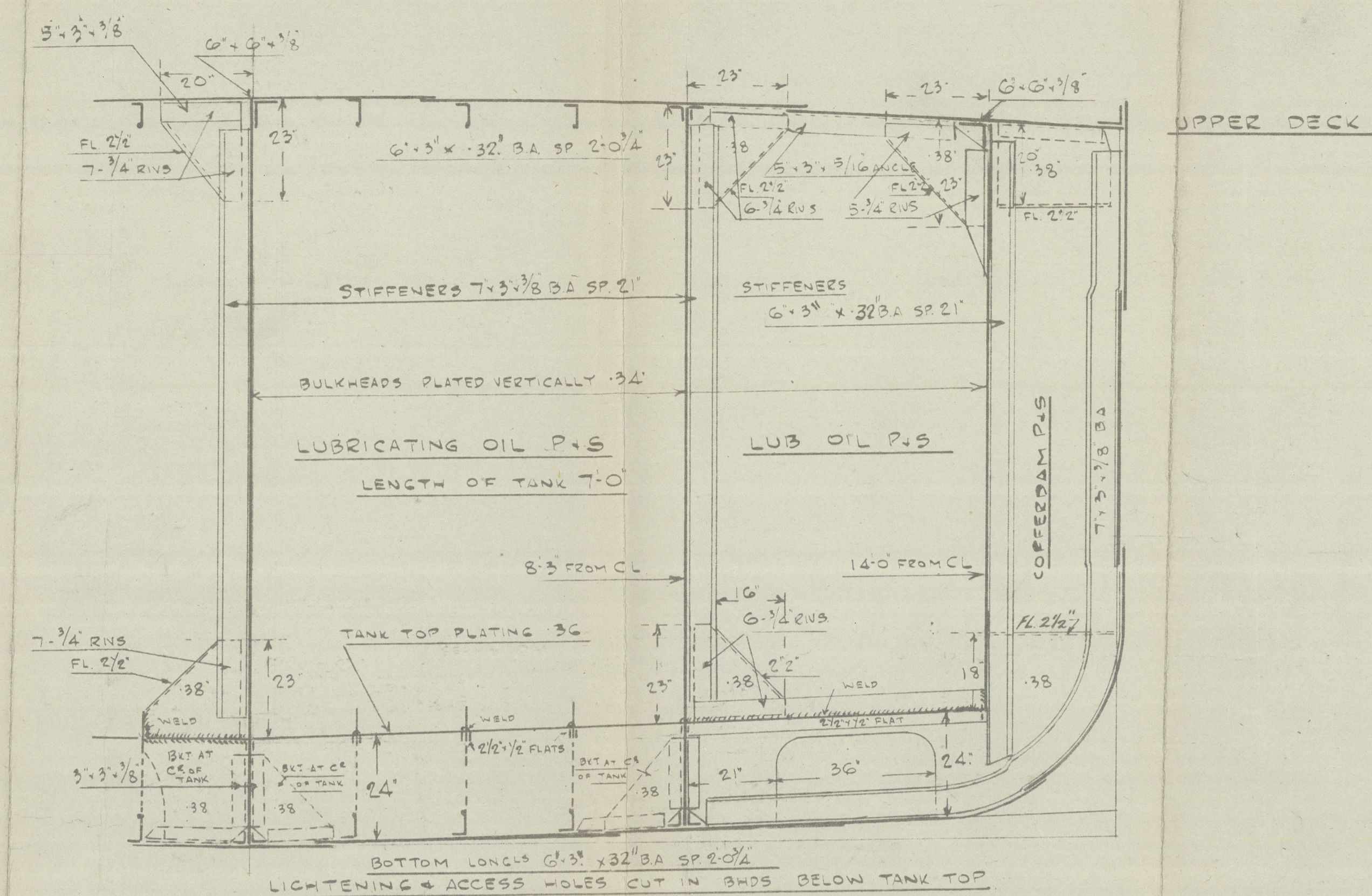
STINGER ANGLE 6'-0" x 1/2" BUTTS STRAPPED
STINGER 7'-7" x 48"



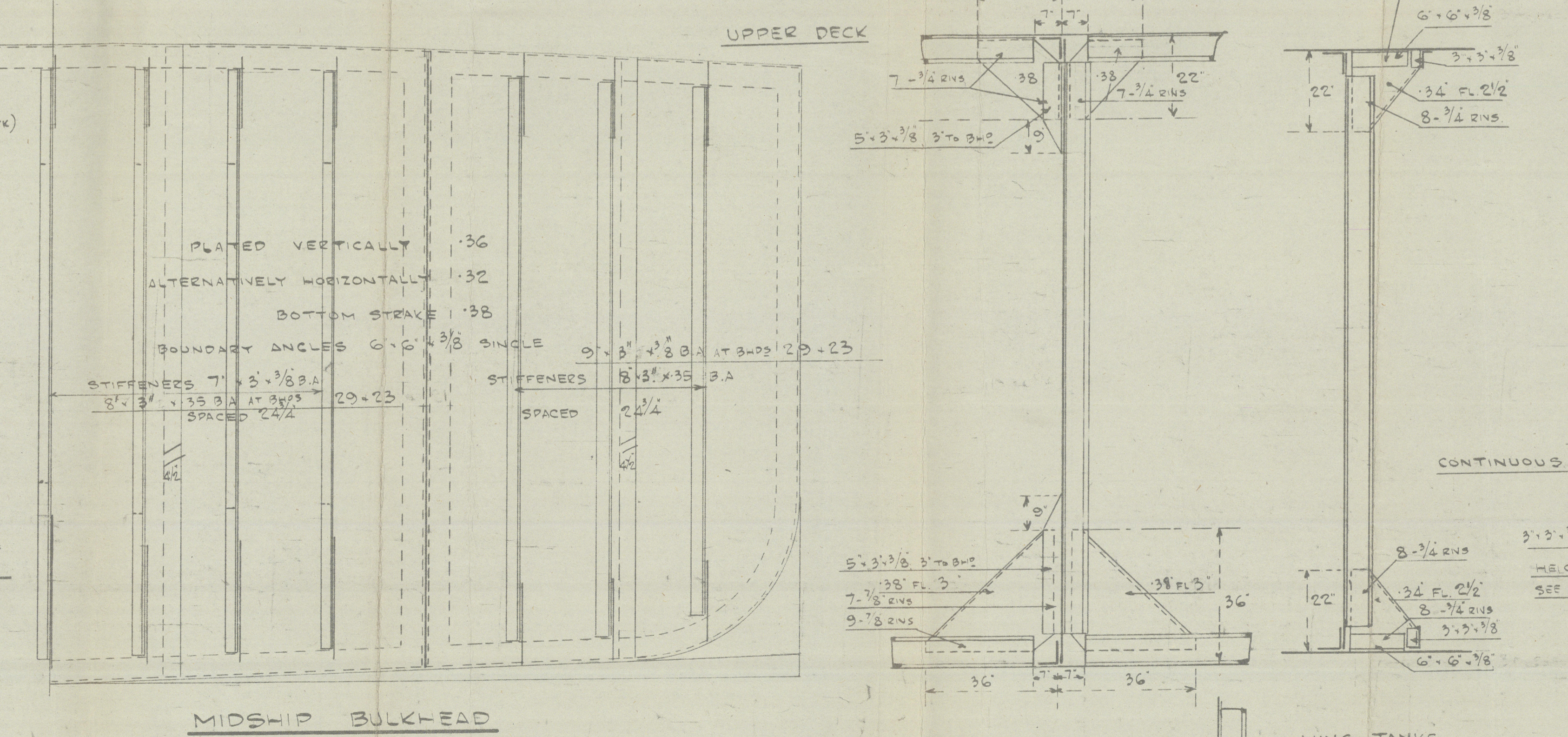
SECTION THROUGH BOILER SPACE

NO 1 TANK	10'-0" LONG
2	17'-0"
3	15'-0"
4	17'-0"

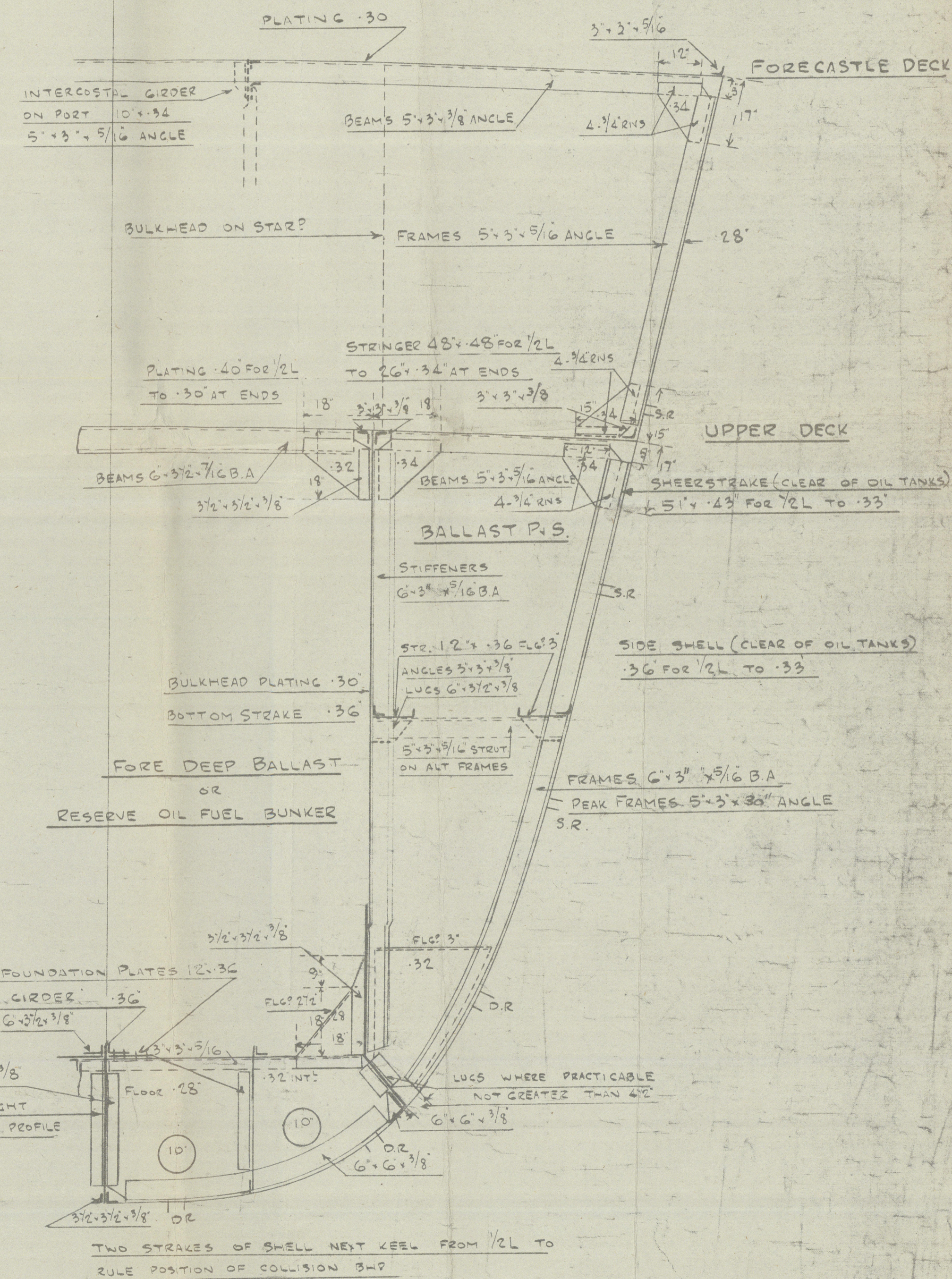
SECTION THROUGH OIL TANKS LOOKING AFT



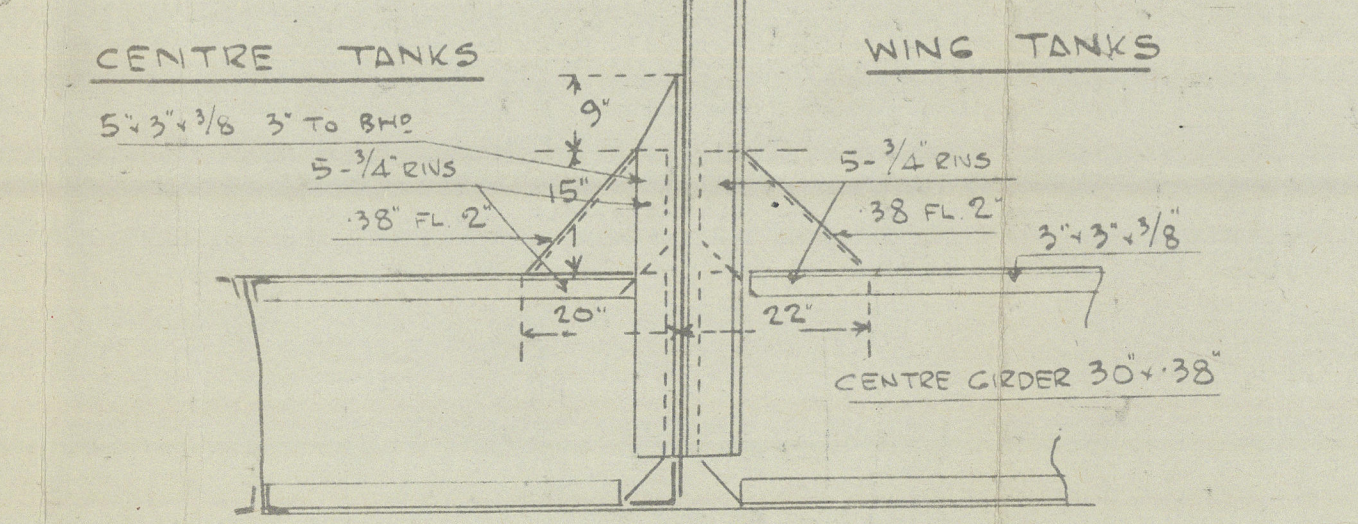
SECTION THROUGH LUBRICATING OIL TANKS



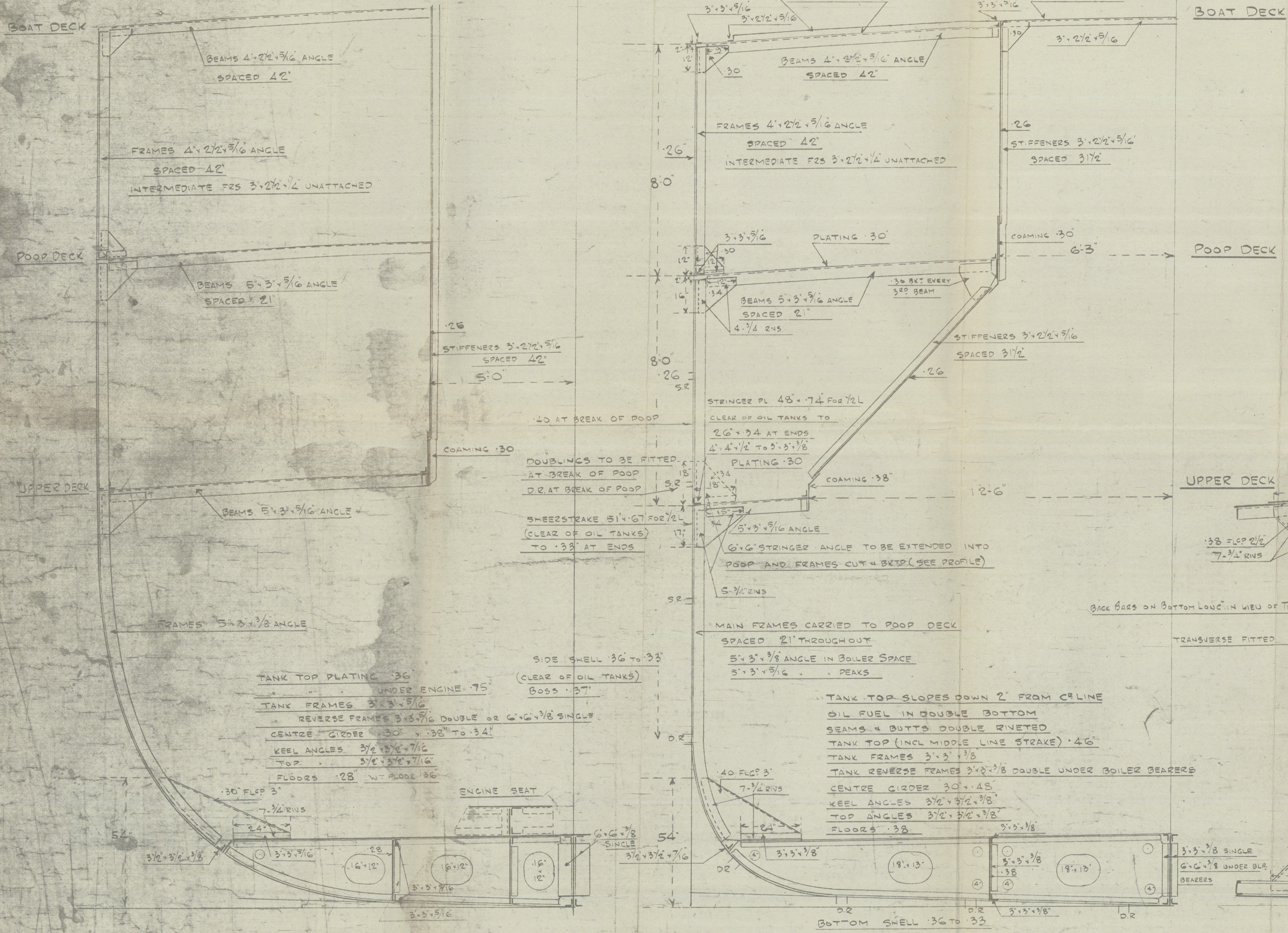
MIDSHIP BULKHEAD



SECTION FORWARD



CONNECTION BETWEEN CENTRE GIRDER & O.T. B.M.S.



SECTION THROUGH ENGINE SPACE

S/S "AIRSPRITE".

BLYTHSWOOD S. B. CO LTD.

Nº 72

MIDSHIP SECTION.

(AS BUILT)

(Similar to S/S "Masprite") Gls Rm. 63500

GLASGOW REPORT No. 66613

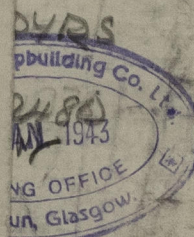
RETAIN

K

OF OIL TANKS)
0.33"

rec'd 4/2

IL TANKS)



003937-003947-0246

003937-003947-0246

© 2020

Lloyd's Register
Foundation