

HARLAND & WOLFE LTD  
SHIPBUILDERS & ENGINEERS  
GREENOCK

PLAN N° 76

DATE: 23/10/23

N° 659.

# MIDSHIP SECTION.

DIMENSIONS 500'-0" B.P. x 63'-0" M.L. x 37'-9" K. to B.

SCALE 1/2" = 1 FOOT.

CLASS 100A1 WITH FREEBOARD.

ASSIST. 23/10/23  
24/10/23  
23/10/23

23/10/23

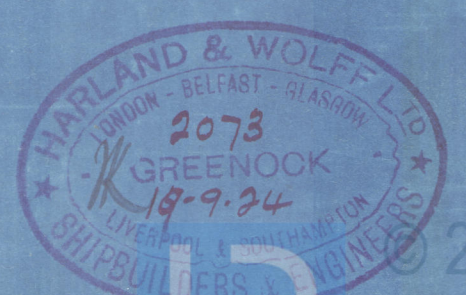
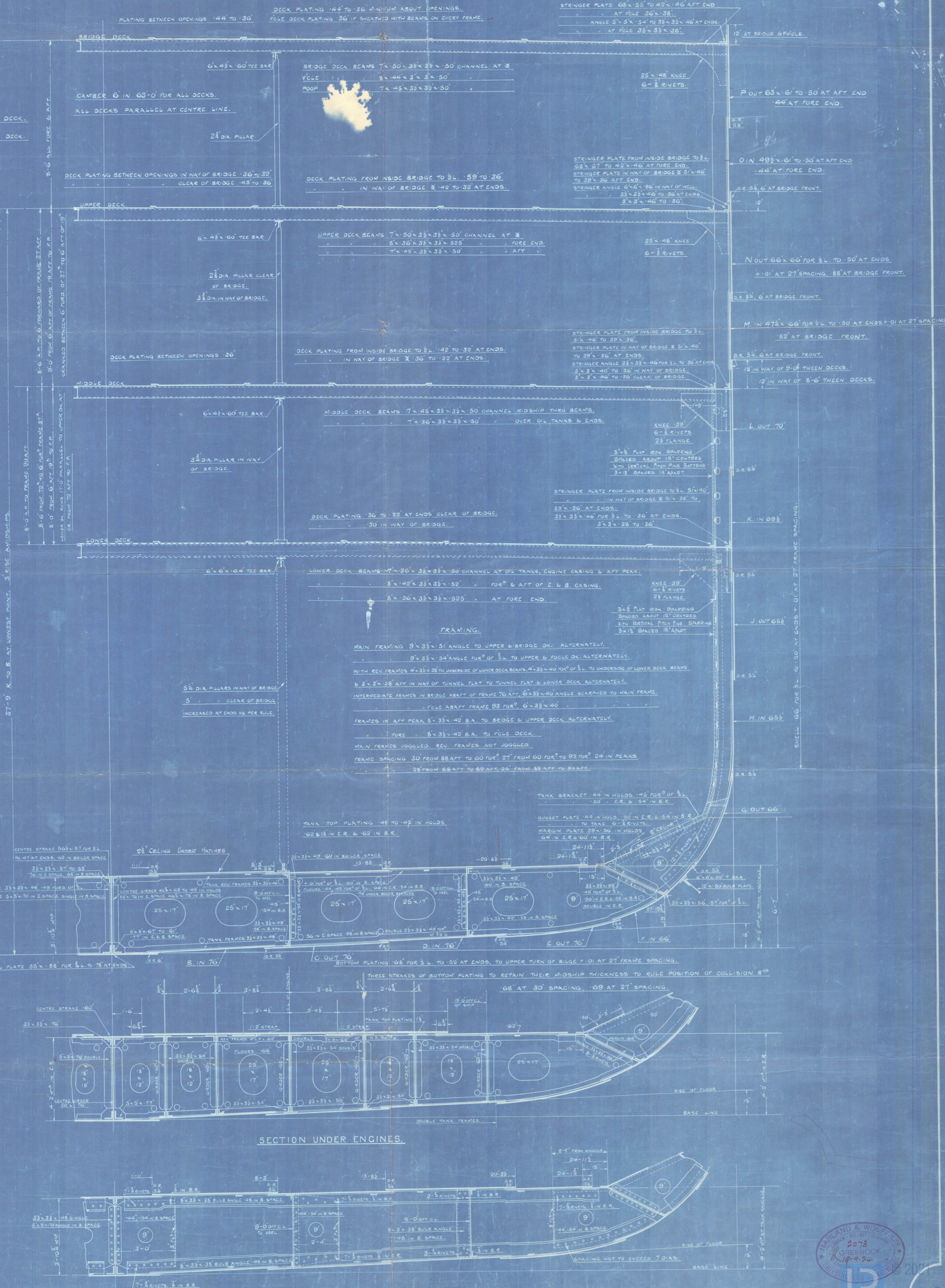
P.D. 23/10/23  
GOVIN 23/10/23  
BELFAST WKS. 6/11/23

## NUMERALS

L x D = 18731  
L x (S+D) = 50199  
DIF. DF = 13.32 TO UPPER DECK.  
DIF. DF = 10.86 TO BRIDGE DECK.

## ANCHOR & CABLE EQUIPMENT.

2 BOWER ANCHORS EACH 100 CWT STOCKLESS  
1 STREAM ANCHOR 57 CWT  
550 FT 2 1/2" STUD CHAIN CABLE (WITH FORGED STEEL STUDS)





MIDSHIP SECTION OF SHIP AS BUILT.

HARLAND AND WOLFF'S No. 659.

T.S.S. "RAZMAK"

GRK. RPT. No. 18307.



© 2021

Lloyd's Register  
Foundation

003971-003979-0078