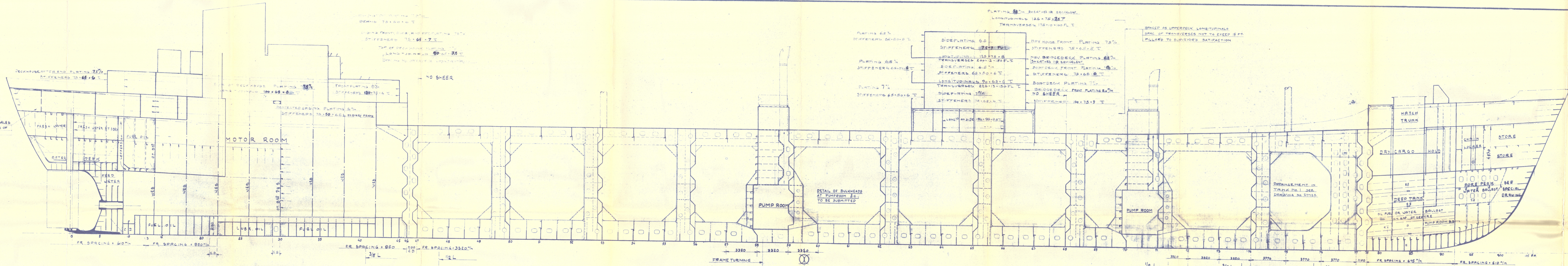


SCANTLING OF LONGITUDINALS
TO BE CONFIRMED ON PLAN OF
CRUISER STERN.



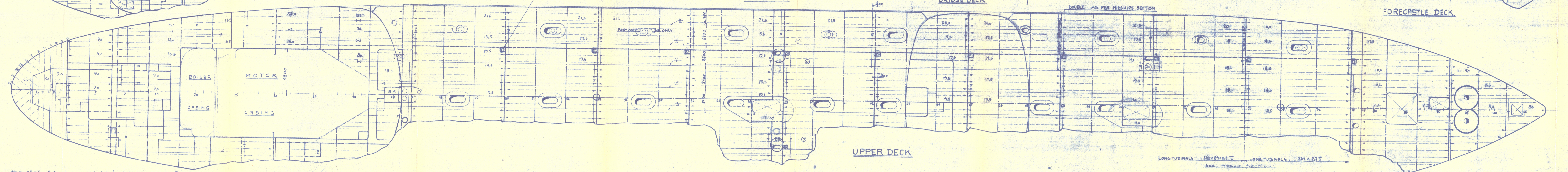
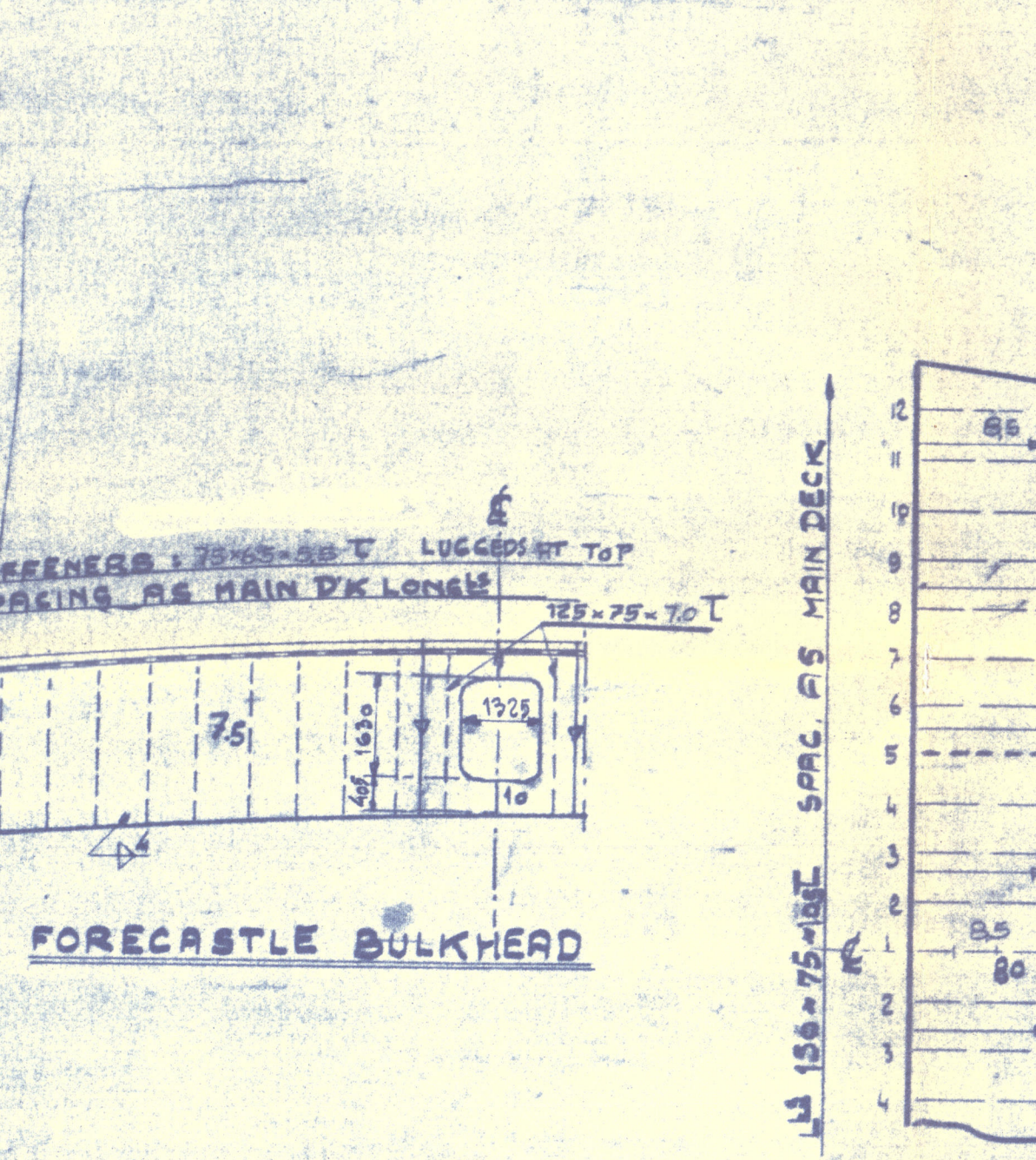
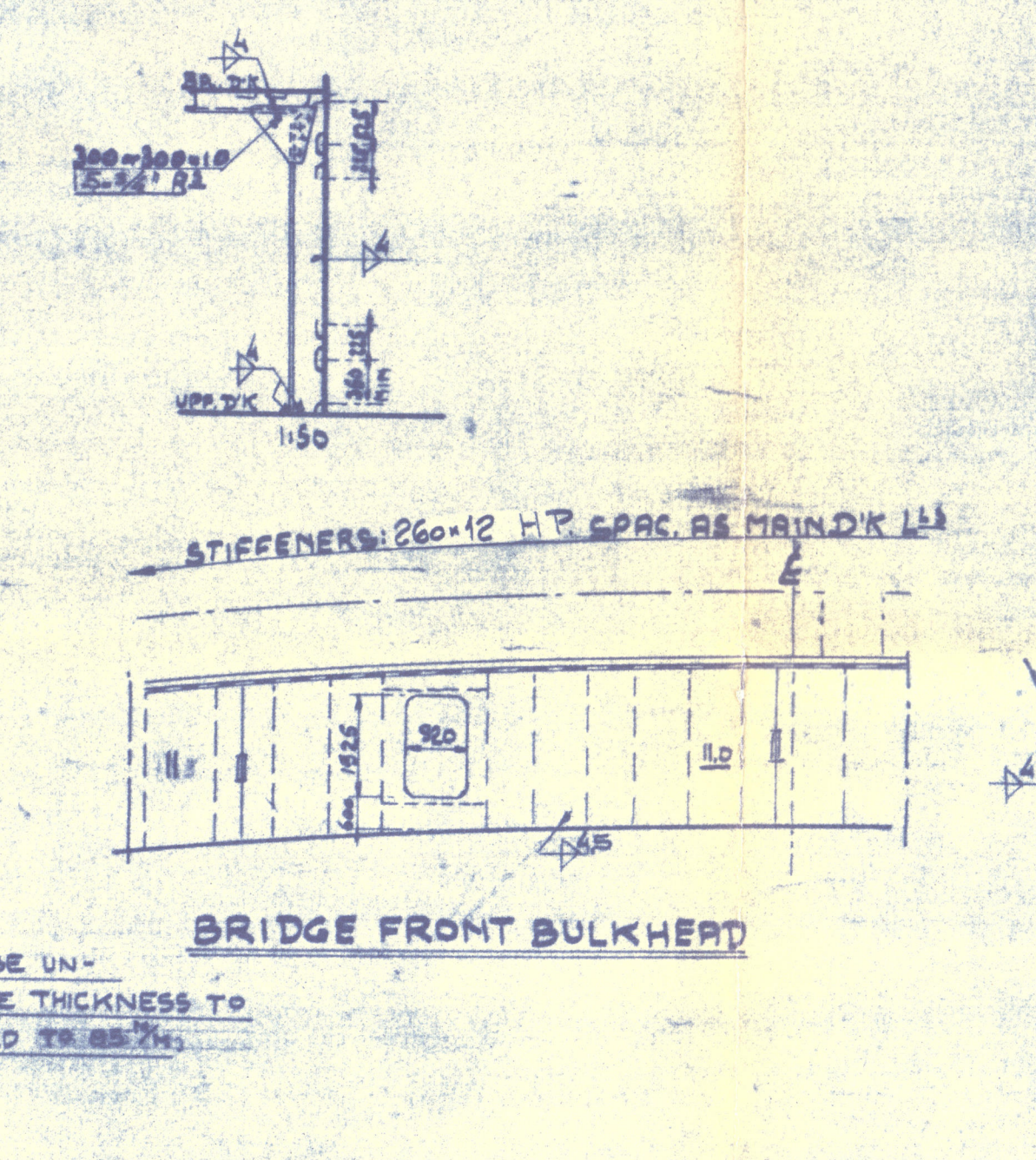
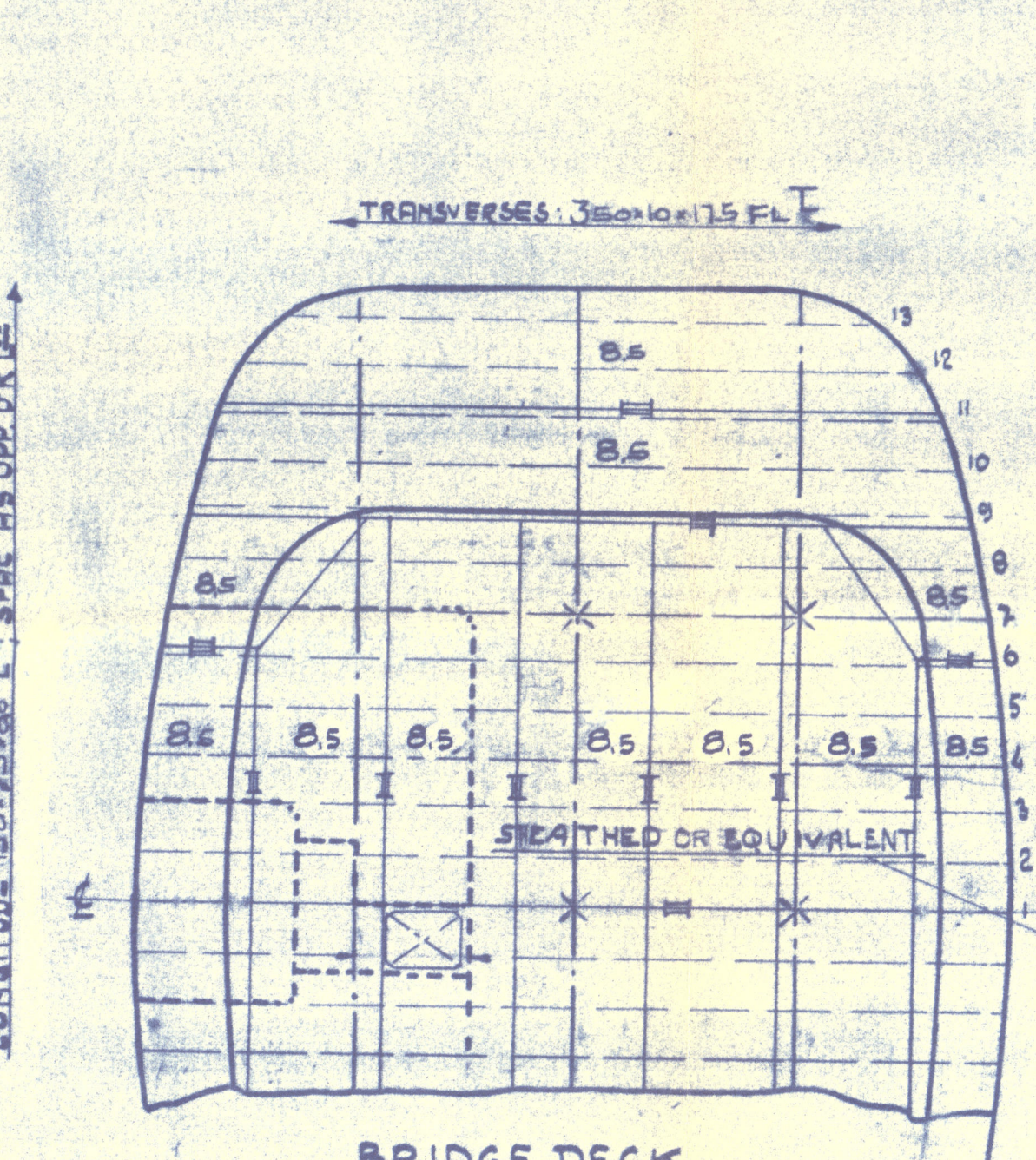
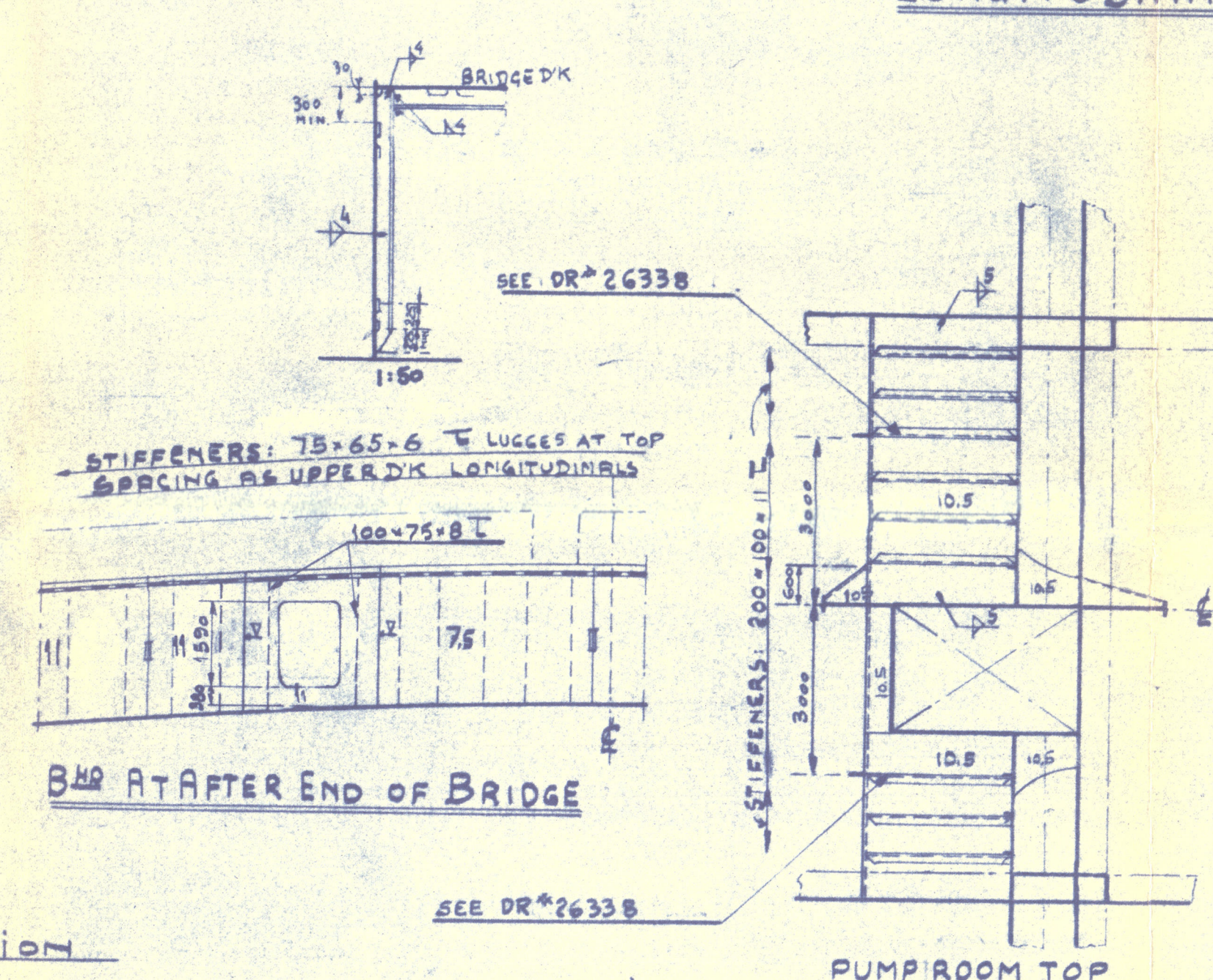
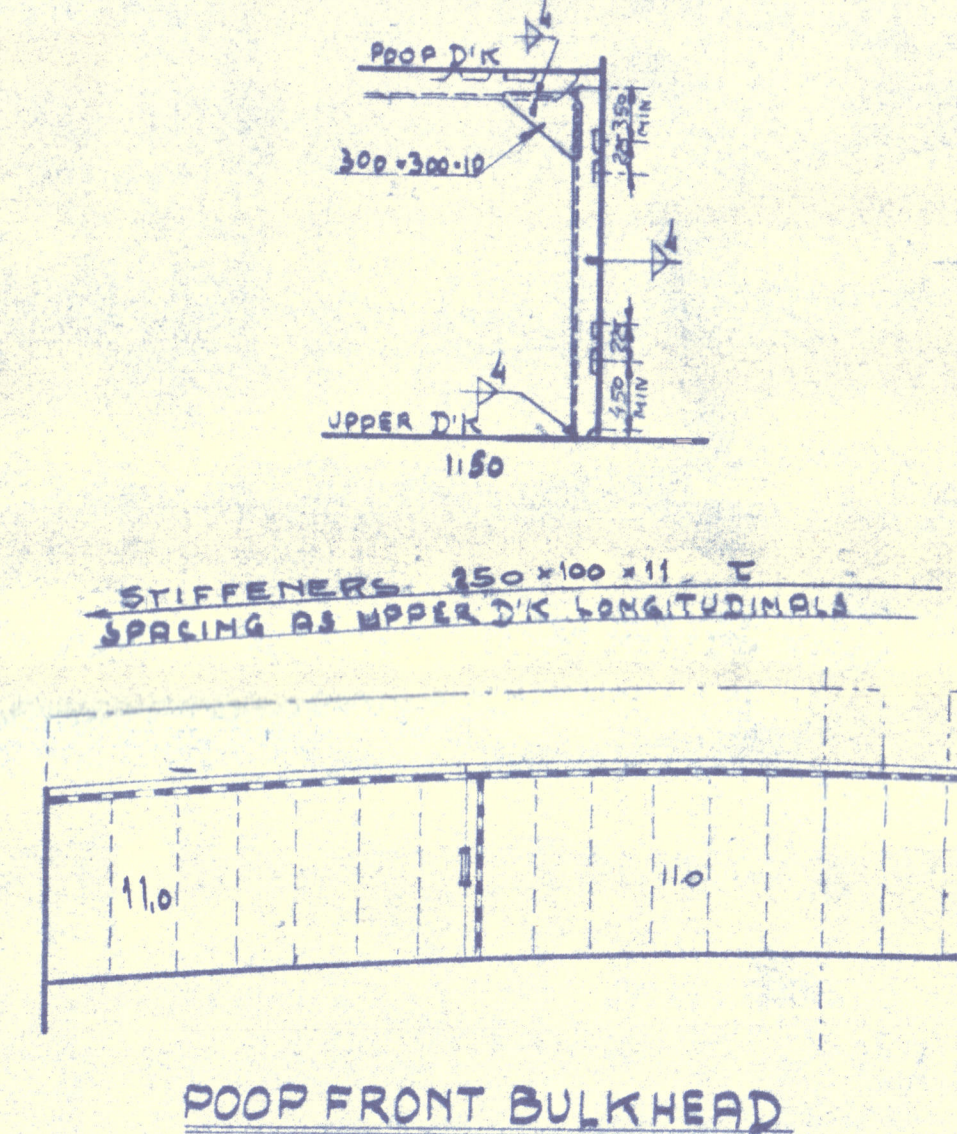
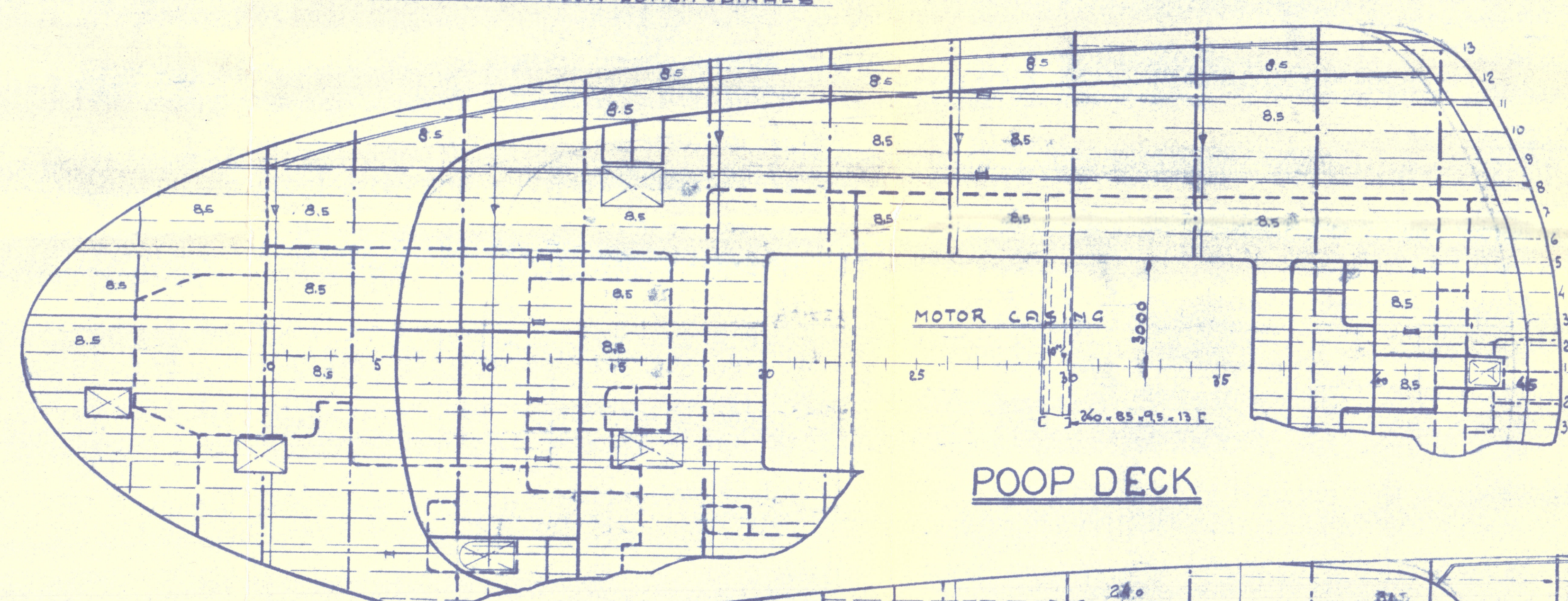
CRUISER STERN, AFTER PEAK, MOTOR ROOM
DOUBLE BOTTOM, TANKTOP, MOTOR SEATING
AND O.T. BUNKER, OIL FUEL BUNKER, IN E.R.
SEE SPECIAL DRAWING.

WINDLASS, STEERING GEAR AND MASTS
TO BE SUPPORTED TO SURVEYORS SA-
TISFACTION.

FOREPEAK, DEEP TANK, FWD AND DRY CARGO HOLD
TO BE SUBMITTED-ALSO DETAIL OF
AND STRENGTHENING OF BOTTOM FORWARD.

LONGITUDINAL BULKHEAD

THICKNESS GIVEN UNHEATED DECK, IF DECK TO BE
HEATED WITH WOOD OR APPROVED COMPOSITION, 3/4" THICK.
THE THICKNESS TO BE REDUCED BY 10% EXCEPT STRAINERS IF OPEN WATERWAY.



DIMENSIONS:

LENGTH OVER ALL	550'-0" = 167.64 m.
BETWEEN PP	515'-0" = 156.97 m.
BREADTH MOULDED	64'-0" = 19.51 m.
DEPTH TO MAIN DECK	38'-6" = 11.73 m.
HEIGHT OF POOP	8'-0" = 2.44 m.
BRIDGE	8'-0" = 2.44 m.
FORECASTLE	8'-0" = 2.44 m.
THE LENGTH (L)	516'-0" = 157.25 m.

CLASS
LLOYDS REGISTER + 100A1 CARRYING PETRO-
LEUM IN BULK
SPECIAL NOTATION "LONGITUDINAL FRAMING"
ELECTRICALLY WELDED.

BOTHENBERG FIRST ENTRY REPORT NO. 19510


AS FITTED PER
HULL DESIGNER'S DRAWING OF 19510
APPROVED 23/10/50
[Signature]

LONGITUDINAL SECTION
LEVERANSRITING

29729

RECORDS DEPT.
LONDON

5

Petra Dan 
Longitudinal section & plans
(as fitted)

M/N WATFORD TRADER

004003-004008-0104



© 2021

Lloyd's Register
Foundation