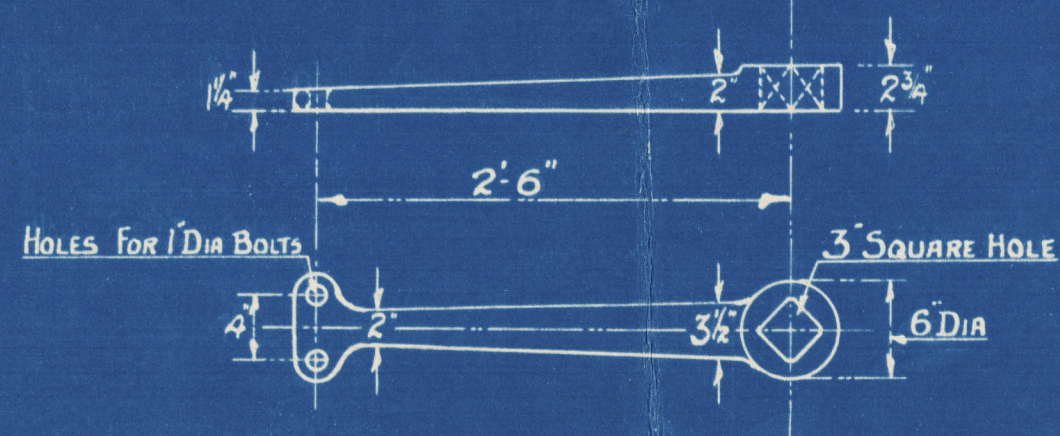


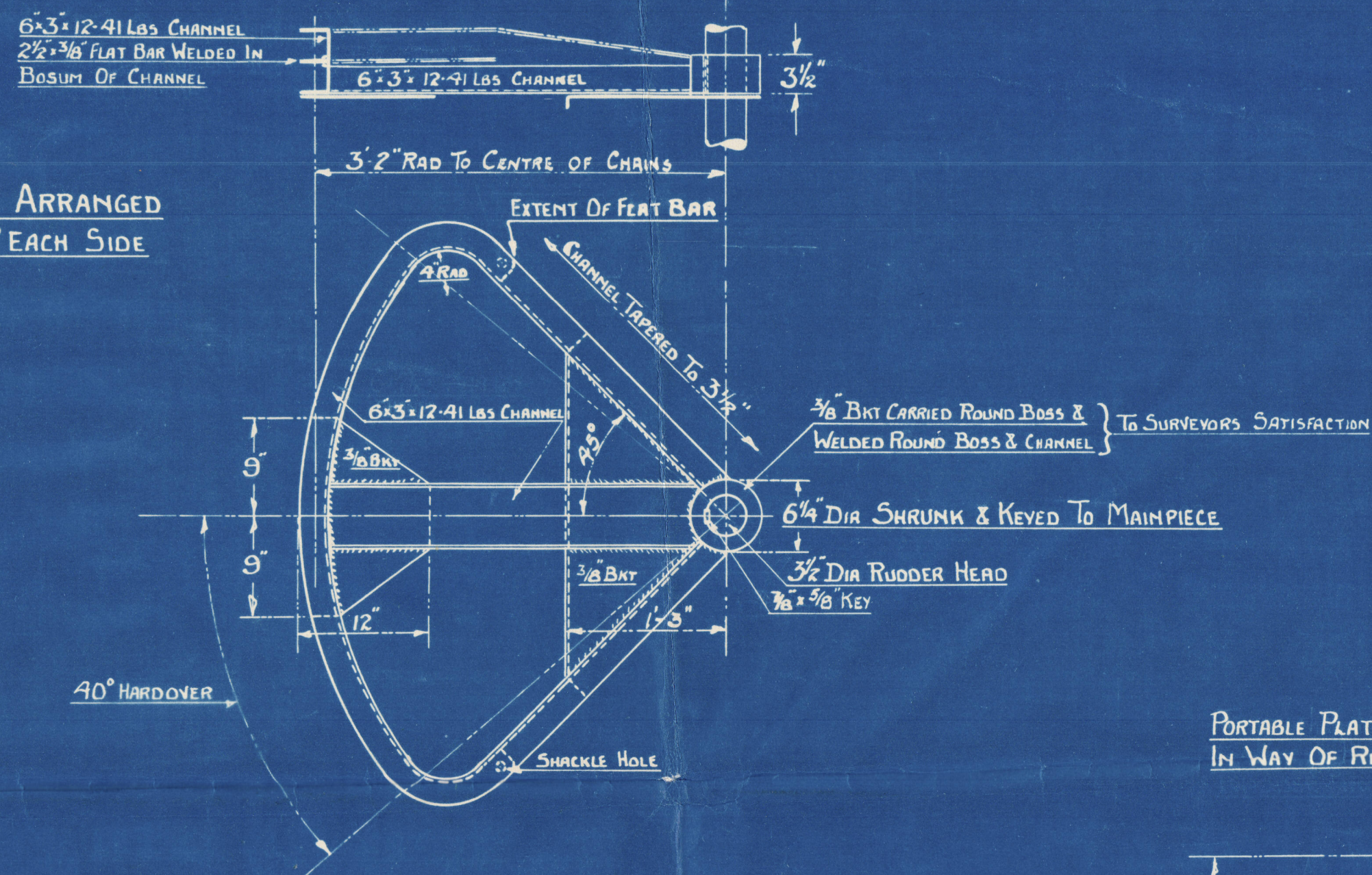
$A \times D = (5.75 \times 5) \times 1.33 = 38.24$   
 DIAM OF RUDDER HEAD  $3\frac{1}{2}$ " DIAM  
 RADIUS OF QUADRANT  $3'-2"$  TO CR OF CHAINS  
 DIAM OF STEERING CHAINS  $\frac{9}{16}$ "  
 DIAM OF STEERING RODS  $\frac{7}{8}$ "

Speed assumed not to  
 exceed 12 knots

DETAIL OF SPARE TILLER

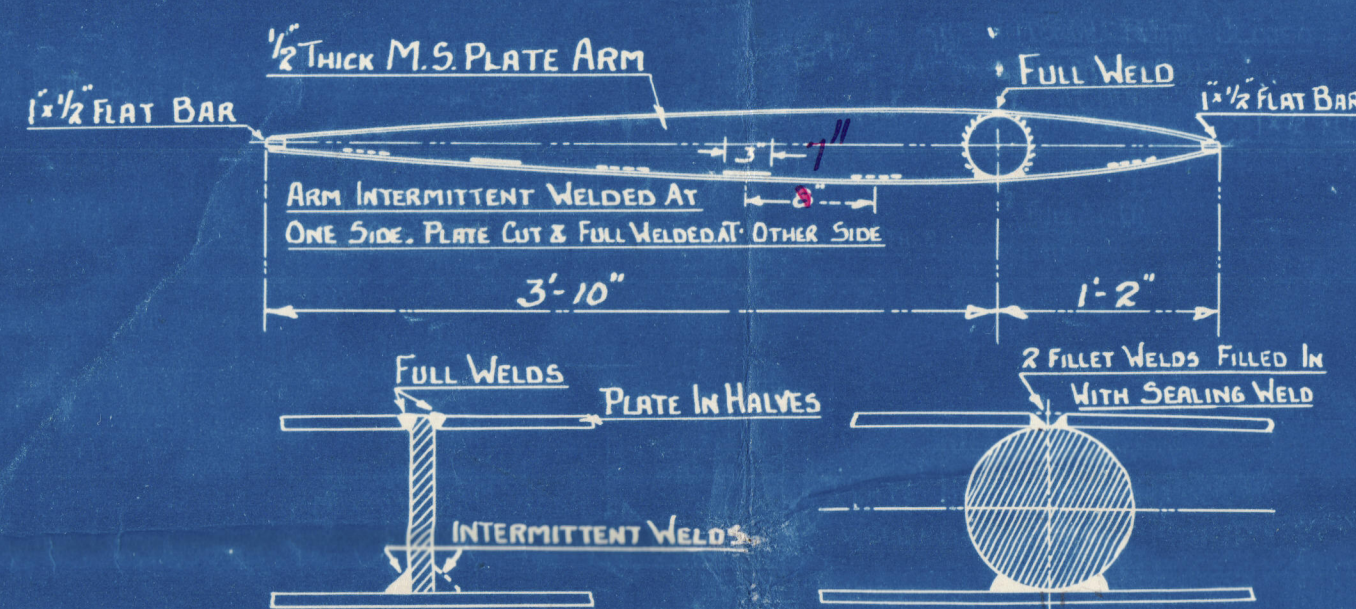


DETAIL OF QUADRANT

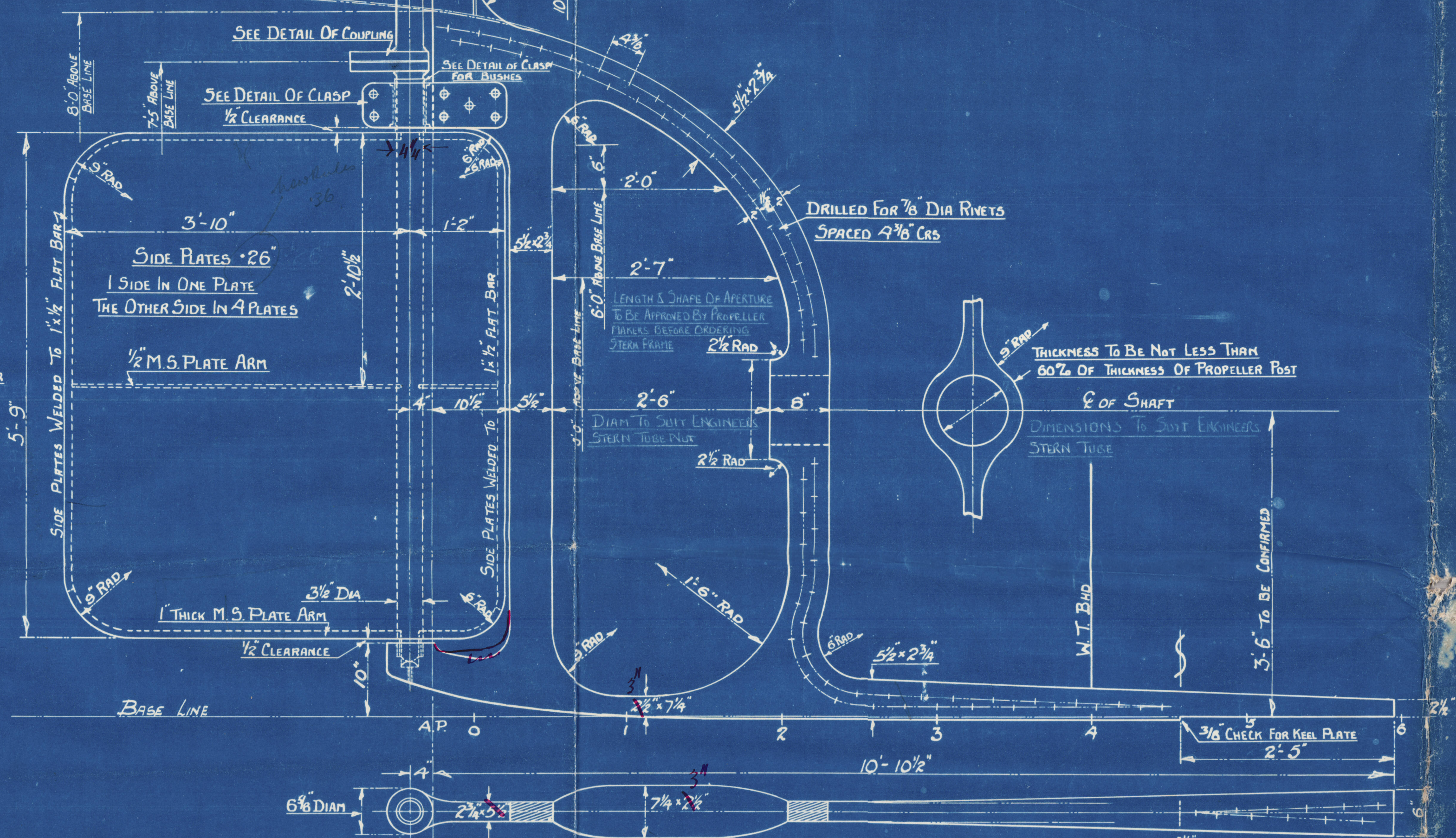


DECK STOPS TO BE ARRANGED  
 FOR QUADRANT 40° EACH SIDE  
 OF CENTRE LINE

DETAIL OF RUDDER ARM

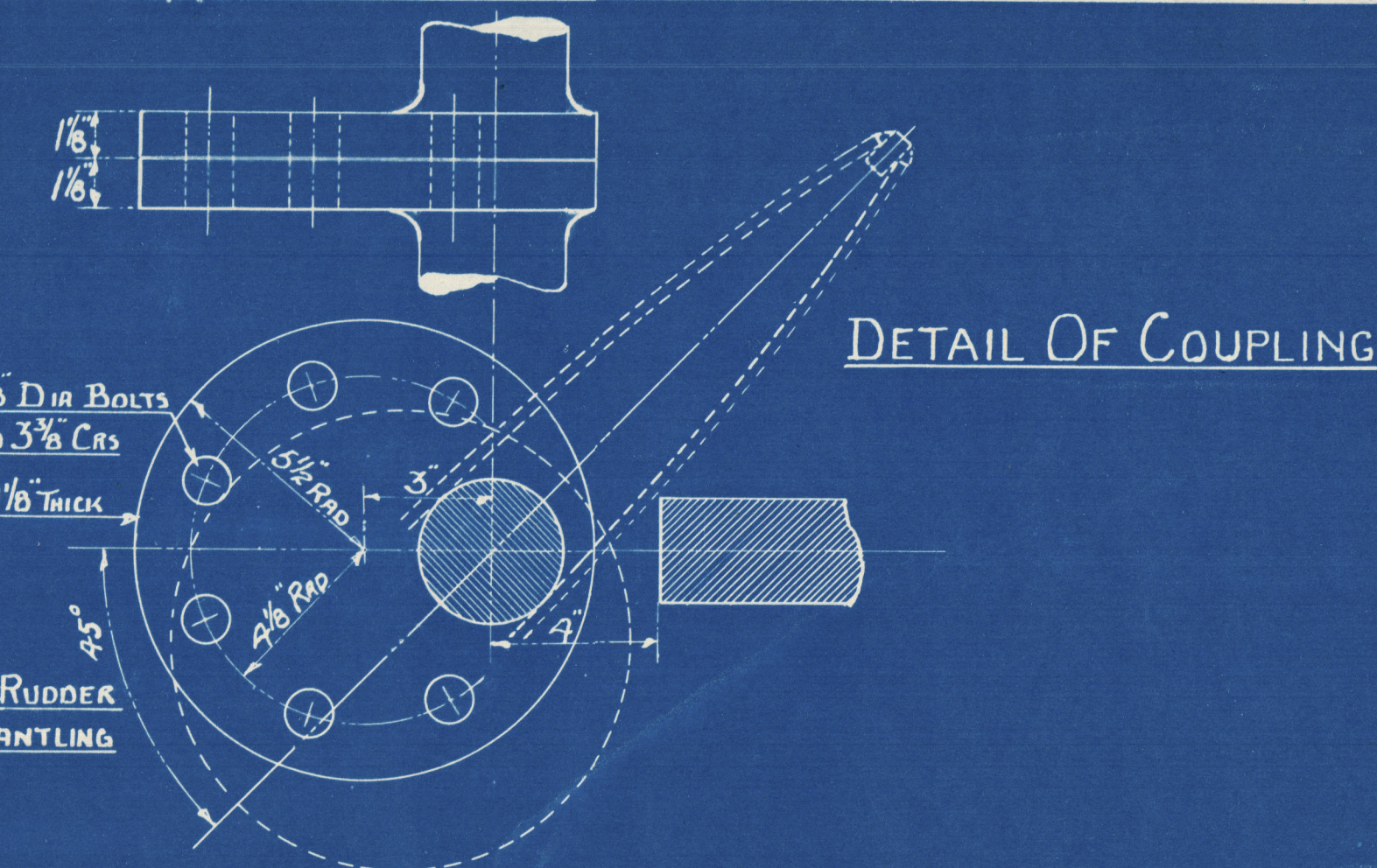


DETAIL OF WELDING RUDDER



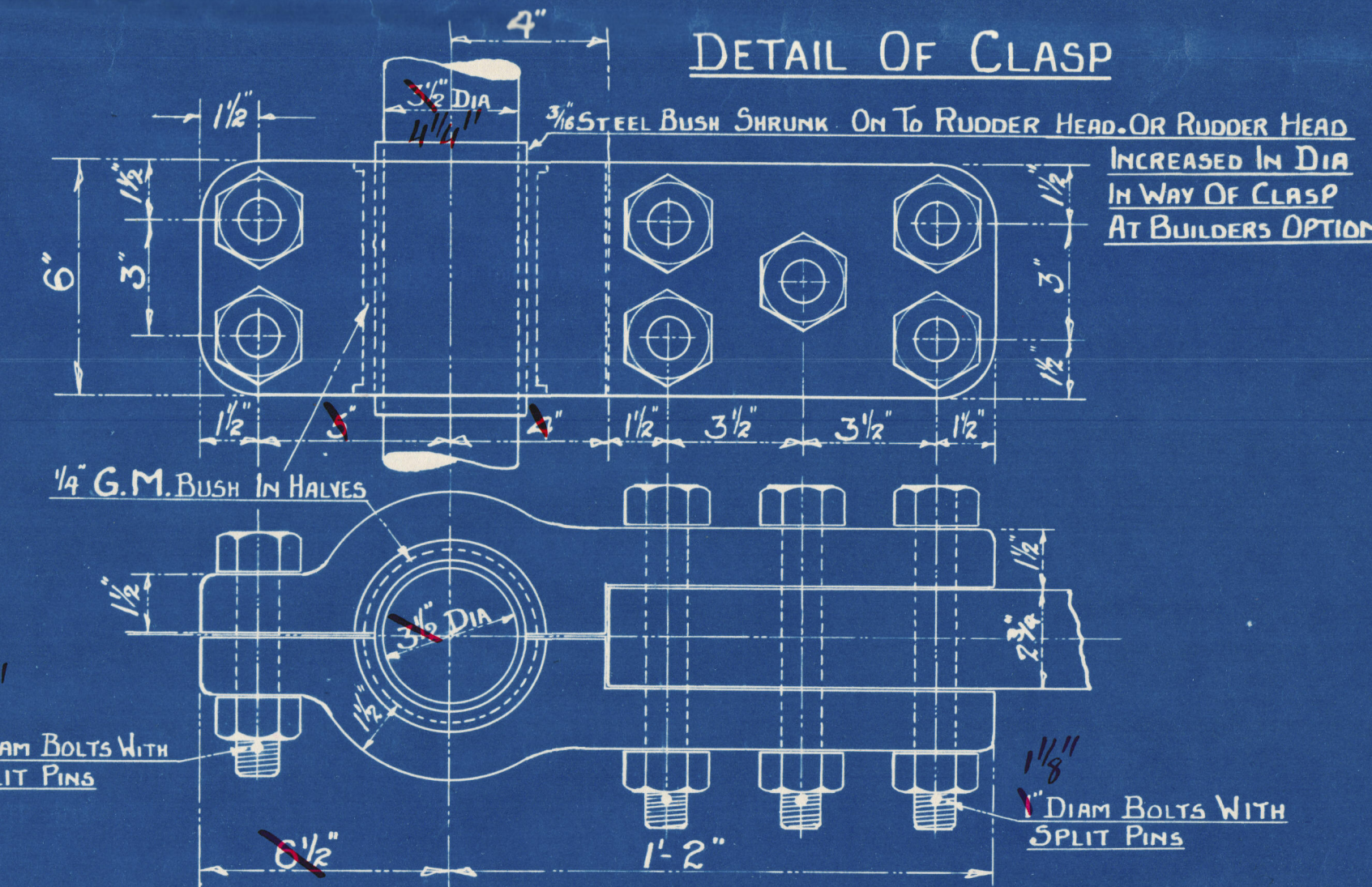
SECTIONS OF STERN FRAME FOOT  
 TO BE CONFIRMED & SHAPED  
 TO TEMPLATES SUPPLIED  
 BY SHIPBUILDERS

RICHARD DUNSTON LTD.  
 SHIPBUILDERS,  
 THORNE, YORKSHIRE

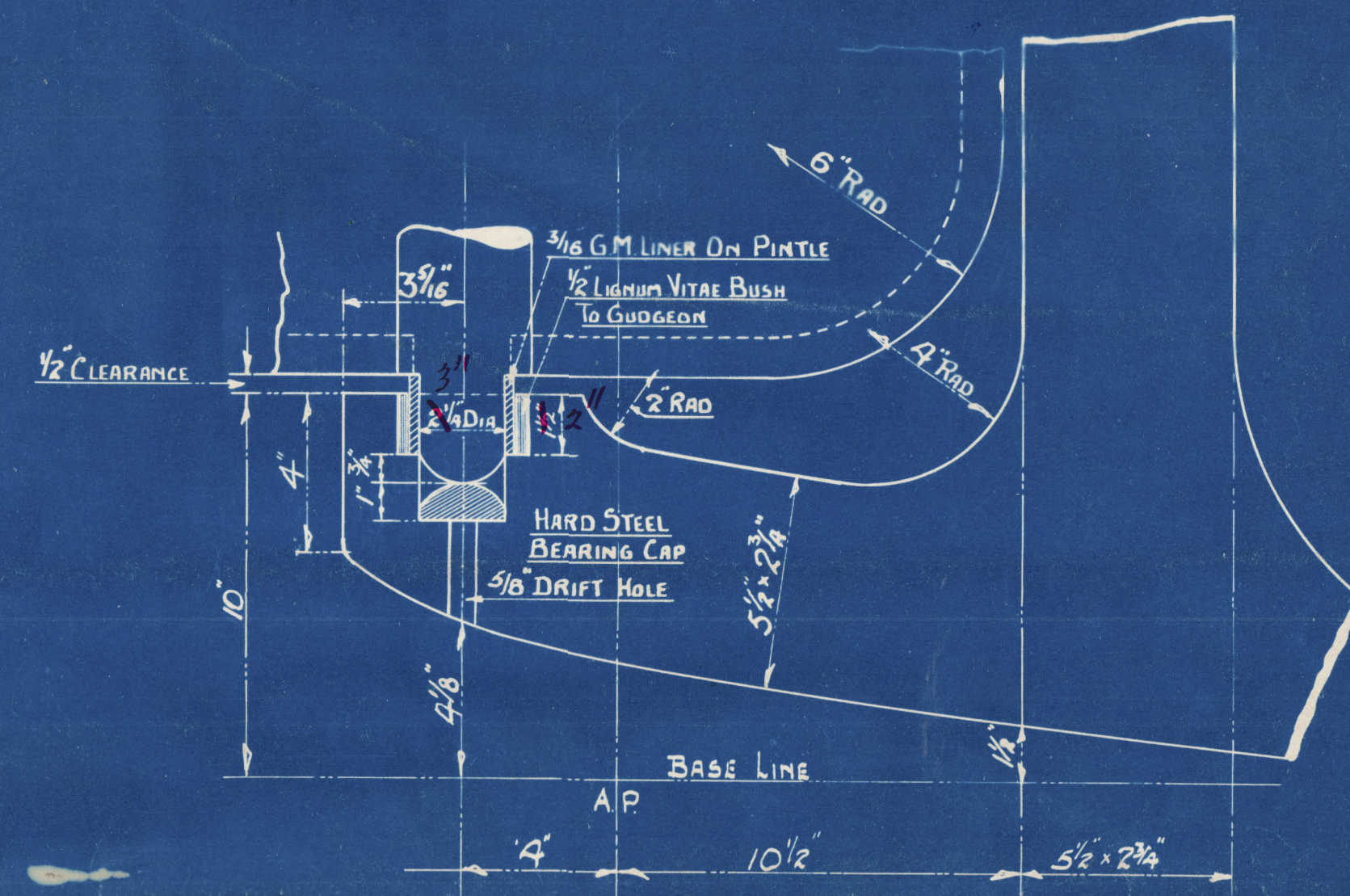


DETAIL OF COUPLING

DETAIL OF CLASP



DETAIL OF BOTTOM PINTLE & GUDGEON



TO LLOYDS REQUIREMENTS TESTS & CERTIFICATES  
 FOR SURVEY CLASS 100 A.1. (COASTAL TRADING)

MATERIAL

STERN FRAME :- MILD STEEL OR BEST HAMMERED SCRAP IRON  
 RUDDER & MAINPIECE :- MILD STEEL  
 COUPLING CLASP & QUADRANT :- MILD STEEL  
 QUADRANT BOSS & SPARE TILLER :- FORGED IRON

"Rose Julie M"

This Drawing and the Information it contains are the Property of RICHARD DUNSTON LTD.  
 It is not to be Traced, Copied or Published without their Written Consent, nor is the  
 Information thereon to be misused in any way.

YARD No. 5416/7 DRG. No. 2435

TITLE :- STERN FRAME & RUDDER

SCALE :- 1" = 3" TO ONE FOOT

DRAWN BY	DATE
TRACED BY	DATE
CHECKED BY	DATE
REVISIONS	
No.	DATE
PARTICULARS	