

STERN & RUDDER FRAMES.

SURVEY LLOYDS.

SCALE $\frac{3}{4}" = \text{ONE FOOT.}$

NOTE! FIGURED DIMENSIONS ONLY TO BE WORKED TO.

MATERIAL

STERN FRAME FORGED IRON OR STEEL

RUDDER " " " "

" STOCK " " " "

A * D NOT EXCEEDING 192

SPEED " " 10 KNOTS

COUPLING.

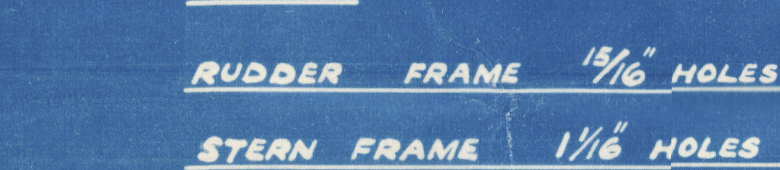
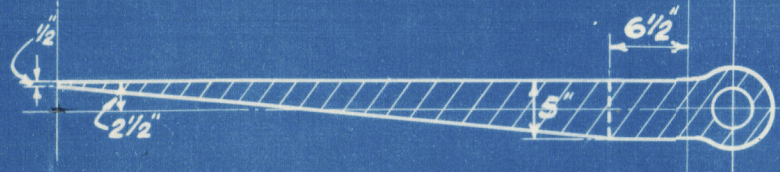
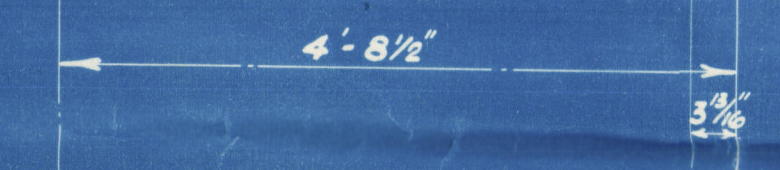
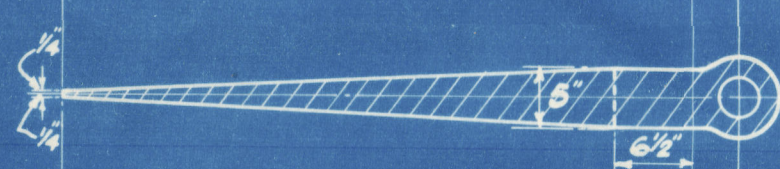
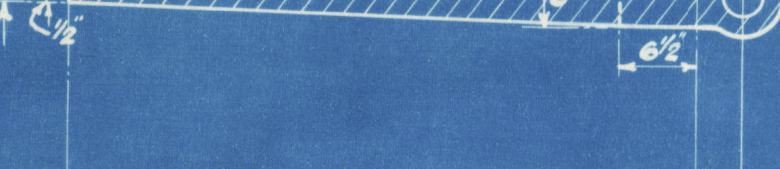
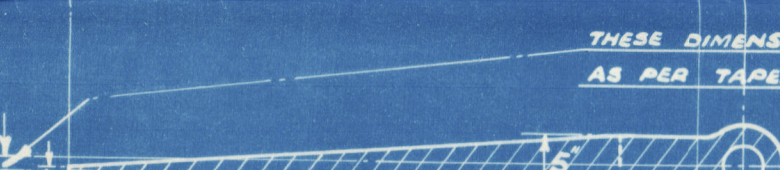
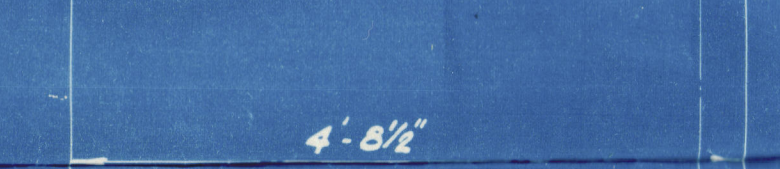
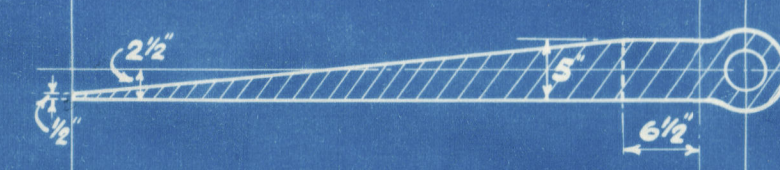
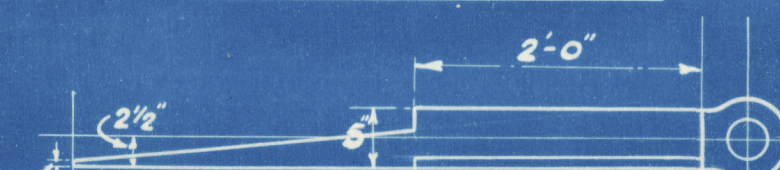
7 STEEL FITTED BOLTS 2" DIA.

CHECK PINS FITTED TO ALL BOLTS

PAYING SURFACES OF COUPLING

TO BE MACHINED.

PLAN AT RUDDER TOP



AT AFT END OF RUDDER
LOOKING FORD.

SECTION

THRO' BOTTOM ARM.

SECTION THRO' BOTTOM ARM.

SECTION THRO' BOTTOM ARM.

SECTION THRO' BOTTOM ARM.

SECTION THRO' BOTTOM ARM.

SECTION THRO' BOTTOM ARM.

SECTION THRO' BOTTOM ARM.

SECTION THRO' BOTTOM ARM.

SECTION THRO' BOTTOM ARM.

SECTION THRO' BOTTOM ARM.

SECTION THRO' BOTTOM ARM.

SECTION THRO' BOTTOM ARM.

SECTION THRO' BOTTOM ARM.

SECTION THRO' BOTTOM ARM.

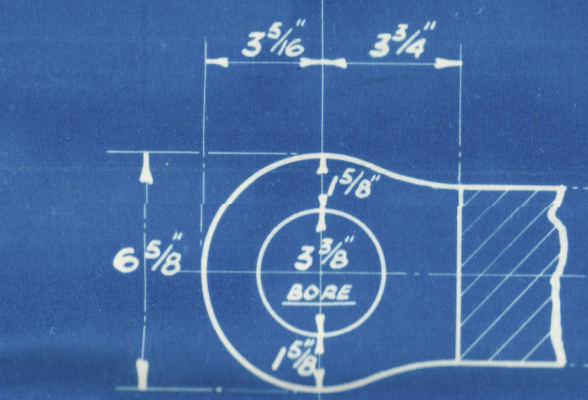
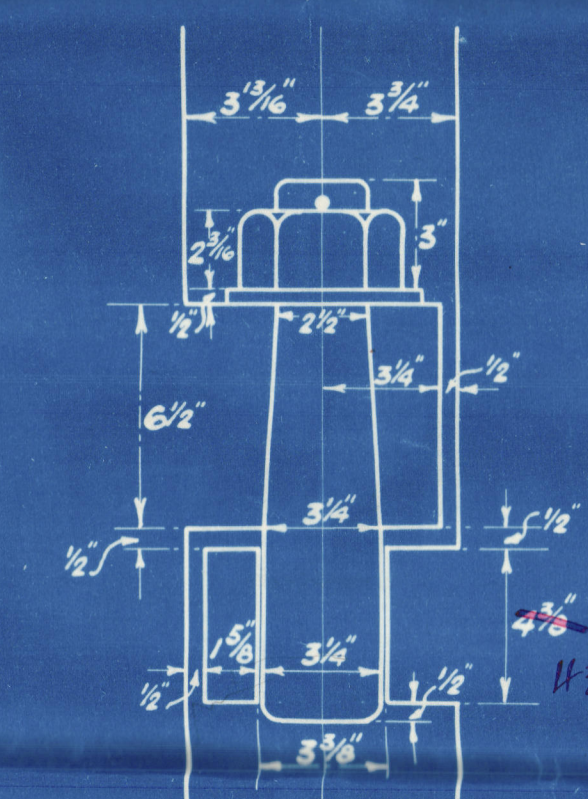
DRILLING

RUDDER FRAME $\frac{1}{8}"$ HOLES SPACED AS SHOWN.

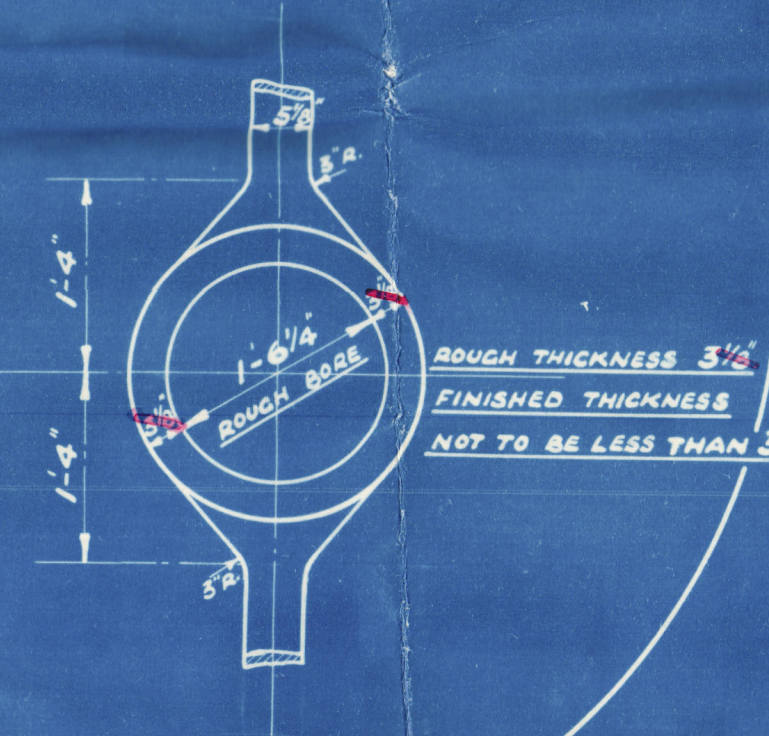
STERN FRAME $\frac{1}{8}"$ HOLES 5" APART C.T.O.C. IN EACH ROW.

DETAILS OF PINTLES & GUDGEONS.

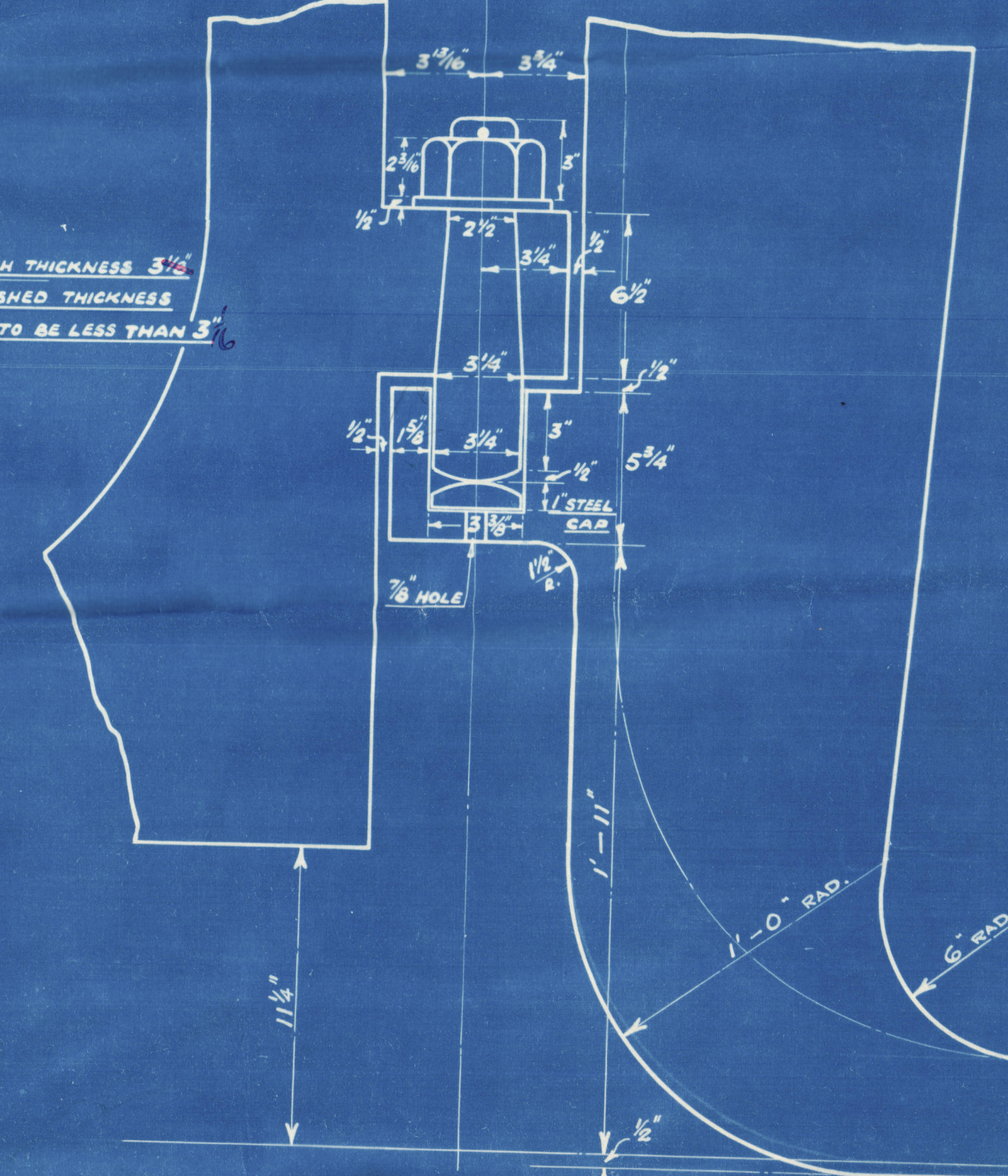
SCALE $\frac{3}{16}" = 1 \text{ INCH.}$



NOTE! CENTRE LINE OF PINTLES TO BE PERPENDICULAR TO BASE & PARALLEL TO AFTER SIDE OF RUDDER POST OF STERN FRAME AS SHOWN. ALL PINTLES TO BE OF STEEL. TO BE MADE & EFFICIENTLY FITTED AS PER DRAWING.



ROUGH THICKNESS $3\frac{1}{2}"$
FINISHED THICKNESS
NOT TO BE LESS THAN $3"$



BOTTOM GUDGEON.

APPROVED

LLOYDS REGISTER OF SHIPPING

Wickham

DATE 24.5.32



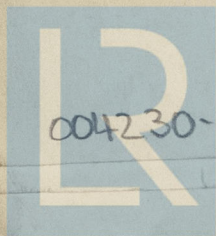
Bumtisland S. B. Co. Ltd.
No 173

**STERN & RUDDER
FRAMES**

Plan of Forgeed Stern
and Rudder Frames.

Lth Rpt. No 18282

S/S Wandle



© 2020

004230-004237-0103

Lloyd's Register
Foundation