

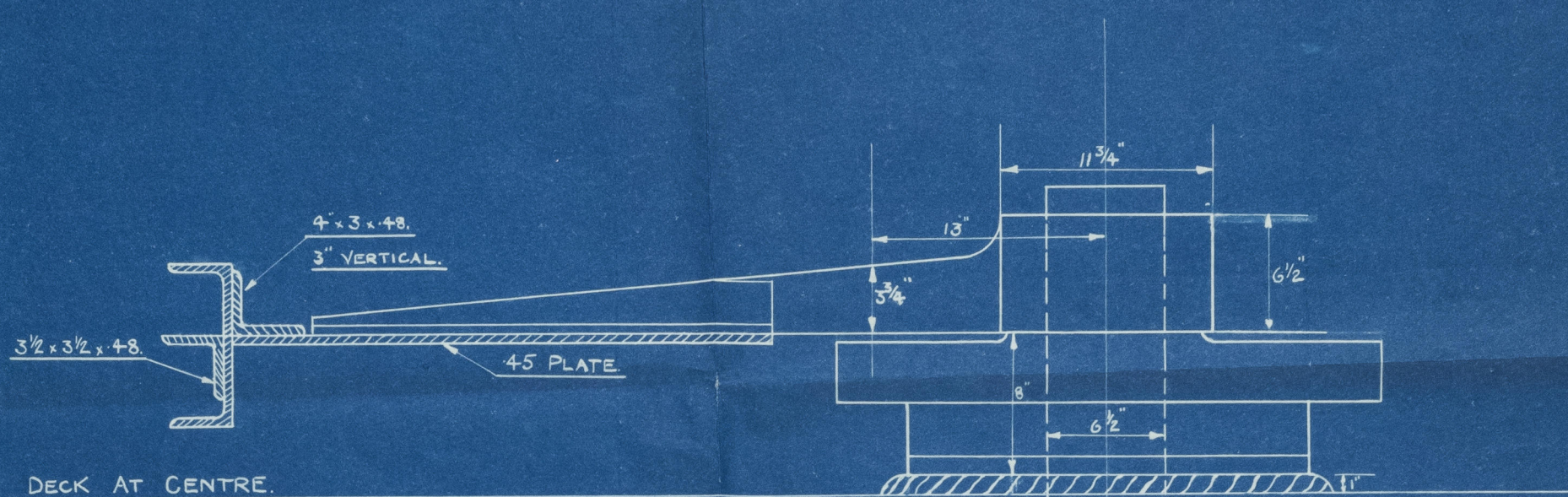
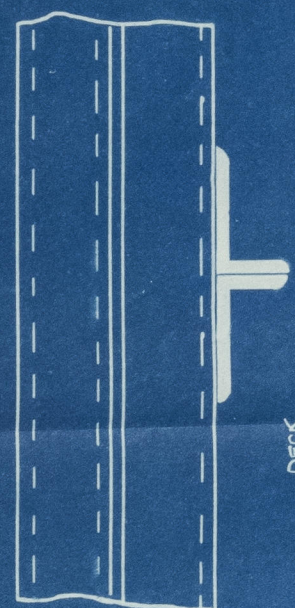
SHIP N° 173.

RUDDER QUADRANT.

SCALE : $1\frac{1}{2}" = 1 \text{ FOOT.}$

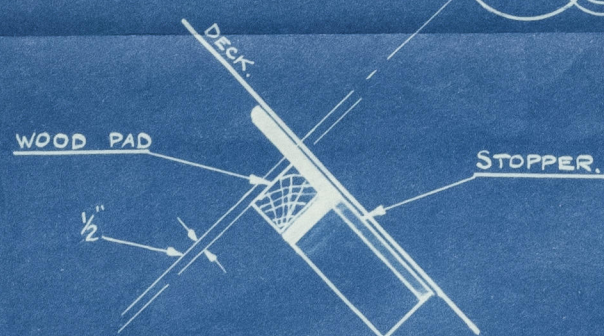
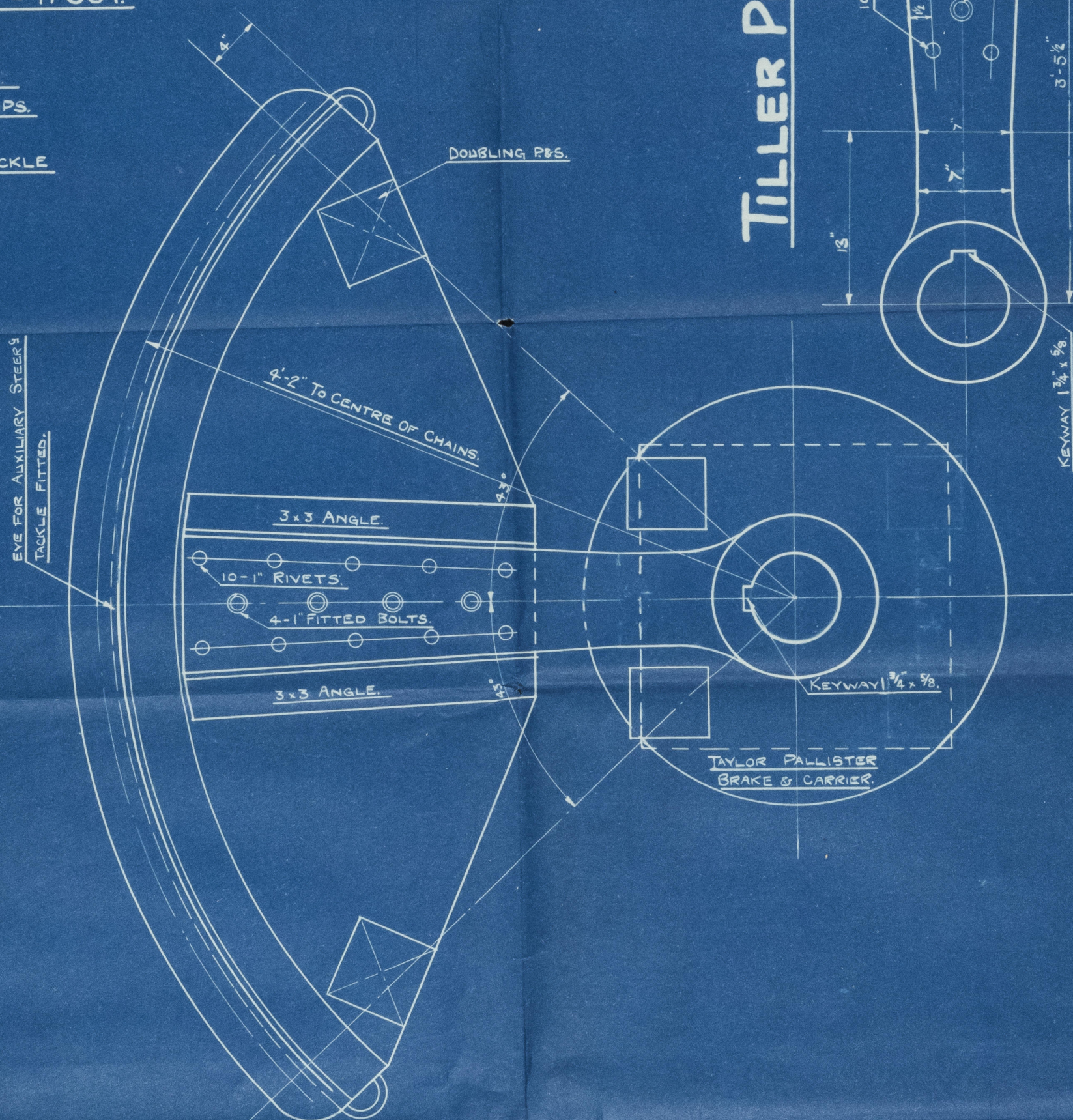
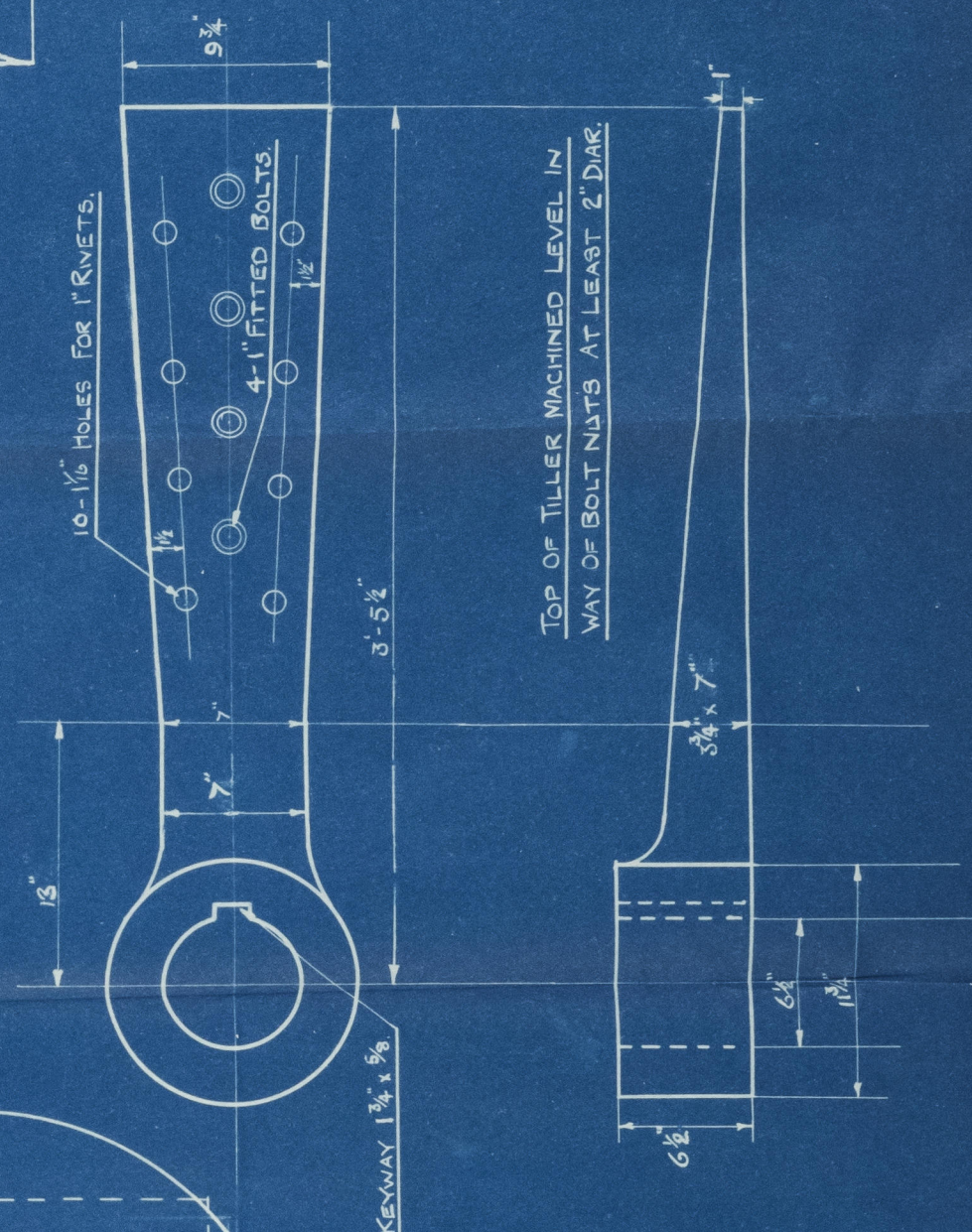
COMBINED HAND & STM. STEER^g ENGINE
FITTED ON NAVIGATING BRIDGE AMIDSHIPS.

8" DOUBLE IRON BLOCKS WITH $3\frac{1}{2}"$ MAN. TACKLE
P & S. LED TO AFT. WINCH.



DIA. OF CHAINS 1" (RULE SIZE $1\frac{5}{16}$)
" " ROD 1 1/4" (RULE SIZE $1\frac{1}{16}$)

TILLER PLAN.



SHIP N° 173.

RUDDER QUADRANT.

PLAN N° P. 32.

APPROVED
LLOYDS REGISTER OF SHIPPING
H. Dickerson 6-7-32



Lloyd's Register
Foundation

004230-004237-0104

THE PURTISLAND SEC.
N° 173

RUDDER QUADRANT

LH Rpt N° 18282

s/s "Wandle"



© 2020

Lloyd's Register
Foundation

004230-004237-0104