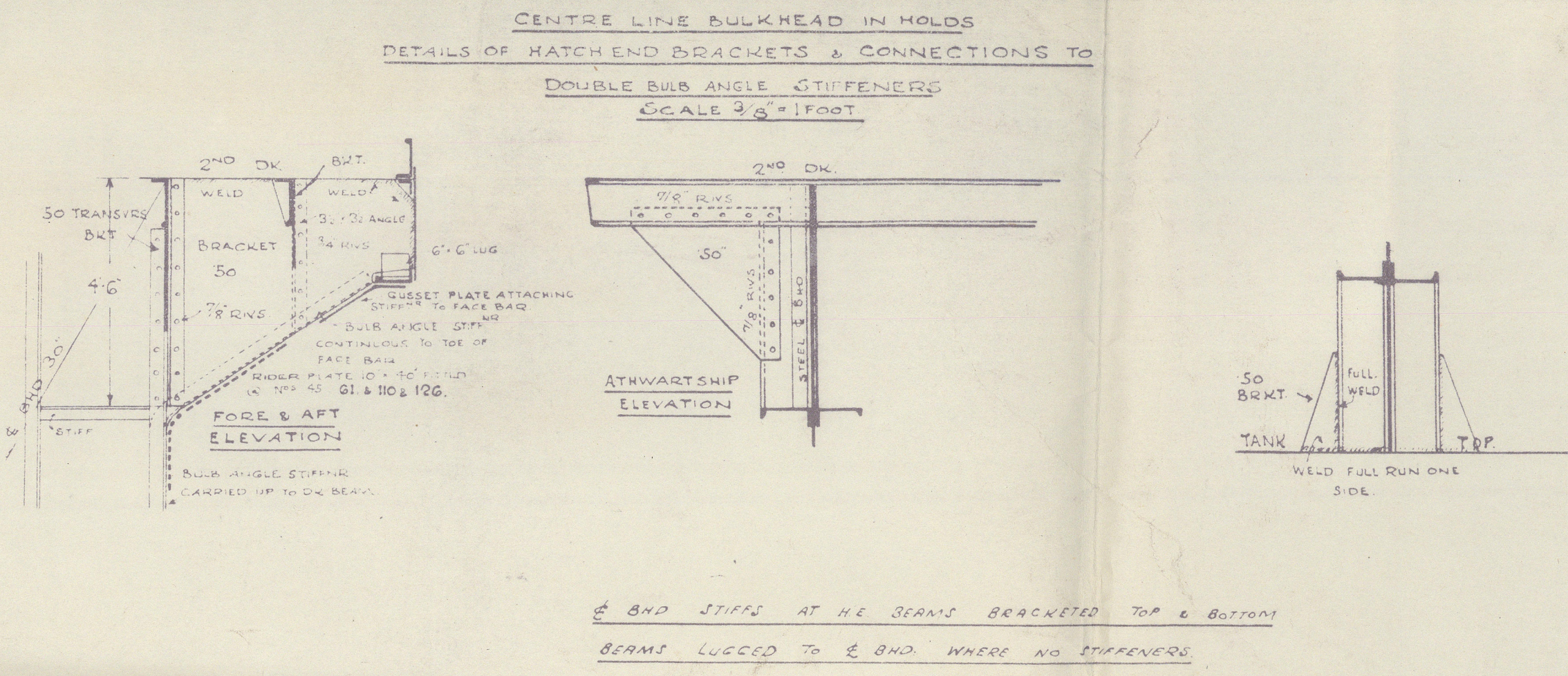


PARTICULARS FOR FREEBOARD	
96' LENGTH INCLUDING CRUISER STERN	308.9'
LENGTH BETWEEN PERPENDICULARS	400.00'
BREADTH MOULDED	53.29'
DEPTH MOULDED TO 2 <sup>ND</sup> DECK	27.38'
85% OF MOULDED DEPTH	23.28'
MOULDED DISPLACEMENT 85% OF M.D. DEPTH	10,640 T
Coeff. of FINENESS	.765
APPROXIMATE TONS PER INCH	49.5
ROUND OF BEAM	12.5
SCANTLING: CLASS 100 A.I. WITH FREEBOARD (SEE NOTE UNDER READING)	
SHEER: AFTER SIDE OF STEEL SHEET = 4.2' SHEEL CURVES	
FORE PERPENDICULAR = 0.0' BROADSIDE	
TWEEN DECKS 8.6' HIGH - STANDARD 7.6'	



# No 523. PROFILE & DECKS PLAN.

DIMENSIONS AS PER RULE.

LENGTH B.P. 400.00'  
BREADTH MLD. 53.29'  
DEPTH MLD. 35.87'

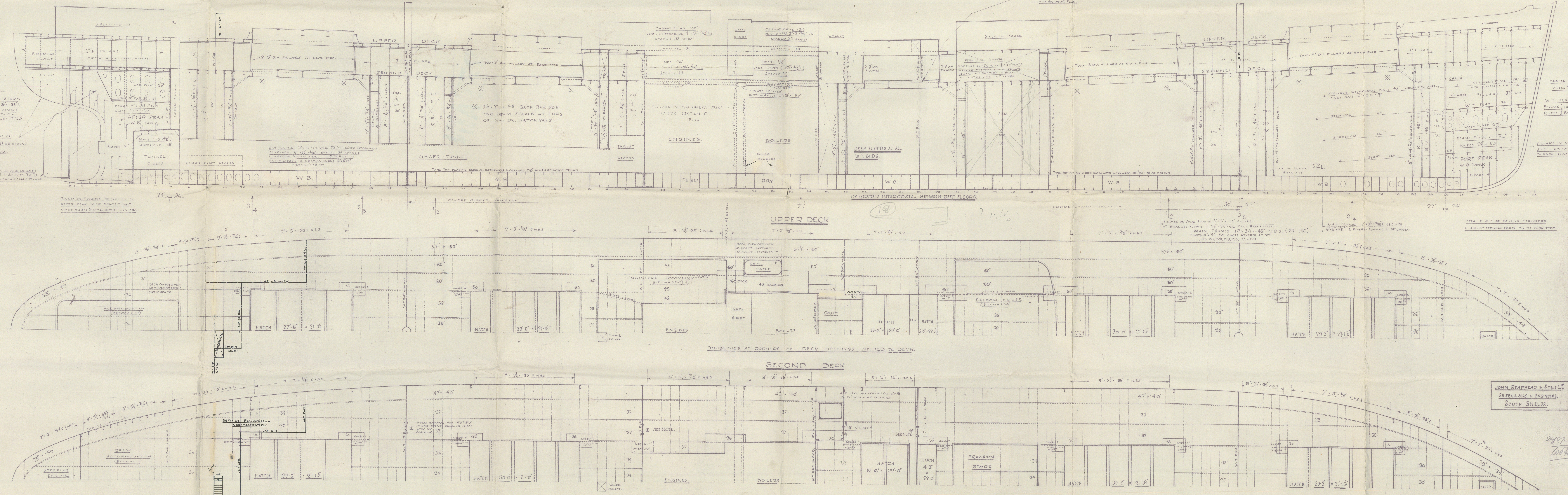
CLASS 100 A.I. WITH FREEBOARD

SCALE 1/8" = 1 FOOT

WITH THE SCANTLING AMENDED SUITABLE FOR A DRAFT OF 18 IN EXCESS OF THAT CORRESPONDING TO THE FREEBOARD WHICH COULD BE AFFORDED TO THE VESSEL WITH A TONNAGE OPENING.

DETAIL OF CONNECTION OF HATCH JOIST GIRDERS & W.T. END TO BE SUBMITTED WITH BULKHEAD PLAN.

MADE WITHOUT, AND ALL STEERING REAR ETC. SUBMITTED TO SUPERIOR DETAILING.



JOHN REAPHEAD & SONS LTD.  
SHIPBUILDERS & ENGINEERS.  
SOUTH SHIELDS.

2/10/14  
W.H.



John Readhead & Son Ltd.  
No 523

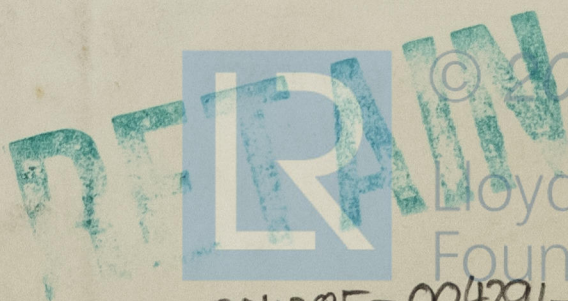
Profile & decks as built

~~WALTER SCOTT~~

<sup>EX</sup>  
Empire Scott.

NEWCASTLE ON TYNE.

Report No. 99755



© 2020

Lloyd's Register  
Foundation

004285-004291-0002