

Nº 697.

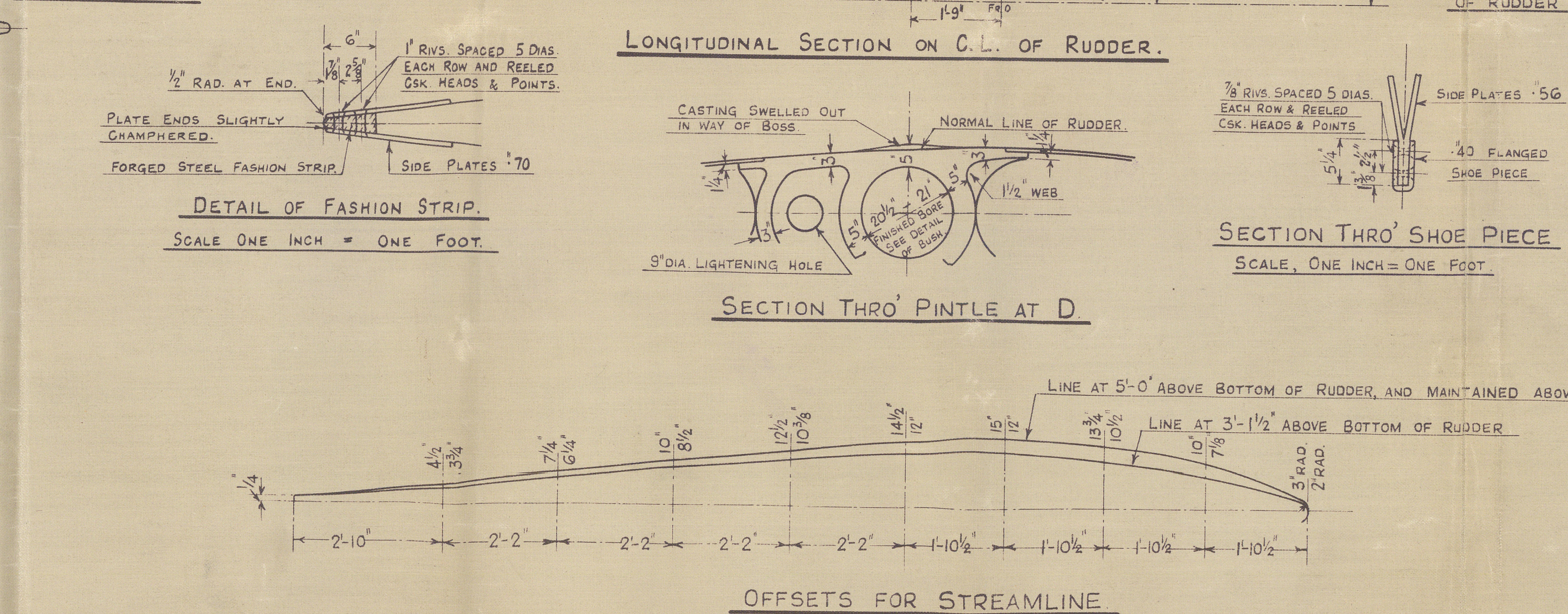
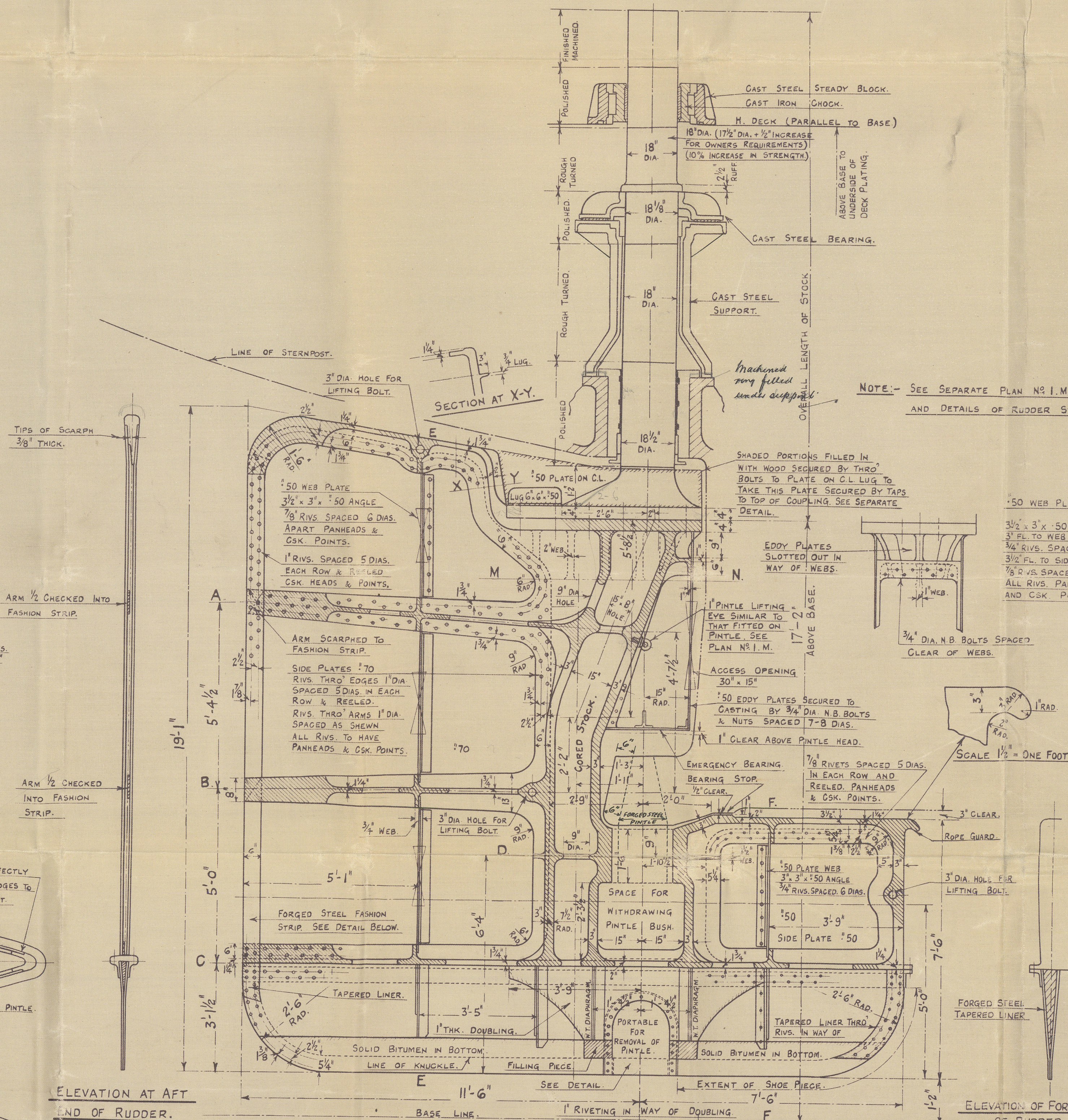
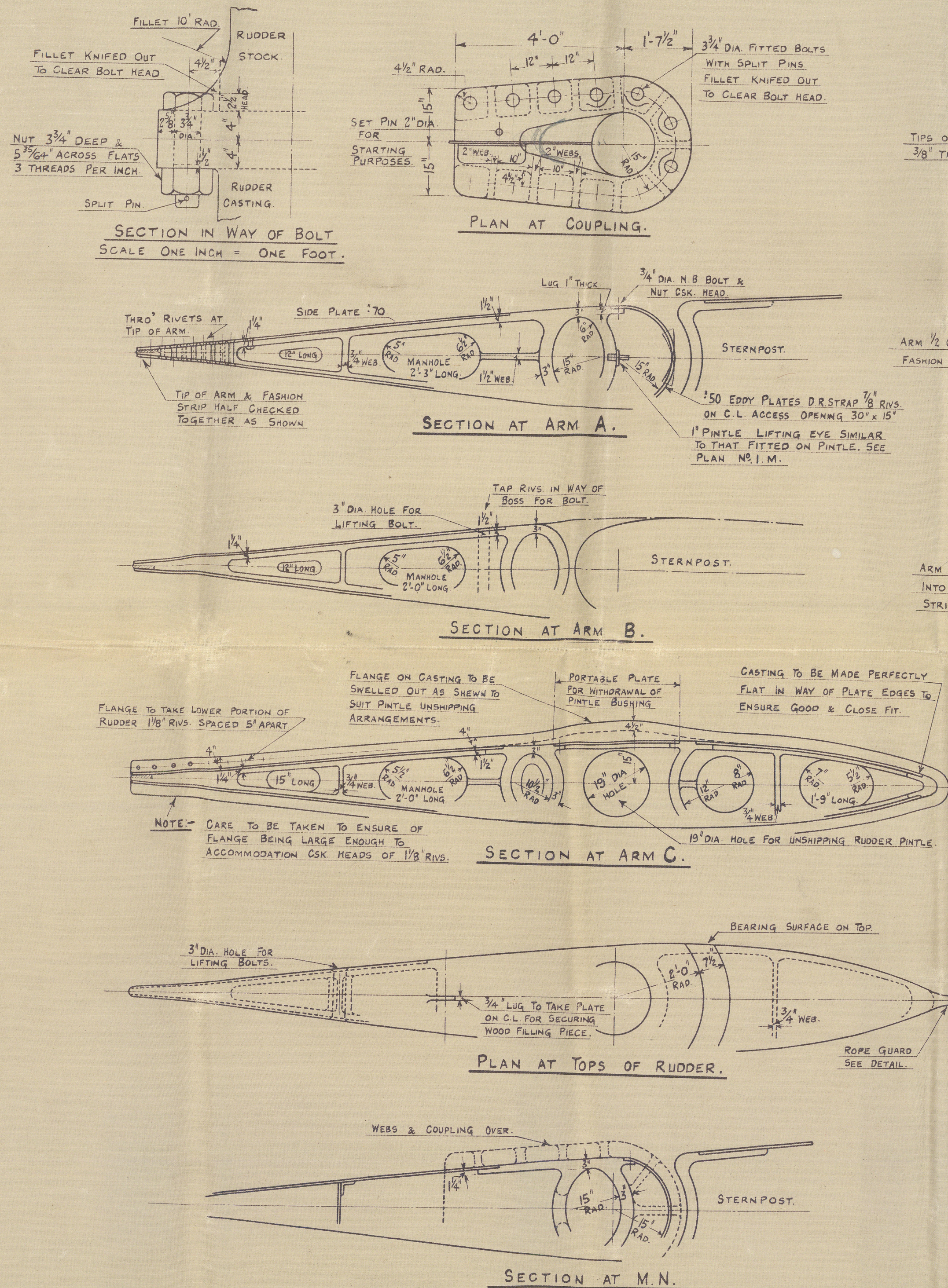
# RUDDER PLAN.

SCALE 1/2 INCH = ONE FOOT.

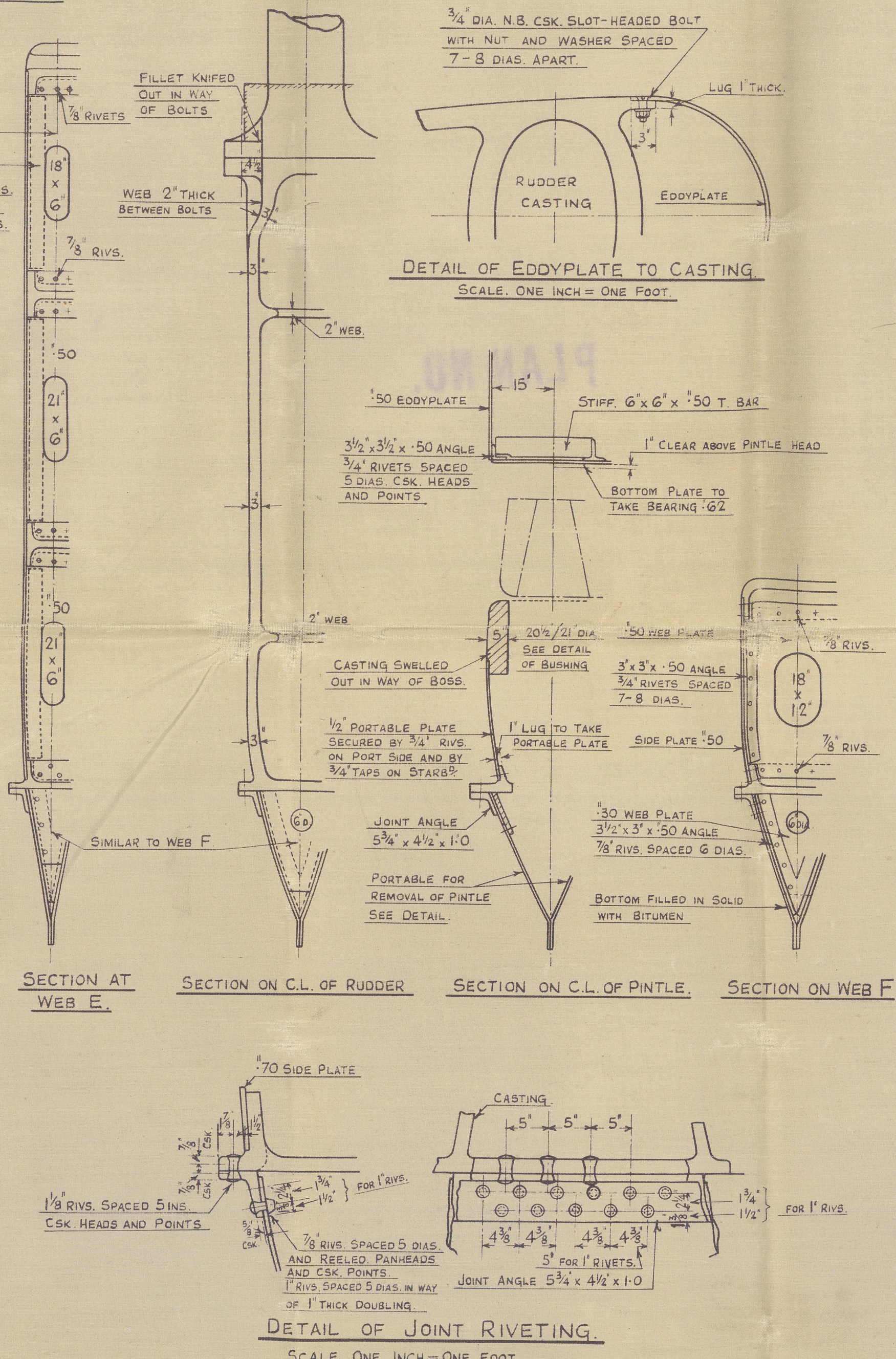
RUDDER CASTING OF STEEL TO LLOYDS & BOARD OF TRADE TESTS & REQUIREMENTS.  
 RUDDER STOCK OF FORGED STEEL TO LLOYDS & BOARD OF TRADE TESTS & REQUIREMENTS.  
 AREA OF RUDDER 260 SQ. FT.  
 SEA SPEED = 20 KNOTS. MAXIMUM TRIAL SPEED = 21 KNOTS.

## NOTES -

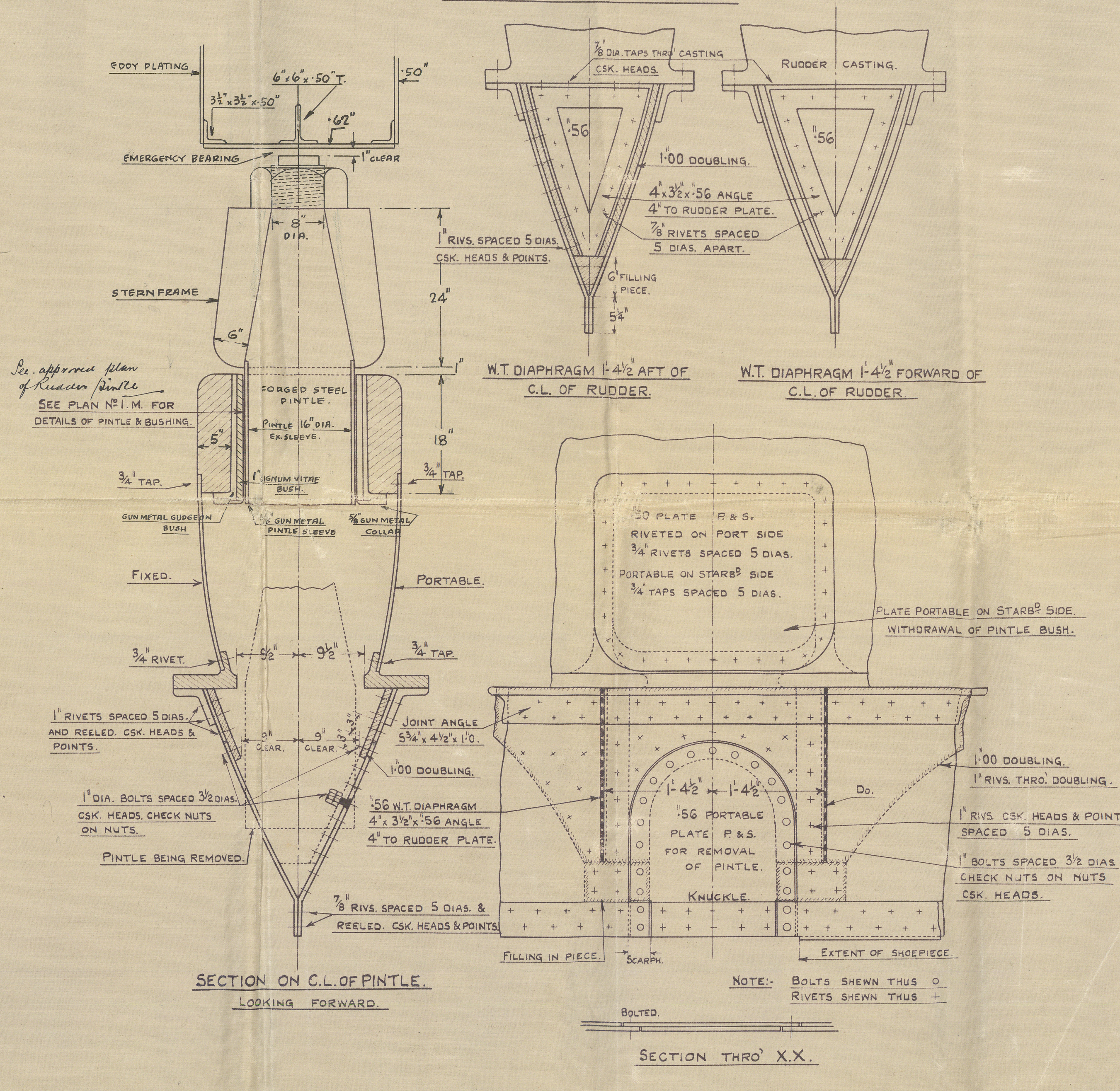
- 1 POSITION & NUMBER OF TEST PIECES TO LLOYDS & BOARD OF TRADE SURVEYORS SATISFACTION.
- 2 INTERIOR OF BOTH PORTIONS OF RUDDER TO BE WELL COATED WITH BITUMEN, THE BOTTOM BEING FILLED IN SOLID AS SHOWN.
- 3 TAPERED LINERS TO BE FITTED IN LOWER PORTION OF RUDDER WHERE THERE IS INSUFFICIENT ROOM TO PASS RIVETS & THROUGH RIVETS FITTED.



NOTE - SEE SEPARATE PLAN N° 1 M. FOR ARRANGEMENT AND DETAILS OF RUDDER STOCK BEARINGS.



## DETAILS OF PORTABLE PLATES FOR REMOVAL OF PINTLE AND PINTLE BUSHING.



PLAN N° 23.

9. 2. 34

00285-004291-0056



Vickers Armstrongs

36 / 694 ~~112~~

Rudder

T.S.S. "Orion" - Barrow J.E. Rpt No 2576

M/M.4286

PLAN NO. 



© 2020

Lloyd's Register  
Foundation

004285-004291-0056