

S.S. MAHADEVI.
S.S. MALIKA.

DIMENSIONS.

NUMERALS.			
1 ST LONGITUDINAL NUMBER	$L \times D =$	909×31.25	$= 18665$
2 ND " " "	$L \times (B+D) =$	$909 \times (53.75 + 31.25)$	$= 33240$
PROPORTION $\frac{1}{2}$ TO UPPER DECK		909×31.25	$= 12.93$
" " $\frac{1}{2}$ TO BRIDGE "		909×39.0	$= 10.36$
D MOULDED DEPTH			$= 31.25$
d = $31.25 - (10.0 + 3.58)$	FORWARD		$= 17.67$
d = $31.25 - (10.0 + 4.33)$	AFT		$= 16.92$
d AT HALF LENGTH FORWARD			$= 20.0$
EJECTIONS			$= 97.0\%$

EQUIPMENT NUMERALS		
HULL		= 34340
POOP	90.85 X 7.75 X 7.5	= 231
BRIDGE	119.75 X 7.75 X 7.5	= 696
FORECASTLE	34.17 X 7.5 X 7.5	= 192
BRIDGE	508HOUSE 62.0 X 7.75 X 7.5	= 360
"	DECKHOUSE & CASING 38 X 7.5 X 50	= 147
TOTAL		= 3539.6

EQUIPMENT			
2	BOULES ANCHORED EACH	6334 CWTs	STOCKLESS
1	STEAM ANCHOR	1712	EX - STOCK
225	FATHOMS 2 1/2	STUD LINK CHAIN CABLE	5682 CWTs
30	"	1 1/2 STEAM CHAIN OR	434 FLEXIBLE STEEL WIRE 6" X 12
120	"	5 FLEXIBLE STEEL WIRE TOWLINE	6" X 12
2	HANDERS	30 FATHOMS 8 HEMP OR	234 FLEXIBLE STEEL WIRE 6" X 12
2	WABERS	30	" 7" " 2 1/2

ERECTING NOTE

KNETS IN FRAMED TO FLOORS AND CROSS-TIE PLATES IN AFT PEAK SPACED 5 DIA APART CR TO CR

KNETS IN FRAMED TO SHELL AT FLAT OF DOUBLE BOTTOM, FORWARD OF 1/2 L FORWARD SPACED 5 1/2 DIA CR TO CR TWO COMPLETE ROWS

KNETS IN FRAMED TO FLOORS AT FLAT OF DOUBLE BOTTOM, FORWARD OF 1/2 L FORWARD SPACED 5 1/2 DIA CR TO CR TWO COMPLETE ROWS

KNETS IN SIDE FRAMED TO SHELL PLATING SPACED 7 DIA APART 5 1/2 DIA IN WAY OF PEELS AND DEEP FRAMING FORWARD BALLAST TANKS.

KNETS IN BOTTOM FRAMED TO SHELL AFT OF 1/2 L FORWARD SPACED 7 DIA APART CR TO CR

KNETS IN 3R BUTTS OF OUTSIDE PLATING AND 3R BUTTS OF DECK STRINGER PLATES SPACED 3/2 DIA APART CR TO CR

KNETS IN 4R BUTTS OF OUTSIDE PLATING AND 4R BUTTS OF DECK STRINGER PLATES SPACED 4 DIA APART CR TO CR

KNETS IN SEAMS OF SHELL PLATING, DECK PLATING AND INNER BOTTOM PLATING AS PER TABLE 30.

KNETS IN BUTTS OF DECK PLATING, INNER BOTTOM AND MARGIN PLATES SPACED 4 DIA APART CR TO CR

KNETS IN SEAMS AND BUTTS OF BULKHEAD AND TUNNEL PLATING, MARGIN ANGLES AND WEATHER DECK STRINGER

KNETS IN SEAMS AND BUTTS OF BULKHEAD AND TUNNEL PLATING, MARGIN ANGLES AND WEATHER DECK STRINGER

ANGLES AND BULKHEAD FRAMES TO BULKHEAD SPACED 3/2 DIA APART CR TO CR 1/4 DIA. IN DEEP TANK BHD'S.

KNETS IN FLAT KEEL ANGLES, VERTICAL ANGLES CONNECTING FLOORS TO CENTRE GIRDERS AND SHELL FLANGE OF

WATERTIGHT BULKHEAD FRAMES SPACED 5 DIA APART CR TO CR

KNETS IN FRAMED TO FLOORS AFT OF 1/2 L FORWARD REVERSE FRAMES TO FLOORS AND INNER BOTTOM PLATING.

VERTICAL ANGLES TO FLOORS AND SIDE GIRDERS IN BULKHEAD STIFFENERS (EXCEPT BULK BULKHEADS)

AND IN DECK PLATING TO BEAMS ON EVERY FRAME SPACED 7 DIA APART CR TO CR

KNETS IN DECK PLATING TO BEAMS AT ALTERNATE FRAMES IN PEAK TRNK BULKHEAD STIFFENERS

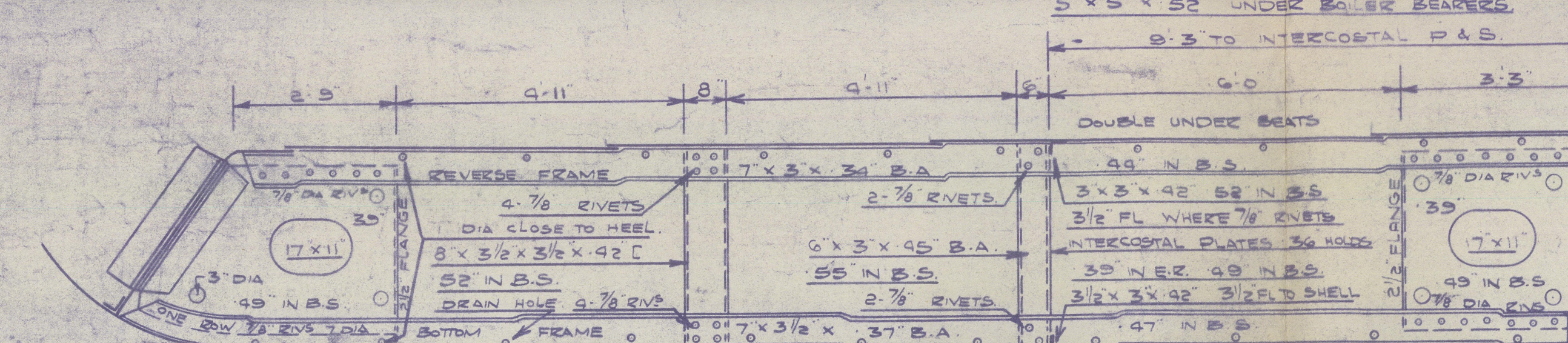
SPACED 6 DIA APART CR TO CR

KNETS IN CENTRE GIRDERS TOP ANGLES SPACED 7 DIA APART CR TO CR NON - WATERTIGHT

KNETS IN CENTRE GIRDERS TOP ANGLES SPACED 5 DIA APART CR TO CR WATERTIGHT.

SCANTLINGS AND DETAILS OF CONSTRUCTION NOTED HEREON ARE SUBMITTED ON THE UNDERSTANDING THAT THEY ARE THE MINIMUM WHICH WILL BE ACCEPTED FOR CLASS AND IF NOT THEY ARE TO BE AMENDED ERRORS AND OMISSIONS EXCEPTED

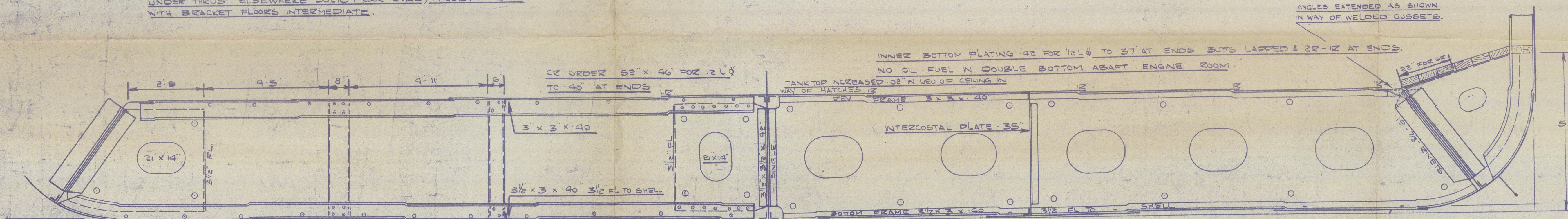
ALL B.A. AND CHANNEL SECTIONS GIVEN HEREON ARE N.B.S.



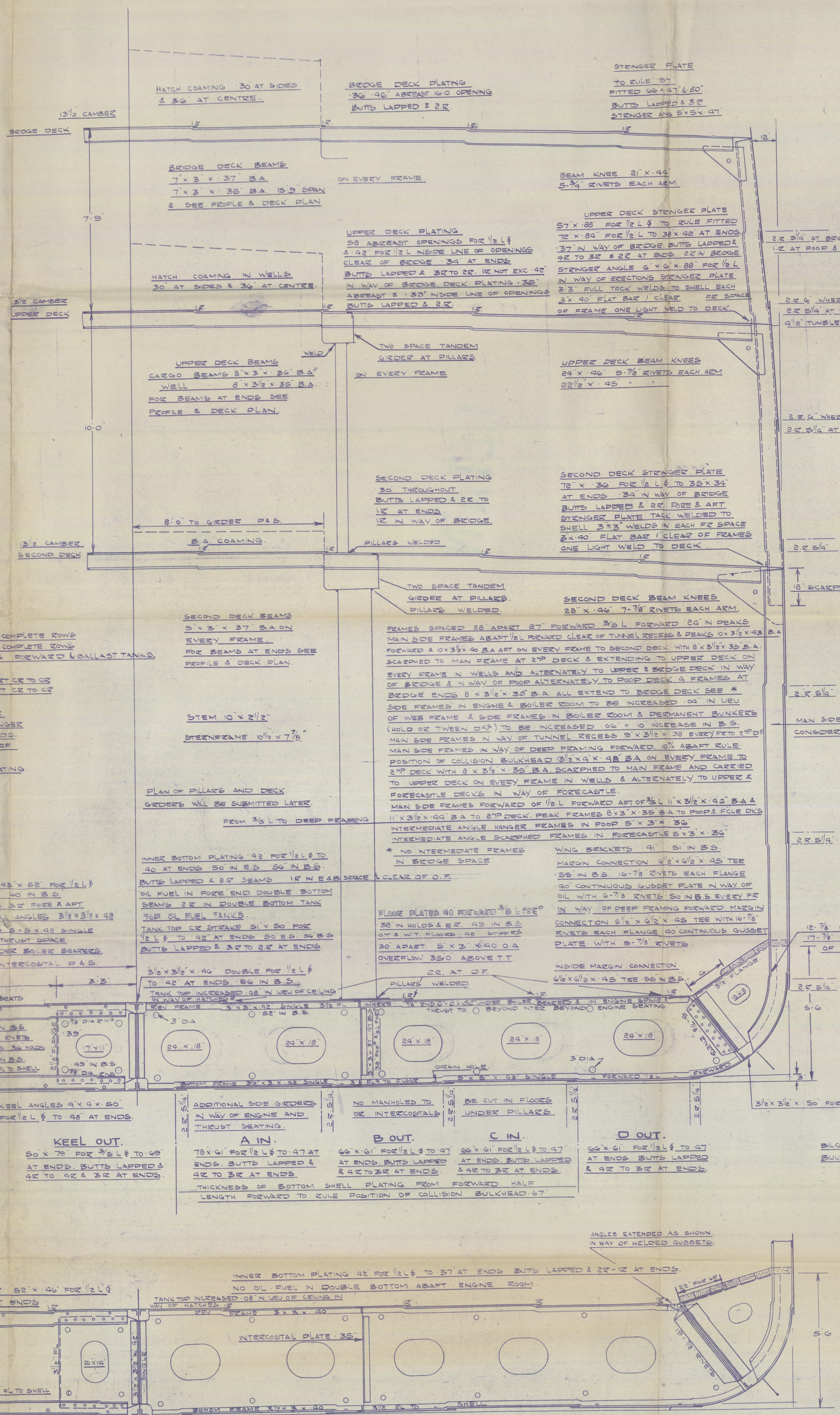
PLAN OF BOTTOM STRENGTHENING
FORWARD WILL BE SUBMITTED LATER

NOTE - DEPTH OF DOUBLE BOTTOM FROM AFT END OF ENGINE ROOM TO FORE END AS SHOWN ABOVE
SEE PROFILE AND DECK PLAN.

DISPOSITION OF FLOORS. SOLID FLOOR ON EVERY FRAME
UNDER ENGINE SPACE AND FORWARD 3/5 LEN FORWARD UNDER
BOILER BEARERS, W.T. BULKHEADS AND PILLARS, PARTIAL SOLID
UNDER THRUST ELSEWHERE SOLID FLOOR EVERY FOURTH FRAME
WITH BRACKET FLOORS INTERMEDIATE.



DOUBLE BOTTOM AFT OF ENGINE ROOM
FOR DETAILS NOT GIVEN SEE OTHER SECTION.



FORECASTLE DECK
STRINGER PLATE 3S x 3A
BUTTS LAPPED & 1R.
PLATING .34" UNSHEATHED
BUTTS LAPPED & 1R.
STRINGER ANGLE 3 1/2 x 3 1/2 x 3A

POOP DECK
STRINGER PLATE 3/8" x 3/4"
BUTTS LAPPED & 1/2"
PLATING 3/4" UNSHEATHED
BUTTS LAPPED 4 1/2"
STRINGER ANGLE 3 1/2" x 3 1/2" x 3/4"

M OUT.
59" AT BRIDGE. 38" AT POOP
41" AT FORECASTLE
BUTTS LAPPED & 3R IN BRIDGE
12 AT POOP & FORECASTLE.

L IN.
.59" AT BRIDGE .38" AT POOP
.41" AT FORECASTLE
BUTTS LAPPED & 3/4" IN BRIDGE
1/2" AT POOP & FORECASTLE.

K OUT.
50" FOR 1/2 L & TO RULE
FITTED 65 x 86 FOR 1/2 L TO .95 AT ENDS
61" IN WAY OF BRIDGE
BUTTS LAPPED & SR FOR 1/2 L TO GR &
3R AT ENDS 3R IN WAY OF BRIDGE
STRENGTHENING AT BREAKS AS PER RULE

J IN.

30' FOR 1/2 L & TO RULE
FITTED 66 X .72 FOR 1/2 L TO .95' AT ENDS
61' IN WAY OF BRIDGE
BUTTS LAPPED & 4R TO 4R & 3R AT ENDS
NOT EXCEEDING .68"
3/4" IN WAY OF BRIDGE.

H OUT
78" x 61" FOR 1/2 L Ø TO .45" AT ENDS
BUTTS LAPPED & 3R FORE & AFT

WITH 2ND DECK. G IN.
78" X 61" FOR 1/2 L \$ TO 45" AT ENDS
BUTTS LAPPED & 3/4" FORE & AFT.

F OUT.
78" x 61" FOR 1/2 L & TO .45" AT ENDS
BUTTS LAPPED & 3R FORE & AFT.

G FOR 6-7/8" ZNETS IN GUSSET	22
G FOR 9-7/8" " " "	32

E IN.
78" x 61" FOR 1/2 L & TO 47
AT ENDS. BUTTS LAPPED
3.R AT ENDS.
WELDED AMIDSHIPS.

FT. MARGIN PLATE TO RULE 34" X 50"
FITTED ABOUT 40" X 50" 58" IN B.S
BUTS LAPPED & 32 FORE & AFT

BULGE KEEL ABOUT 160 FEET LONG OF 12" x $\frac{10}{20}$ "
BULB PLATE, WELDED TO SHELL.


MARGIN PLATE 51" x 50"
BUTS LAPPED & 3R
TANK GUSSET PLATE 40"
EVERY FRAME 6-7/8" RIVETS

MARGIN CONNECTION $6\frac{1}{2}'' \times 6\frac{1}{2}'' \times 95''$ TEE
WITH 20 $\frac{7}{8}''$ BOLTS EACH FLANGE.

MIDSHIP SECTION, AS FITTED.

LITHGOWS' LTD'S YARD N^os 984 & 987.

984.

S. S. "MAHADEVI" 

GRK FIRST ENTRY REPORT N^o 22432.

987.

S. S. "MALIKA"

GRK FIRST ENTRY REPORT N^o

2

RETAIN

004308-004315-0109



© 2020

Lloyd's Register
Foundation