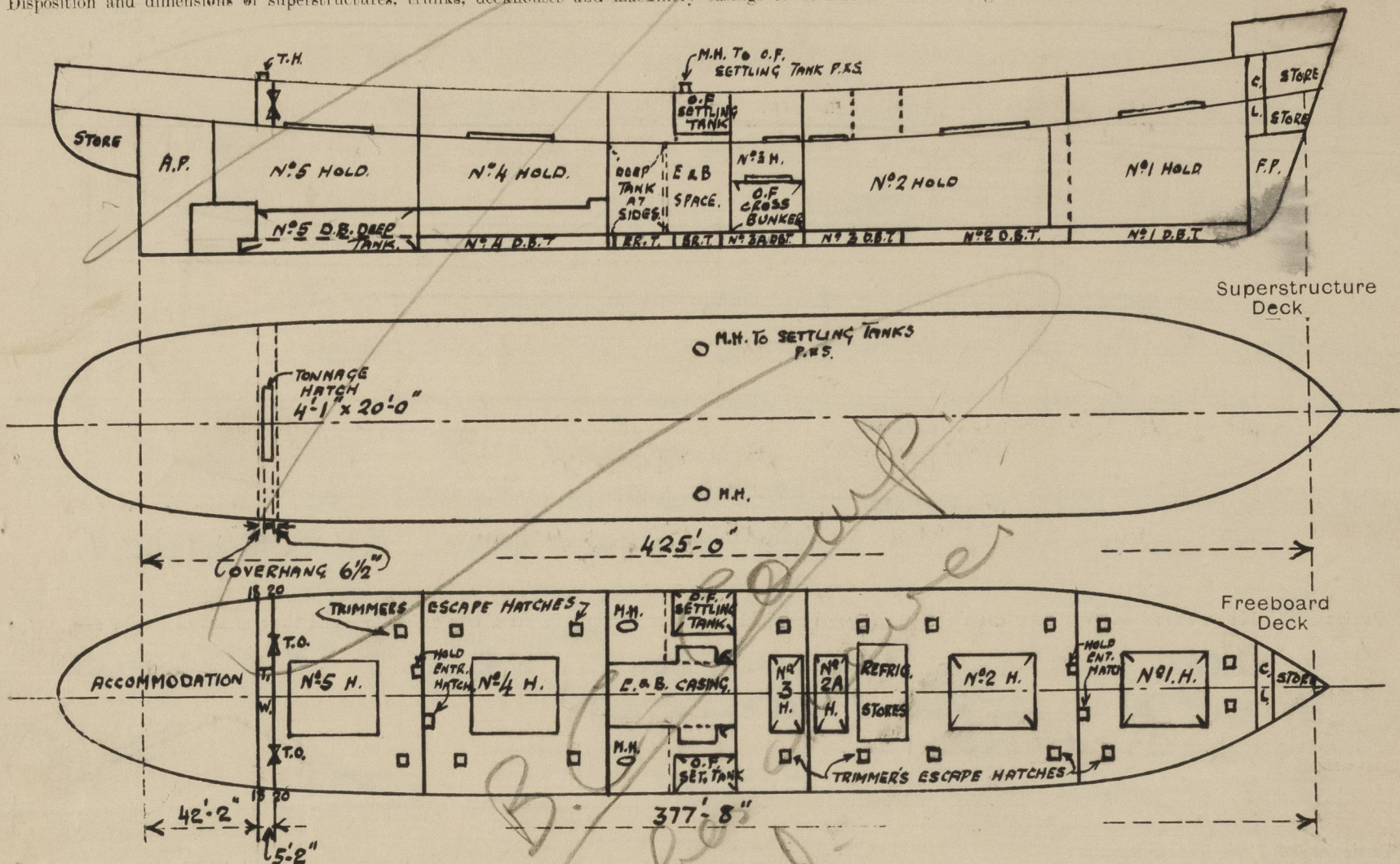


Lloyd's Register of Shipping.
SURVEYS FOR FREEBOARD.
(CONDITIONS OF ASSIGNMENT.)

Ship's Name "ARGOS HILL" Port of Survey LIVERPOOL
Official Number 168743 Surveyor's Signature J. B. Tilly
Nationality and Port of Registry BRITISH GLASGOW Date of Survey JUNE 1949

Disposition and dimensions of superstructures, trunks, deckhouses and machinery casings to be inserted in the diagrams and tabular statement :-



Particulars of Superstructures, Trunks, Casings, Deckhouses.								
	Coaming	Plating	Stiffeners	Spacing	End Attachments of Stiffeners	Size of Openings	Height of Sills	Height of Casings
Poop Bulkhead ...	✓	25"	4" x 3" x 3/8" OA to 6" x 3" x 1/8" BA	28" to 34"	LUGGED TOP AND BOTTOM	✓	✓	9'-0"
Raised Quarter Deck Bulkhead ...	✓	5/16"	5" x 3" x 3/8" OA to 6" x 3" x 1/8" BA	27 1/2" to 30"	WELDED TO DECK TOP & BOTTOM	2 @ 4'-1" x 3'-1"	12"	9'-0"
Bridge, After Bulkhead ...	✓							
Bridge, Forward Bulkhead ...	✓							
Forecastle Bulkhead ...								
Trunk, Aft ...								
Trunk, Forward ...								
Exposed Machinery Casings on Freeboard or Raised Quarter Decks ...								
Exposed Machinery Casings on Superstructure Decks ...								
Machinery Casings within Superstructures not fitted with Class I Closing Appliances ...	VERT. PLATING.	30"	4" FLANGE	31"	✓	2 @ 5'-0" x 24"	18"	9'-0"
Deckhouses on Flush Deck Ships ...								
Particulars of Closing Appliances (state if capable of being manipulated from both sides).								
Poop Bulkhead ...	No OPENING.							
Raised Quarter Deck Bulkhead ...	✓							
Bridge, After Bulkhead ...	WEATHERBOARDS FULL HEIGHT IN CHANNELS WELDED TO BULKHEAD.							
Bridge, Forward Bulkhead ...								
Forecastle Bulkhead ...								
Exposed Machinery Casings on Freeboard or Raised Quarter Decks ...								
Exposed Machinery Casings on Superstructure Decks ...								
Machinery Casings within Superstructures not fitted with Class I Closing Appliances ...	HINGED STEEL DOORS. MANIPULATED FROM BOTH SIDES.							
Deckhouses on Flush Deck Ships ...								

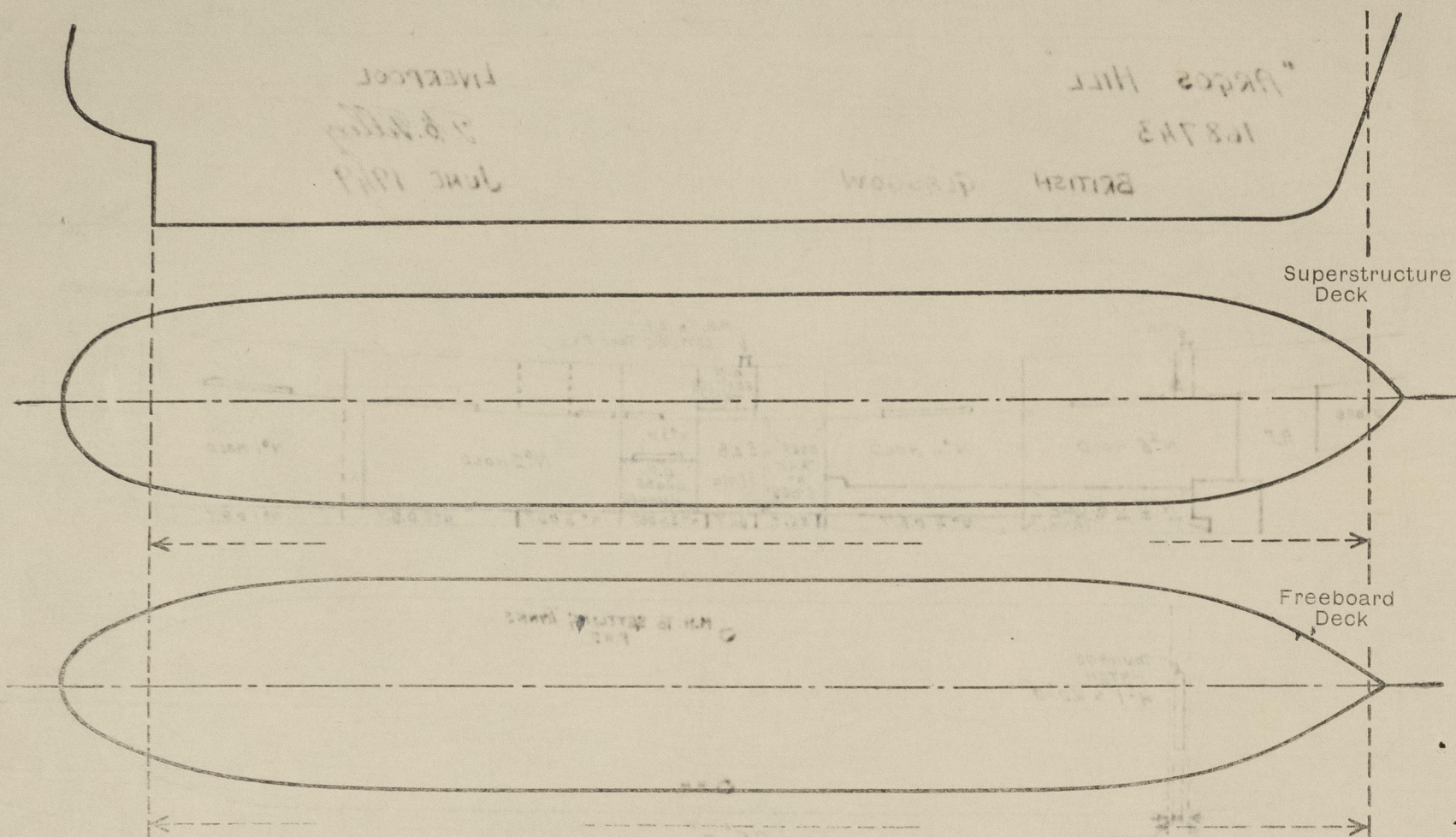


© 2021

Lloyd's Register Foundation

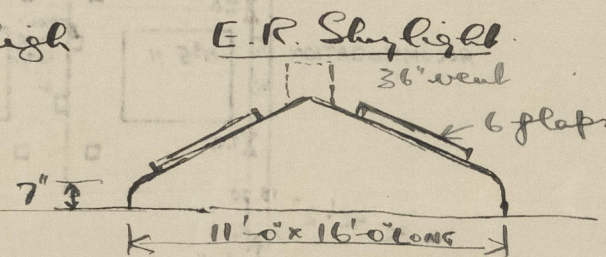
PARTICULARS OF PROTECTION TO OPENINGS, ETC.

The following diagrams should be used to indicate the positions of cargo and coaling hatchways, gangway, cargo and coaling ports, ventilators, companionways, etc., which would affect the seaworthiness of the ship:—



Particulars of filley, funnel and ventilator coamings, engine-room skylight and other openings in machinery casing tops and their means of closing:—

- 3 Liddley gratings. Steel plate covers 3' high
- 4 - 24" to Engine Room (Tall coaming)
- 2 - 30" to stowehold " "



Particulars of Flush Bunker Scuttles:—

have

Particulars of Companionways:—

have

Particulars of Ventilators in exposed positions on freeboard and superstructure decks:—

Vents have 3'-0" coamings welded direct to deck with wood plugs + canvas covers for closing arrangements.

- 1 - 10" } Off accommodation.
- 5 - 9" }
- 10 - 8" }
- 5 - 6" }
- 2 - 10" to tween decks amidships
- 2 - 18" to Holds
- 4 - 15" to Refrig Store " (F)
- 2 - 10" to Cabin Store " (S)

- 7 - 18" to Holds aft
- 1 - 18" aft end of bridge.
- 2 - 24" Derrick posts amidships
- 6 - 18" to Holds forward
- 2 - 18" to Holds, on forecastle.

Particulars of Air Pipes in exposed positions on freeboard, raised quarter, or superstructure decks:—

D.B. Oil Fuel Tanks
After Peak. D.B. Feed tank + Fresh Water Tanks - 2'-6" to openings fitted with double gauge, hinged steel flaps.
Fore Peak, Water Ballast Tank (Deep) + Remainder of Double Bottom tanks - 2'-6" to opening, fitted with wood plugs + canvas covers.

Particulars of Gangway Cargo and Coaling Ports :—

Particulars of Scuppers and Sanitary Discharge Pipes :—

2 P + 1 S at 4" Discharge from W.C. Aft accommodation
2 P + 2 S " 2 1/2" " " " " " "
2 P + 1 S " 2" " " " " " "
1 P + 1 S " 5" W.C. Engineer + P.O.s Aft midship accommodation
1 P + 1 S " 4" W.C. Capt + Officers bridge " "
4 P + 3 S " 2 1/2" Bath + washbasins " " "
2 P + 2 S " 2" Sinks + scuppers " " " "

Made of brass with clacks.

Particulars of Side Scuttles :—

10" sidelight of brass with M.C. 1 dead light (Permanent)

Vertical distance of Sill of lowest Side Scuttle above top of keel

3' 6" below 1st deck

Particulars of Guard Rails :—

3 Rail stanchions about 4' 6" apart 3' 6" high
on Shelter + Forecastle decks.

Particulars of Gangways, Lifelines, etc. :—

chase.

Particulars of Freeing Arrangements.						
	Length of Bulwark	Height of Bulwark	Size of Freeing Ports	Number each side	Area each side	Rule area each side
After Well		Open rails				
Forward Well						
State position of each freeing port { After Well :— (F. and A. position and height above deck edge) { Forward Well :—						
State whether the freeing ports are fitted with shutters, bars, or rails, and give particulars of such :—						
Additional area where sheer is less than standard.						

PARTICULARS OF PROTECTION TO OPENINGS, ETC.

HATCHWAYS ON FREEBOARD AND SUPERSTRUCTURE DECKS.											
FREEBOARD DECK							4 OFF	18 OFF	2 OFF	2 SUPERSTRUCTURE OFF	DECK
Description of Hatchway	Nº1 CARGO	Nº2 CARGO	Nº2A CARGO	Nº3 CARGO	Nº4 CARGO	Nº5 CARGO	HOLD ENTRANCE HATCHES	TRIMMERS ESCAPE HATCHES	MANHOLES FOR DEEP TANKS	MANHOLES FOR SETT. TANKS	TONNAGE HATCH
Dimensions of Hatchway	31'-6" x 20'-0"	31'-0" x 20'-0"	12'-11" x 20'-0"	12'-11" x 20'-0"	31'-0" x 20'-0"	31'-0" x 20'-0"	2'-3" x 2'-3"	2'-0" x 2'-6"	18" 12"	20" DIA.	4'-1" x 20'-0"
COAMINGS	9" x 3" B.A.	9" x 3" B.A.	9" x 3" B.A.	9" x 3" B.A.	9" x 3" B.A.	9" x 3" B.A.	9" x 3" B.A.	9" x 3" B.A.	✓	18"	10" B.P.
Height above Deck	40"	40"	40"	40"	40"	40"	40"	40"	✓	40"	7/16"
Thickness	✓	✓	✓	✓	✓	✓	✓	✓	✓	✓	✓
Stiffeners	✓	✓	✓	✓	✓	✓	✓	✓	✓	✓	✓
Brackets, Stays	✓	✓	✓	✓	✓	✓	✓	✓	✓	✓	✓
HATCH BEAMS	5 5'-3" ✓	5 5'-2" ✓	1 6'-5 1/2" ✓	1 6'-5 1/2" ✓	5 5'-2" ✓	5 5'-2" ✓	✓	✓	✓	✓	✓
Number	A. 19" x 40"	A. 19" x 40"	A. 22" x 40"	A. 22" x 40"	A. 19" x 40"	A. 19" x 40"	✓	✓	✓	✓	✓
Spacing	B. 10" x 45"	B. 10" x 45"	B. 10" x 45"	B. 10" x 45"	B. 10" x 45"	B. 10" x 45"	✓	✓	✓	✓	✓
Scantling and Sketch	10" x 3"	10" x 3"	10" x 3"	10" x 3"	10" x 3"	10" x 3"	✓	✓	✓	✓	✓
Bearing Surface	10" x 3"	10" x 3"	10" x 3"	10" x 3"	10" x 3"	10" x 3"	✓	✓	✓	✓	✓
FORE AND AFTERS	12 U.E. 117.51 ACTUAL 105.50	12 U.E. 132 ACTUAL 130									
Number											
Spacing											
Unsupported Lengths											
Scantling* and Sketch											
Bearing Surface											
HATCH COVERS	WOOD 2 1/2" F.R.A. ✓	WOOD 2 1/2" F.R.A. ✓	WOOD 3" F.R.A. ✓	WOOD 3" F.R.A. ✓	WOOD 2 1/2" F.R.A. ✓	WOOD 2 1/2" F.R.A. ✓	WOOD 2 1/2" ATHWART ✓	WOOD 2 1/2" ATHWART ✓	W.T. STEEL 7/16" 3/4"	W.T. STEEL 1/2" 3/4"	WOOD 2 1/2" F.R.A. ✓
Material	3"	3"	3"	3"	3"	3"	2 3/8"	2 3/8"	BOLTS	BOLTS	2"
Thickness											
How fitted											
Bearing Surface											
Spacing of Cleats	24 ✓	24 ✓	24 ✓	24 ✓	24 ✓	24 ✓	15 ✓	18 ✓	SPACED 14 DIA.	SPACED 14 DIA.	✓
Number of Tarpaulins	1	1 ✓	1	1	1	1	1 ✓	1	APART	APART	✓

*Are wood fore and afters steel shod at all bearing surfaces? ✓

Are battens and wedges efficient and in good condition? YES

Are tarpaulins in good condition and in accordance with rule requirements? YES

Are lashings provided in accordance with rule requirements? ✓

Permanently

Particulars of any special features :—

Permanently
closed by welded plate
See Liverpool Rpt 8.
No 129211

PARTICULARS OF PROTECTION TO OPENINGS, ETC.

HATCHWAYS ON FREEBOARD AND SUPERSTRUCTURE DECKS.										
Description of Hatchway				N ^o 1	N ^o 2	N ^o 3A	N ^o 3	N ^o 4	N ^o 5.	
Dimensions of Hatchway				31'0" x 20'0"	31'0" x 20'0"	12'11" x 20'0"	12'11" x 20'0"	31'0" x 20'0"	31'0" x 20'0"	
COAMINGS	{	Height above Deck	30"	30"	30"	30"	30"	30"	
		Thickness {	Sides ...	44	44	44	44	44	44	
			Ends	
			Stiffeners	
			Brackets, Stays	
				2 10" x 3 1/2" x 7/16" BA. 7" x 3" x 3/8" BA at ends. End + sides 3 1/2" x 3 1/2" x 7/16"						
HATCH BEAMS	{	Number	5	5	2	2	5	5	
		Spacing	5'-2"	5'-2"	4'-3 3/4"	4'-3 3/4"	5'-2"	5'-2"	
		Scantling and Sketch							
		Bearing Surface	3"	3"	3"	3"	3"	3"	
						10" x 42" flat.				
FORE AND AFTERS	{	Number							
		Spacing							
		Unsupported Lengths							
		Scantling* and Sketch							
		Bearing Surface							
HATCH COVERS	{	Material	2 1/2" W.P.						
		Thickness	2 1/2"						
		How fitted	F1A						
		Bearing Surface	3"						
Spacing of Cleats				24"						
Number of Tarpaulins				2						

*Are wood fore and afters steel shod at all bearing surfaces ?

Are battens and wedges efficient and in good condition ?

Are tarpaulins in good condition and in accordance with rule requirements ?

Are lashings provided in accordance with rule requirements ?

© 2021

Lloyd's Register

Particulars of any special features :—

Information from old B.C. Rpt.