

SHIP NOS 11689 - 11699

STEAM CARGO VESSEL MODIFIED Y TYPE

COMBINATION CANTILEVER ARRANGEMENT

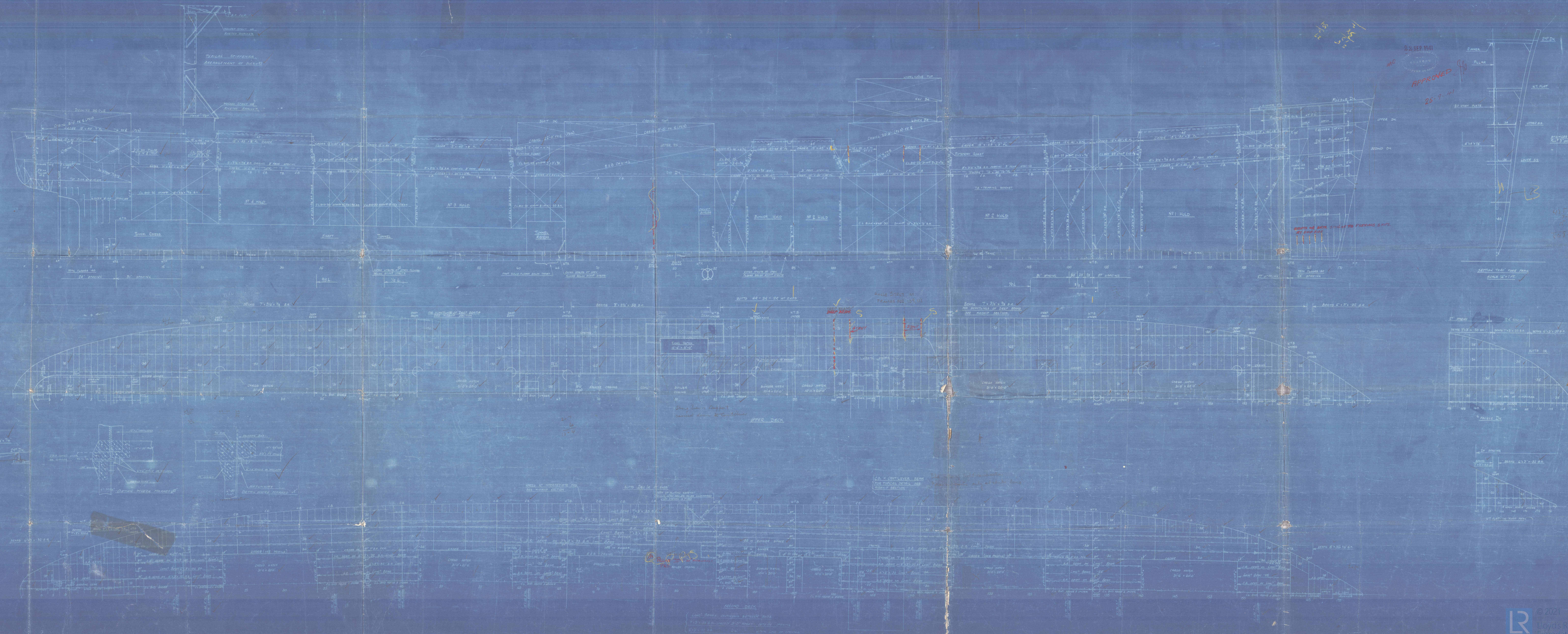
PROFILE & DECKS.

SCALE 1/8"=1 FT

TO CLASS BS\* WITH FREEBOARD

DIMS 425' O'B.P. ON LWL x 56' O'MLD x 27'9" MLD TO 2ND DK x 36'10" MLD TO UPPER DK.

THE SCANTLING OF ANGLES & BARS ANGLES GIVEN ARE 1/4" x 3/8" THICKNESS OF PLATING HAS BEEN MODIFIED TO SUIT AMERICAN STEEL





H

And. Profile & Deck.

Harland & Wolff Ltd

N<sup>os</sup> 11685-95. x 12835.

25.9.41

Argea Hill \* T.C. 1.9.43.

EMPIRE TORRENT

" " NERISSA <sup>EX</sup> 'DAYDAWN'

<sup>EX</sup> Rock  
Son

\* SKOTIA \* <sup>EX</sup> KRALJEVICA

25/9/41

Rec. Office copy

11685-95. 24 W. Ltd.

2021



Lloyd's Register  
Foundation

004358-004363-0048





© 2021

Lloyd's Register  
Foundation

0098



White Birch

004358-004363-0098

Sx h 6/6  
3/4/16

9.29  
4.48  
4.25  
- 4.25  
1

004358-004363-0098



© 2021  
Lloyd's Register  
Foundation