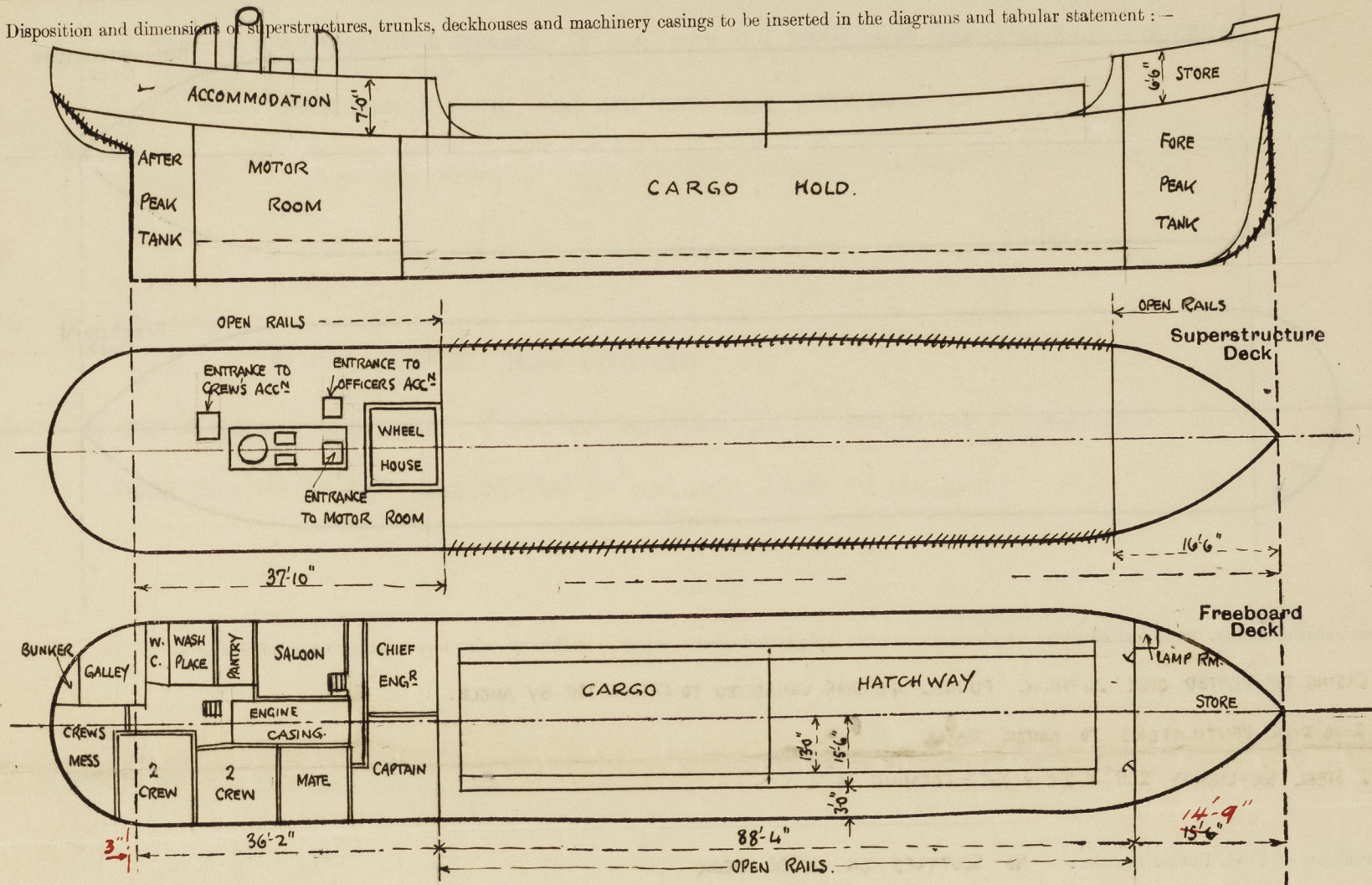


Lloyd's Register of Shipping.
SURVEYS FOR FREEBOARD.
(CONDITIONS OF ASSIGNMENT.)

19 MAY 1943

Ship's Name "EMPIRE RANCHER". Port of Survey HULL.
Official Number 169278 Surveyor's Signature J. Macleod
Nationality and Port of Registry BRITISH - HULL. Date of Survey DURING CONSTRUCTION.

Disposition and dimensions of superstructures, trunks, deckhouses and machinery casings to be inserted in the diagrams and tabular statement :-



Particulars of Superstructures, Trunks, Casings, Deckhouses.

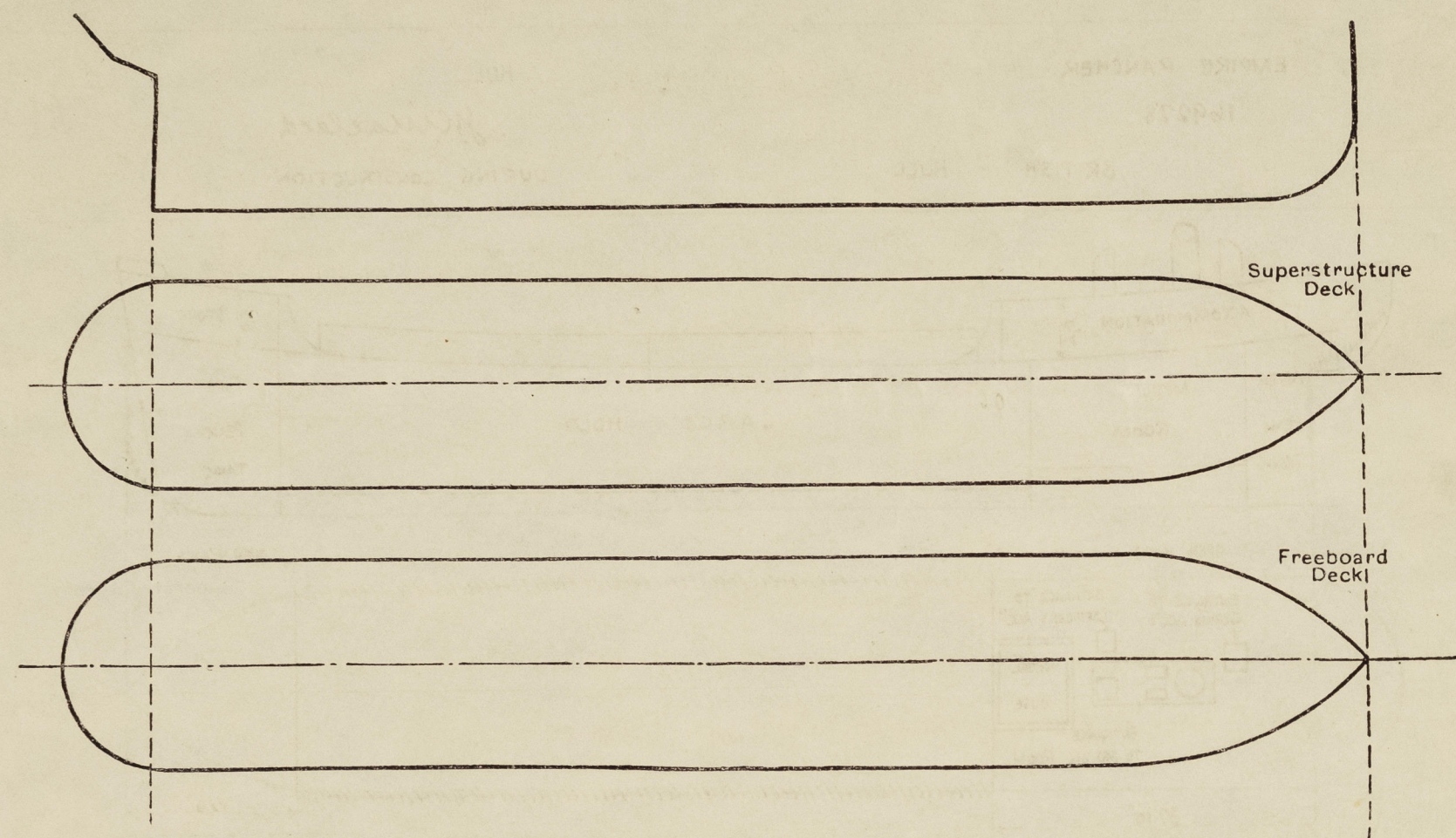
	Coaming	Plating	Stiffeners	Spacing	End Attachments of Stiffeners	Size of Openings	Height of Sills	Height of Casings
Poop Bulkhead	✓	30 ✓	5½" x 3" x 30 ✓	30" ✓	BKTS T. & BTM.	NONE ✓	✓	7'-0" ✓
Raised Quarter Deck Bulkhead ...	✓							
Bridge, After Bulkhead	✓							
Bridge, Forward Bulkhead	✓							
Forecastle Bulkhead	✓	20 ✓	2½" x 2½" x 26 ✓	30" ✓	NONE ✓	4'6" x 2'-0" ✓	18" ✓	6'-6" ✓
Trunk, Aft	✓							
Trunk, Forward	✓							
Exposed Machinery Casings on Freeboard or Raised Quarter Decks ...	✓							
Exposed Machinery Casings on Superstructure Decks	✓							
Machinery Casings within Superstructures not fitted with Class I Closing Appliances	✓							
Deckhouses on Flush Deck Ships ...	✓							

Particulars of Closing Appliances (state if capable of being manipulated from both sides).

Poop Bulkhead	NONE ✓
Raised Quarter Deck Bulkhead ...	✓
Bridge, After Bulkhead	✓
Bridge, Forward Bulkhead	✓
Forecastle Bulkhead	ONE HINGED STEEL DOOR (P. & S) FITTED WITH SPRING LOCK & OPERATED ON BOTH SIDES. ✓
Exposed Machinery Casings on Freeboard or Raised Quarter Decks ...	✓
Exposed Machinery Casings on Superstructure Decks	✓
Machinery Casings within Superstructures not fitted with Class I Closing Appliances	✓
Deckhouses on Flush Deck Ships ...	✓

PARTICULARS OF PROTECTION TO OPENINGS, ETC.

The following diagrams should be used to indicate the positions of cargo and coaling hatchways, gangway, cargo and coaling ports, ventilators, companionways, etc., which would affect the seaworthiness of the ship:—



Particulars of fiddley, funnel and ventilator coamings, engine room skylight and other openings in machinery casing tops and their means of closing:—

CASING TOP PLATED OVER 24 THICK. FUNNEL 4'0" DIAR. CONNECTED TO CASING TOP BY ANGLE.
2-10" DIAR. VENTILATORS TO MOTOR ROOM.
2 STEEL SKYLIGHTS 2'9" x 2'0" x 1/4" - COAMING 18".

Particulars of Flush Bunker Scuttles:— NO SCUTTLES ON UPPER DECK

1 FLUSH BUNKER SCUTTLE ON POOP DECK 16" DIAR. WITH BAYONET JOINT AND CHAIN ATTACHMENT.

Particulars of Companionways:—

POOP DECK. TO MOTOR ROOM, OFFICERS QUARTERS & CREW'S ACCOMMODATION, 3 IN NUMBER. 6'0" HIGH x 2'6" x 2'6".
PLATING .25; SILLS 18" HIGH. ENTRANCE BY WOOD DOORS OPERATED FROM BOTH SIDES.

Particulars of Ventilators in exposed positions on freeboard and superstructure decks:—

UPPER DECK. AT POOP FRONT BULKHEAD - 1 VENTILATOR (STBD SIDE) 13" DIAR. - COAMING 2'6" x 5/16" THICK.
AT FORE END MAIN HATCHWAY - 1 " (PORT SIDE) " " " " " " "
POOP DECK. 6" DIAR. COWL VENTILATOR (P. & S) TO PASSAGES - COAMING 2'6" x 3/16" THK.
6 MUSHROOM VENTILATORS (PORT) & 5 ON STBD SIDE - 6" DIAR.
COWL VENTILATORS SUPPLIED WITH WOOD PLUGS & CANVAS COVERS.

Particulars of Air Pipes in exposed positions on freeboard, raised quarter, or superstructure decks:—

FORECASTLE DECK. AIR PIPE TO FORE PEAK TANK - 2" DIAR. PROTECTED BY SPIRCKETTING PLATES.
POOP DECK " " " AFTER " " - 2" DIAR.
AIR PIPES FITTED WITH WOOD PLUG - CHAIN ATTACHMENT.

Particulars of Gangway Cargo and Coaling Ports:—

NONE.

Particulars of Scuppers and Sanitary Discharge Pipes:— UPPER DECK. 4 SCUPPERS (P. & S).

DISCHARGES. FROM W.C (PORT SIDE). 4" DIAR. WITH N.R. STORM VALVE (BRASS) ON SHIP'S SIDE - 1'2" BELOW UPPER DECK TO BOTTOM OF OPENING & CONTROLLED BY ROD ABOVE UPPER DECK.
FROM SINKS, WASH BASINS & SHOWERS. - 2" DIAR. WITH N.R. STORM VALVE (BRASS) ON SHIP'S SIDE (PORT) - 1'2" BELOW UPPER DECK & FITTED WITH STOP COCK ABOVE UPPER DECK.

Particulars of Side Scuttles:—

NO SIDE SCUTTLES BELOW UPPER DECK.

BELOW POOP DECK TO ACCOMMODATION SPACES. 9 SIDE SCUTTLES (P. & S) 10" DIAR. WITH HINGED C.I. DEADLIGHTS.
2 ESCAPE SCUTTLES ON POOP FRONT BULKHEAD 16" DIAR. WITH HINGED C.I. DEADLIGHTS.

Vertical distance of Sill of lowest Side Scuttle above top of keel

Particulars of Guard Rails:—

UPPER DECK. 2 1/2" x 5/8" FLAT BAR STANCHIONS SPACED 6'0" APART & FITTED WITH 3-1/2" S.W.R. SPACED 12" APART.

POOP & FORECASTLE DECKS. 2 1/2" x 5/8" FLAT BAR STANCHIONS WITH 2-1/2" S.W.R. SPACED 18" APART.

Particulars of Gangways, Lifelines, etc.:—

NO GANGWAY.

LIFELINE ON HATCH COAMING SIDE (STBD SIDE) PORTABLE FLAT BAR STANCHIONS 2 1/2" x 5/8" - 3'0" HIGH WITH 1 1/2" F.S.W.R.

Particulars of Freeing Arrangements.						
	Length of Bulwark	Height of Bulwark	Size of Freeing Ports	Number each side	Area each side	Rule area each side
After Well						
Forward Well						
State position of each freeing port { After Well:— (P. and A. position and height above deck edge) { Forward Well:— State whether the freeing ports are fitted with shutters, bars, or rails, and give particulars of such:— Additional area where sheer is less than standard.						

PARTICULARS OF PROTECTION TO OPENINGS, ETC.

HATCHWAYS ON FREEBOARD AND SUPERSTRUCTURE DECKS.									
Description of Hatchway			MAIN HATCHWAY						
Dimensions of Hatchway			80'-0" x 13'-0" x 15'-6"						
COAMINGS	{	Height above Deck	25	✓					
		Thickness { Sides	40	✓					
			Ends	40	✓				
		Stiffeners							
		Brackets, Stays	36	✓					
HATCH BEAMS	{	Number	14 (1 FIXED)	✓					
		Spacing	4'-10" & 5'-5"	✓					
		Scantling and Sketch	I 12"x 32 at CR.	✓					
			7 1/2" " ENDS	✓					
		7"x 50 Top & Bottom Fl.	✓						
		Bearing Surface	3"	✓					
FORE AND AFTERS	{	Number							
		Spacing							
		Unsupported Lengths							
		Scantling* and Sketch	NONE	✓					
		Bearing Surface							
HATCH COVERS	{	Material	WHITE PINE	✓					
		Thickness	2 1/2"	✓					
		How fitted	F. & A.	✓					
		Bearing Surface	3 1/4" & 5" AT HATCH ENDS	✓					
Spacing of Cleats			24"						
Number of Tarpaulins			2						
<p>*Are wood fore and afters steel shod at all bearing surfaces? NONE</p> <p>Are battens and wedges efficient and in good condition? YES</p> <p>Are tarpaulins in good condition and in accordance with rule requirements? YES</p> <p>Are lashings provided in accordance with rule requirements? YES SPECIAL LASHINGS PROVIDED.</p>									

Particulars of any special features :—

ABNORMAL LENGTH OF HATCHWAY. ✓

Endorsement at first survey and at surveys for renewal of Certificate :—

The fittings and appliances are in accordance with the particulars shown on this form (or as now modified) and are in good condition.

