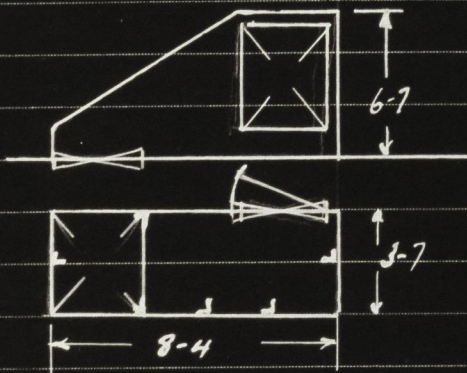


Lloyd's Register of Shipping.

Ship's Name "BELGIAN CAPTAIN" Official No.

Memorandum of alterations reported since ship was surveyed for assignment of Load Lines in

A Steel Companionway $\frac{5}{16}$ thick Suitably Stiffened ^{fitted} on the Upper Deck abreast the main mast on the Starboard side. Opening in Deck 4'-10" x 3'-7".
Steel BA fore & afters fitted to deck in way of cut beams.
Opening in Companionway 4'-10" x 3'-1" Closed with Hinges w.t. 4000 with 10" plates manipulated from both sides. 18" Sill.



R. L. L. L.
4/2/46

Copy forwarded to Bureau to place on board.

Noted
J. B. W.
22/2/46



© 2020

Lloyd's Register
Foundation

Particulars of Gangway Cargo and Coaling Ports:—

None.

Particulars of Scuppers and Sanitary Discharge Pipes:—

Scuppers, washbasin & bath wastes from deckhouses above freeboard deck, lead overboard above 2nd deck without stormvalves at ships side.

Scupper from forecastle space, port side, leads overboard above 2nd deck with M.C.I. stormvalve at ships side.

Scuppers from washplace in tween decks aft, lead overboard above 2nd deck with brass stormvalve at ships side controlled from above freeboard deck.

Soil discharges from deckhouses above freeboard deck, lead overboard above 2nd deck with M.C.I. or brass stormvalves at ships side.

Soil discharge from crews lavatory on 2nd deck aft leads overboard above 2nd deck with brass stormvalve at ships side controlled from above freeboard deck.

Scuppers from 2nd deck clear of crew space aft, lead down into bilges.

Particulars of Side Scuttles:—

Side scuttles with efficient deadlights fitted in tween decks aft.

Vertical distance of Sill of lowest Side Scuttle above top of keel

34'-6"

Particulars of Guard Rails:—

Forecastle deck:— 2 tier rails 3'-3" high with stanchions spaced about 4'-9" apart.

Freeboard deck:— forward of saloon house - 3 tier rails 3'-9" high with stanchions spaced about 5'-0" apart.

abreast saloon house & aft end engineers deckhouse - bulwark 3'-6" high with 3 freeing ports 7'-0" x 9" - 9" above deck edge

aft of engineers deckhouse - 3 tier rails 3'-9" high with stanchions about 5'-0" apart.

Particulars of Gangways, Lifelines, etc.:—

Lifelines fitted.

Particulars of Freeing Arrangements.

	Length of Bulwark	Height of Bulwark	Size of Freeing Ports	Number each side	Area each side	Rule area each side
After Well			Open rails.			
Forward Well			Open rails.			

State position of each freeing port { After Well:—
(F. and A. position and height above deck edge) { Forward Well:—

State whether the freeing ports are fitted with shutters, bars, or rails, and give particulars of such:—

Additional area where sheer is less than standard.



© 2020

Lloyd's Register
Foundation

PARTICULARS OF PROTECTION TO OPENINGS, ETC.

HATCHWAYS ON FREEBOARD AND SUPERSTRUCTURE DECKS.												
Description of Hatchway		FORE PEAK	CHAIN LKR	Nº 1.	Nº 2.	Nº 3.	Nº 4.	Nº 5.	Nº 6.	COAL HATCHES	CASING TOP	ESCAPE FROM GUNNERS' ACCOMM.
Dimensions of Hatchway		4' x 3'	2' 0" x 2' 6"	31' 6" x 20'	31' x 20'	31' x 20'	12' 11" x 20'	31' x 20'	31' x 20'	15' 6" x 5'	5' 2" x 20'	2' 0" DIA
COAMINGS	Height above Deck	9' x 3 1/2"		31"	31"	31"	31"	31"	31"	31"	9' x 3 1/2"	6"
	Thickness	x 40 B.A.		.45	.45	.44	.46	.44	.44	.44	x 40 B.A.	EFFICIENT
HATCH BEAMS	Stiffeners	BULG. ANGLE		7 x 3 x 40	8 x 3 x 44	8 x 3 x 44	7 x 3 x 40	8 x 3 x 44	8 x 3 x 44	7 x 3 x 40	✓	ESCAPE SCUTTLE
	Stays	✓		3	3	3	1	3	3	1		
FORE AND AFTERS	Number			5	5	5	1	5	5			
	Spacing			5' 3"	5' 2"	5' 2"	6' 5 1/2"	5' 2"	5' 2"			
HATCH COVERS	Unsuported Lengths											
	Scantling* and Sketch			10 1/2 x 36	16 3/4 x 36	16 3/4 x 36	10 1/2 x 36	16 3/4 x 36	16 3/4 x 36			
HATCH COVERS	Bearing Surface			3 1/2	3 1/2	3 1/2	3 1/2	3 1/2	3 1/2			
	Material	WOOD	WOOD	WOOD	WOOD	WOOD	WOOD	WOOD	WOOD	WOOD	WOOD	HINGED STEEL W.T.
HATCH COVERS	Thickness	2 1/2	2 1/2	2 1/2	2 1/2	3	2 1/2	2 1/2	2 1/2	2 1/2	2 1/2	ESCAPE SCUTTLE OPERATED FROM BOTH SIDES.
	How fitted	F&A	ATHW.	F&A	F&A	F&A	F&A	F&A	F&A	ATHWAST	F&A	
HATCH COVERS	Bearing Surface	2 1/2	2 1/2	3	3	3	3	3	3	3	2 1/2	
	Spacing of Cleats	24	18	24	24	24	24	24	24	24	24	
Number of Tarpaulins		1	1	2	2	2	2	2	2	2	2	
<p>*Are wood fore and afters steel shod at all bearing surfaces? YES</p> <p>Are battens and wedges efficient and in good condition? YES</p> <p>Are tarpaulins in good condition and in accordance with rule requirements? YES</p> <p>Are lashings provided in accordance with rule requirements? YES (LOCKING BARS FITTED TO HATCHES 1, 2, 3, 4, 5 & 6).</p>												

Particulars of any special features:— Deeper loading endorsement will be required.

The openings in the tween deck bulkheads are closed by riveted steel watertight plates, except those in bulkhead 87 which are closed by hinged steel watertight doors operated from both sides.

Endorsement at first survey and at surveys for renewal of Certificate:—

The fittings and appliances are in accordance with the particulars shown on this form (or as now modified) and are in good condition.



© 2020

Lloyd's Register Foundation