

# Lloyd's Register of Shipping.

Ship's Name "BELGIAN CAPTAIN"

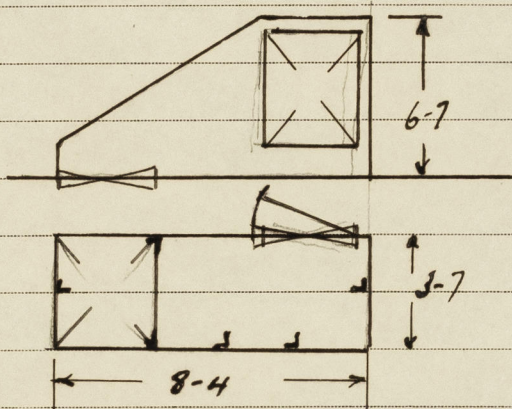
Official No. ....

Memorandum of alterations reported since ship was surveyed for assignment of Load Lines in

A Steel Companionway  $8\frac{1}{2}$  thick Suitably Stiffened <sup>fitted</sup> on the upper Deck abreast the Main mast on the Starboard Side. Opening in Deck 4'-10" x 3'-7".

Steel BA for + afters fitted to deck in way of cut beams.

Opening in Companionway 4'-10" x 3'-1" Closed with Hinges w.t. Door with 10 Cords Manipulated from both Sides. 18" Sill.



*J.R. Lacey*  
4/2/46

Copy forwarded to Bureau to place on board.

*Noted*  
*J.R. Lacey*  
22/2/46



© 2020

Lloyd's Register  
Foundation