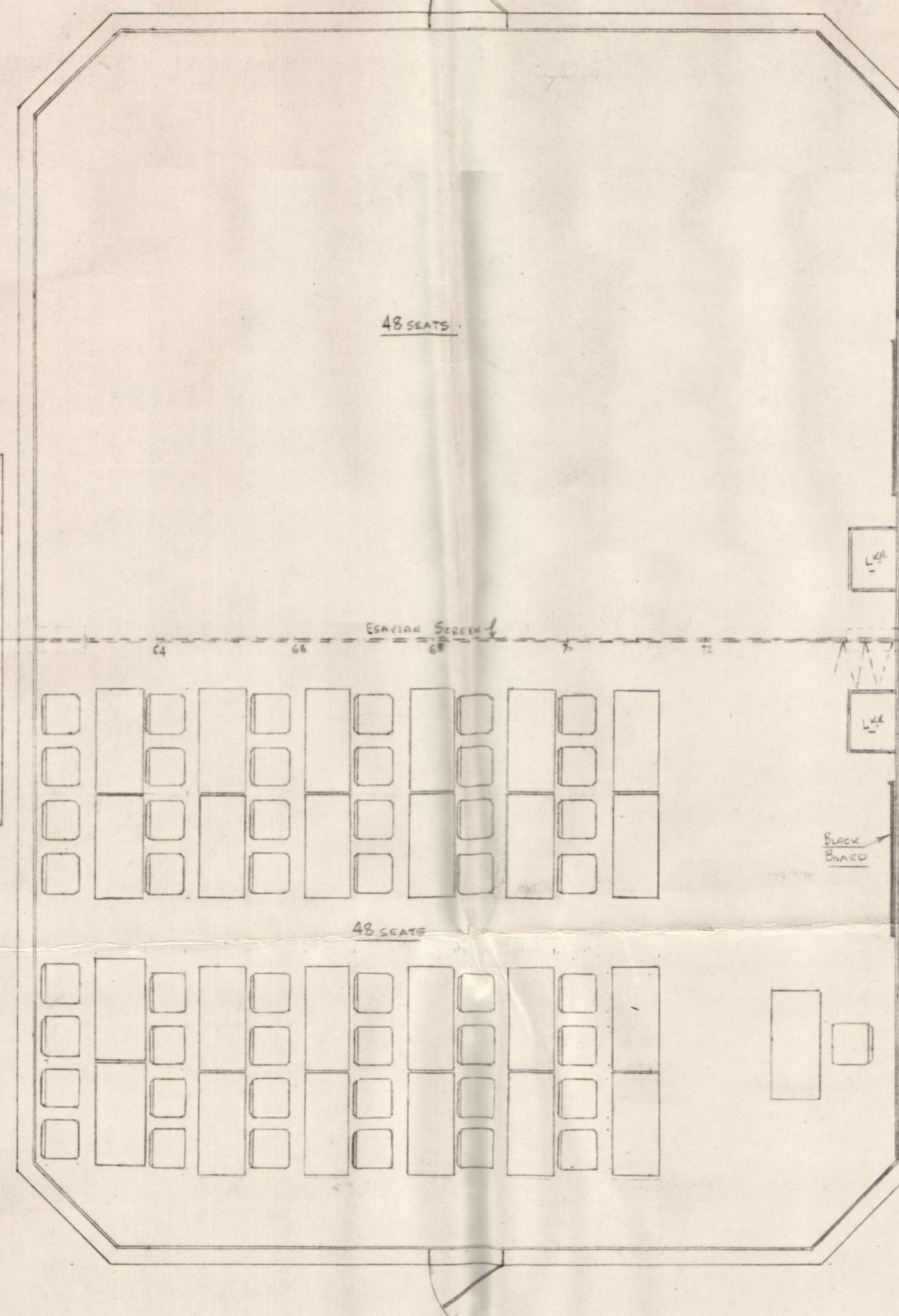
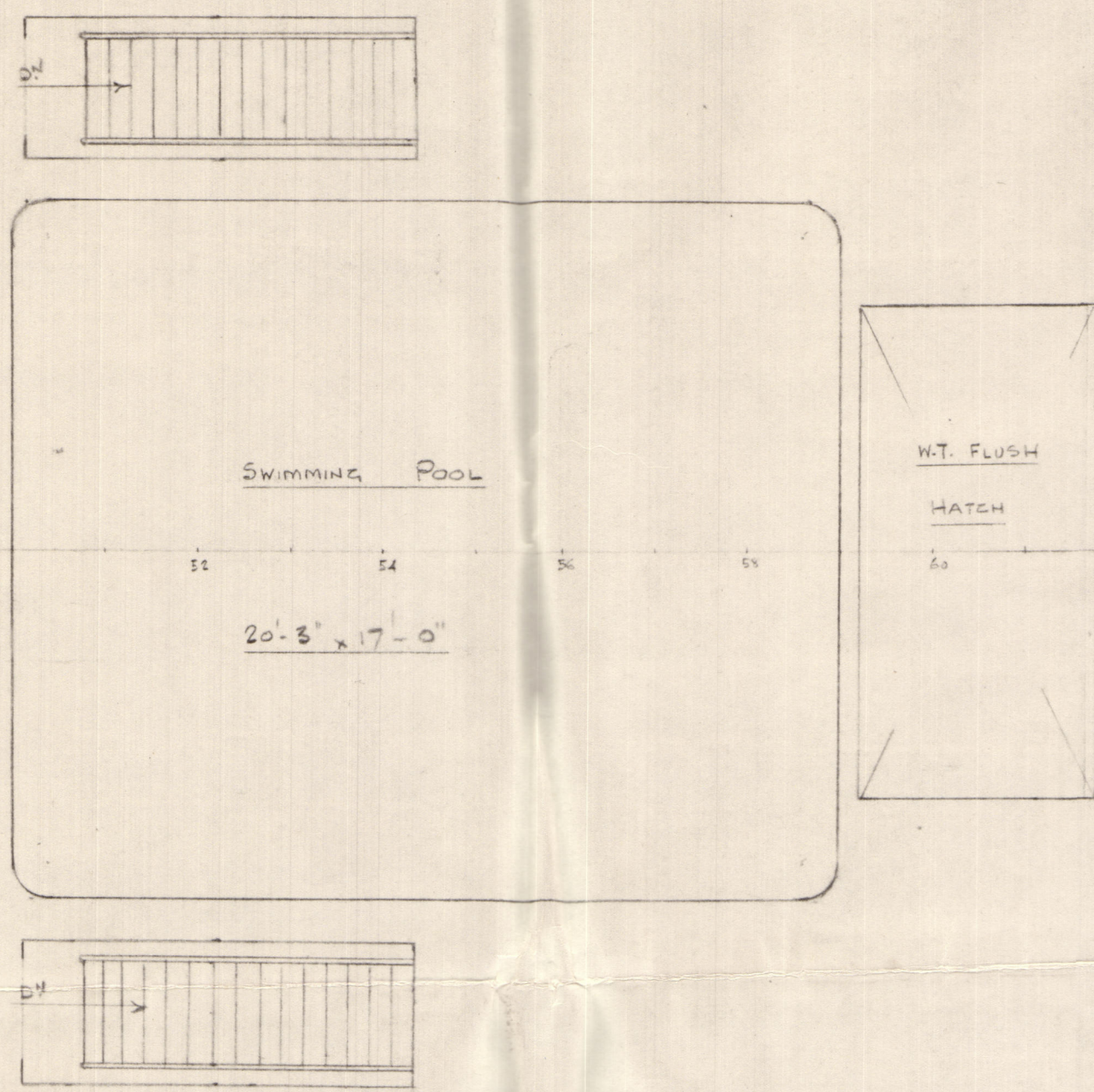


PART PLAN AT
FROM DECK (B')

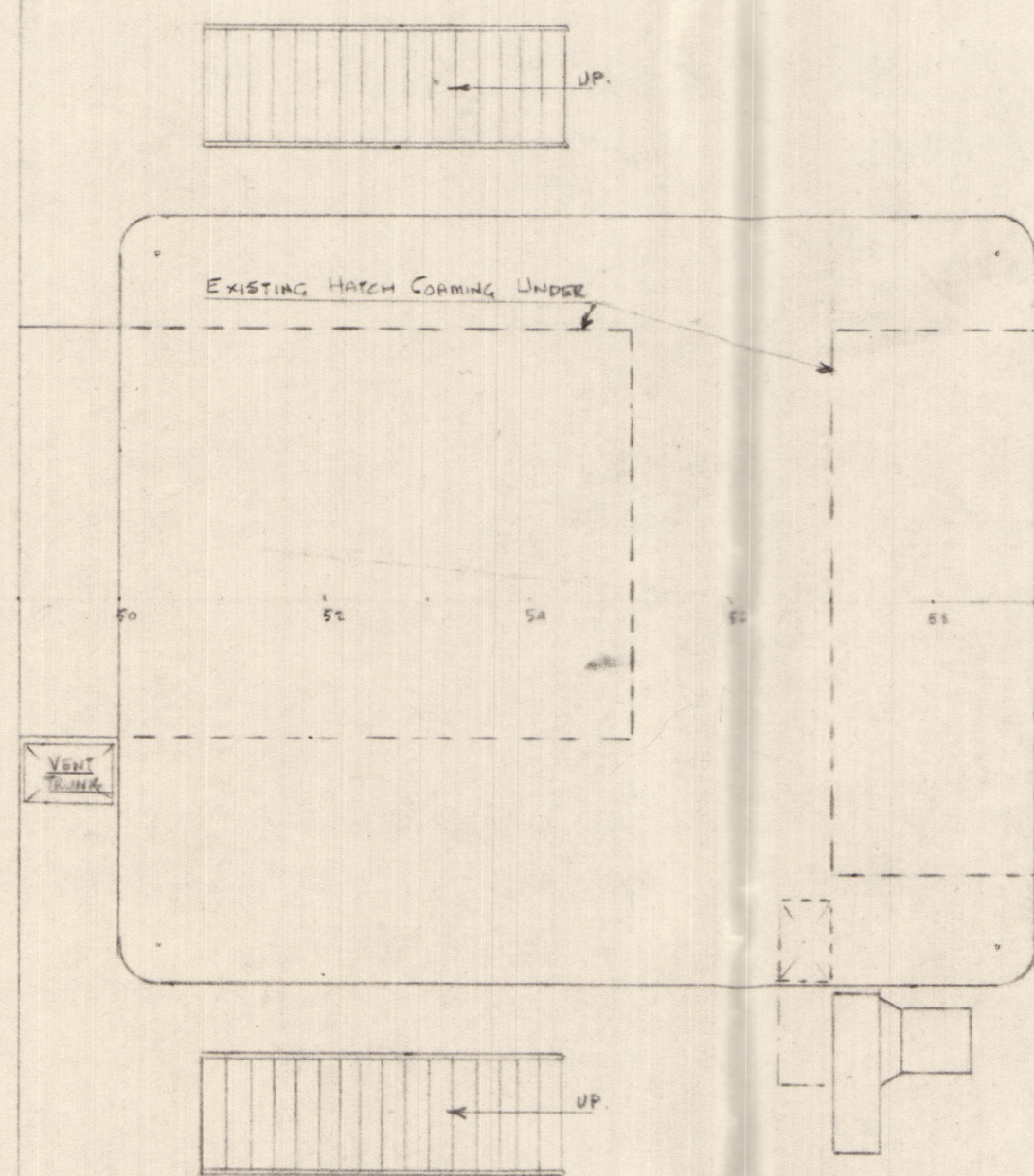


MIS. DUNERA

PROPOSED ARRANGEMENT SHOWING
SWIMMING POOL ASSEMBLY HALL &
LECTURE ROOMS ON FROM DECK
SCALE 1/4" = 1'-0"

415 Seats for Lectures
330 Seats for Cinema (Based on Wide Screen - 10'-0")

PART PLAN AT
SHELTER DECK (C)

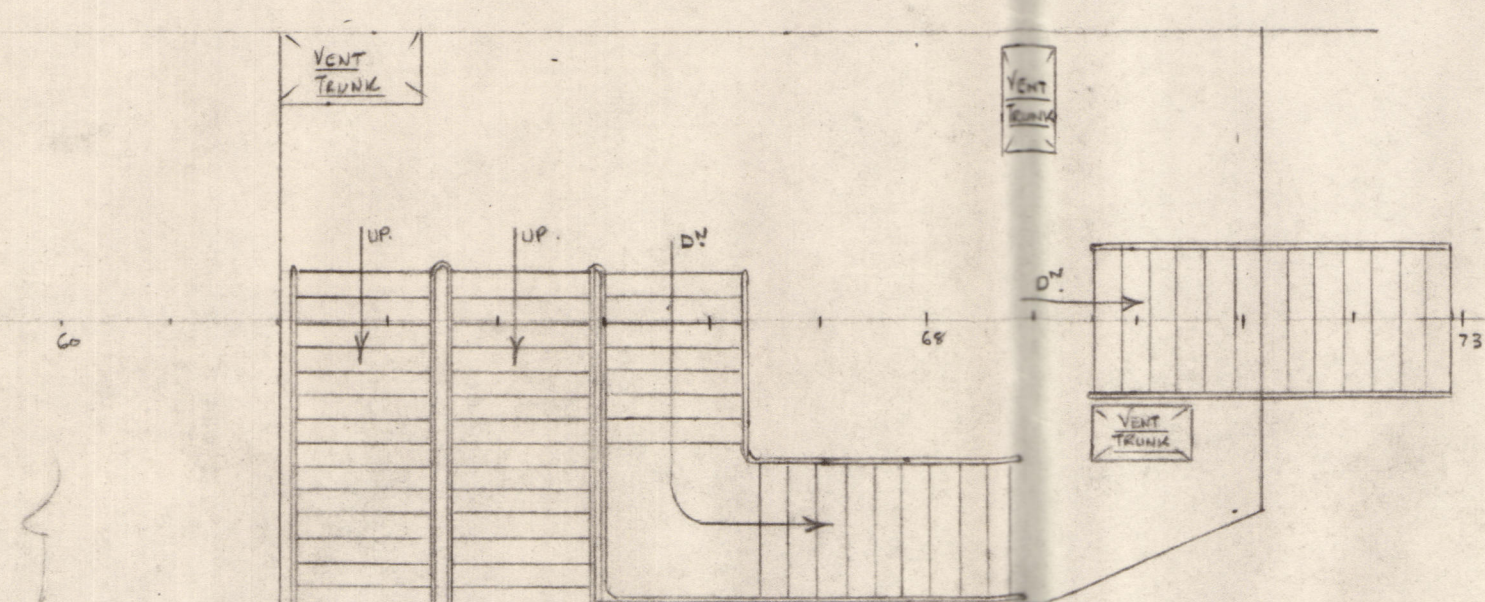


Area = 2040

$$N = \frac{20' \times 17' \times 3}{100} = 204$$

12' x 10' floor 5:170"

PART PLAN AT
UPPER DECK (D)



DATE 29/5/17
DRAWING OFFICE
LONDON

Office Copy

10/11
7/6/63
© 2021