

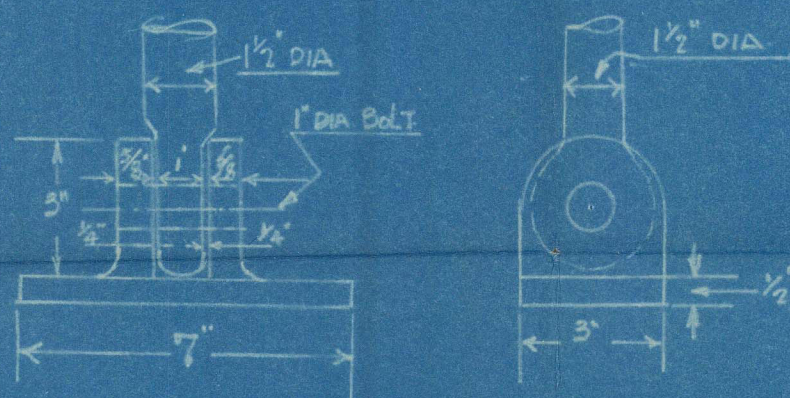
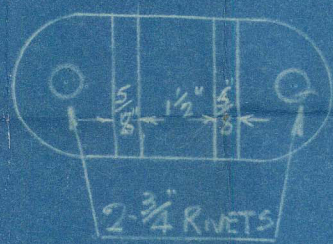
55. "TEMPLE ARCH." W.T. HATCHES

SCALE: 1/2" = 1'-0"

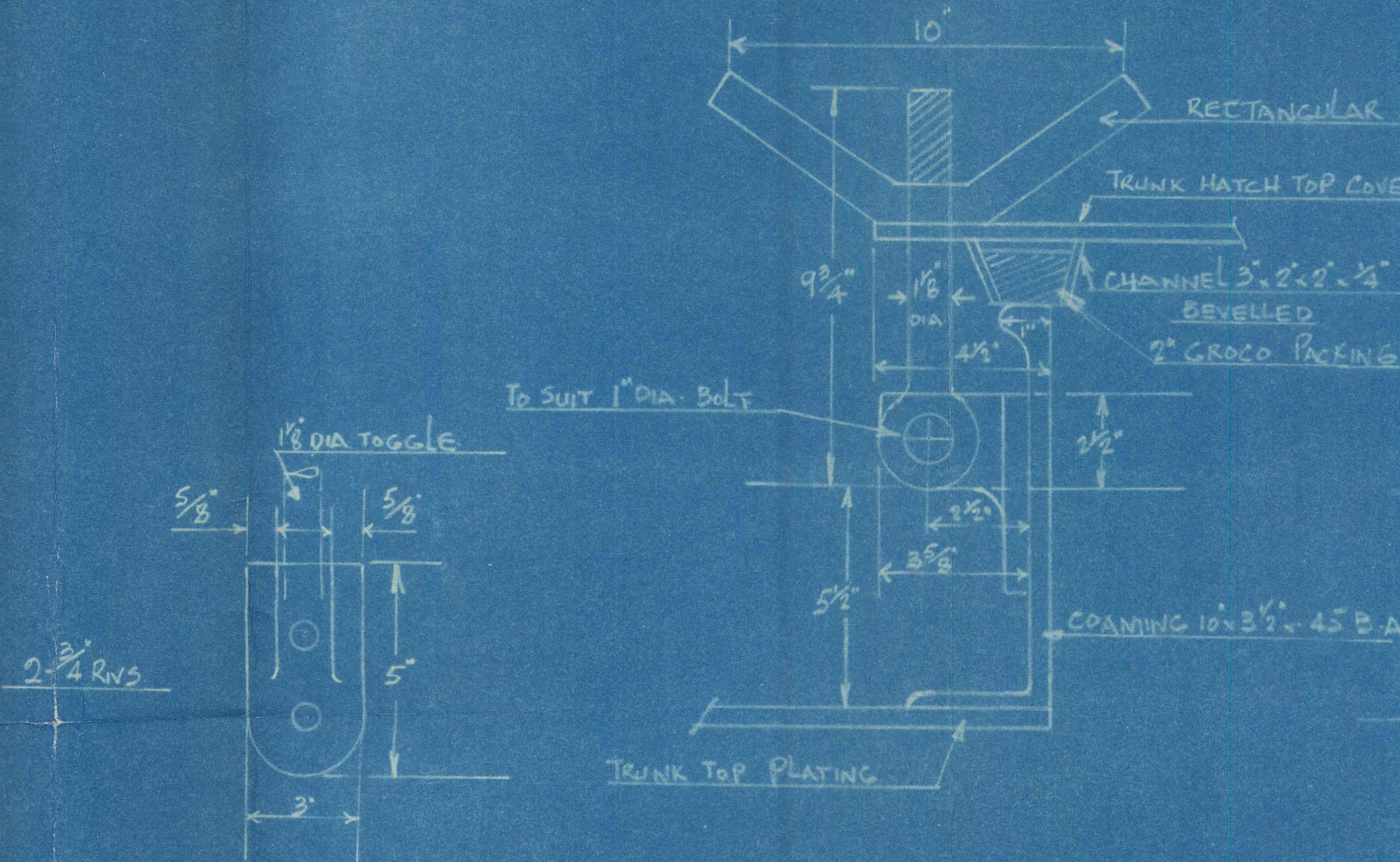
CHANNELS RIVETED TO HATCH COVERS AND PLACED ON COAMINGS WITHOUT
PACKING IN POSITION. HINGES THEN TO BE DRILLED FOR AND RIVETED
WITH CHANNEL FAIR ON COAMINGS.



JAWS TO BE A SUITABLE WIDTH
TO ALLOW ROD BEING UNSHIPED
FROM REST



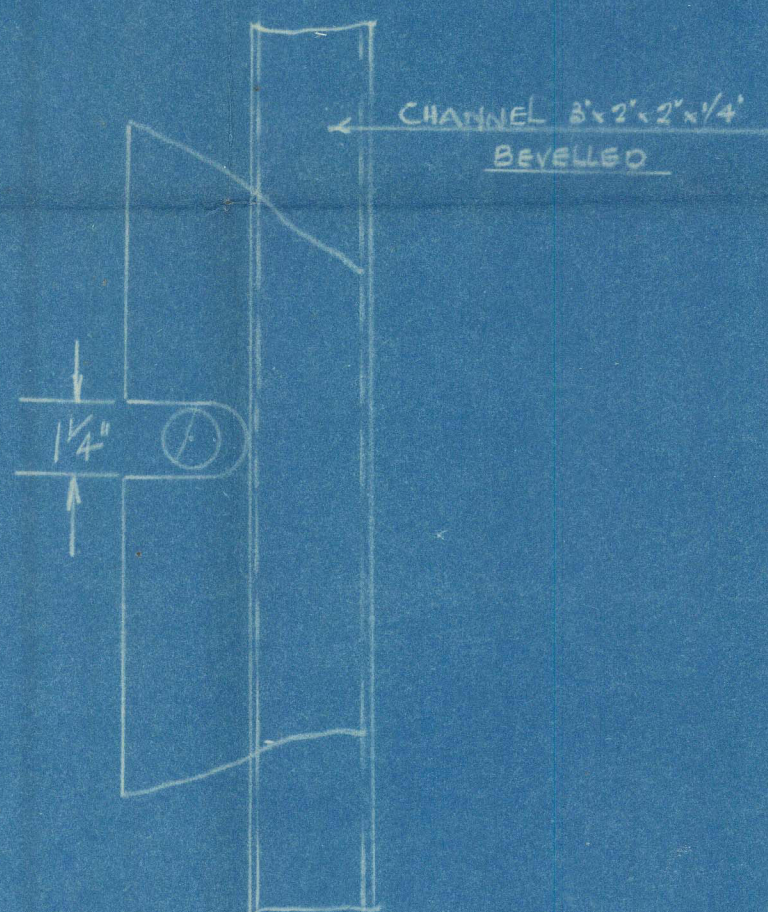
DETAIL OF ROD SUPPORTS



DETAIL OF TOGGLES

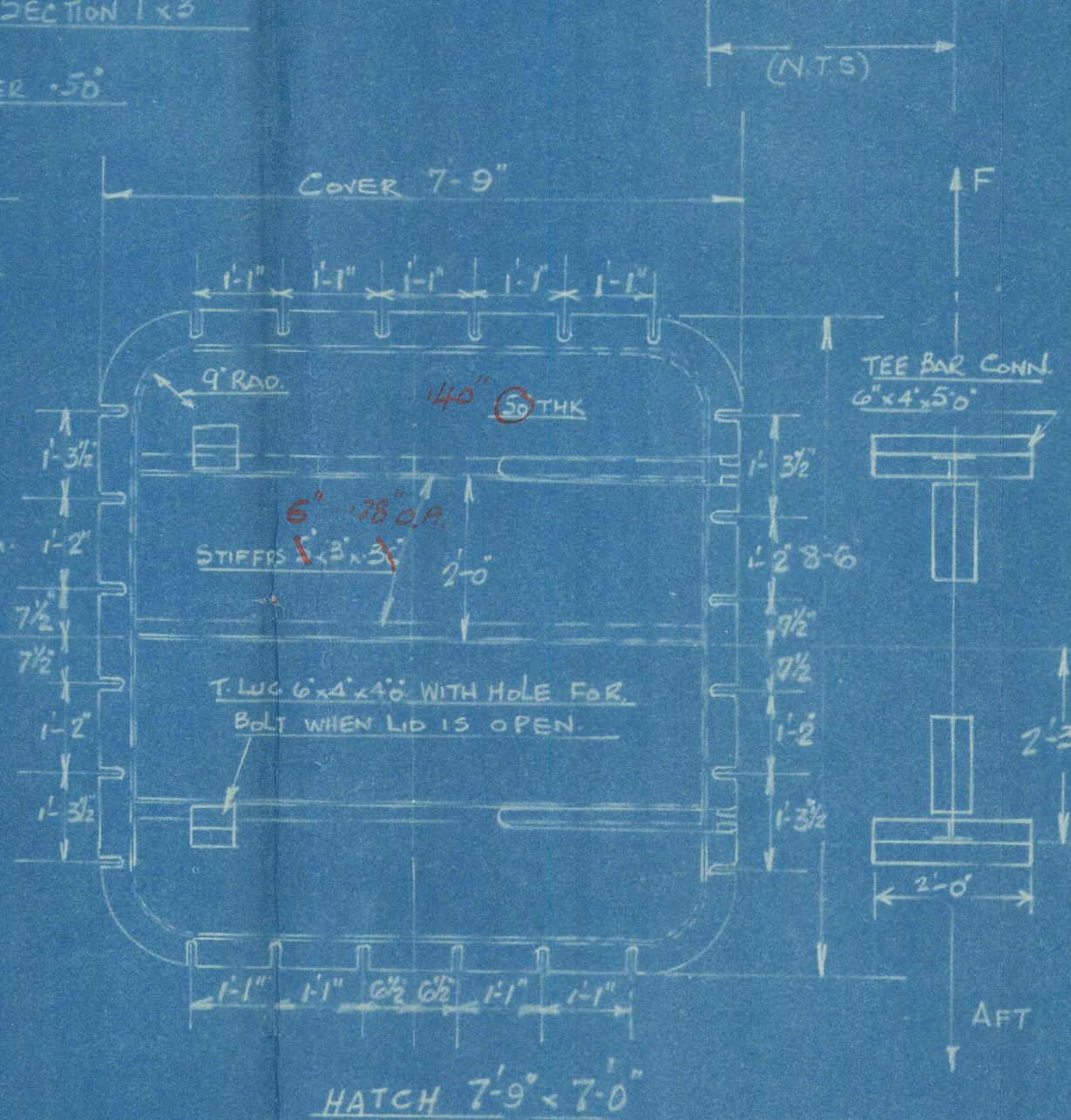
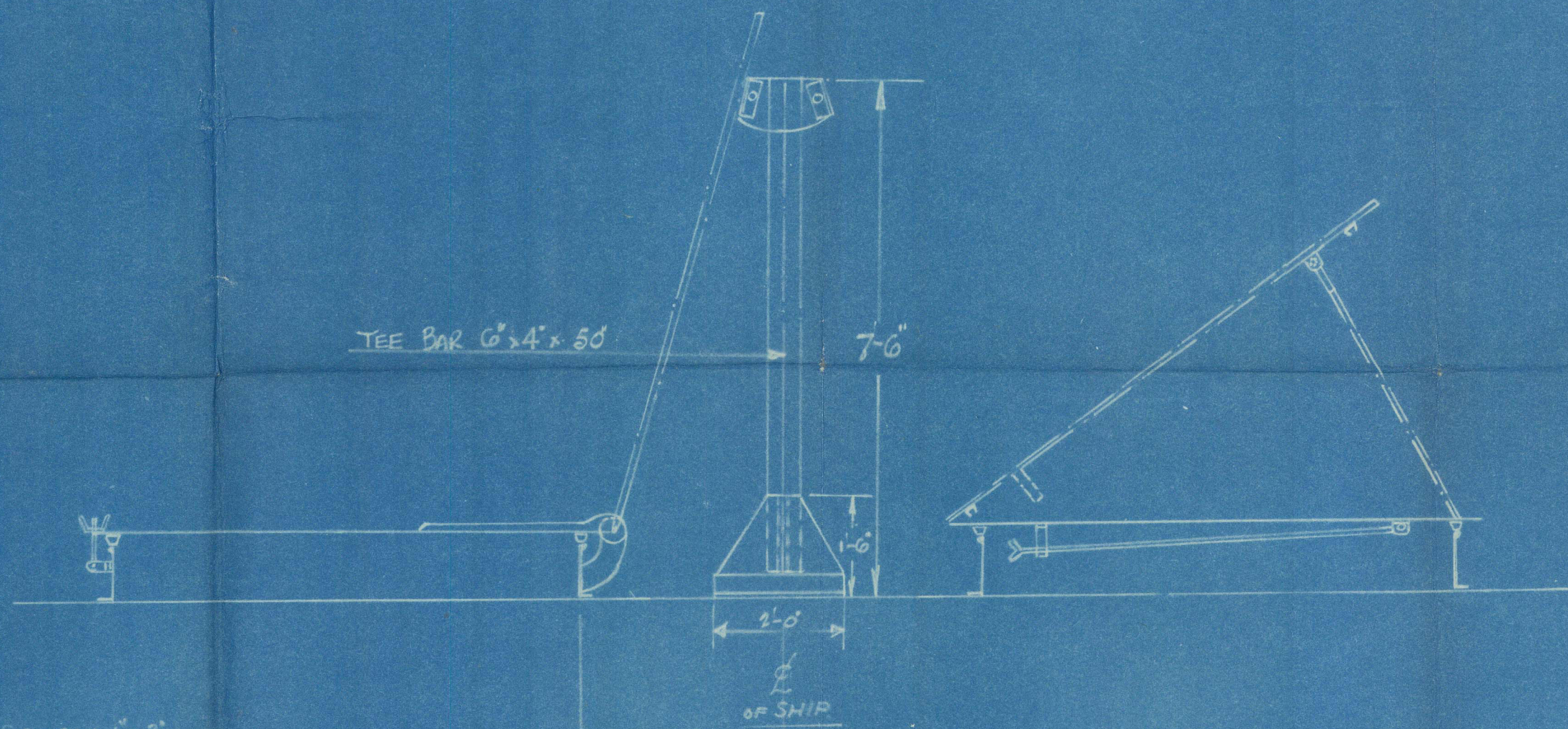
SCALE: 3" = 1'-0"

26 OFF

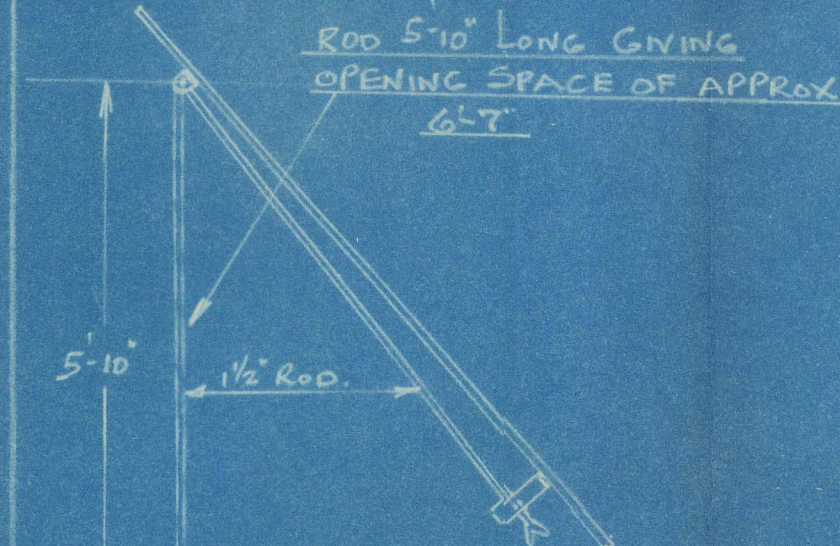


APPROVED
LLOYD'S REGISTER OF SHIPPING
James Clark
3-3-1947

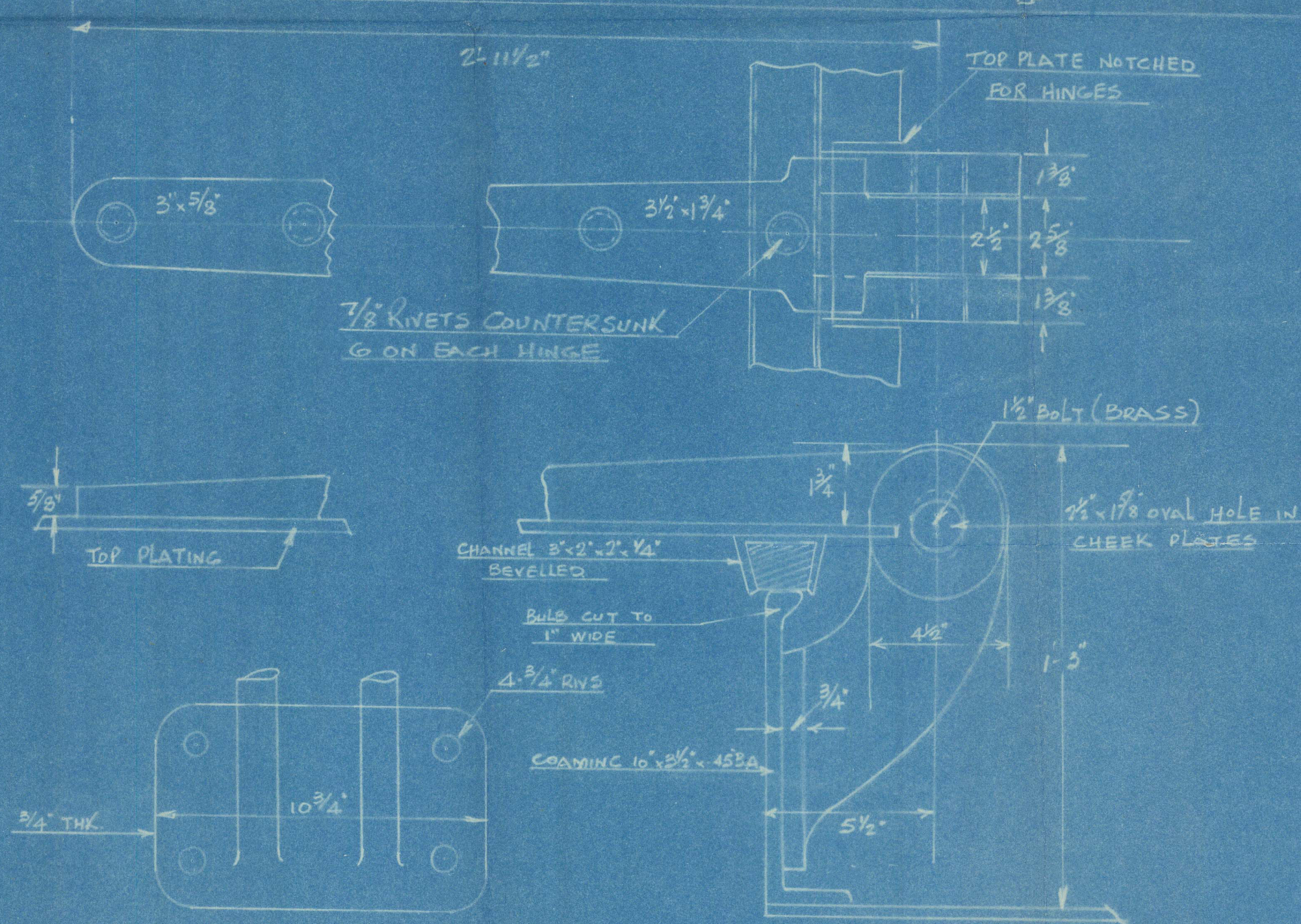
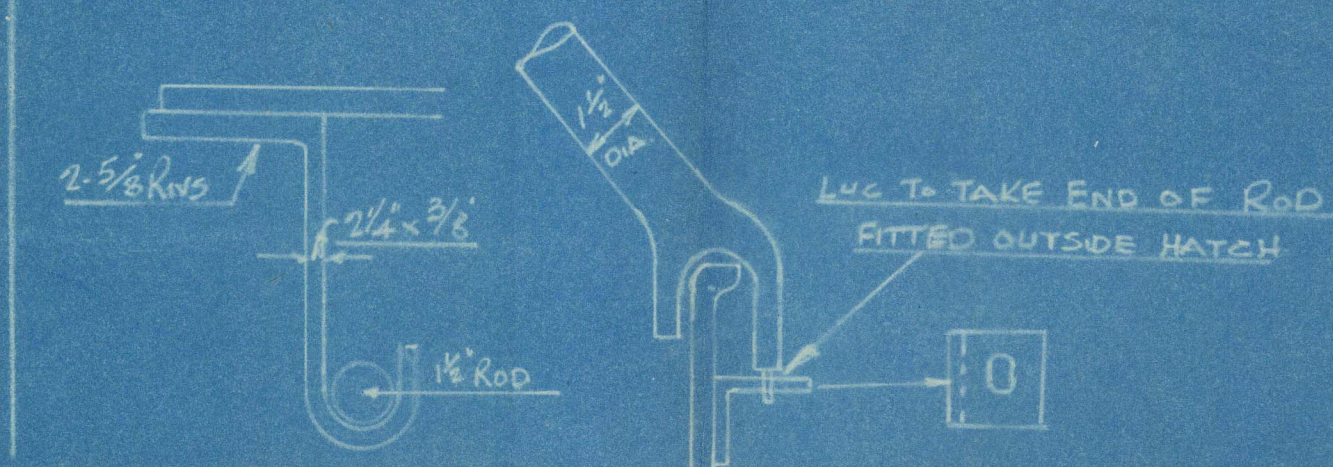
MATERIAL REQUIRED			
2 PLATES @ 8'-6" x 9'-3 1/2" x 50"		WT. 1.20 TONS.	FOR TWO HATCHES
2 B.A. @ 31'-0" x 10' x 3 1/2" x 45"		WT. 1.66 TONS.	
2 CHANNELS @ 31'-0" x 3' x 1 1/2" x 1/4" x 25"		WT. 1.14 TONS.	
2 ANGLES @ 23'-5" x 5' x 3" x 3/8"		WT. 1.16 TONS.	
1 T. BAR @ 16'-0" x 6" x 3" x 50"		WT. 1.10 TONS.	
		TOTAL 2.76 TONS	



HATCH 7'-9" x 7'-0"



DETAIL OF ROD FOR COVER SUPPORT
4 OFF



DETAIL OF HINGES

FOR O.T. HATCH COVERS
8 OFF

Temple Arch

Hatch



© 2021

Lloyd's Register
Foundation

004430-004438-0129