

S. S. "EMPIRE TALISMAN." "Y7 TYPE" MIDSHIP SECTION

SCALE 1/2" = 1' FOOT

DIMENSIONS - 425' 0" B.P. ON L.W.L. - 56' 0" M.D. - 56' 3" EXT. - 27' 9" M.D. TO 2ND DECK - 30' 11" M.D. TO UPPER DECK
TO CLASS 100A1 WITH FREEBOARD AT LLOYD'S SPECIAL SURVEY

LLOYD'S NUMERALS			
FIRST LONGITUDINAL NUMBER	L + D = 425 + 35.75	=	15194
SECOND LONGITUDINAL NUMBER	L + (B + D) = 425 + (56 + 35.75)	=	38944
L/D TO UPPER DECK	425 ÷ 36.91	=	11.51
D MOULDED DEPTH	27.75 + 8	=	35.75
d	27.75 - (3.6 + .25 FOR HIGHER BRACKET)	=	23.9
d	AT HALF LENGTH FORWARD	=	24.17

THE SCANTINGS ARE SUITABLE FOR A DRAUGHT 18 IN.
EXCESS OF THAT CONTEMPLATED BY THE RULES FOR A
COMPLETE SUPERSTRUCTURE VESSEL HAVING A TONNAGE OPENING

EQUIPMENT NUMBER			
SECOND LONGITUDINAL NUMBER	425 + (56 + 36.91)	=	39487
MIDSHIP ACCOMMODATION AND CASING	99 + 8 + 1/2	=	396
FORECASTLE	35 + 7.5 + 1/2	=	197
HOUSE AFT	30 + 7.5 + 1/2	=	112
EQUIPMENT NUMBER		=	40192

EQUIPMENT
2 BOWER ANCHORS 68 CWT'S EACH STOCKLESS
1 STREAM ANCHOR 13 CWT'S EX-STOCK
225 FATHOMS 2 1/8" STUD CHAIN CABLE 600 CWT'S RULE 270 FATHOMS
90 FATHOMS 1 1/8" STREAM CHAIN OR 5 FLEXIBLE STEEL WIRE 6 x 12
120 FATHOMS 4 1/4" SPECIAL FLEXIBLE STEEL WIRE 6 x 24
2 HAWKERS 90 FATHOMS 8 HEMP OR 2 1/4" FLEXIBLE STEEL WIRE 6 x 12
2 WARPS 30 FATHOMS 7 HEMP OR 2 1/2" FLEXIBLE STEEL WIRE 6 x 12

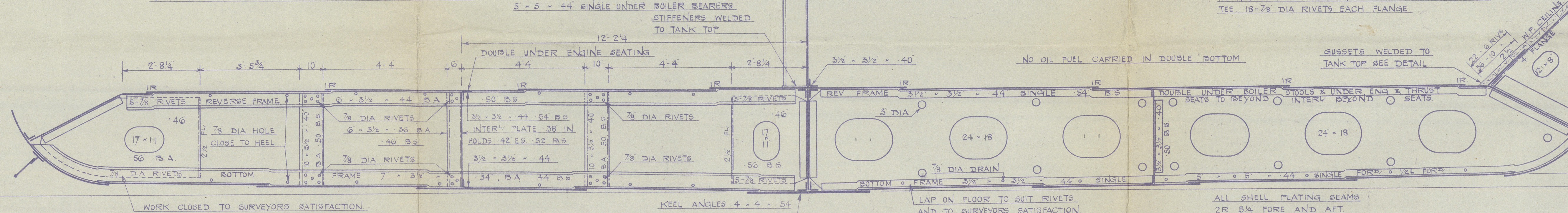
RIVETING NOTE

RIVETS IN FRAMES TO FLOORS IN PEAK TANKS SPACED 5 DIA APART CR TO CR.
RIVETS IN FRAMES TO FLOORS AT FLAT OF DOUBLE BOTTOM FORWARD OF 1/2 L FORWARD SPACED 5 DIA APART CR TO CR 2 COMPLETE ROWS REELED.
RIVETS IN FRAMES TO SHELL AT FLAT OF DOUBLE BOTTOM FORWARD OF 1/2 L FORWARD SPACED 5 DIA APART CR TO CR 2 COMPLETE ROWS REELED.
RIVETS IN B.A. FRAMES TO SHELL AT FLAT OF DOUBLE BOTTOM FORWARD OF 1/2 L FORWARD SPACED 5 DIA APART CR TO CR.
RIVETS IN BOTTOM FRAMES TO SHELL AT FLAT OF 1/2 LENGTH FORWARD SPACED 6 DIA APART CR TO CR.
RIVETS IN BOTTOM FRAMES TO FLOORS AFT OF 1/2 LENGTH FORWARD REVERSE FRAMES TO FLOORS AND INNER BOTTOM PLATING SPACED 7 DIA CR TO CR.
RIVETS IN SIDE FRAMES TO SHELL SPACED 5 DIA APART CR TO CR AND 7 DIA CR TO CR CLEAR OF 30 FRAME SPACING DEEP FRAMING AND TANKS.
RIVETS IN VERTICAL ANGLES CONNECTING FLOORS AND SIDE GIRDERS SPACED 7 DIA CR TO CR 5 DIA IN WT FLOORS AND UNDER ENGINE SEAT.
RIVETS IN WATERTIGHT FLOOR STIFFENERS SPACED 5 DIA APART CR TO CR.
RIVETS IN FLAT KEEL ANGLES, VERTICAL ANGLES CONNECTING FLOORS AND CENTRE GIRDER, AND SHELL DECK AND TANK TOP PLATE OF WATERTIGHT BULKHEAD FRAME SPACED 5 DIA APART CR TO CR.
RIVETS IN BULKHEAD PLATE OF WATERTIGHT BULKHEAD FRAME MARGIN PLATE ANGLE AND WEATHER DECK STRINGER ANGLE SPACED 4 1/2 DIA CR TO CR.
RIVETS IN WATERTIGHT BULKHEAD STIFFENERS SPACED 7 DIA APART CR TO CR AND 6 DIA CR TO CR IN BALLAST TANK WT BULKHEADS.
RIVETS IN CENTRE GIRDER TOP ANGLES SPACED 5 DIA APART CR TO CR WATERTIGHT AND 7 DIA CR TO CR NON-WATERTIGHT.
RIVETS IN WATERTIGHT FLOOR FRAME AND REVERSE FRAME SPACED 5 DIA APART CR TO CR BOTH FLANGES.
RIVETS IN DECK BEAMS TO PLATING ON EVERY FRAME SPACED 7 DIA APART CR TO CR.

RIVETS IN 4R BUTTS OF OUTSIDE PLATING AND OF DECK STRINGER PLATES SPACED 4 DIA APART CR TO CR.
RIVETS IN 3R BUTTS OF OUTSIDE PLATING AND OF DECK STRINGER PLATES SPACED 3 DIA APART CR TO CR.
RIVETS IN BUTTS OF DECK PLATING SPACED 4 DIA APART CR TO CR.
RIVETS IN WATERTIGHT BULKHEAD STIFFENERS SPACED 7 DIA APART CR TO CR AND 6 DIA CR TO CR IN BALLAST TANK WT BULKHEADS.
RIVETS IN CENTRE GIRDER TOP ANGLES SPACED 5 DIA APART CR TO CR WATERTIGHT AND 7 DIA CR TO CR NON-WATERTIGHT.
RIVETS IN WATERTIGHT FLOOR FRAME AND REVERSE FRAME SPACED 5 DIA APART CR TO CR BOTH FLANGES.
RIVETS IN DECK BEAMS TO PLATING ON EVERY FRAME SPACED 7 DIA APART CR TO CR.

THE SCANTINGS OF ANGLE AND BULB ANGLE SECTIONS
GIVEN ON THIS PLAN ARE NEW BRITISH SECTIONS AND ARE
THE MINIMUM ACCEPTABLE FOR THE FULL DRAUGHT.

STEM 10 x 2 1/2 STERNPOST 10 x 8 RUDDER POST 10 x 8



DISPOSITION OF FLOORS
SOLID FLOORS ON EVERY FRAME IN ENGINE SPACE AND FORWARD
35 LENGTH FORWARD UNDER BOILER BEARERS AND WT BULKHEADS
ELSEWHERE SOLID FLOOR ON EVERY THIRD FRAME, BRACKET FLOORS
INTERMEDIATE AND AS SHOWN ON PROFILE PLAN.

KEEL OUT

52 x 78 FOR 3/8 L Q TO
- 68 AT ENDS BUTTS LAPPED
AND 4R TO 3R AT ENDS
1 DIA RIVETS IN BUTTS OVER 72

A IN

78 x 68 FOR 1/2 L Q
TO 56 AT ENDS
BUTTS LAPPED AND 4R-3R

B OUT

72 x 68 FOR 1/2 L Q
TO 55 AT ENDS
BUTTS LAPPED AND 4R-3R

C CLINKER

72 x 68 FOR 1/2 L Q
TO 55 AT ENDS
BUTTS LAPPED AND 4R-3R

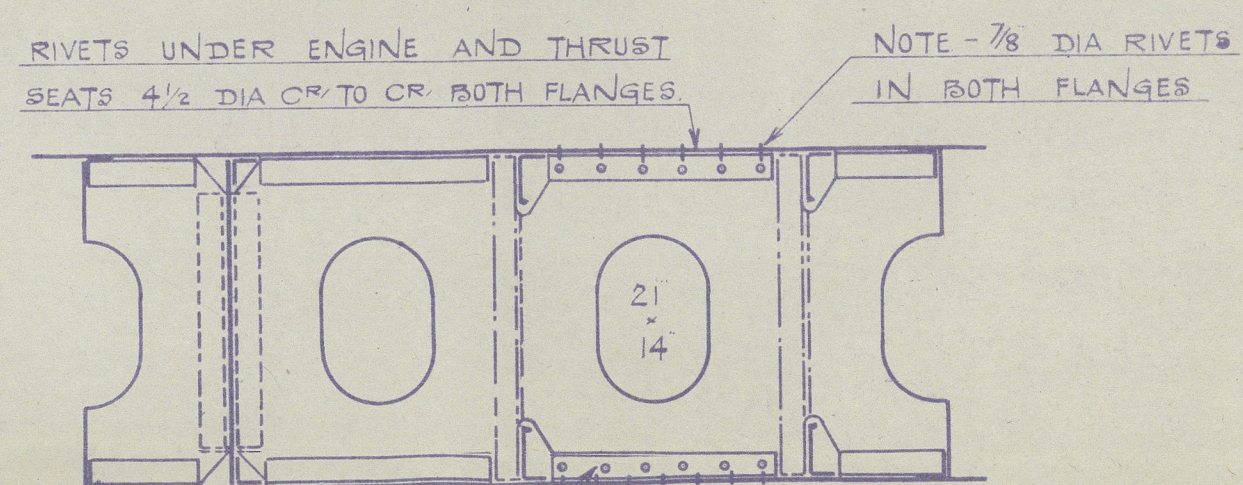
D IN

72 x 68 FOR 1/2 L Q
TO 55 AT ENDS
BUTTS LAPPED AND 4R-3R

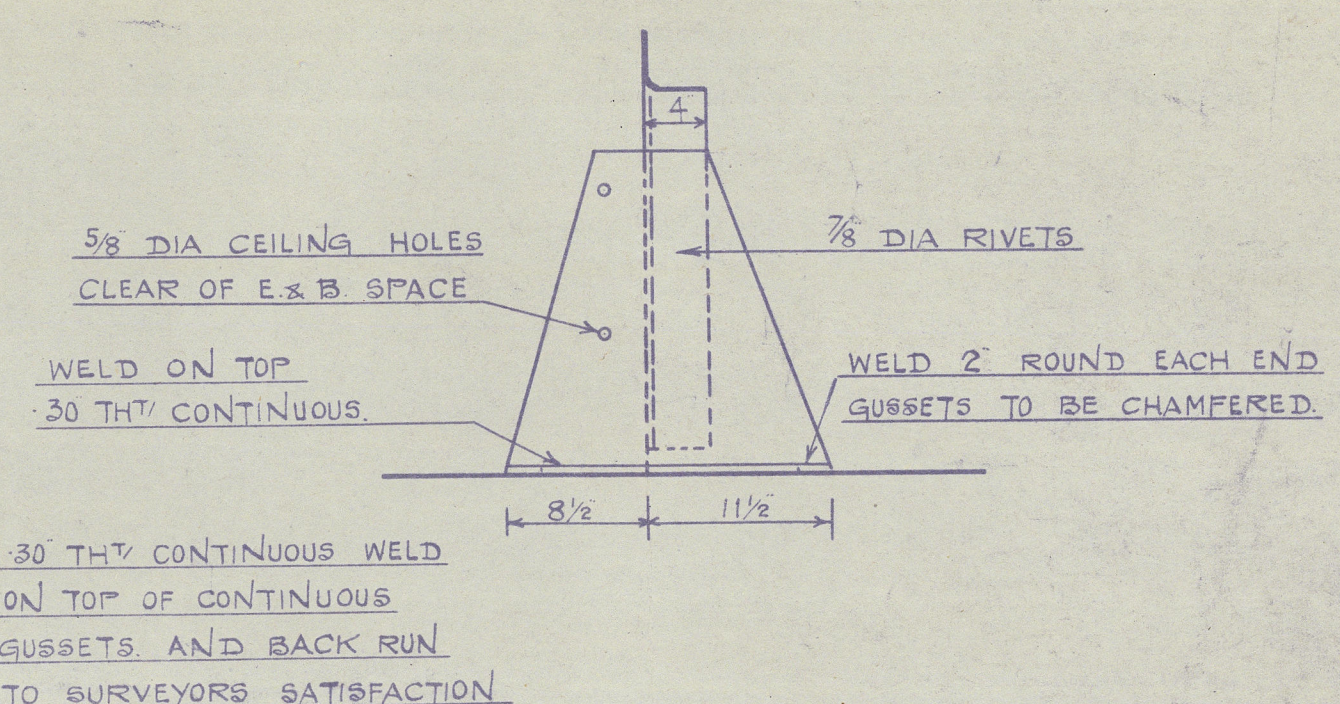
BULGE KEEL 12 x 80 BULB PLATE
RIVETED TO 6 x 4 - 50 TEE FOR
ABOUT 124 FEET MIDSHIPS

MARGIN PLATE TO RULE 39
FITTED ABOUT 44 - 57 TO 39 - 57
AT FORE END 61 B.S.
BUTTS WELDED. SEE DETAIL

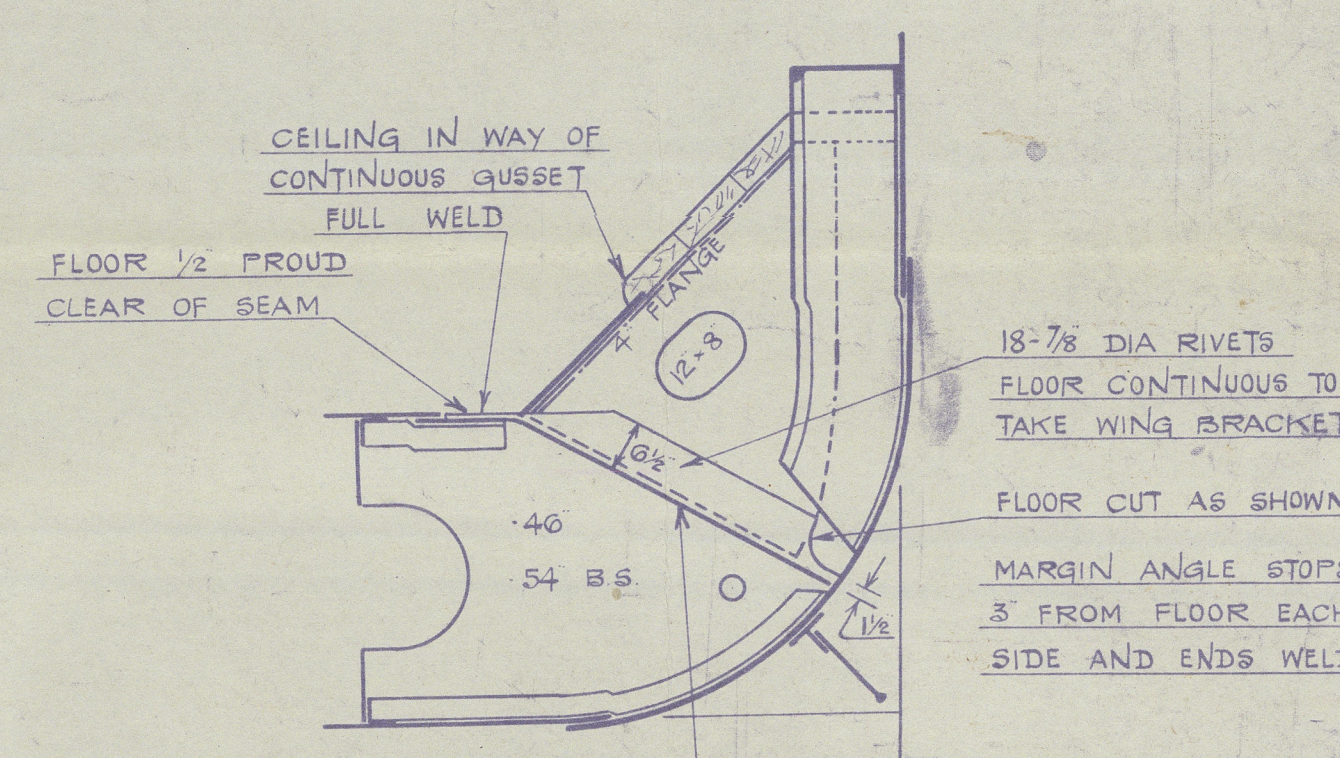
SECTION OF FLOOR AT TANK
MARGIN PLATE BUTT
MARGIN PLATES "STRAIGHT" BETWEEN BUTTS



ELEVATION OF INTERCOSTAL
12-2 1/2 OFF CR P & S



ELEVATION OF TANK GUSSET
SCALE 1" = 1 FT



30 THY DOUBLE CONTINUOUS
WELD ON MARGIN PLATE TO FLOOR

LITHGOWS LTD N° 997.

"As BUILT"

MIDSHIP SECTION.

997

"EMPIRE TALISMAN".

GRIT. 1ST. ENTRY RPT. No. 22733.



© 2020

Lloyd's Register
Foundation

004527-004533-0001