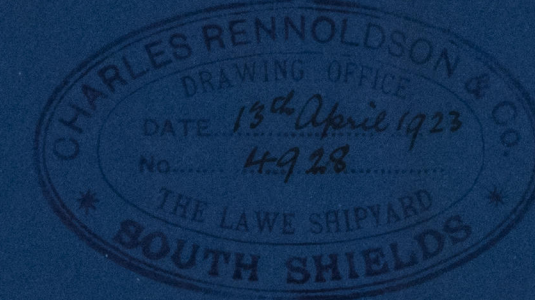


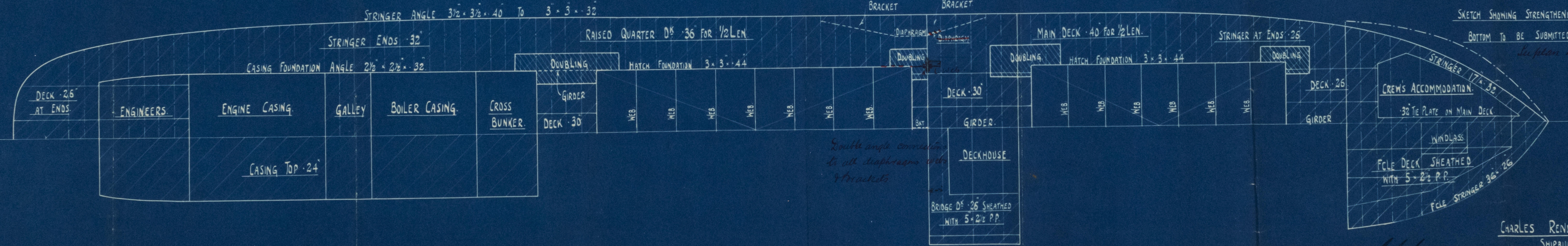
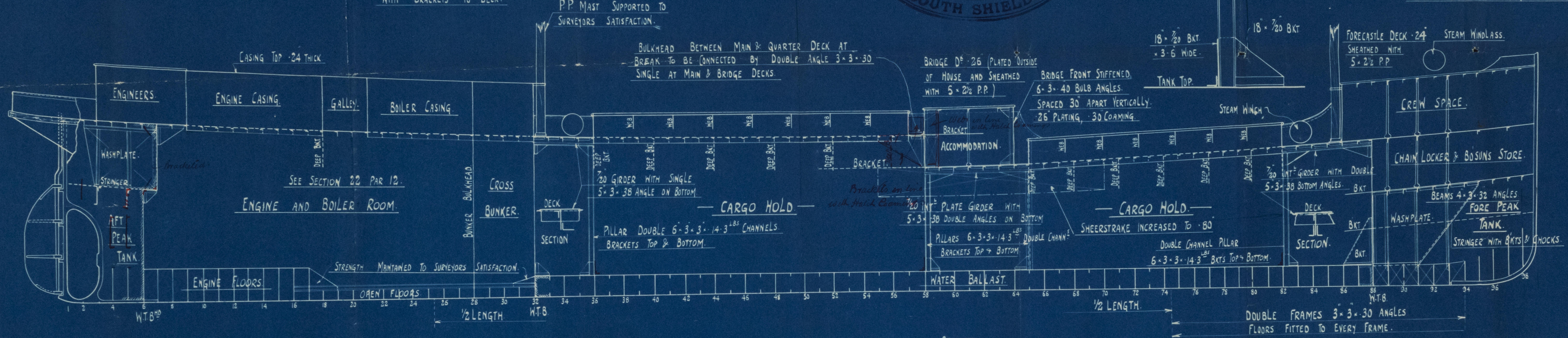
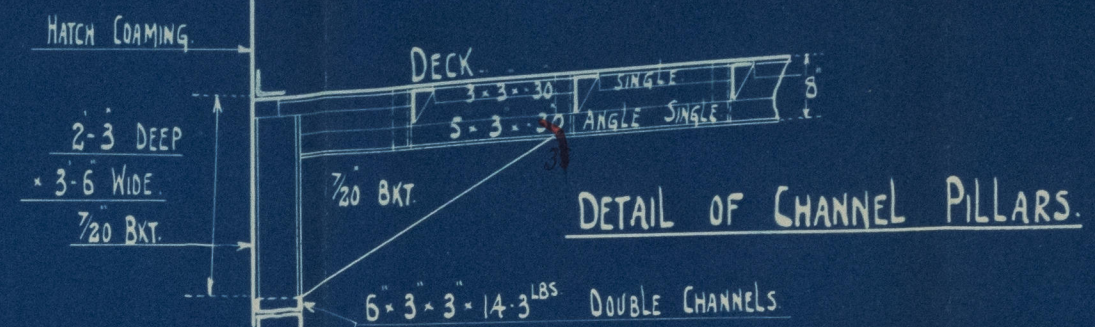
— S. S. N° 198. —
PROFILE & DECK PLAN.
 DIMENSIONS 180'-0" x 28'-0" x 14'-6" MLO.
 SCALE 1/8" = 1 FOOT.



N° 6 BULKHEAD PLATING .32 WITH 7" x 3" x 50 B.A.
 STIFFENERS SPACED 24" APART. *frame double riveted in way of tank*
 N° 7 BULKHEAD PLATING .28 WITH 6" x 3" x 36 ANGLE
 STIFFENERS SPACED 24" APART, BRACKETED TO DECK.
 SINGLE FRAME 4 1/2" x 4 1/2" x 44
 BEAM 3 1/2" x 3 1/2" x 32

N° 32 BULKHEAD PLATING .30 AT DOUBLE BOTTOM.
 .26 AT DECK. STIFFENED WITH 7" x 3" x 38 B.A.
 SPACED 30" APART VERTICALLY
 WITH BRACKETS TO DECK.

N° 88 BULKHEAD PLATING .30 IN WAY OF TANK.
 .26 AT DECK. STIFFENED WITH 5" x 3" x 40 ANGLES
 SPACED 24" VERTICALLY, WITH BXTS AT DECK ONLY.
 BEAM 3" x 3" x 30 SINGLE, FRAME 4" x 4" x 42.



SKETCH SHOWING STRENGTHENING OF
 BOTTOM TO BE SUBMITTED.
See plan approved 14/4/20.

CHARLES RENNOLDSON & CO.
 SHIPBUILDERS.
 SOUTH SHIELDS.



004556 4563-0232

Newcastle-on-Tyne.

C. Renoldson & Sons

198

PROFILE & Decks.

S.S. "SARNIA"

Nwe. Rpt. No.

S.S. "Sarnia"

NEWCASTLE ON TYNE.

Report No. 174162.



© 2020

Lloyd's Register
Foundation

004556-004563-032