

27 MAR 1952

Index No.

43412

Rpt. C.11.

F.1499-0GT1952

Lloyd's Register of Shipping.

SURVEYS FOR FREEBOARD.

(CONDITIONS OF ASSIGNMENT.)

Index No. 43412.
(For London Office only.)

Ship's Name "BRAEMAR CASTLE"

Port of Survey BELFAST.

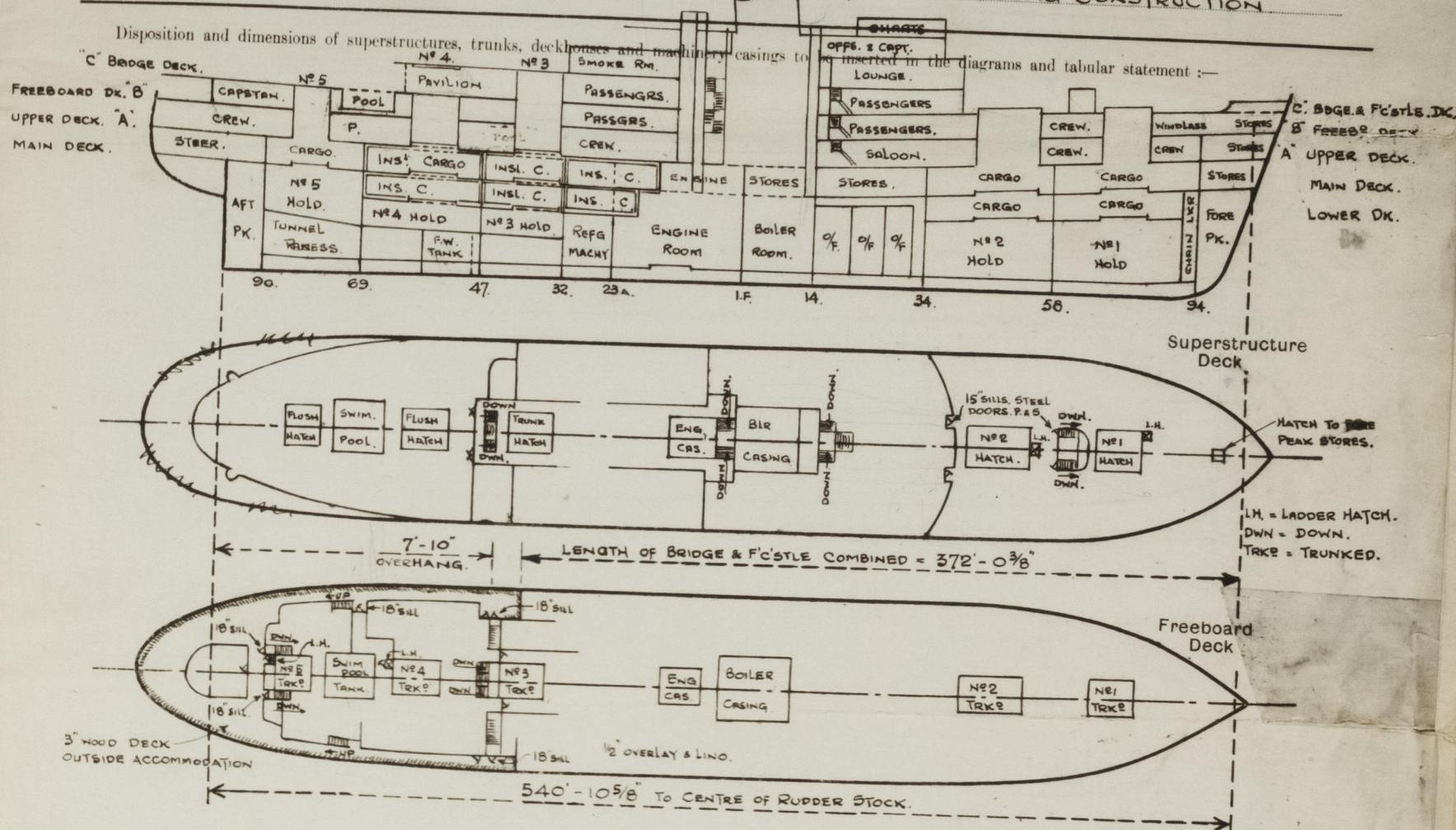
Official Number 184728.

Surveyor's Signature A.S. Fletcher

Nationality and Port of Registry BRITISH - LONDON.

Date of Survey DURING CONSTRUCTION

Disposition and dimensions of superstructures, trunks, deckhouses and machinery casings to be inserted in the diagrams and tabular statement:—



Particulars of Superstructures, Trunks, Casings, Deckhouses.

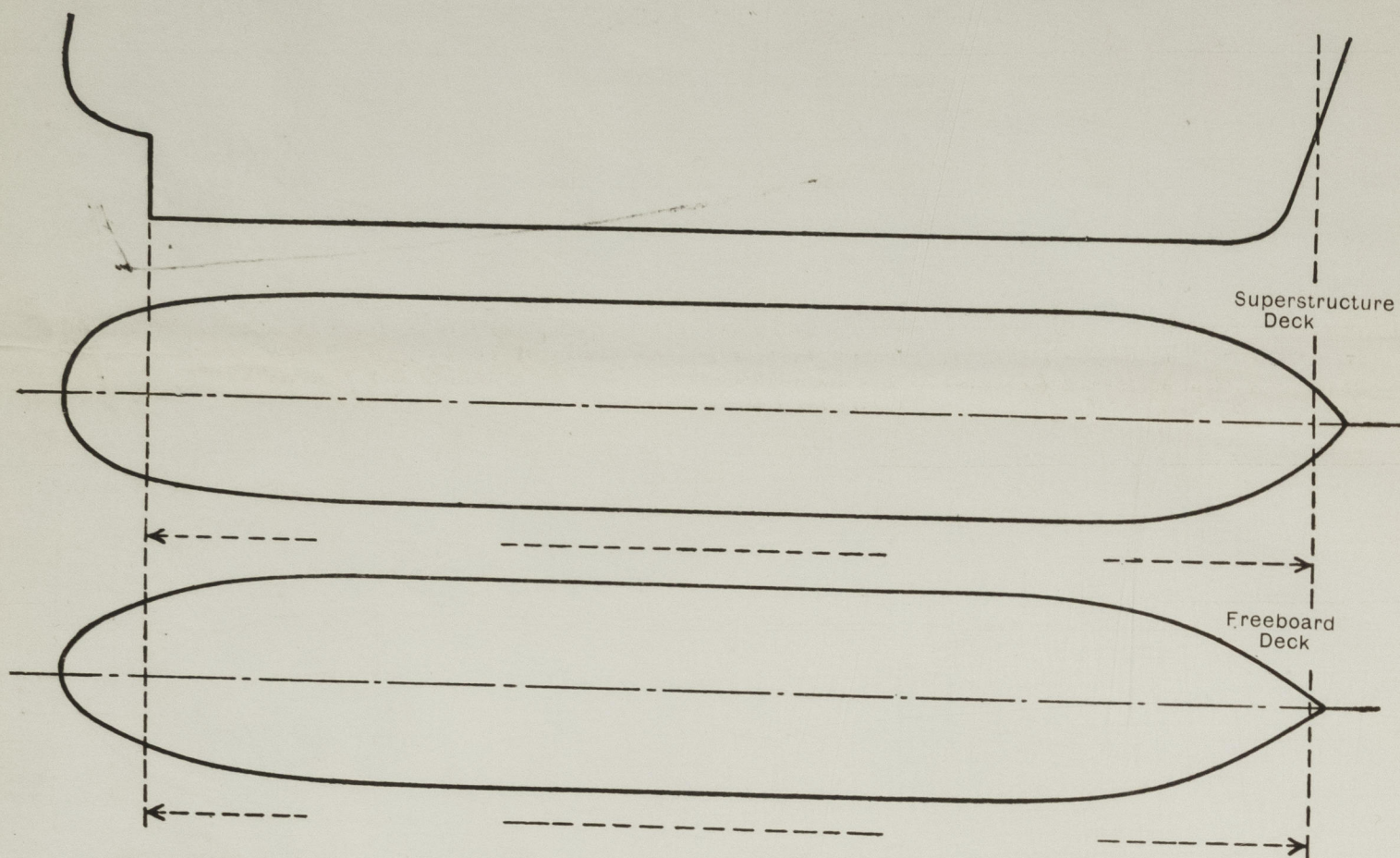
	Coaming	Plating	Stiffeners	Spacing	End Attachments of Stiffeners	Size of Openings	Height of Sills	Height of Casings
Poop Bulkhead ...	✓							
Raised Quarter Deck Bulkhead ...	✓							
Bridge, After Bulkhead ...	38"	38"	6" x 3" x 30" BA.	30"	Welded top & bottom	6 @ 5'-3" x 30"	18"	8'-6"
Bridge, Forward Bulkhead ...	38"	38"	7" x 3" x 40" BA.	30"	- do -	2 @ 5'-6" x 30"	12"	8'-6"
Bridge, After Bulkhead ON SUPERSTRUCTURE DECK.	32"	30"	4" x 2 1/2" x 38" BA.	30"	- do -	2 @ 5'-6" x 33"	15"	8'-6"
Trunk, Aft ...	✓					2 @ 6'-0" x 5'-0"	9 1/2"	8'-6"
Trunk, Forward ...	✓					2 @ 6'-0" x 2'-3"	6"	8'-6"
Exposed Machinery Casings on Freeboard or Raised Quarter Decks ...	not exposed							
Exposed Machinery Casings on Superstructure Decks ...	not exposed							
Machinery Casings within Superstructures not fitted with Class I Closing Appliances BRIDGE SPACE ...	40"	30"	4" x 3" x 46" on	every frame continuous		no openings	✓	8'-6"
Deckhouses on Flush Deck Ships ...	✓							

Particulars of Closing Appliances (state if capable of being manipulated from both sides).

Poop Bulkhead ...	✓
Raised Quarter Deck Bulkhead ...	✓
Bridge, After Bulkhead (GIVING ACCESS TO STAIRWAYS LEADING BELOW FREEBOARD DECK).	Hinged solid teak doors, operated from both sides.
Bridge, Forward Bulkhead ON SUPERSTRUCTURE DECK.	Hinged steel w.t. doors, operated from both sides.
BRIDGE AFTER Bulkhead ON SUPERSTRUCTURE DECK.	Hinged solid wood doors, operated from both sides.
Exposed Machinery Casings on Freeboard or Raised Quarter Decks ...	no openings
Exposed Machinery Casings on Superstructure Decks ...	no openings
Machinery Casings within Superstructures not fitted with Class I Closing Appliances ...	no openings
Deckhouses on Flush Deck Ships ...	✓

PARTICULARS OF PROTECTION TO OPENINGS, ETC.

The following diagrams should be used to indicate the positions of cargo and coaling hatchways, gangway, cargo and coaling ports, ventilators, companionways, etc., which would affect the seaworthiness of the ship:—



Particulars of hiddle, funnel and ventilator coamings, engine room skylight and other openings in machinery casing tops and their means of closing:—
Four deck heights above freeboard deck and of substantial construction. ✓

Particulars of Flush Bunker Scuttles:— *None.*

None.

Beckhouse on superstructure deck forward, situated between No 1 & 2 hatchways, strongly constructed & stiffened, with companion entrances at after end of house p.s.s. leading to crew quarters below. Boat openings 5'-3" x 30" x 15" sills above wood deck, with hinged steel doors operated from both sides. Trunk built inside aftermost end of Bridge end (p.s.) giving access to No 5 hold 2'-9" x 2'-6" x 3'-6" plating, strongly constructed & carried up to height of bridge deck. Opening in bridge end 5'-0" x 2'-4" with 18" sill above wood deck & closed by steel hinged door operated from both sides.

Particulars of Companionways: —
Beckhouse on freeboard deck aft, forming continuation of Bridge end, protecting stairways leading below freeboard deck. Beckhouse strongly constructed and stiffened of 3/4" plating & 6 x 3" x 30" spaced 35". Openings in sides 1 @ 5'-6" x 30" with 18" sills p.s., 1 @ 5'-3" x 30" with 20" sills p.s. and 1 opening p.s. in after end 5'-3" x 30" with 20" sills above wood decks and all closed by 2" thick solid wood hinged doors, operated both sides.

Bridge on superstructure deck, protecting stairways leading to deck on freeboard deck, has 2 openings in front bulkhead with 15" sills above wood deck, and in after bulkhead 2 @ 9'-0" sills with double doors, and 2 @ 6" sills. Sills in openings of Beckhouses on superstructure decks (2nd & 3rd) above freeboard deck are 6" high above wood decks.

Particulars of Ventilators in exposed positions on freeboard and superstructure decks:—

Freeboard Deck (Shade deck 'B') 20 Type type vents 16" x 4" x 36" high coamings .32" thick.

Bridge & Forecastle deck.

8	"	"	"	20"	x	4"	"	"	"	"	"	34"	"
4	"	"	"	16"	x	4"	"	"	"	"	"	34"	"
21	"	"	"	20"	x	4"	"	"	"	"	"	34"	"
3	"	"	"	12"	x	4"	"	"	"	"	"	30"	"
1	"	"	"	38"	x	6"	"	"	"	"	"	38"	"
1	"	"	"	26"	x	10"	"	"	"	"	"	40"	"

Mechanical ventilation provided for passenger spaces, exposed trunks of substantial construction and wakes through sides of houses on foreboard deck aft, coamings 5'-6", and Deckhouses on superstructure deck forward with 3'-6" to 6'-6" coamings and openings fitted with spray tight жалюзиs.

All Tyffe vents provided with canvas covers.

Particulars of Air Pipes in exposed positions on freeboard, raised quarter, or superstructure decks:—

On Freeboard deck aft :- 1 @ 4" dia, & 15 @ 2 1/2" dia, heights 33" to Rudder trunk & N° 6, 7 & 8 d.b. tanks, After Peak & Tunnel F.W. Tanks.
8 @ 2 1/2" dia from d.b. cofferdams & Drain tank in boiler room, with bonds to just below freeboard deck and discharge thro' chips sides with open bonds above 1st deck below freeboard decks.

On 1st Superstructure deck:- 7 @ 2 1/2" dia, heights 33", to No 1 & 2 d.b. tanks; 3 @ 2 1/2" dia, heights 33" to fore peak and with 2 1/2" storm valves below freeboard deck at ship's side.

On 2nd Superstructure deck: - 4 @ 2 1/2" dia height 16" to No 6 & 7 a.b. tanks. ✓
Air pipes from Oil fuel deep bunkers and from PB tanks No 3, 4 & 5 led to common air & overflow mains with air and vapour escape near top of funnel. ✓

All air pipes provided with wood plugs or gauze wire and canvas covers.

Special feature:- Bulkhead deck is First below Freeboard deck.

Special feature:- Bulkhead deck is First below Freeboard deck.

Particulars of Gangway Cargo and Coaling Ports:— Passenger entrance door above freeboard deck p. & s. frames $2\frac{1}{2}$ to $24\frac{1}{2}$ F, opening 8'-7" x 6'-9" with double hinged W.T. doors.
Stores entrance door in 1st tween deck below freeboard deck p. & s. frames 13/15 F, opening 4'-1" x 6'-6" with single hinged W.T. door.
Oil filling station door in 1st tw. dk. below freeb. dk. p. & s. frs 10 $\frac{1}{2}$ /11 $\frac{1}{2}$ F port & 7 $\frac{1}{2}$ /9 $\frac{1}{2}$ A, starb; 5'-0" x 6'-6" with single hinged W.T. doors.
The shell doors are all of steel.

The shell doors are all of strong construction, steel plating .62" thick, framed & stiffened by angles, secured by toggles and made watertight by rubber joining. In addition strongbacks are fitted.

Particulars of Scuppers and Sanitary Discharge Pipes:—Steering gear space drains to transom space with 2" scupper pipe from transom space to tunnel well, with lever weighted cock on after peak bulkhead. The peak spaces drain to drain pot p.s.s. on 2nd deck below freeboard deck and are discharged overboard by 1½ inch rotary pump situated below freebd deck and led overboard above freeboard deck with bend 6'-0" above freebd deck. Galley slop shoot (ss) & rubbish shoot (ps) situated below freeboard dk led overboard below freebd deck with open bends, but fitted with W.T. cover & back balanced non-return flap valves at inboard ends. Scuppers from exposed positions on freeboard & superstructure decks above, led overboard below freebd deck thro' open bends. Discharges from Hospitals & Laundry on freebd deck aft, are led overboard independently with storm valves at ship's side. Scuppers & Bathroom discharges from Accommodation spaces on freeboard deck & above, also from decks below are led into common mains p.s.s. in 2 groups, one forward & one aft. The sanitary discharges are led into separate soil mains p.s.s. these mains pass thro' W.T. bulkheads with sluice valves operated from above 1st deck below freeboard deck and are led to sewage tanks port & starboard below L.W.L. the forward group situated aft of No. 2 hold and the after group in shaft tunnel space, and then overboard by means of elec-driven pumps, duplicated p.s.s. and both forward & aft. The pump discharge pipes from the sewage tanks are carried above L.W.L. and then discharge underwater with sluice freeboard deck. Arrangements are also made for working the system of mains by gravity discharge with a Bye-pass sluice valve worked locally, fitted in the overboard discharge lines. Scuppers & discharges from Main & Crew's Gallies on 1st deck below freebd deck amidships are led overboard independently with storm valves at ship's side & geared to above 1st deck below freeboard deck. (Bulkhead deck).

Particulars of Side Scuttles :—

In first tween deck below freeboard deck, 16", 14" & 12" dia hinged sidelights with C.S. hinged deadlights.
Between freeboard deck and superstructure deck 16", 14" & 12" dia hinged sidelights with C.S. hinged deadlights.

In Bridge space on superstructure deck, rectangular windows in strong brass frames arranged to take portable shutters. Eight shutters supplied. ✓

Vertical distance of Sill of lowest Side Scuttle above top of keel.....40'-0"

Particulars of Guard Rails :—

On Bridge & Forecastle deck forward & after ends clear of Bridge side 3'-10" high, 5 rails, stanchions spaced about 4'-6" apart.

On Prom. deck at sides & after end 3'-9" high, 5 rails, stanchions spaced about 4'-6" apart.

On aftermost 72'-0" of freeboard deck 3'-9" high, 5 rails, stanchions spaced 5'-0" apart.

Particulars of Gangways, Lifelines, etc. :—

None provided owing to limited draught. /

Particulars of Freeing Arrangements.						
	Length of Bulwark	Height of Bulwark	Size of Freeing Ports	Number each side	Area each side	Rule area each side
ON FREEBOARD DECK. After Well	184'-0"	3'-8" ✓	72'-0" open rails aft P.S.	nil	264 sq.ft.	✓
ON SUPERSTRUCTURE DK. Forward Well	180'-0"	3'-8" ✓	open rails	✓	✓	✓
State position of each freeing port { After Well :— ✓ (F. and A. position and height above deck edge) { Forward Well :— ✓						
State whether the freeing ports are fitted with shutters, bars, or rails, and give particulars of such :— ✓						
Additional area where sheer is less than standard. ✓						

PARTICULARS OF PROTECTION TO OPENINGS, ETC.

HATCHWAYS ON FREEBOARD AND SUPERSTRUCTURE DECKS.									
BRIDGE & FORECASTLE DECK.									
--- PROM. DK. "D" --- FREEBOARD DK. ---									
Description of Hatchway
Dimensions of Hatchway
COAMINGS	Height above Deck
	Thickness
	Sides
	Ends
HATCH BEAMS	Number
	Spacing
	Scantling and Sketch
	Top FLANGE
FORE AND AFTERS	Number
	Spacing
	Unsupported Lengths
	Scantling and Sketch
HATCH COVERS	Material
	Thickness
	How fitted
	Bearing Surface
Spacing of Cleats
Number of Tarpaulins

Particulars of any special features:— Bulkhead deck is first below freeboard deck. ✓

The flush hatchways at Nos 4 & 5 on first superstructure and Nos 3 & 4 on second superstructure are trunked to the first deck below freeboard deck, and have steel troughs efficiently drained by scuppers p. & s., which are led overboard through open bends. In addition false decking is fitted at hatchway in steel angle frames and secured to the deck by brass studs. See above for particulars of tarpaulins and battering arrangements for these hatches. ✓

The scantlings for this vessel are arranged for a freeboard corresponding to an all season draft of 28'-1" mld. ✓

Special feature:— Bulkhead deck is First below Freeboard deck. ✓