

A hand-drawn technical sketch of a ship's hull cross-section. The drawing includes several horizontal lines representing different structural levels. Key features include:

- Top Section:** A curved line at the top left labeled "6' 2 1/2\"
- Middle Section:** A horizontal line with three circles below it, each containing a Greek letter phi ( $\phi$ ). Below these are two vertical dimension lines with arrows, one labeled "3 1/8\" and the other "3 1/4\".
- Bottom Section:** A horizontal line with four circles below it, each containing a Greek letter phi ( $\phi$ ). Below these are two vertical dimension lines with arrows, one labeled "3 1/8\" and the other "3 1/4\".
- Right Side:** A vertical line on the right side with a label "6' PLATE" next to it.
- Bottom Right:** A handwritten note "S.S. 3 1/2\" 7/16 2 1/2\"".
- Far Bottom:** A handwritten note "6' ST 2 1/2\"".

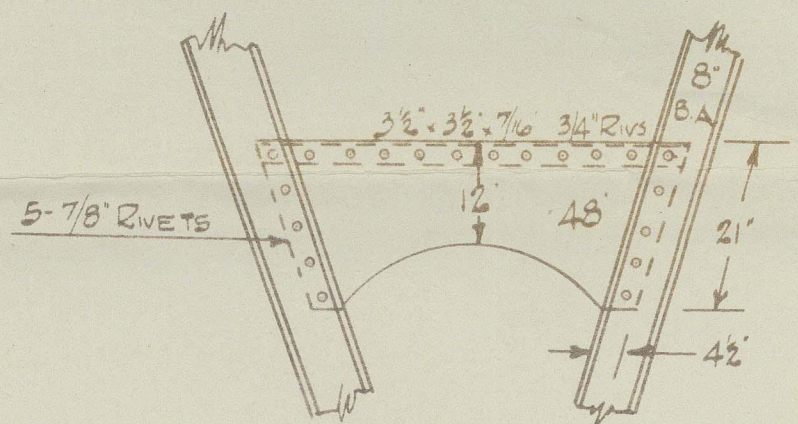
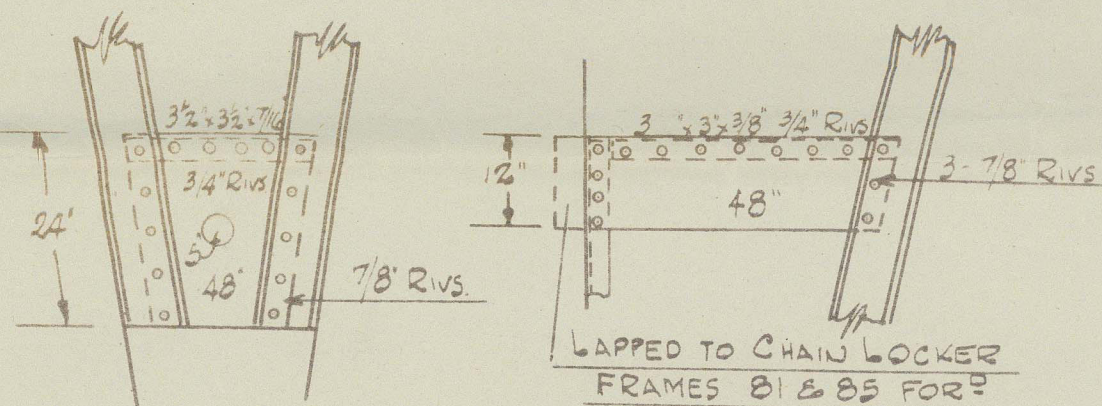
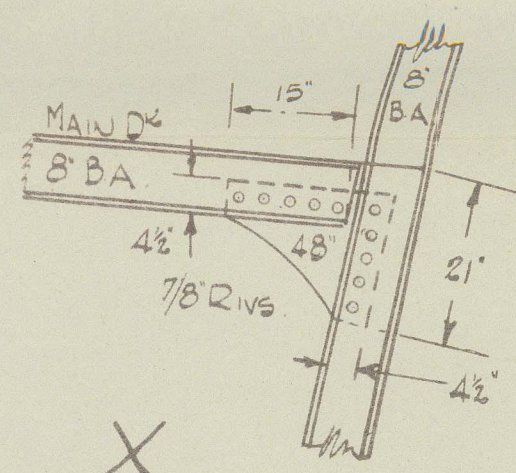


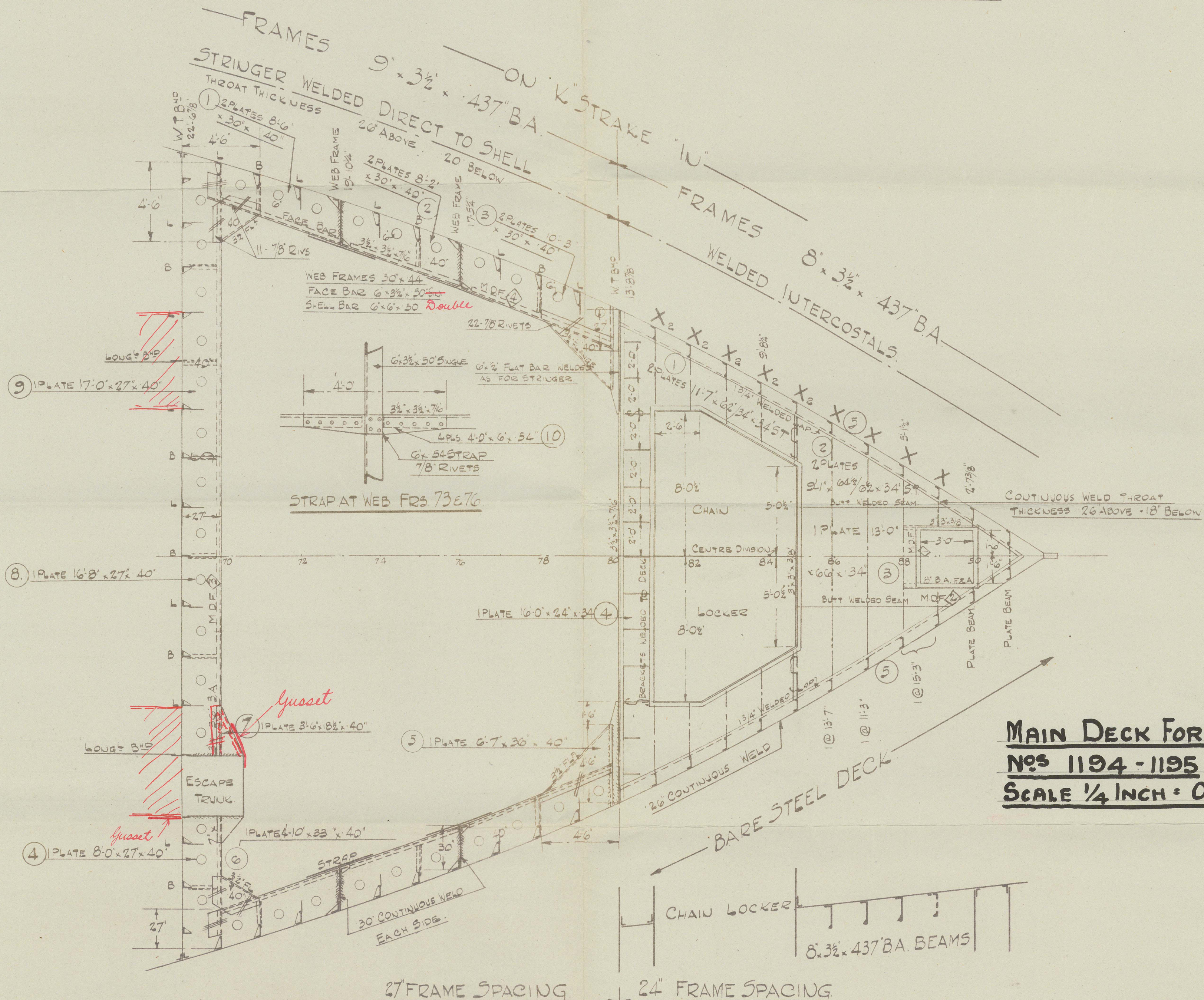
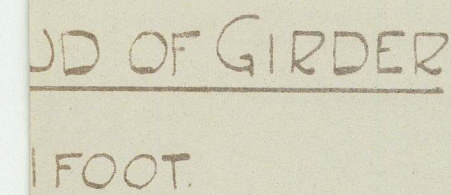
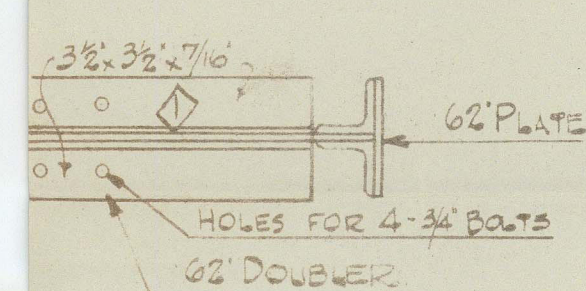
PLATE BEAM FR. 90 FOR<sup>D</sup>



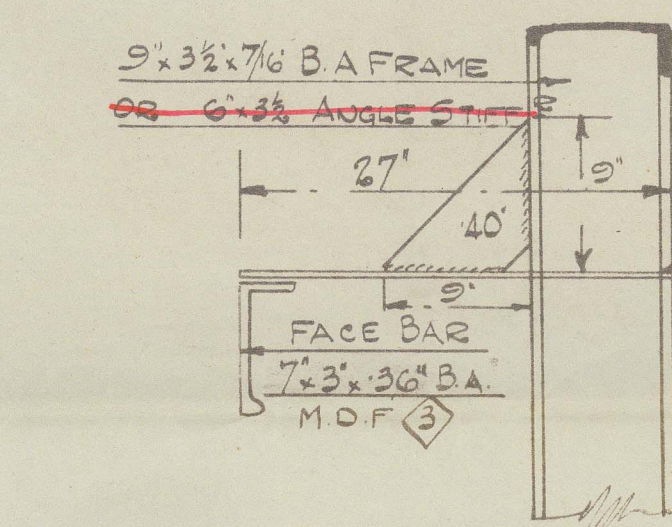
FRAME 91 FOR?



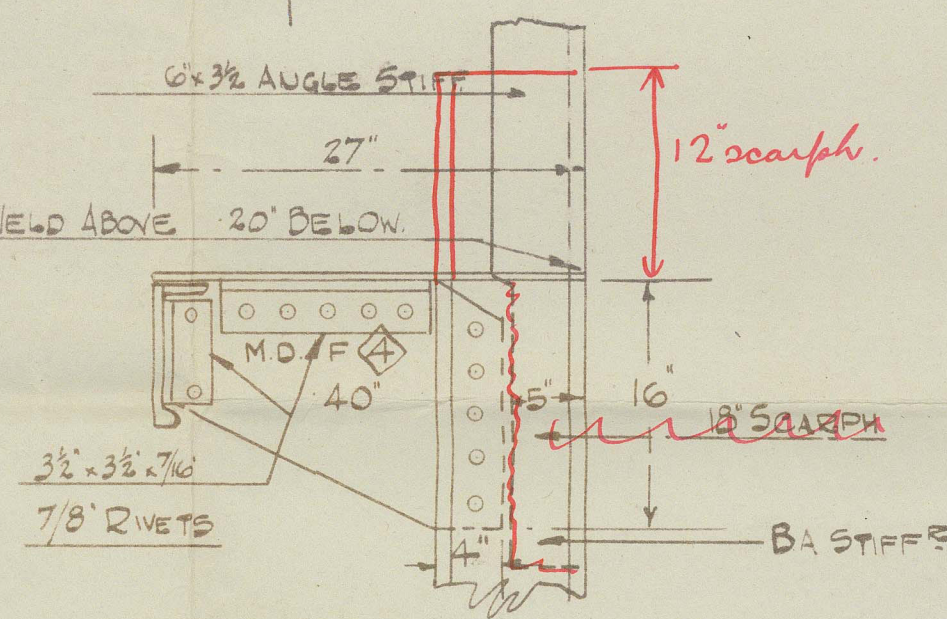
X<sub>2</sub>  
SEE "FORE END FRAMING"



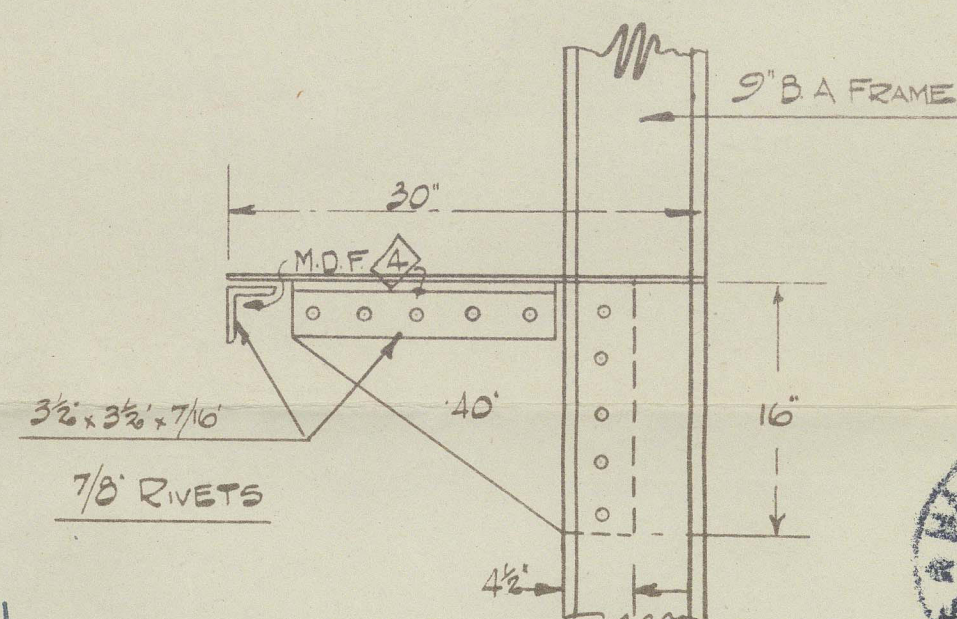
MAIN DECK FORWARD  
NOS 1194 - 1195  
SCALE  $\frac{1}{4}$  INCH = ONE FOOT.



STRINGER BRACKETS MARKED "L"



STRINGER BRACKET MARKED 'B'



BRACKETS AT SHELL MARKED B

Lloyds  
S. 130



© 2021

Lloyd's Register  
Foundation

004573-004578-0177



~~27~~

13

HARLAND & WOLFF LTD  
BELFAST

No. S. 1194 5

TITLE Main Deck

Forward

DATE APPROVED 12.12.44

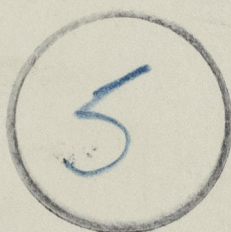
*S.P.*



1194 Beefast Report No 13626 - Norway

1195

13662 - Norway



© 2021

Lloyd's Register  
Foundation

004573-004578-0117



004573-004578-0177

HW 11/94 5-  
man deck forward

004573-004578-0177



© 2021

Lloyd's Register  
Foundation