

No 484

STREAMLINE RUDDER

SCALE 1" = 1 FOOT

DETAILS AS INDICATED

RUDDER STOCK — BEST QUALITY FORGING

RUDDER FRAME — BEST QUALITY STEEL CASTING

APPROX. WT. OF RUDDER FRAME EXCLUDING PINTLES =

APPROX. WT. OF RUDDER STOCK =



DIMENSIONS — 425'-0" B.P. x 57'-3 1/2" M.D. x 29'-0" M.D. to UPP. CK. x 38'-0" M.D. to SHEET CK.

TO CLASS 100 A-1 WITH FREEBOARD.

LOD DRAFT 25'-2 1/2" M.D.

RUDDER AREA 126 sq ft

CR. OF GRAVITY FROM G. OF PINTLES = 4'-04"

A x D = 631

RULE STOCK 1 1/2" DIA FOR A SERVICE SPEED OF 12 KNOTS

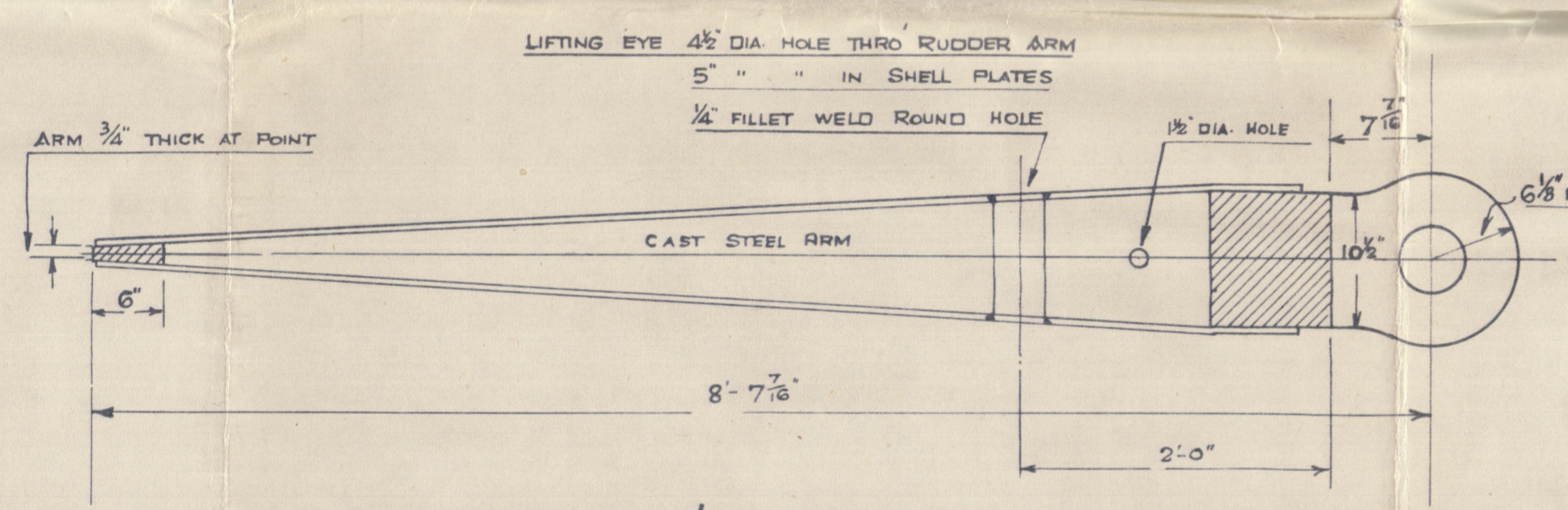
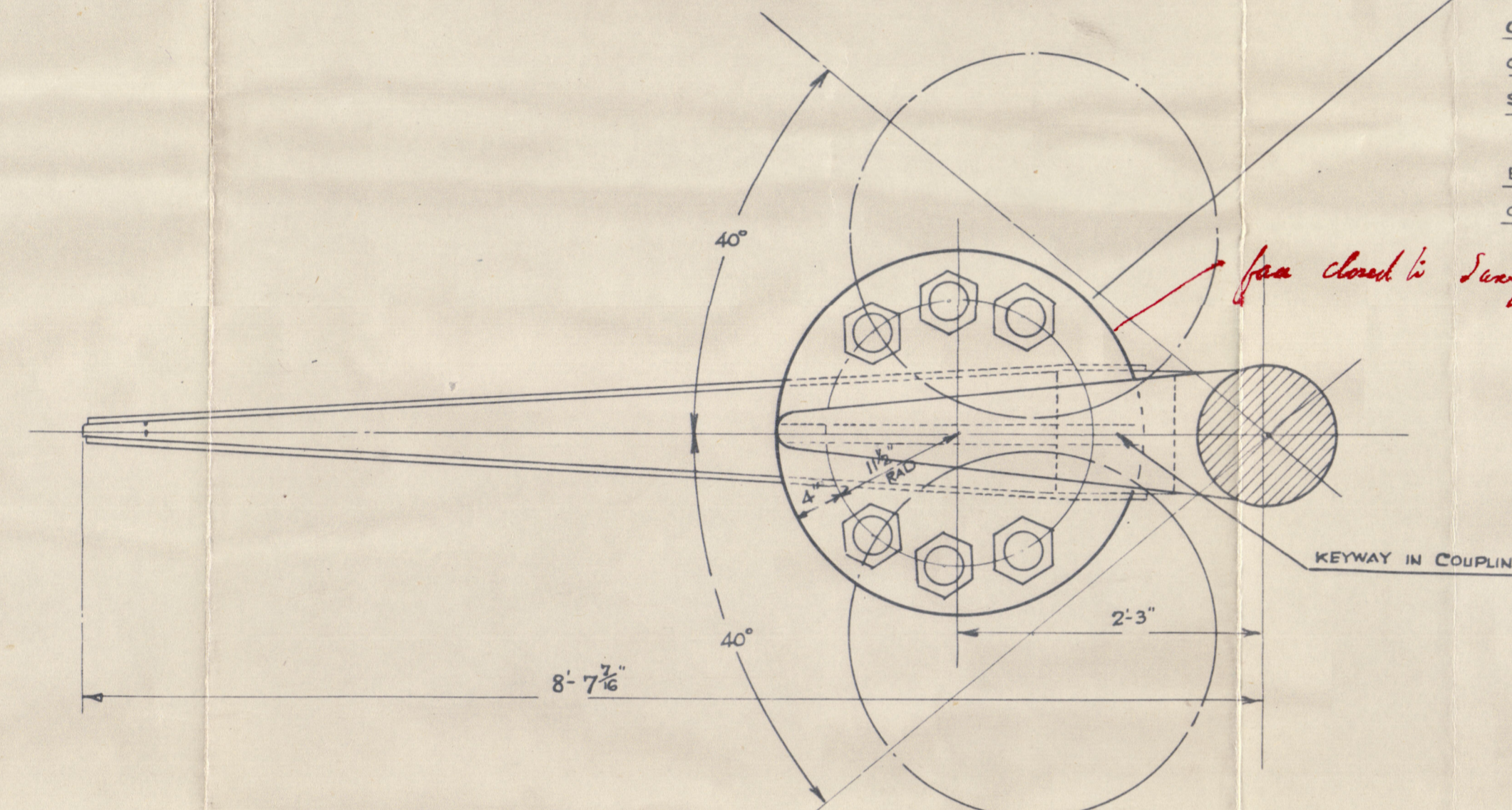
KEYWAYS ETC. TO BE CUT IN RUDDER STOCK TO PARTICULARS GIVEN LATER.

RUDDER STOCK TO BE ACCURATELY TURNED.

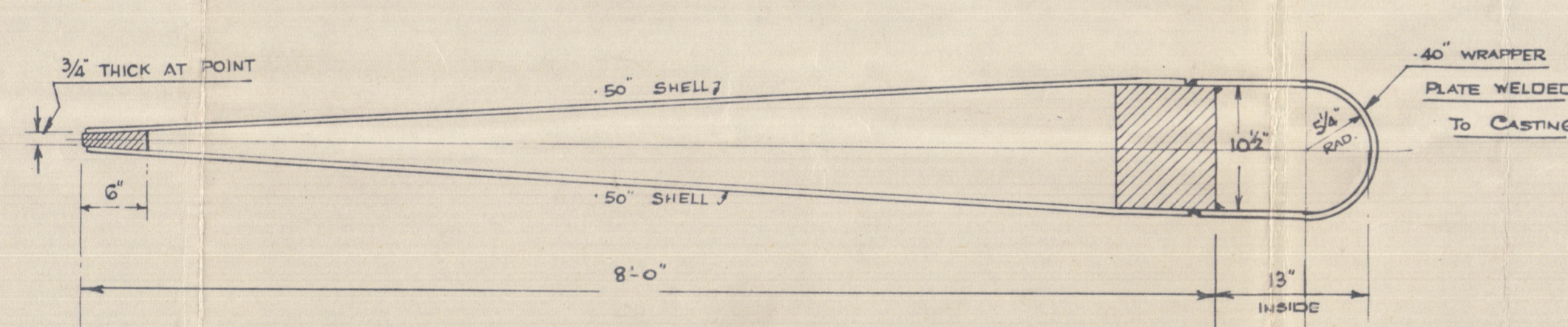
RUDDER COUPLING

COUPLING 2'-7" DIA.
COUPLING FLANGES 3 3/8" THICK
SIX - 3 3/8" DIA STEEL FITTED BOLTS EFFICIENTLY
LOCKED WITH COTTER PINS.
BOLTS 23" P.C.D.
CARE IS TO BE TAKEN THAT NUTS DO NOT FOUL

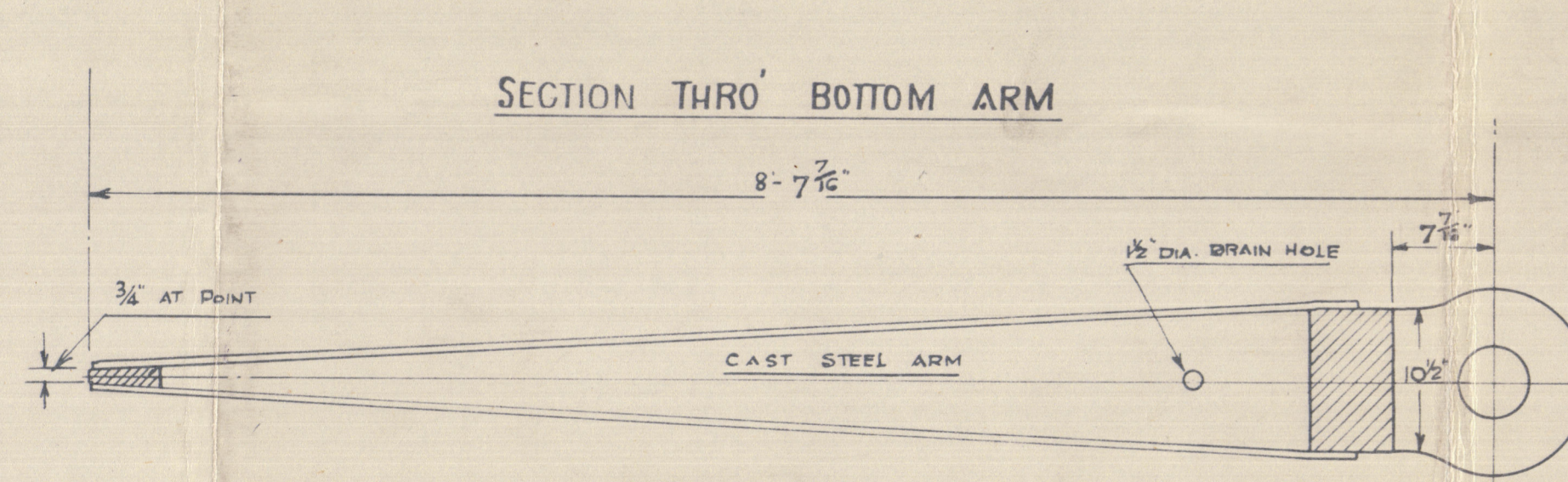
from closed to Seng's Satisfaction



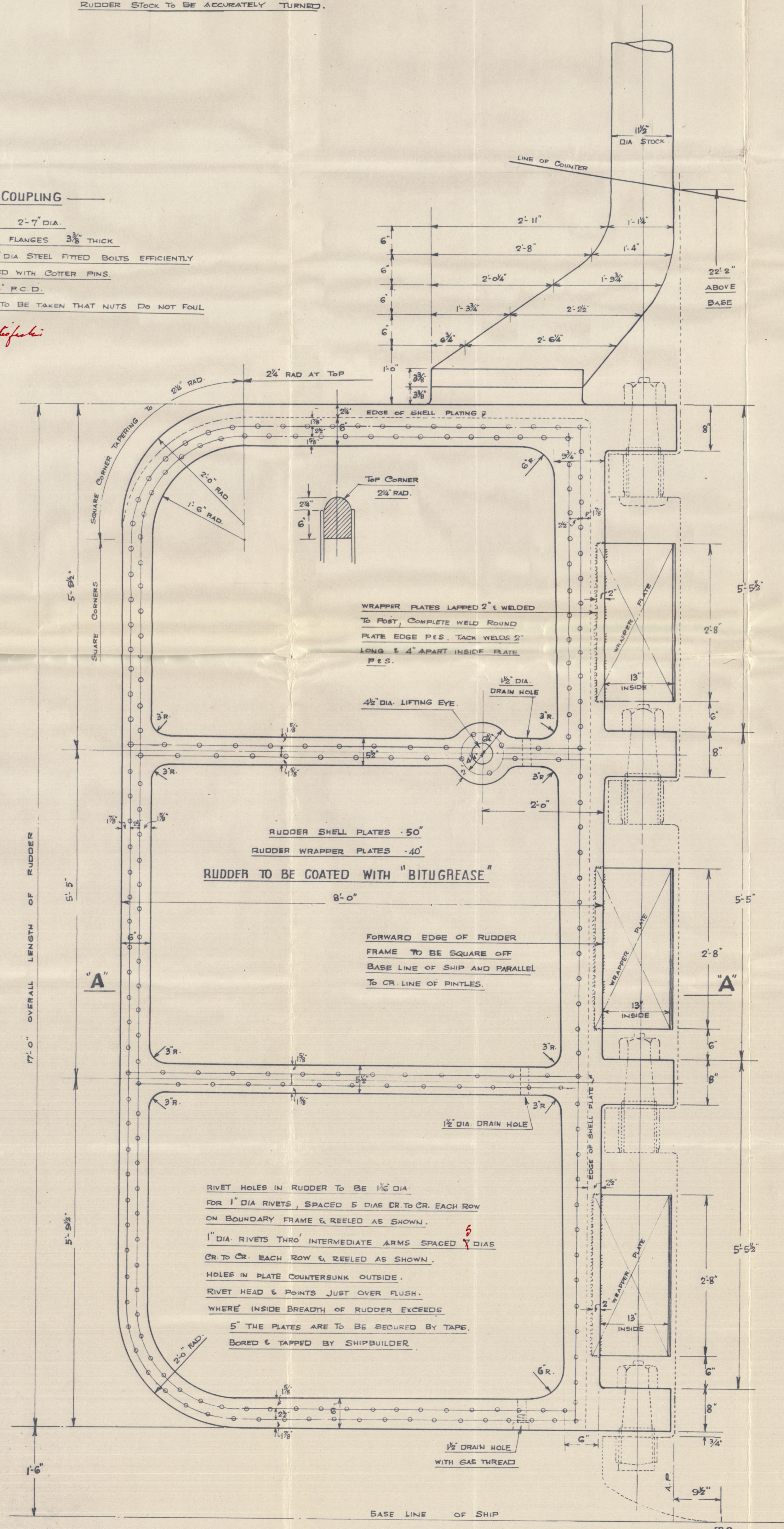
SECTION THRO' INTERMEDIATE ARM



SECTION THRO' "AA"

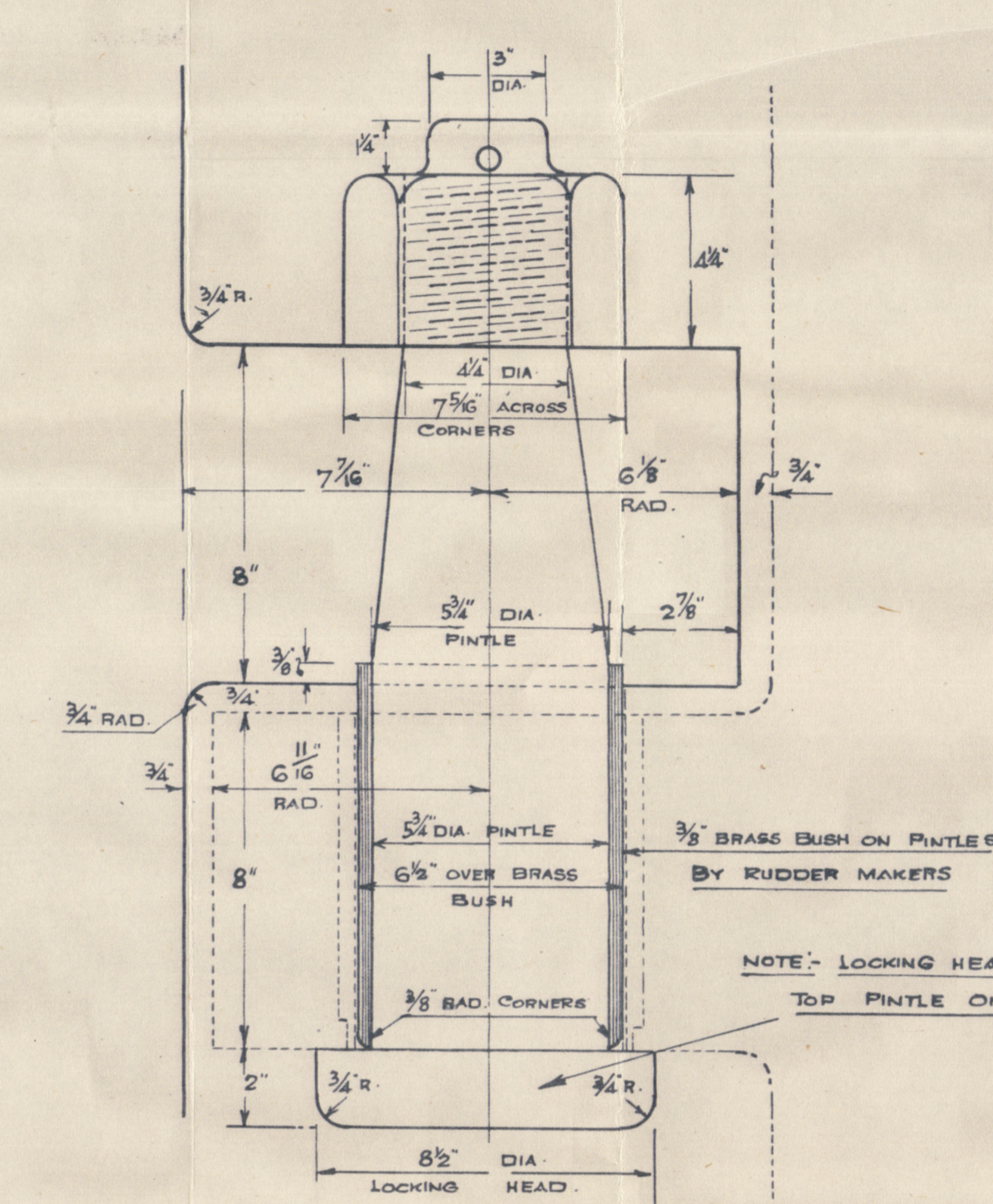


SECTION THRO' BOTTOM ARM



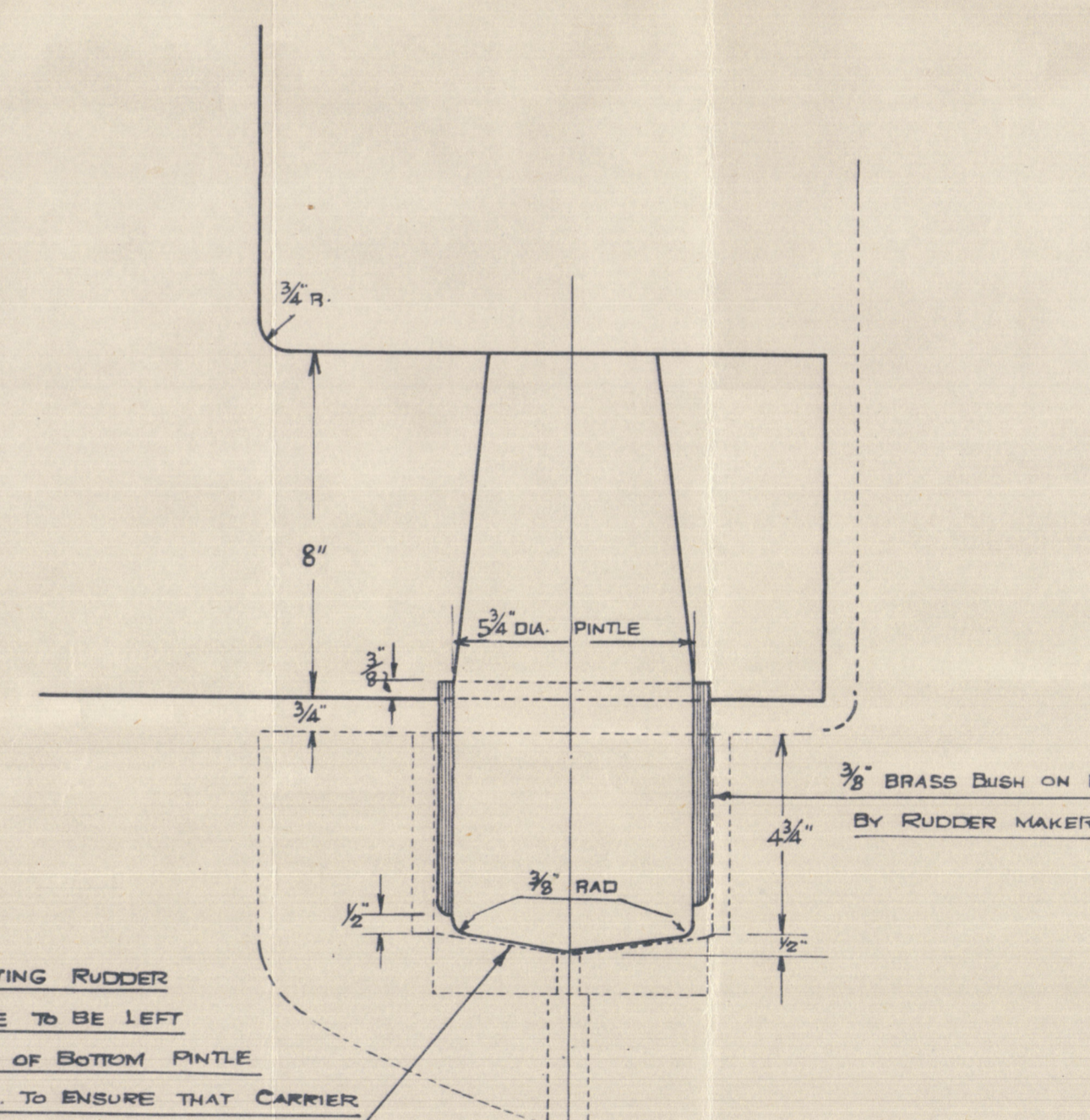
NOTE—SPECIAL CARE IS TO BE TAKEN IN THE CONSTRUCTION OF THE RUDDER AND ALL WORK TO BE TO LLOYDS REQUIREMENTS. RUDDER TO BE WATERTIGHT

NOTE: ALL PINTLES TO BE SUPPLIED COMPLETE BY RUDDER MAKERS. PINTLES TO BE OF STEEL MADE & EFFICIENTLY FITTED AS PER DETAILS. BRASS BUSHES MUST BE TURNED IN ONE PIECE AND PROPERLY SHOWN ON PINTLES.



DETAIL OF ALL RUDDER GUDGEONS & PINTLES (EXCEPT BOTTOM PINTLE)

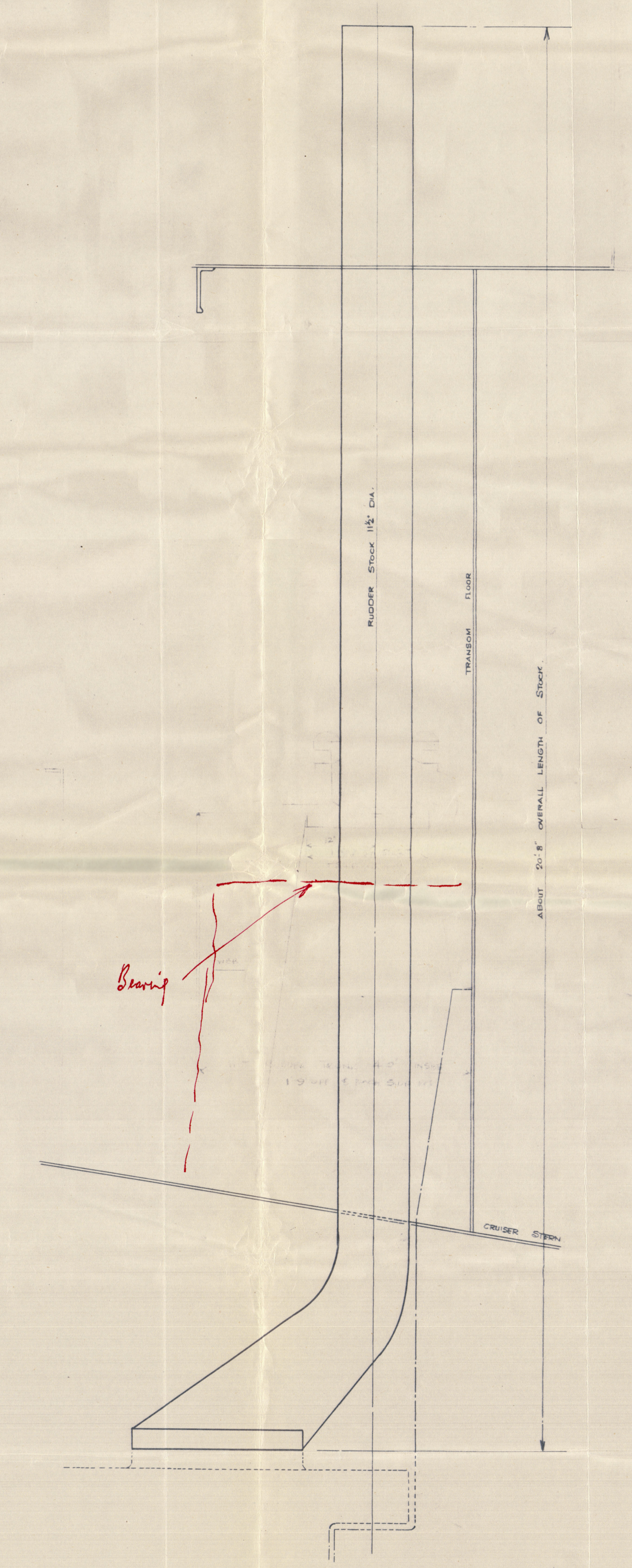
SCALE 1/4 FULL SIZE



DETAIL OF BOTTOM GUDGEON & BEARING PINTLE

DETAILS NOT INDICATED TO BE SIMILAR TO ABOVE

SCALE 1/4 FULL SIZE



ELEVATION OF RUDDER STOCK

APPROVED LLOYD'S REGISTER OF SHIPPING

James M. Clark 4/13/18



004662-004665-0022

Wm Hamilton & Co. Ltd.

Land No 484



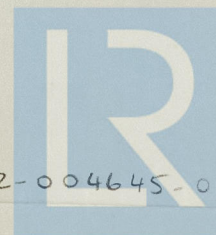
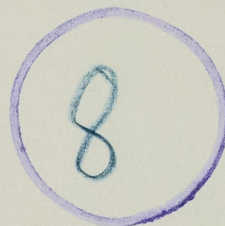
Streamlined Rudder

1/2 TREGLISSON



GREENOCK F.A. REPORT N° 24090

RECORDS DEPT.
LONDON



© 2020

Lloyd's Register
Foundation

004642-004645-0022