

# Lloyd's Register of Shipping.

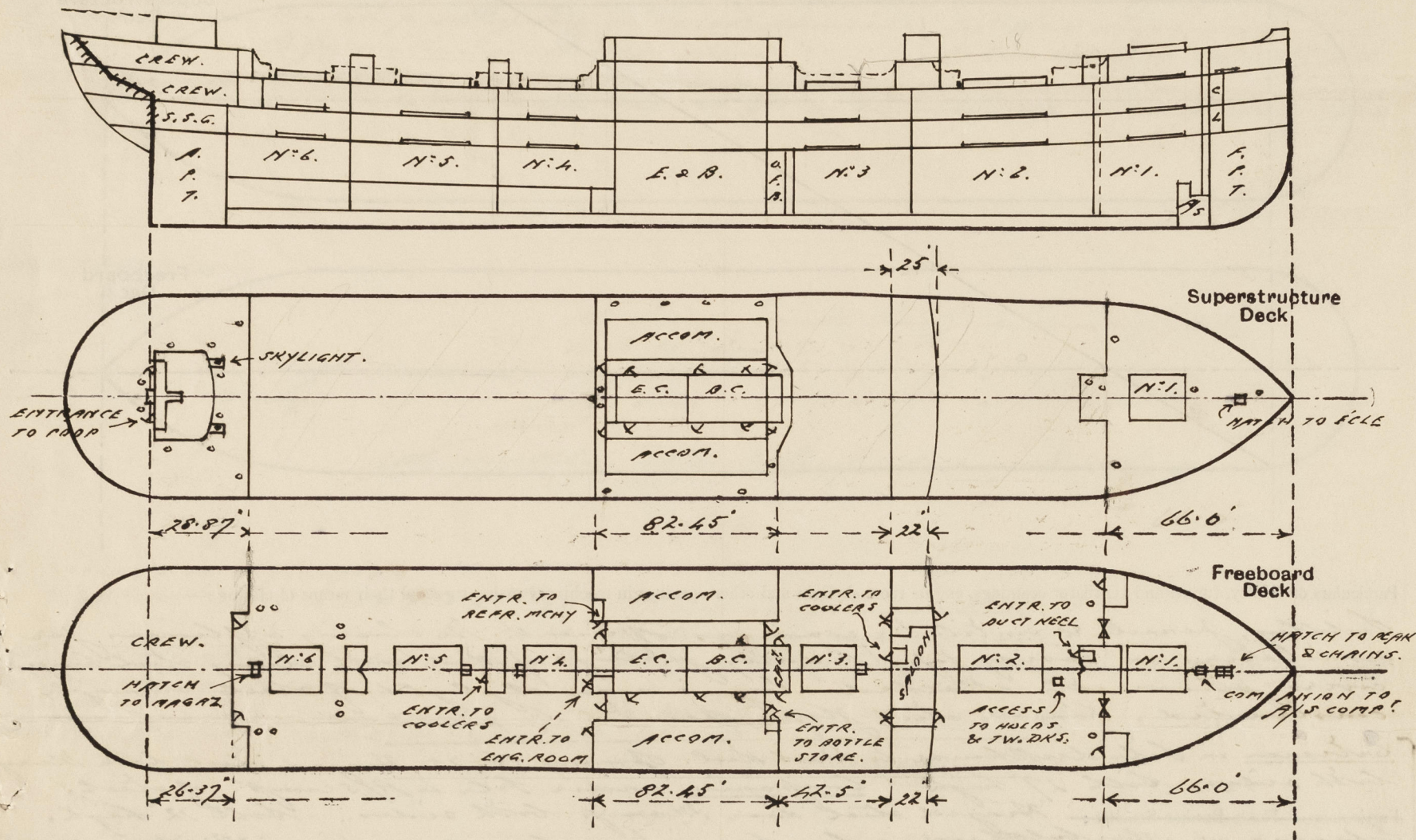
## SURVEYS FOR FREEBOARD.

(CONDITIONS OF ASSIGNMENT.) *Grk. Ref. W. 22446.*Ship's Name *"CLAN URQUHART"*Port of Survey *Greenock*

Official Number

Surveyor's Signature *H. L. Swinton*Nationality and Port of Registry *British, Glasgow.*Date of Survey *While Building.* 2-10-43.

Disposition and dimensions of superstructures, trunks, deckhouses and machinery casings to be inserted in the diagrams and tabular statement:—

SEE SKETCH OF ERECTIONS  
ON PAGE 4.

Particulars of Superstructures, Trunks, Casings, Deckhouses.

	Coaming	Plating	Stiffeners	Spacing	End Attachments of Stiffeners	Size of Openings	Height of Sills	Height of Casings
Poop Bulkhead ...	—	.34"	ANG. 6 x 3 x .46.	27 1/4" - 30"	NONE.	57 x 24	22"	8'0"
<del>Raised Quarter Deck Bulkhead</del> ...	✓	✓	✓	✓	✓	54 x 46 60 x 36 60 x 31	25 19 18	8'0"
Bridge, After Bulkhead } MIDSHIP	18 x 32	.25	3 x 3 x 30	27"	WELDED.	57 x 23	21	8'0"
Bridge, Forward Bulkhead } BRIDGE	18 x 32	.25	4 x 3 x 32	27"	WELDED.	60 x 36 60 x 33	19 21	8'0"
Forecastle Bulkhead ...	—	.26	3 x 3 x 30	24"	NONE.	62 x 24 60 x 43	19 21	8'0"
<del>Trunk, Aft BULK.</del> } FORWARD	—	.30	3 x 3 x 30	27 - 33	WELDED.	60 x 48 60 x 25	18 18	8'6"
<del>Trunk, Forward BULK.</del> } BRIDGE	36 x 40	.38	7 x 3 1/2 x 42	17 - 30	WELDED.	63 x 36	18	8'6"
Exposed Machinery Casings on Freeboard or Raised Quarter Deck ...	18 x 32	.25	3 x 3 x 30	24 - 33	NONE.	54 x 46	25	8'0"
Exposed Machinery Casings on Superstructure Decks BRIDGE DK.	15 x 34	.25	3 x 3 x 30	33	BRIS AT TOP.	60 x 24	15	8'0"
Machinery Casings within Superstructures not fitted with Class I Closing Appliances ON FREEBOARD.	15 x 34	.28	3 x 3 x 30	33	NONE.	63 x 24	15	8'0"
Deckhouses on Flush Deck Ships ...	✓	✓	✓	✓	✓	✓	✓	✓

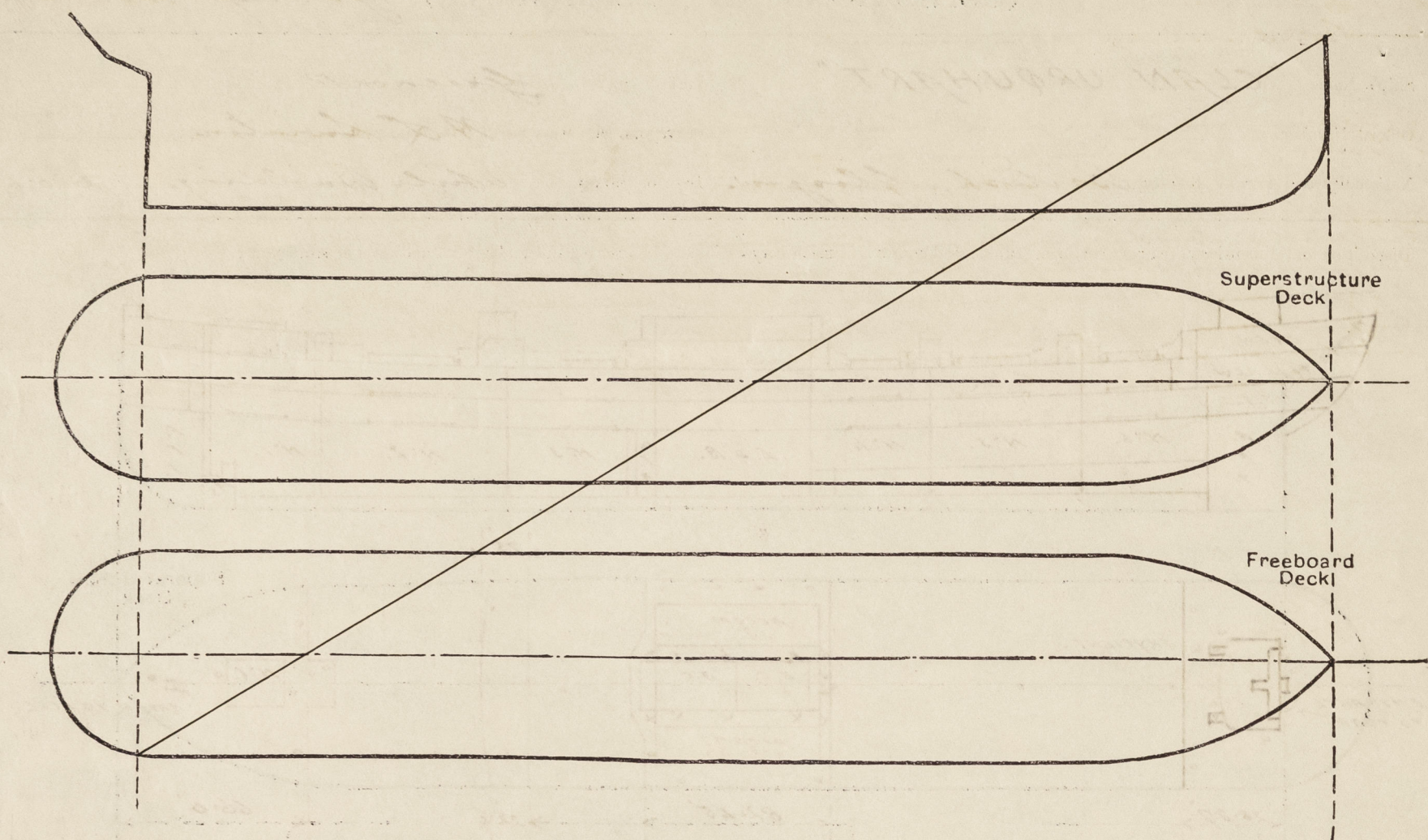
Particulars of Closing Appliances (state if capable of being manipulated from both sides).

Poop Bulkhead ...	2 Hinged steel doors, Manip. both sides.
<del>Raised Quarter Deck Bulkhead</del> ...	✓
Bridge, After Bulkhead } MIDSHIP	2 Hinged steel doors & 3 hinged steel W.T. doors, Manip. both sides.
Bridge, Forward Bulkhead } BRIDGE	2 Hinged steel W.T. doors, Manip. both sides.
Forecastle Bulkhead ...	1 Hinged steel door
Exposed Machinery Casings on Freeboard or Raised Quarter Deck ...	2 Hinged stl. doors, manip. both sides. 2 openings with 3" stern boards in right chs. full height.
Exposed Machinery Casings on Superstructure Decks BRIDGE DK.	1 Hinged steel door, Manip. both sides. (Mid. bridge aft bulk.)
Machinery Casings within Superstructures not fitted with Class I Closing Appliances ON FREEBOARD.	6 Hinged steel doors, Manip. both sides.
FORWARD BRIDGE, AFT BRIDGE, FORWARD BRIDGE, AFT BRIDGE.	4 Hinged steel doors, Manip. both sides.
Deckhouses on Flush Deck Ships ...	2 Hinged steel doors & 1 hinged stl. W.T. door, Manip. both sides.
FORWARD BRIDGE, FORWARD BRIDGE.	2 Hinged steel W.T. doors, Manip. both sides.



# PARTICULARS OF PROTECTION TO OPENINGS, ETC.

The following diagrams should be used to indicate the positions of cargo and coaling hatchways, gangway, cargo and coaling ports, ventilators, companionways, etc., which would affect the seaworthiness of the ship:—



Particulars of fiddle, funnel and ventilator coamings, engine room skylight and other openings in machinery casing tops and their means of closing:—

Fiddle, funnel, & ventilator coamings efficient. No closing appliances for ventilators on casing top. Fiddle, gaskets fitted with strong steel hinged covers permanently attached. Engine room skylight of steel, strongly constructed, hinged steel flap operated by quadrant, no cover provided.

Entrance in fore deckhouse to Deck Rail. Opening 53x25. Hinged steel door Manop. both sides. Sill 27" high. Companion under fore to aft compartment of steel.

Particulars of Flush Bulker Scuttles:— Hinged steel door Manop. both sides. Sill 12" high. Entrance at after bulkhose, saloon house to cooler room in turner deck. Opening 60x25. Hinged steel W.T. door Manop. both sides. Sill 18" high.

Entrance at forward bulkhose Mastship bridge, to open bottle store in turner deck. Opening 56x24. Hinged steel door Manop. both sides. Sill 22" high.

Particulars of Companionways:— Entrance at after bulkhose Mastship bridge to Refrig. Manop. both sides. Sill 21" high. Entrance at masthouse to cooler room in turner deck. Opening 60x28. Hinged steel W.T. door Manop. both sides. Sill 18" high.

Entrance at prop deckhouse to crew space in prop. Opening (2) 63x24. Hinged steel doors Manop. both sides. Sills 16" high.

Particulars of Ventilators in exposed positions on freeboard and superstructure decks:—

1 on fore d.d. 12 dia. Com. 36x34 to fore peak.	2 on aft decking bridge. 15 dia. 30x34 to crew.
1 " " 20 " " 36x40 to turner d.d.	1 " " 9 " " 19x32 " "
2 " " 15 " " 36x36 to hold.	2 on bridge d.d. 15 dia. 30x32 to kitchen.
1 " " 8 " " 36x30 to D.O. Room.	1 " " 8 " " 30x30 to hold.
1 " " 9 " " 36x32 to deck rail.	1 " " 10 " " 27x32 to hold.
2 on upper " 10 " " 36x32 to W.T. Luv. d.d.	2 " " 12 " " 27x34 to hold.
2 " " 16 1/2 " " 36x38 to W.6 hold.	2 " " 10 " " 30x32 to hold.
2 " " 16 1/2 " " 36x38 to hold.	1 " " 14 " " 29x36 to turner d.d.
4 " " 12 " " 36x34 " " Luv. d.d.	1 " " 6 " " 28x30 to P.O.
3 on Prop " 8 " " 28x30 to crew.	
4 " " 9 " " 30x32 " "	
2 " " 13 " " 12x34 (on skylight top).	
1 " " 14 " " 30x36 to tunnel bulk.	
1 " " 9 " " 30x32 to S. gear.	

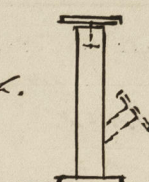
Particulars of Air Pipes in exposed positions on freeboard, raised quarter, or superstructure decks:—

1 on fore d.d. 4 dia. 19 high to fore peak.	
1 " " 4 " " 19 " " to W.T. D.B. tank	
6 on saloon house top 4 dia. 18 high	
2 on Prop d.d. 3 " " 18 " "	
30 on upper d.d. 4 " " 30 " "	
17 " " 3 " " 30 " "	
2 " " 2 " " 30 " "	

Openings of air pipes to O.T. & S.W. tanks fitted with double gauge, remainder fitted with canvas cover.

Particulars of Gangway Cargos and Coaling Ports:—

Air change Vents to Cooler Rooms.  
6 on upper deck in saloon alleyway } 6 dia. 36 high.  
4 " " aft.  
12 " " main top.  
6 " " saloon house top.  
Fitted with W.T. screw down caps.



Exhaust Vents fitted with 2 1/2 dia. construction to take fan. Blank flange fitted.

Particulars of Scuppers and Sanitary Discharge Pipes:—

Scuppers from upper deck clear of erections formed this stringer any above d.d.  
1. Scupper p.o. from recess in upper d.d. at bridge front led this ships side below upper d.d. with stern valve.  
Scuppers & discharges from lavins & W.T. in prop. } led this ships side below up. d.d. with S.V.  
Scuppers & discharges from saloon house both d.d. }  
Scupper from Mastship alleyway on up. d.d. Port side }  
Scupper from Mastship alleyway on up. d.d. Star side } led this ships side below second d.d. with S.V.  
Scupper from Refrig. store in Bridge space "  
Discharges from W.C. in saloon house & from captains W.C. & bath, led this ships side above up. d.d. with stern valve.

Particulars of Side Scuttles:—

In Prop. 10" dia. with hinged deadlights.  
In Bridge 12" & 15" dia. " "  
In crew space off turner d.d. 10 dia. " "  
In Refrig. Manop. 10 dia. " "

All scuttles of substantial construction

PARTICULARS OF SKYLIGHTS:—

On Prop d.d. 2 @ 4'0" x 2'3" x 15/16 to crew accommodation.  
1 @ 4'0" x 2'0" x 15/16 to steering compartment.  
All of steel strongly constructed, hinged steel flaps operated by quadrant. No covers provided.

Vertical distance of Sill of lowest Side Scuttle above top of keel 38' 5 1/2".

Particulars of Guard Rails:—

On Prop d.d. 3'6" high. 3 rods. Stanchions spaced about 4'6" apart.  
On Bridge d.d. 3'6" " 3 " 5'6" "  
On fore d.d. 3'6" " 3 " 5'0" "  
On upper d.d. about W.T. 2'4" 5 & 6 heights, 3'9" high 3 rods, stanchions spaced about 4'6" apart. (Stanchions 13 above d.d.) Elsewhere on upper d.d. clear of erections steel bulwark 3'9" high strongly constructed & effie. supported.

Particulars of Gangways, Lifelines, etc.:—

Fittings for lifelines fitted on port & starboard sides, & lifelines provided.

## Particulars of Freeing Arrangements.

	Length of Bulwark	Height of Bulwark	Size of Freeing Ports	Number each side	Area each side	Rule area each side
After Well AHEADPT... N.3 HATCHWAY.	42'6"	3'9"	2'9" x 1'6"	2.	8 sq. ft.	5.38 sq. ft.
Forward Well	...	...	...	...	...	...

State position of each freeing port ... (After Well:— 5'9" x 27'6" from Bridge front bulwark. (F. and A. position and height above deck edge) Forward Well:— 15' above deck edge.

State whether the freeing ports are fitted with shutters, bars, or rails, and give particulars of such:— 3 rods fitted horizontally.

Additional area where sheer is less than standard.



# PARTICULARS OF PROTECTION TO OPENINGS, ETC.

HATCHWAYS ON FREEBOARD AND SUPERSTRUCTURE DECKS.									
ON FREEBOARD DECK.									
Description of Hatchway			N°1.	N°2.	N°3.	N°4.	N°5.	N°6.	
Dimensions of Hatchway			20'3" x 18'0"	45'3" x 21'0"	22'0" x 21'0"	22'0" x 21'0"	22'0" x 21'0"	22'0" x 21'0"	
COAMINGS	{	Height above Deck	30"	30"	30"	30"	30"	32"	
		Thickness	44	44	44	44	44	44	
		Sides	44	44	44	44	44	44	
		Ends	44	44	44	44	44	44	
Stiffeners			12 x 3 1/2 x 54	9 x 3 1/2 x 38	11 x 3 1/2 x 46	SEE BELOW.			
Brackets, Stays			4	2.	2.	3.	2.		
HATCH BEAMS	{	Number	3.	9.	3.	3.	5	3.	
		Spacing	5'0 1/4	4'7 1/2	5'6	5'6	5'6	5'6	
		Scantling and Sketch	16 x 36	4 x 3 x 44	10 7/8 x 40	3 x 3 x 34	6 x 3 x 42		
		Bearing Surface	4	3 1/2	3 1/2	3 1/2	3 1/2	4	
FORE AND AFTERS	{	Number	N°6 HATCH COAMING.			N°1 HATCH COAMING.			
		Spacing	12 x 3 1/2 x 45			12 x 3 1/2 x 44			
		Unsupported Lengths	B.A.			B.A.			
		Scantling and Sketch	10 x 3 1/2 x 44			12 x 3 1/2 x 44			
Bearing Surface			OK.			OK.			
HATCH COVERS	{	Material	W.P.	W.P.	W.P.	W.P.	W.P.	W.P.	
		Thickness	3	3	3	3	3	3	
		How fitted	F.O.A.	F.O.A.	F.O.A.	F.O.A.	F.O.A.	F.O.A.	
		Bearing Surface	3	3	3	3	3	3	
Spacing of Cleats			24	24	24	24	24	24	
Number of Tarpaulins			1.	2.	2.	2.	2.	2.	
*Are wood fore and afters steel shod at all bearing surfaces? YES.									
Are battens and wedges efficient and in good condition? YES.									
Are tarpaulins in good condition and in accordance with rule requirements? YES.									
Are lashings provided in accordance with rule requirements? YES.									
Hatch on up. dk. under sole to chains & jirapack store 6'0" x 4'5" Com. 9' x 8 1/2" x 10' B.A. Rest 3'2" Cos. 2'2" Cleats 21' off. 1 Tarpaulin.									
Hatch on up. dk. aft. to Magazine 2'0" x 2'10" Com. 25' x 44" Steel W.T. cover 40" secured by toggles. Access hatches on up. dk. to insulated lower decks. W.L. 1'10" x 2'0" Com. 30' x 44" W.L. 1'7" x 2'4" 22' x 44" W.L. 1'7" x 2'0" 30' x 44" W.L. 1'10" x 2'3" 30' x 44" Steel W.T. hinged covers 44" secured by toggles. Hatch on sole dk. to store 1'8" x 2'2" Com. 9' x 8 1/2" x 44" B.A. Steel W.T. hinged cover 50" secured by toggles. Comp. jacking. W.L. 1' hatch on sole dk. R. Macanbing patent 20'3" x 18'0" Com. 30' x 50" Ends 44" Stiffener 7' x 40" B.P. with stays, sides & ends. Top plate 28" stiffener 8' x 8 1/2" x 3 1/2" x 3 1/2" 27' apart with 3 1/2" x 3 1/2" bar for 10'0" at centre. Cover side only 9' x 4' x 75.									

Particulars of any special features :-

Vessel to be classed 100 A1. with freeboard corresponding to a summer draught of 29'1" moulded. ✓

Hatch beams in N° 1 & 6 cargo hatchways of simple sliding type. ✓

Hatch beams in N° 2-3-4-5 cargo hatchways insulated. ✓

Cocks open end steel bands fitted to covers on cargo hatchways. ✓

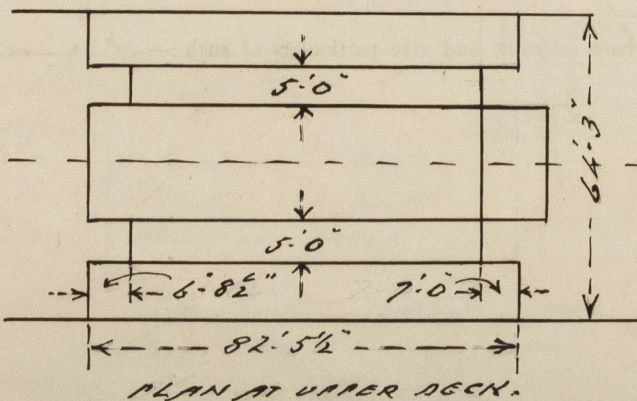
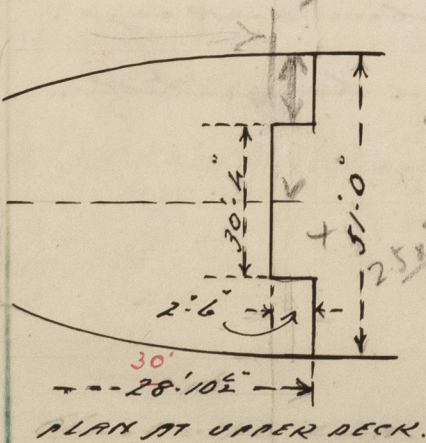
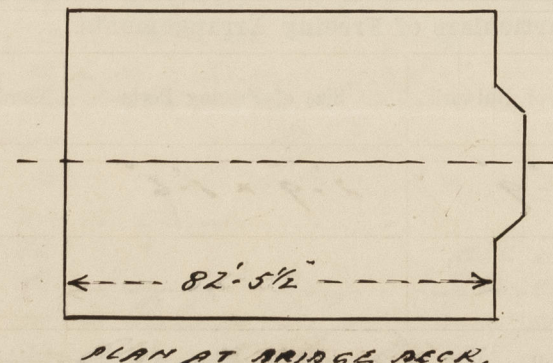
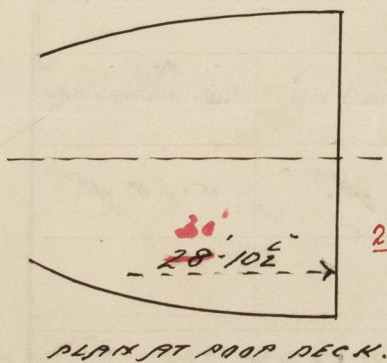
Each range of hatch covers on weather deck centrally secured by locking bar. ✓

Endorsement at first survey and at surveys for renewal of Certificate :-

The fittings and appliances are in accordance with the particulars shown on this form (or as now modified) and are in good condition.

POOP ON UPPER DECK.

MIDSHIP BRIDGE ON UPPER DECK.



$$\frac{7 \times 10}{64.25} = 1.09$$

$$\frac{6.7 \times 10}{64.25} = 1.04$$

$$\frac{2.13}{82.46} = 0.026$$

$$\frac{80.33}{82.46} = 0.974$$

© 2021

Lloyd's Register Foundation