

Lloyd's Register of Shipping.

SURVEYS FOR FREEBOARD.

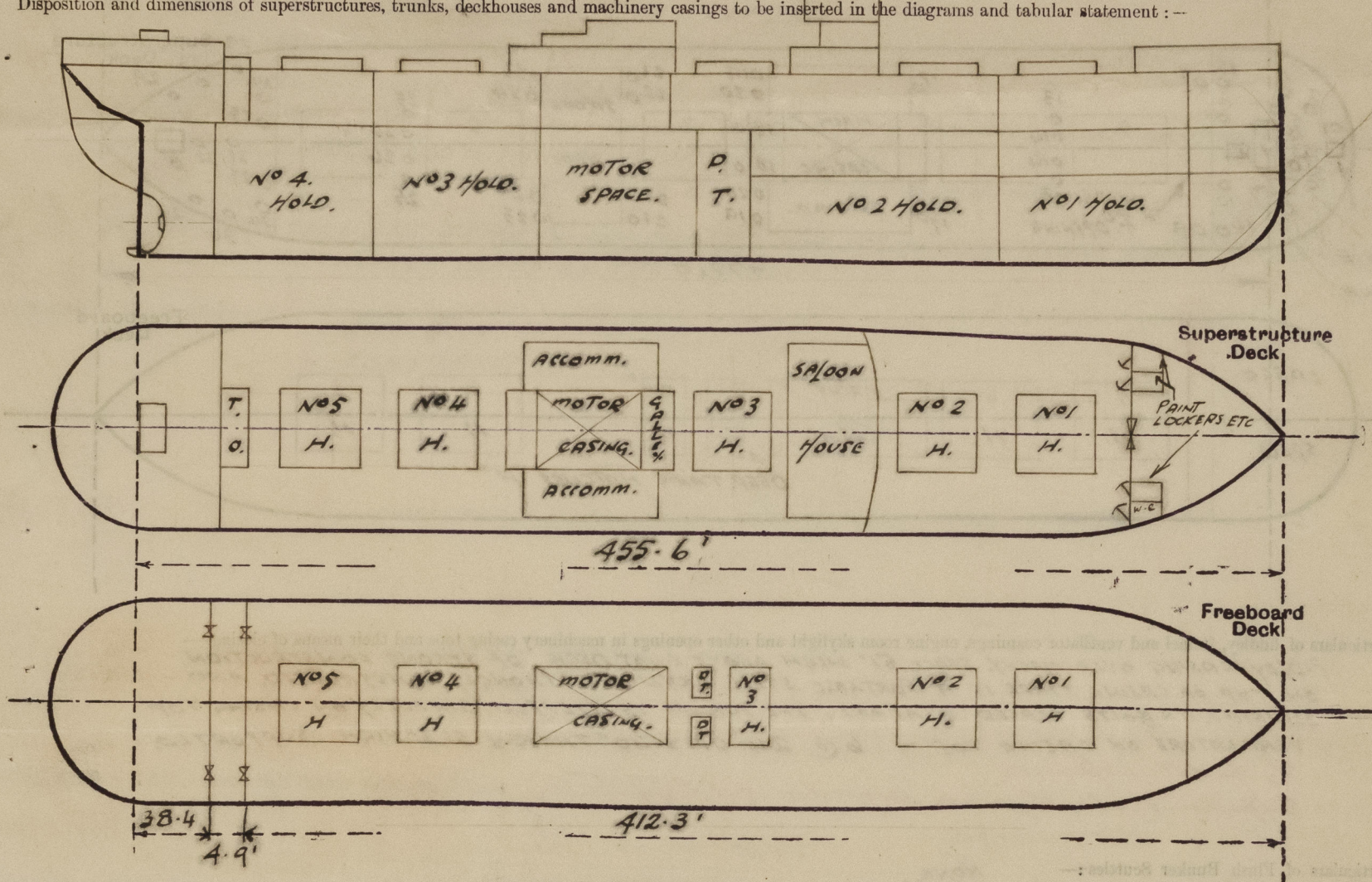
(CONDITIONS OF ASSIGNMENT.)

Index No. 39575
13144
 (For London Office only).

17 AUG 1948

Ship's Name TOMAR Port of Survey TRIESTE
 Official Number _____ Surveyor's Signature S. Rumsden
 Nationality and Port of Registry NORWEGIAN. TONSBERG. Date of Survey WHILST BUILDING.

Disposition and dimensions of superstructures, trunks, deckhouses and machinery casings to be inserted in the diagrams and tabular statement:—



Particulars of Superstructures, Trunks, Casings, Deckhouses.

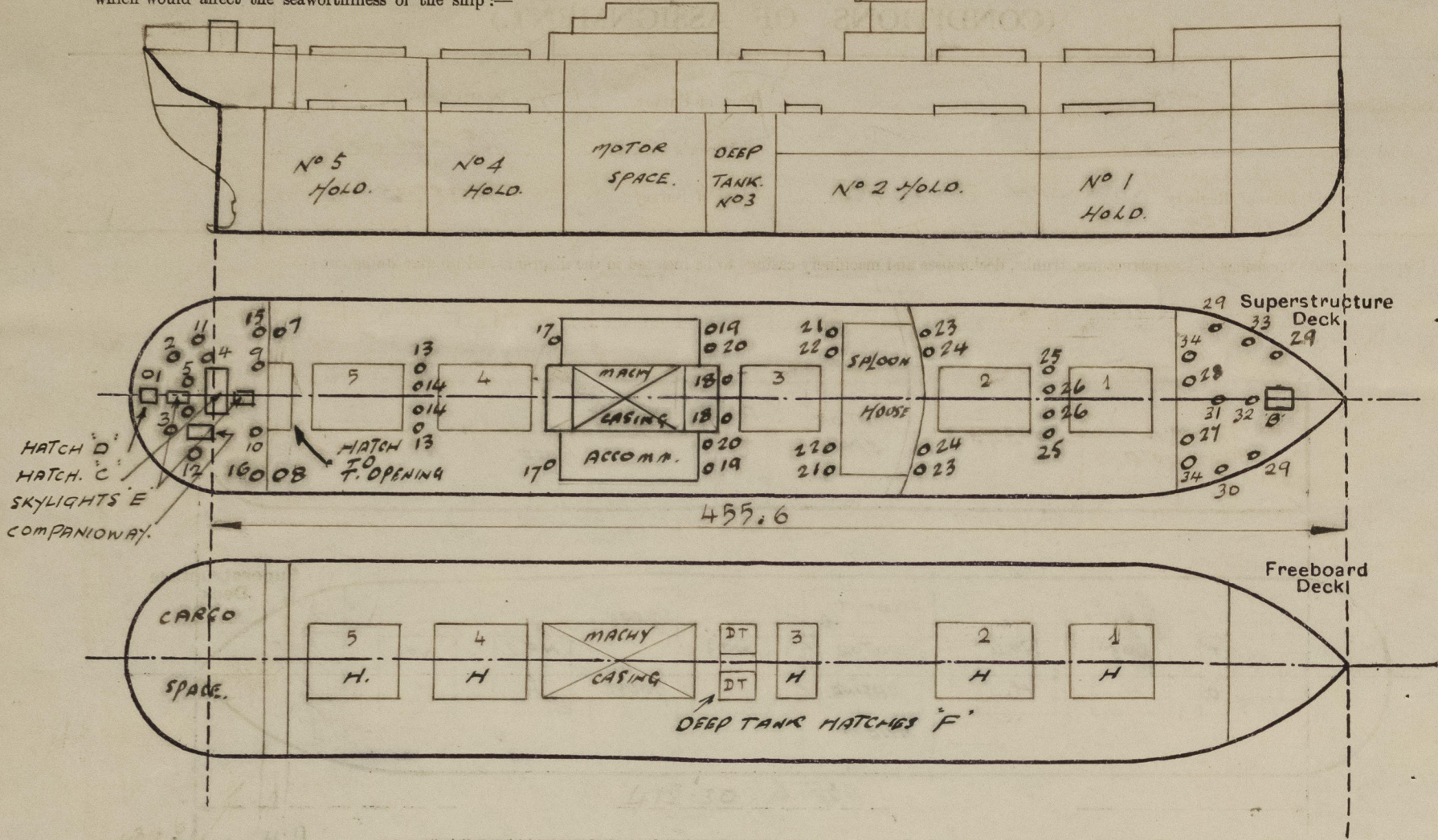
	Coaming m. m.	Plating m. m.	Stiffeners m. m.	Spacing m. m.	End Attachments of Stiffeners	Size of Openings	Height of Sills	Height of Casings
Poop Bulkhead ...	8.5 ✓	8.5 ✓	120x10 ✓ WELDED FLATS	780 ✓	WELDED T. 9 B. ✓	2 @ 3300x 1075	NONE	11'-8" ✓
Raised Quarter Deck Bulkhead ...								
Bridge, After Bulkhead ...	8.5 ✓	8.5 ✓	120x10 ✓ WELDED FLATS	780 ✓	WELDED T. 9 B. ✓	2 @ 3300x 1075	NONE	11'-8" ✓
Bridge, Forward Bulkhead ...								
Forecastle Bulkhead <i>m. 5' higher deck.</i> ...	8.5	8.5	120x80x8 T	600	WELDED AT TOP ONLY	1 @ 2050x 1280 4 @ 1500x630	NONE 460	7'-3" ✓
Trunk, Aft ...								
Trunk, Forward ...								
Exposed Machinery Casings on Free- board or Raised Quarter Decks ...			NONE					
Exposed Machinery Casings on Super- structure Decks ...			NOT EXPOSED.					
Machinery Casings within Superstruc- tures not fitted with Class I Closing Appliances ...	8	6.5	100x9 FLATS. E.W. AND 150x75x 9 T. AT 6, 69 73, 81, 83.89	450 m/m.	NONE AT BOTTOM CONTINUOUS AT TOP.	NONE	✓	12'-6" ✓
Deckhouses on Flush Deck Ships ...								

Particulars of Closing Appliances (state if capable of being manipulated from both sides).

Poop Bulkhead ...	2 OPENINGS CLOSED WITH SHIFTING BOARDS IN FULL HEIGHT CHANNELS ✓
Raised Quarter Deck Bulkhead ...	—
Bridge, After Bulkhead ...	2 OPENINGS CLOSED WITH SHIFTING BOARDS IN FULL HEIGHT CHANNELS ✓
Bridge, Forward Bulkhead ...	—
Forecastle Bulkhead <i>m. 5' higher deck.</i> ...	1 OPENING CLOSED WITH SHIFTING BOARDS IN FULL HEIGHT CHANNELS. ✓
Exposed Machinery Casings on Free- board or Raised Quarter Decks ...	2 HINGED STEEL W.T. DOORS. CAPABLE OF BEING OPERATED FROM BOTH SIDES ✓ 2 HINGED STEEL DOORS — CAPABLE OF BEING OPERATED FROM BOTH SIDES ✓
Exposed Machinery Casings on Super- structure Decks ...	—
Machinery Casings within Superstruc- tures not fitted with Class I Closing Appliances ...	NONE
Deckhouses on Flush Deck Ships ...	—

PARTICULARS OF PROTECTION TO OPENINGS, ETC.

The following diagrams should be used to indicate the positions of cargo and coaling hatchways, gangways, cargo and coaling ports, ventilators, companionways, etc., which would affect the seaworthiness of the ship:—



Particulars of fiddley, funnel and ventilator coamings, engine room skylight and other openings in machinery casing tops and their means of closing :—

blows of fiddley, funnel and ventilator casings, engine room skylight and other openings in machinery casing tops and their means of closing :-

FIDLEY CASING OVER MACH. SPACE 51" HIGH ABOVE BOAT DECK OF STRONG CONSTRUCTION - closing 2
ON TOP OF CASING THERE IS A PORTABLE STEEL SKYLIGHT, STRONGLY CONSTRUCTED AND - closing 3
SECURED WITH BOLTS SPACED 6" APART. THE FUNNEL IS STEPPED DIRECTLY ON CASING TOP
VENTILATORS ON CASING TOP - 6 @ 24" DIA X .40" THICK X 5'-3" HIGH. SUPPORTED. ✓
No fiddley openings
Efficient steel covers provided for Engine Rm. Skylight.

Particulars of Flush Bunker Scuttles:—

NONE

Particulars of Companionways :—

COMPANION TO CREWS QUARTERS (EMERG. ESCAPE) ON TOP OF
POOP HOUSE. STEEL ENCLOSED 7'-0" X 5'-3" X 2'-10".
PLATING .32" THICK. STIFFENERS 2 1/2" HALF ROUND.
SPACED 23" APART. STEEL DOOR CAPABLE OF BEING OPERATED
FROM BOTH SIDES. STILL 18" HIGH. ✓

ALL VENTS MARKED
X ARE DERRICK POSTS
AND ARE OF STRONG
CONSTRUCTION AND
EFFICIENTLY SUPPORTED
ALL VENTS MARKED
Y ARE SUPPORTED
ALL VENTS FITTED
WITH SHEET METAL
CAPS AND CANVAS COVERS

Particulars of Ventilators in exposed positions on freeboard and superstructure decks :—

	NO	POSITION	DIA.	HGT.	THICKN.	LEADING TO	NO	POSITION	DIA.	HGT.	THICKN.	LEADING TO	NO	POSITION	DIA.	HGT.	THICKN.	LEADING TO		
	1	POOP HO.	8"	30"	32"	STORE	13	SHELTER DK	24"	10'0"	1'40"	N°5 HOLD	26	SHEL. DK	24"	20'0"	4'0"	N°2 HOLD		
	2	"	"	10"	30"	34"	CREN'S LAYN	14	"	24"	20'0"	1'40"	N°4 HOLD	27	FOGGE	15"	36"	4'0"	FOGGE SP	
	3	"	"	10"	30"	34"	S. G. COMPT	17	X	"	25"	42'0"	1'60"	N°4 HOLD	28	"	14"	36"	4'0"	CARP. SH.
	4	"	"	15"	30"	38"	TUNNEL	18	"	"	16"	4'0"	1'40"	DEEP TANK	29	"	8"	36"	3'0"	STORE
	5-6	"	"	12"	30"	34"	CREN'S ACC.	19	"	"	20"	11'0"	1'40"	N°2 H. T.O.	30	"	12"	36"	4'0"	CONTROL RM.
X	7	SHEL. DK	18"	42"	40"	N°5 T. OKS.	20	X	"	20"	21'0"	1'60"	"	"	31	"	15"	36"	4'0"	FOGGE SP.
X	8	"	"	18"	42"	40"	N°6 T. OKS.	21	X	"	20"	11'0"	1'40"	N°2 T. OK.	32	"	14"	36"	3'6"	BOSUN ST.
	9	POOP HO.	10"	30"	34"	S.G. COMPT	22	X	"	25"	33'0"	1'60"	N°2 HOLD	33	"	8"	36"	3'0"	PAINT LK.	
	10	"	"	8"	30"	32"	STORE	23	X	"	25"	33'0"	1'60"	"	34	X	24"	20'	6'0"	N°1 HOLD
	11-12	"	"	12"	30"	38"	CREN'FAC.	24	X	"	16"	4'0"	1'40"	N°2 T.O.						
X	15-16	"	"	25"	31'	60"	N°3 HOLD	25	X	"	24"	10'0"	1'40"	N°1 H. T.O.						

2 AIR PIPES ON SHELTER DK. 18" HIGH $3\frac{1}{2}$ " DIA. TO VEG. OIL TANKS AT SIDES OF TUNNEL ✓
2 " AND FILLING PIPES ON TOP OF POOP HOUSE 18" HIGH. $2\frac{1}{2}$ " DIA. TO A.P. TANK ✓
1 " " " " " " " " " 18" HIGH. $2\frac{1}{2}$ " " TO TRANSOM ✓

Particulars of Air Pipes in exposed positions on freeboard, raised quarter, or superstructure decks :—

Air Pipes in exposed positions on freeboard, raised quarter, or superstructure decks :-									
1	AIR PIPE ON FOGLE OK.	X	HIGH.	3/4 DIA.	TO F.P. TANK.	↓			
1	"	"	"	4"	DIA. TO NO 1 O.B. TANK.	↓			
2	"	"	SHELTER	18"	"	4"	TO NO 2 "	↓	AIR
2	"	"	"	18"	"	4"	TO NO 3 "	↓	FITT.
2	"	"	"	18"	"	3 1/2"	TO NO 4 "	↓	PLAT
2	"	"	"	18"	"	6"	TO DEEP TANK.	↓	AIR
2	"	"	"	18"	"	2"	TO ENG. ROOM COFFERDAMS.	↓	TA
2	"	"	"	18"	"	2 3/4"	TO " FEED WATER D.B.T.	↓	H
2	"	"	"	18"	"	4"	TO NO 5 O.B. TANK.	↓	
2	"	"	"	18"	"	4"	TO ENG. RM. LUB. OIL D.B.T.	↓	
2	"	"	"	18"	"	4"	TO SETTLING & DAILY SERVICE TANKS.	↓	
2	"	"	"	18"	"	3 1/2"	TO NO 7 O.B. TANK.	↓	
2	"	"	"	18"	"	2"	TO COFFERDAM BET. NO 7-8 O.B.T.	↓	
2	"	"	"	18"	"	2 1/2"	TO NO 8 O.B.T.	↓	

AIR PIPES TO O.F. TANKS
FITTED WITH PERFORATED
PLATES AND HINGED COVERS.
AIR PIPES TO WATER
TANKS FITTED WITH
HINGED COVERS ONLY. ✓

Particulars of Gangway Cargo and Coaling Ports :—

NONE.

Lomar.

Particulars of Scuppers and Sanitary Discharge Pipes :—

NO SANITARY DISCHARGES FROM SPACES BELOW THE SHSLTER DECK ✓

ALL SANITARY DISCHARGES FROM ACCOMM. OR SHELTER OR DISCHARGE ABOVE L.W.L AND ARE FITTED WITH NON-RETURN VALVES ON SHIP'S SIDE. ✓

4 SCUPPERS FROM 2ND DECK. 2 P. 2.5. 3 1/2 DIA. DISCHARGE TO MACHINERY SPACE GILGE AND ARE FITTED WITH SELF-CLOSING COCKS AT INNER END. ✓

2-5" DIA. SCUPPERS ARE FITTED FROM TONNAGE WELL, WITH S.D.A.N.R. VALVES CONTROLLED FROM SHELTER DECK AND FITTED WITH INDICATORS. ✓

11 PIPE SCUPPERS FROM SHELTER DECK 3" DIA. ARE FITTED TO DRAIN DIRECTLY OVERBOARD ON PORT AND STARB. SIDES. J

SCUPPERS FROM FO'LE DECK DRAIN TO SHELTER OK. AND FROM FO'LE STORE ROOMS OVERBOARD
WITH NON-RETURN VALVES ON SHIPS' SIDES. ✓

Particulars of Side Scuttles:—

SIDE SCUTTLES IN FOCLE SIDES OF STRONG
CONSTRUCTION AND FITTED WITH HINGED DEADLIGHTS. ✓

Vertical distance of Sill of lowest Side Scuttle above top of keel

53! 0! ✓

Particulars of Guard Rails :—

ON POLE DECK 3' 7" HIGH 3 RODS, STANCHIONS SPACED 3' 6" APART ✓
ON TOP OF POOP HOUSE 3' 7" HIGH 3 RODS, STANCHIONS 3' 6" APART. 1


Particulars of Gangways, Lifelines, etc. :— *NONE.*

NONE.

Particulars of Freeing Arrangements.

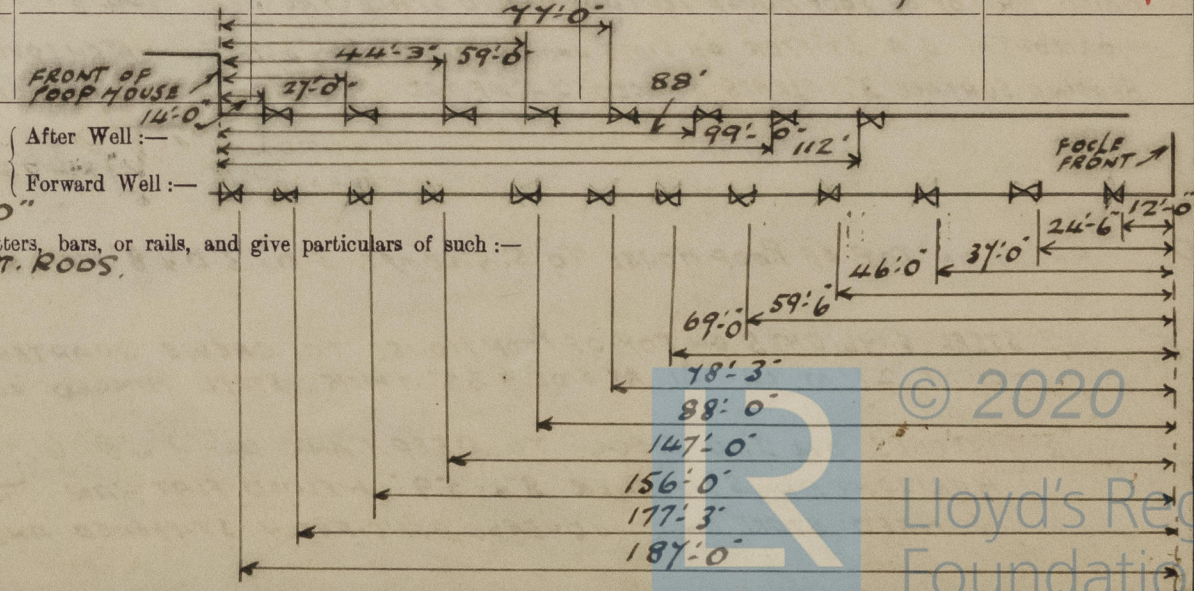
	Length of Bulwark	Height of Bulwark	Size of Freeing Ports	Number each side	Area each side	Rule area each side
After Well	378.8	3'-6 1/2"	25" x 9 1/2"	20	30 sq ft	31290 sq ft
Forward Well						

State position of each freeing port (After Well :—

(F. and A. position and height above deck edge) = $\left\{ \begin{array}{l} \text{Forward Well:—} \end{array} \right.$ 

State whether the freeing ports are fitted with shutters, bars, or rails, and give particulars of such :—

Additional area where sheer is less than standard.



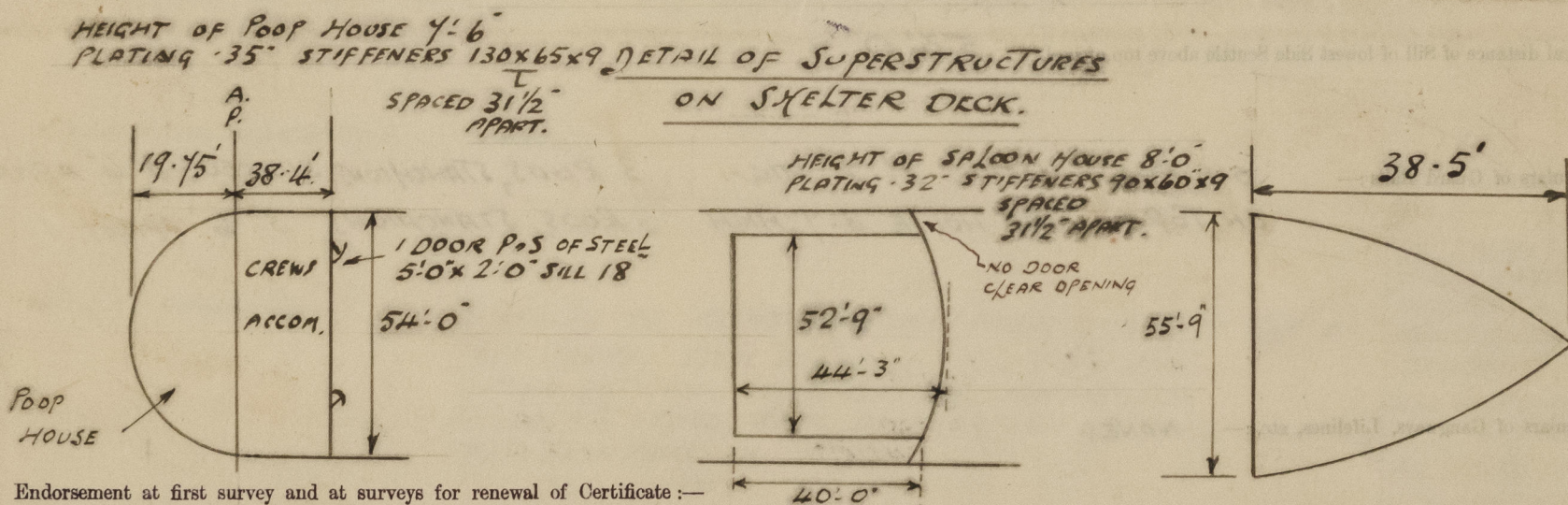
PARTICULARS OF PROTECTION TO OPENINGS, ETC.

HATCHWAYS ON FREEBOARD AND SUPERSTRUCTURE DECKS.										
SHELTER DECK.					FREEBOARD DECK.					
Description of Hatchway	Nº1	Nº2	Nº3	Nº4	Nº5	
Dimensions of Hatchway	29'-2"x21'	34'-5"x21'	34'-5"x21'	34'-5"x21'	34'-5"x21'	34'-5"x21'
COAMINGS	Height above Deck	36"✓	36"✓	36"✓	36"✓	36"✓	9"x3 1/2"✓
	Thickness	43"✓	43"✓	43"✓	43"✓	43"✓	9"x3 1/2"✓
	Sides	43"✓	43"✓	43"✓	43"✓	43"✓	9"x3 1/2"✓
	Ends	43"✓	43"✓	43"✓	43"✓	43"✓	9"x3 1/2"✓
HATCH BEAMS	Stiffeners	9"x3"x43"	9"x3"x43"	9"x3"x43"	9"x3"x43"	9"x3"x43"	NONE✓
	Brackets, Stays	10" B.P.	10" B.P.	10" B.P.	10" B.P.	10" B.P.	NONE✓
	Number P.S.	3	4	4	4	4	NONE✓
	Bearing Surface	3 1/2"✓	3 1/2"✓	3 1/2"✓	3 1/2"✓	3 1/2"✓	3 1/2"✓
FORE AND AFTERS	Number	4	4	4	4	4	4
	Spacing	3'-7 3/4"	4'-3 3/4"	4'-3 3/4"	4'-3 3/4"	4'-3 3/4"	4'-3 3/4"
	Unsupported Lengths	8"x59"	8"x59"	8"x59"	8"x59"	8"x59"	8"x59"
	Scantling and Sketch	8"x59"	8"x59"	8"x59"	8"x59"	8"x59"	8"x59"
HATCH COVERS	Material	PINE✓	PINE✓	PINE✓	PINE✓	PINE✓	PINE✓
	Thickness	2 1/2"	2 1/2"	2 1/2"	2 1/2"	2 1/2"	2 1/2"
	How fitted	F.A.	F.A.	F.A.	F.A.	F.A.	F.A.
	Bearing Surface	3"	3"	3"	3"	3"	3"
Spacing of Cleats					24"	24"	24"	24"	24"	24"
Number of Tarpaulins					2	2	2	2	2	2

*Are wood fore and afters steel shod at all bearing surfaces? ✓
 Are battens and wedges efficient and in good condition? YES ✓
 Are tarpaulins in good condition and in accordance with rule requirements? YES ✓
 Are lashings provided in accordance with rule requirements? YES ✓

NOTE ALL HATCH BEAMS
 FITTED WITH VERTICAL STIFFENERS
 BETWEEN TOP & BOTTOM BARS. ✓

Particulars of any special features:—



The fittings and appliances are in accordance with the particulars shown on this form (or as now modified) and are in good condition.

HATCHES CONTO.

- A. HATCH TO TONNAGE OPENING. 4'-11" x 21'-0". COAMING 9"x3 1/2"x43" B.A. 2 1/2" THICKNESS. FIBERGLASS. WOOD COVERS, 2 TARPULINS AND EFFICIENT TEMPY BATTENING ARRGTS. PROVIDED ✓ bearing surface of hatch covers 2 1/2" ✓
- B. HATCH ON POPE DK. TO PEAK STORE 3'-9" x 3'-9". COAMING 12"x45" STEEL HINGED W.T. COVER SECURED WITH TOGGLES. ✓
- C. HATCH ON TOP OF POOP HOUSE TO POOP CARGO SPACE (TRUNKED) 4'-4" x 14'-9". COAMING 3'-2" HIGH x 43" THICK. HORIZONTAL B.A. STIFFER ON SIDES AND ENDS 10"x3 1/2"x44". HATCH COVERS 2 1/2" THICK. 2 TARPULINS. BEARING SURFACE 3". CLEATS SPACED 24" APART. 1 HATCH BEAM, SPACED 3'-8" BEARING SURFACE 3 1/2" ✓
 WELDED FLAT 6 1/2"x39" 9"x48" B.A. ✓
- D. HATCH ON TOP OF POOP HOUSE TO S.G. COMPT. 3'-0" x 3'-0" x 8" HIGH. x 44" THICK. STEEL HINGED COVER SECURED WITH TOGGLES. ✓
- E. 2 STEEL SKYLIGHTS ON TOP OF POOP HOUSE TO CREWS QUARTERS 5'-0" x 4'-10". HEIGHT 27" AT CR - 21" AT SIDE x 32" THICK. STEEL HINGED COVERS SECURED WITH THUMB SCREWS ✓
- F. 2 HATCHES ON 2ND DECK TO DEEP TANK 14'-9" x 8'-6". COAMING 24"x32" THICK. HORIZONTAL STIFFENER 8"x59" WELDED FLAT BAR. WITH BRACKETS UNDER. HINGED STEEL W.T. COVERS, EFFICIENTLY STIFFENED AND SECURED WITH TOGGLES ✓