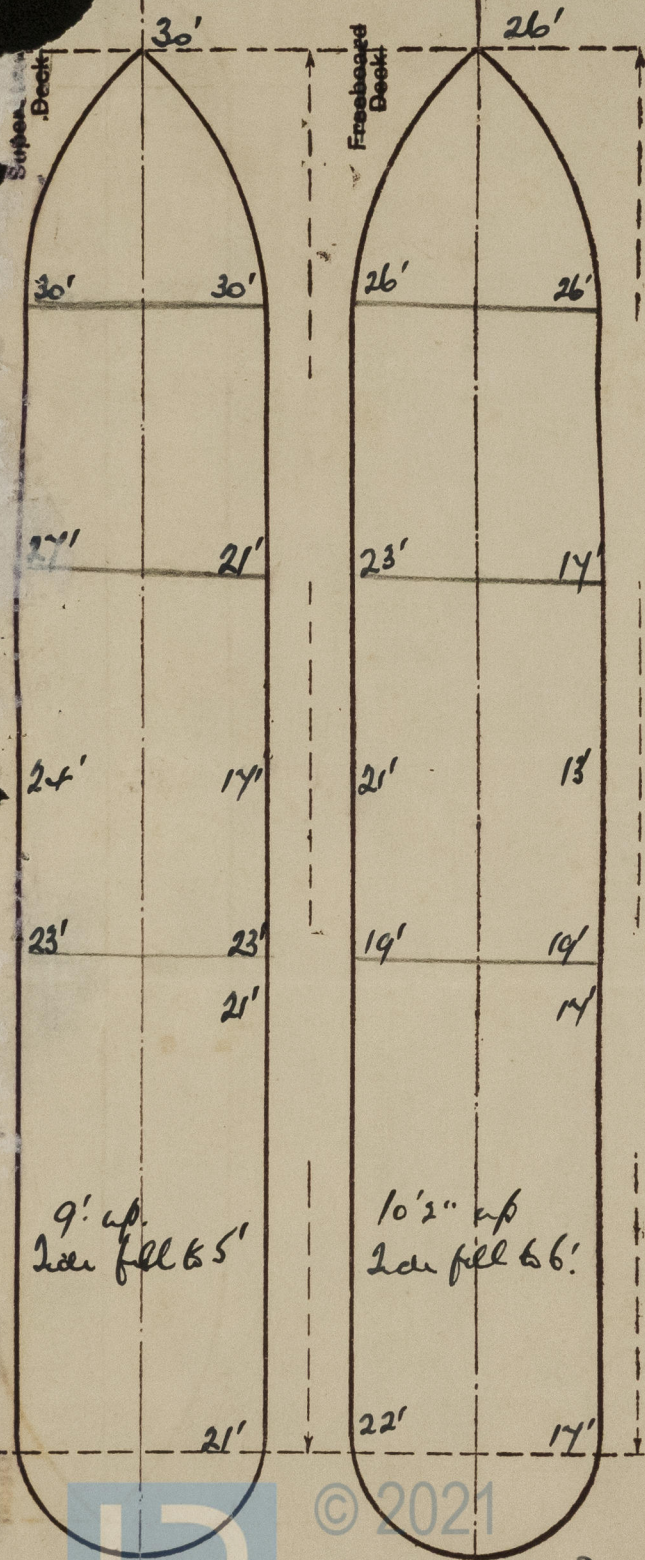


pla.

1.7.53

20.30 hours

Sketch (11)



9' up.
2nd fill to 5'

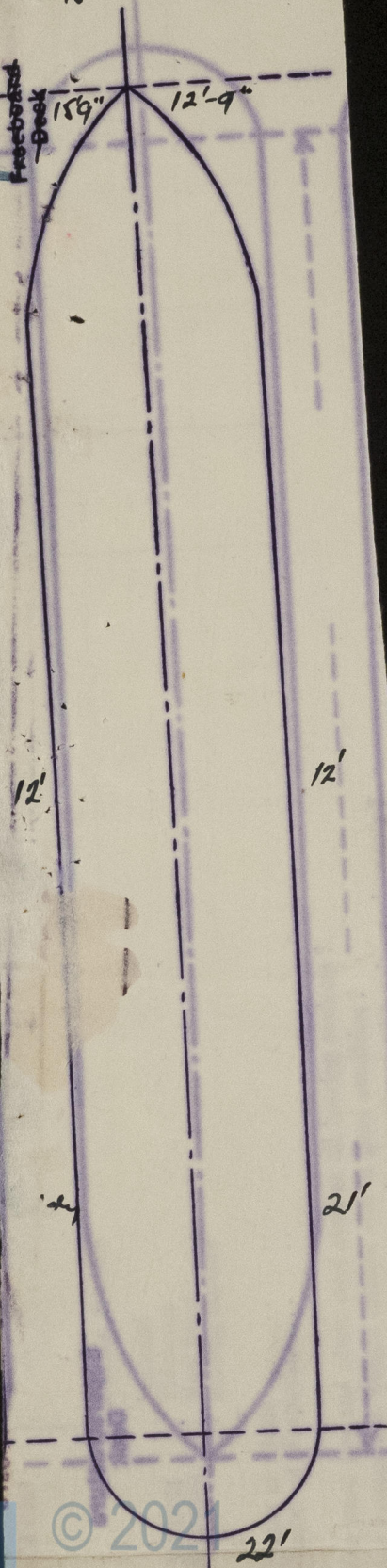
10'2" up
2nd fill to 6'

Vessel loaded with 3740 tons D.W. when
sounded.
When refloated 2120 D.W. remained on
board.

004698-004702-0270 1/2

San Jose

1.7.53. at 19.30 hours
grounding taken by
port survey beam.



Subtract 8' for Chart
data - i.e. Height
of Tide 8'.

0270 ²/₂