

Read with H.K. letter
dated 20/5/64.

S.S. MANDARIN STAR

ex Kooralya

HULL PARTICULARS

| | |
|-----------------|------------------------|
| LENGTH | 310' 6" |
| BREADTH | 46' 6" |
| DEPTH MOULDED | 25' 2" |
| SUMMER DRAFT | 20' 10" |
| GROSS TONNAGE | 3089 TONS |
| NET TONNAGE | 1801.49 TONS |
| 270 FATHOMS | 1 1/2" STUD LINK CABLE |
| 2 BOWER ANCHORS | 47 CWT |
| 1 " " | 48 CWT |

CARGO CAPACITIES

| COMPARTMENT | FRAME | GRAIN | BALE |
|-------------------------|----------|--------|--------|
| HOLD NO. 1 | 117-147 | 52474 | 48859 |
| 2 | 86-117 | 63397 | 61357 |
| 3 | 11-64 | 91122 | 84844 |
| TOTAL | | 209493 | 195060 |
| BRIDGE TWEEN DECK | 71-86 | 3870 | 3510 |
| " " " S. | 67-86 | 4902 | 4446 |
| BRIDGE TWEEN DECK FORE | 86-95 | 7570 | 6810 |
| FORE CASTLE TWEEN DECK | 140-STEM | 4472 | 4450 |
| TOTAL | | 20814 | 19216 |
| FORE PEAK STORE | 147-STEM | 1490 | 1228 |
| BRIDGE TWEEN D.S. STORE | 57-64 | 1344 | 920 |
| TOTAL | | 2834 | 2148 |
| GRAND TOTAL | | 233141 | 216414 |

WATER BALLAST CAPACITIES

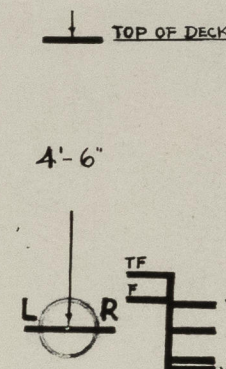
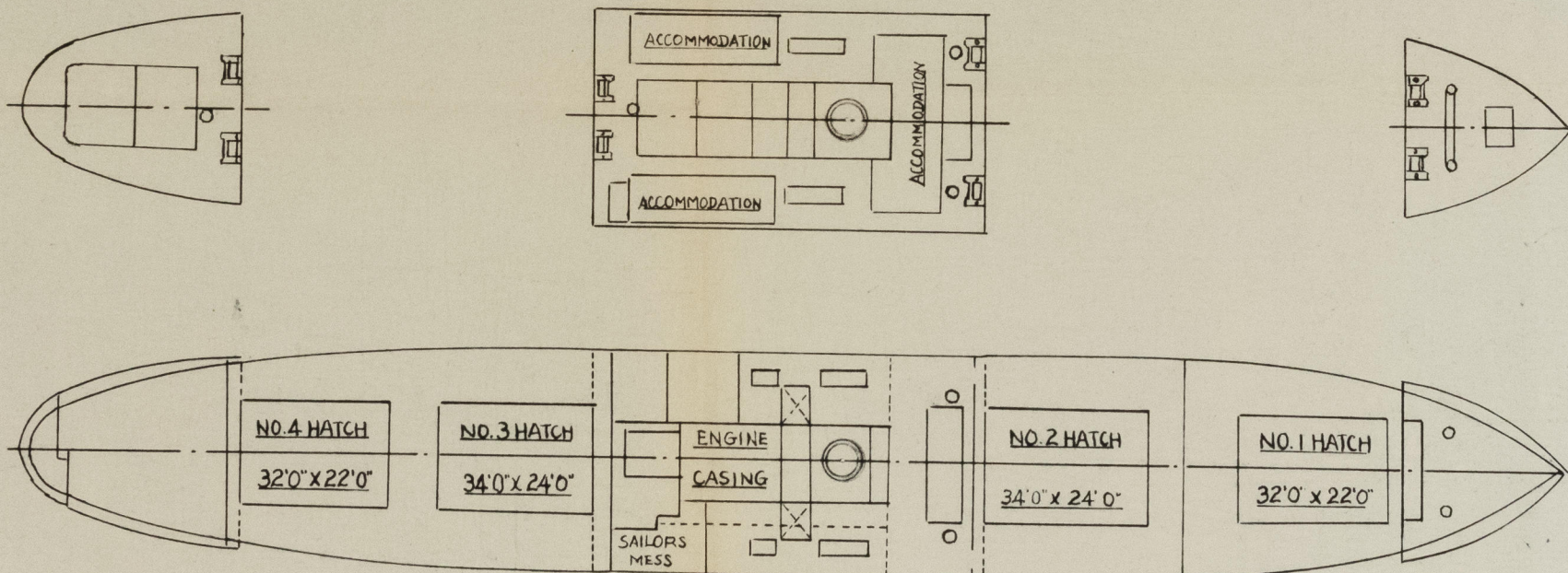
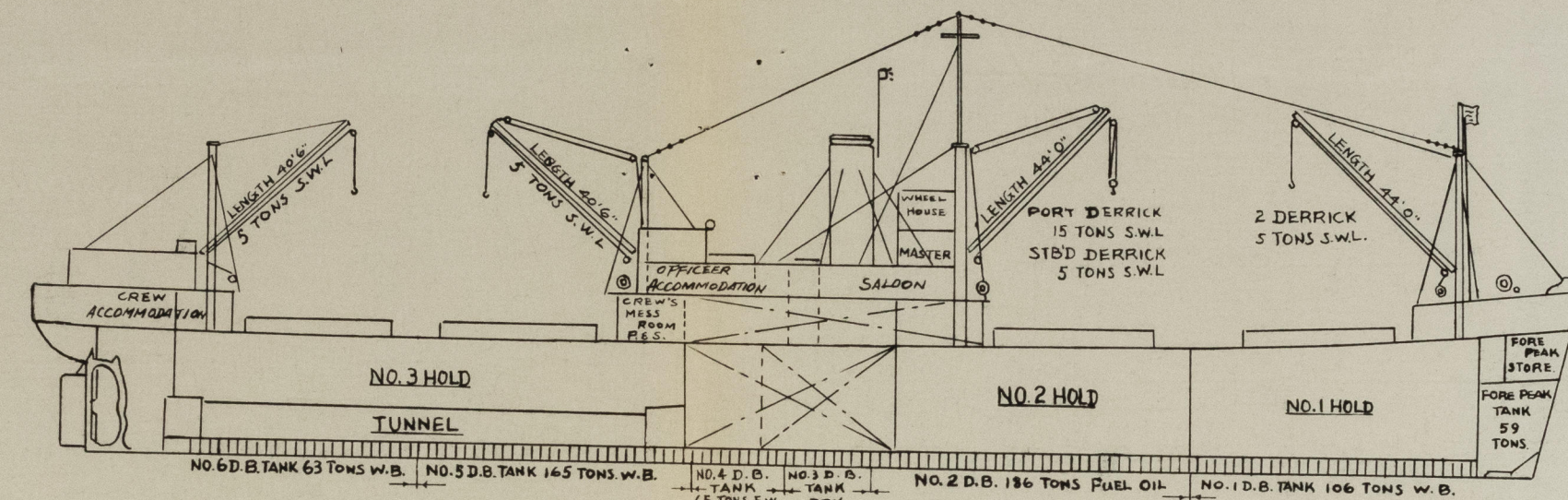
| COMPARTMENT | FRAME | LENGTH | TONS |
|---------------------|----------|--------|------|
| D. B. TANK NO. 1 | 117-147 | 60' 0" | 116 |
| 3 | 76-84 | 18' 0" | DRY |
| 5 | 36-65 | 58' 0" | 165 |
| 6 | 12-36 | 48' 0" | 63 |
| TOTAL D. B. TANK | | | 344 |
| AFT PEAK TANK | 2-11 | 18' 0" | 109 |
| FORE " " | 147-STEM | 16' 6" | 59 |
| TOTAL WATER BALLAST | | | 512 |

FUEL OIL CAPACITIES

| COMPARTMENT | FRAME | LENGTH | TONS |
|------------------|--------|--------|------|
| D. B. NO. 2 TANK | 84-117 | 66' 0" | 186 |
| SETTLING TANK | 76-86 | 80' 0" | 166 |
| TOTAL | | | 352 |

FRESH WATER CAPACITIES

| COMPARTMENT | FRAME | LENGTH | TONS |
|------------------|-------|--------|------|
| D. B. TANK NO. 4 | 65-75 | 20' 0" | 64 |
| TOTAL | | | 64 |



| DRAFT IN FEET | DEAD WEIGHT IN TONS | TONS PER INCH |
|---------------|---------------------|---------------|
| 22 | 5000 | |
| 21 | 4500 | 290 |
| 20 | 4000 | 285 |
| 19 | 3500 | 280 |
| 18 | 3000 | 275 |
| 17 | 2500 | 270 |
| 16 | 2000 | 265 |
| 15 | 1500 | 260 |
| 14 | 1000 | 255 |
| 13 | 500 | 250 |
| 12 | 0 | 250 |
| 11 | | 250 |
| 10 | | 250 |
| 9 | | 250 |
| 8 | | 250 |
| 7 | | 250 |
| 6 | | 250 |
| 5 | | 250 |

DEADWEIGHT LOADED
4634 TONS

DRAWN Y. S. LEE

DATE 14TH AUG. 1963

SOUTH EAST ASIA SHIPPING CO.,

TEL 660875

Box 236
M. Lee

004718-004725-0042



© 2020

Lloyd's Register
Foundation