

Lloyd's Register of Shipping.

SURVEYS FOR FREEBOARD.

(CONDITIONS OF ASSIGNMENT.)

No. 18208.

*HAPPY SEAFARER*Ship's Name *EMPIRE MARLOWE*Port of Survey *West Hartlepool*

Official Number

168933

Surveyor's Signature

*W. J. Caird*Nationality and Port of Registry *British, West Hartlepool*

Date of Survey

Nov. 1941. whilst building.

Disposition and dimensions of superstructures, trunks, deckhouses and machinery casings to be inserted in the diagrams and tabular statement: -

FEEL DK.

STEEL.

UPPER DK. STEEL.

2nd DK.

Superstructure Deck

SECOND
Freeboard DeckCR OF
RUDDER
STOCK.

381'-7½"

382'-2"

32'-4½"

6½"
24'-10½"
25'-5"
15'-0"

Particulars of Superstructures, Trunks, Casings, Deckhouses.

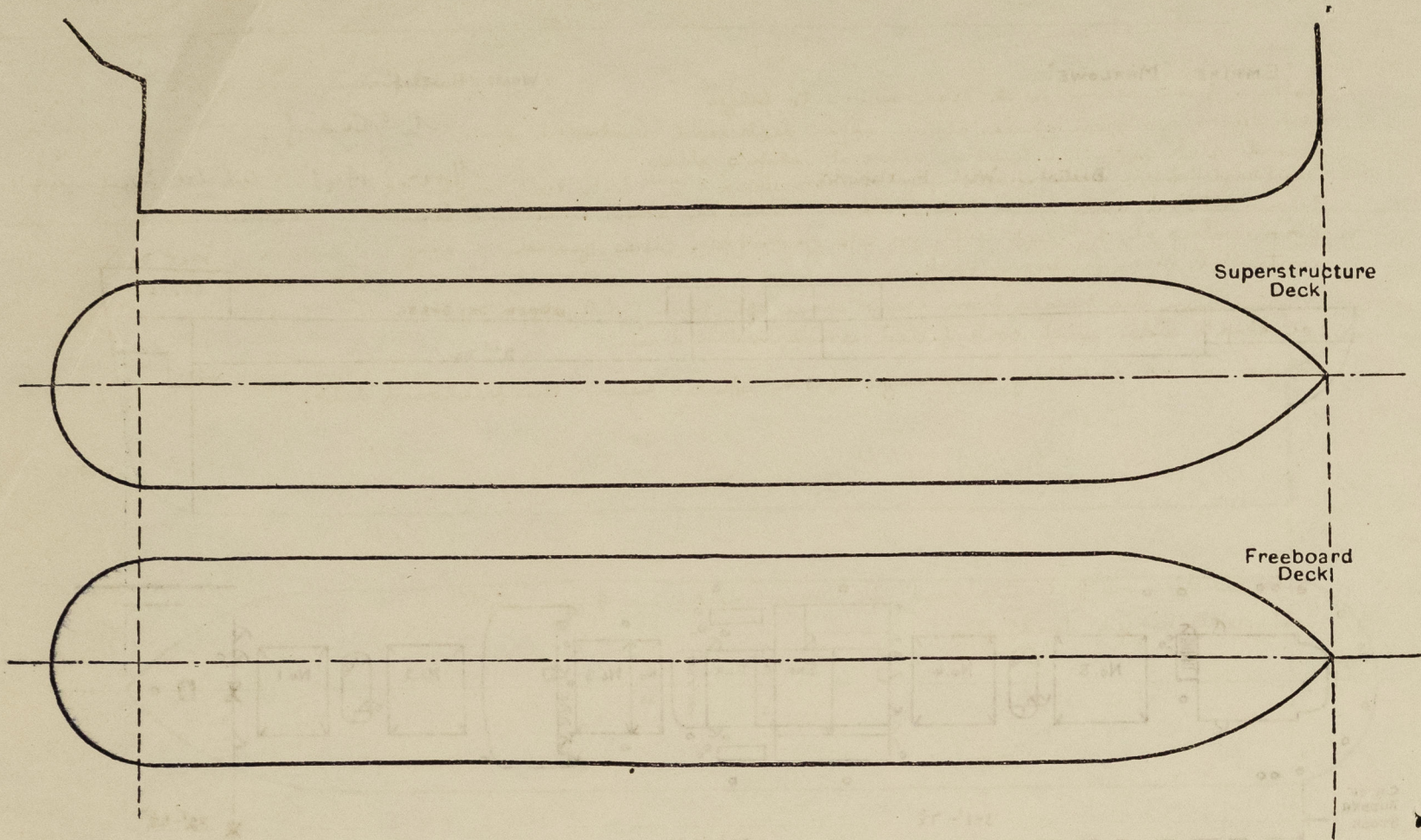
	Coaming	Plating	Stiffeners	Spacing	End Attachments of Stiffeners	Size of Openings	Height of Sills	Height of Casings
Poop Bulkhead ...								
Raised Quarter Deck Bulkhead ...				✓				
Bridge, After Bulkhead ...								
Bridge, Forward Bulkhead ...								
Forecastle Bulkhead ...	✓	.30	4 x 2½ x 5/16 A	30"	none	1 at 5'-1" x 4'-1" 3 at 4'-7" x 2'-0"	18"	7'-0" ✓
Trunk, Aft ...								
Trunk, Forward ...								
Exposed Machinery Casings on Freeboard or Raised Quarter Decks34	.30	4 x 2½ x 5/16 A	30"	none	2 @ 5'-0" x 2'-0"	18"	7'-6" ✓
Exposed Machinery Casings on Superstructure Decks ...								
Machinery Casings within Superstructures not fitted with Class I Closing Appliances ...								
SALOON HOUSE SIDES.		.28	4 x 2½ x 5/8 A	30" to 35"	KNEES AT TOP	all 5'-0" x 2'-0"	18"	7'-6" ✓
Deckhouses on Flush Deck Ships FORW. END.		.30	5 x 3 x 3/4 A	30" to 38"	WELDED.	except one at 5'-0" x 3'-0"		

Particulars of Closing Appliances (state if capable of being manipulated from both sides).

Poop Bulkhead ...	
Raised Quarter Deck Bulkhead ...	
Bridge, After Bulkhead ...	
Bridge, Forward Bulkhead ...	
Forecastle Bulkhead ...	Hinged steel doors operated from both sides and hook bolted plates. ✓
Exposed Machinery Casings on Freeboard or Raised Quarter Decks ...	Hinged steel doors operated from both sides. ✓
Exposed Machinery Casings on Superstructure Decks ...	✓
Machinery Casings within Superstructures not fitted with Class I Closing Appliances ...	✓
SALOON HOUSE.	
Deckhouses on Flush Deck Ships ...	1½" and 1⅞" solid hinged hardwood and steel hinged doors operated from both sides. ✓

PARTICULARS OF PROTECTION TO OPENINGS, ETC.

The following diagrams should be used to indicate the positions of cargo and coaling hatchways, gangway, cargo and coaling ports, ventilators, companionways, etc., which would affect the seaworthiness of the ship :—



Particulars of fiddley, funnel and ventilator coamings, engine room skylight and other openings in machinery casing tops and their means of closing :—

Fiddley, funnel, vent coamings and engine room skylight of steel and efficiently constructed.

Fiddley gratings covered by efficient steel covers permanently attached.

Particulars of Flush Bunker Scuttles :—

Escape trunk from tunnel at aft
end of Engineers deckhouse.
Hinged steel door operated from
both sides 5'-0" x 2'-0", 22" sill.

Particulars of Companionways :—

Particulars of Companionways:—
Companionway to crew quarters
incorporated in efficiently
constructed deckhouse.
3 doors, 2" hinged hardwood 5'x2'
2 1/2" coaming and operated from
both sides.

Companionway to 'tween dk.
Refrig. machinery room aft end
of saloon house.
Hinged steel door operated from
both sides 4'-6" x 2'-0"
22" coaming. ✓

Companionway in mast deckhouse
bet. Nos. 1 + 2 & Nos. 4 + 5 Hatchways &
giving entrance to holds & tween deks.
Outer doors.
Steel hinged doors 3'-9" x 2'-0" ft. ✓
from both sides. Sills 24".
Inner doors.
Steel hinged doors 4'-3" x 2'-0" ft. ✓
from both sides. Sills 12".

Particulars of Ventilators in exposed positions on freeboard and superstructure decks :—

Forecastle dk 1- 1-6" dia vent to F.P. stove coaming 36" x 30
2-21" " " " turn dk & hold " 36" x 40

Upper dk :- 4-30" dia vents on mast deckhouse top coaming 19" x 40
1-12" " vent to turn dk & holds " 36" x 34
2- efficiently constructed davit port vents to holds.
2-12" dia vents to turn decks coaming 36" x 34
2-15" " " " " & holds 36" x 36
2-21" " " " " " " 10'-9" x 40 supported
2-21" " " " " " " 36" x 40

12-6" goose-neck vents to accm. aft " 18" high
2-12 x 4 vents to turn dk amidships " 36" high x 38
2-6" vents to holds amidships 36" x 30
1-6" vent to machinery refing. room 36" x 30
1-12" vent at fore end of saloon house to turn dk coaming 9'-6" x 34 supported
1-12" " " aft " " " 82"-0" x 34 " "
2-21" vents abreast No. 3 hatch to hold and turn dk " 36" x 40
1-9" vent at turn decks aft coaming 36" x 32
2-6" vents " " " " 6" x 30 with screwdown top.

closing
appliances
supplied.

Particulars of Air Pipes in exposed positions on freeboard, raised quarter, or superstructure decks :—

Forecastle dk :-	1-4"	air	pipe to	F.P.	18" High
	1-5"	"	"	No. 1 D.B	18" "
Upper dk :-	2-5"	"	"	No. 2 "	30" "
	2-5"	"	"	No. 3 "	30" "
	2-6"	"	"	No. 4 "	30" "
	4-3"	"	"	No. 5 "	30" "
	2-3 1/2"	"	"	No. 6 "	30" "
	2-4"	"	"	" " "	30" "
	3-3"	"	"	No. 7 "	30" "
	1-4"	"	"	A.P. tank	30" "
	1-3"	"	"	crusher stem	7'-0" supported. ✓

closing appliances supplied.

Particulars of Gangway Cargo and Coaling Ports:—

None.

Particulars of Scuppers and Sanitary Discharge Pipes :—

Scupper from second deck lead down to bilges. ✓
 Soil discharges from spaces above upper deck lead overboard above ✓
 second deck with M.C.I. stern valves at ship's sides.
 Discharge from crew space aft between upper & 2nd decks lead overboard
 below second deck with M.C.I. stern valves at ship's sides and screw
 down valves at 2nd deck level on top of scupper pipes geared to and
 controlled from freeboard deck.
 Wash basin discharges from crew space aft have M.C.I. stern valves
 at ship's side with cock fitted underneath basin.
 There are no sanitary discharges from spaces below the freeboard

Particulars of Side Scuttles:—

Side scuttles in forecandle and aft tween decks are fitted with efficient hinged deadlights.

Vertical distance of Sill of lowest Side Scuttle above top of keel..... 37' - 8 $\frac{1}{4}$ "

Particulars of Guard Rails :—

Forecastle: - 3 tier rails 3'-6" high with stanchions 4'-6" apart.
Upper deck: - 3 " " 3'-6" " " " 4'-6" " are
fitted forward of saloon house & aft of Engineers deckhouse.
Between the fore end of saloon house & aft end of Engineers
deckhouse efficient bulkheads 3'-6" high are fitted with 2
freeing ports 6'0" x 8" and 2 freeing ports 5'6" x 8" p & s.

Particulars of Gangways, Lifelines, etc. :—


lifelines available on freeboard deck.

Particulars of Freeing Arrangements.						
	Length of Bulwark	Height of Bulwark	Size of Freeing Ports	Number each side	Area each side	Rule area each side
After Well			<i>after rails</i> ✓			
Forward Well						

State position of each freeing port { After Well :—
(F. and A. position and height above deck edge) { Forward Well :—

State whether the freeing ports are fitted with shutters, bars, or rails, and give particulars of such :—

Additional area where sheer is less than standard.



© 2020
Lloyd's Reg
Foundation

PARTICULARS OF PROTECTION TO OPENINGS, ETC.

HATCHWAYS ON FREEBOARD AND SUPERSTRUCTURE DECKS.												Casing To cross Bunker
FREEBOARD DECK												
Description of Hatchway	Hatch to F.P.	Hatch to F.P.	No. 1	No. 2	No. 3	No. 3A	No. 4	No. 5	2 coal hatches	Hatch to A.P. space		
Dimensions of Hatchway	4' x 3'	4' x 3'	31'-6" x 22'-0"	32'-6" x 22'-0"	21'-9" x 22'-0"	11'-9" x 22'-0"	30'-0" x 22'-0"	32'-6" x 22'-0"	20'-0" x 22'-0"	3'-0" x 3'-0"	16' x 5'	
COAMINGS	Height above Deck	18"	31"	31"	31"	31"	31"	31"	31"	18"	8" BA	
	Thickness	.35	.44	.44	.44	.44	.44	.44	.44	.38	7/16	
	Sides	.35	.44	.44	.44	.44	.44	.44	.44	.38		
	Stiffeners	✓	✓	✓	✓	✓	✓	✓	✓	✓	✓	
HATCH BEAMS	Number	5	5	3	1	5	5	5	5	✓		
	Spacing	5'-3"	5'-5"	5'-5"	5'-10 1/2"	5'-0"	5'-5"	5'-5"	5'-5"			
	Scantling and Sketch	✓	✓	✓	✓	✓	✓	✓	✓			
	Bearing Surface	✓	✓	✓	✓	✓	✓	✓	✓			
FORE AND AFTERS	Number	✓	✓	✓	✓	✓	✓	✓	✓	✓		
	Spacing	✓	✓	✓	✓	✓	✓	✓	✓	✓		
	Unsupported Lengths	✓	✓	✓	✓	✓	✓	✓	✓	✓		
	Scantling* and Sketch	✓	✓	✓	✓	✓	✓	✓	✓	✓		
HATCH COVERS	Material	wood	wood	wood	wood	wood	wood	wood	wood	Efficient	wood	
	Thickness	2 1/2	2 1/2	2 1/2	2 1/2	2 1/2	2 1/2	2 1/2	2 1/2	tinged W.T.	2 1/2	
	How fitted	F+A	F+A	F+A	F+A	F+A	F+A	F+A	F+A	ath.	F+A	
	Bearing Surface	2 1/2	2 1/2	3	3	3	3	3	3	2 1/2	2 1/2	
Spacing of Cleats	24	24	24	24	24	24	24	24	24	✓	24	
Number of Tarpaulins	2	2	2	2	2	2	2	2	2	✓	2	
*Are wood fore and afters steel shod at all bearing surfaces?												✓
Are battens and wedges efficient and in good condition?												✓
Are tarpaulins in good condition and in accordance with rule requirements?												✓
Are lashings provided in accordance with rule requirements?												✓

Yes (locking bars supplied for all weather)

Particulars of any special features:—

Tonnage openings in bulkheads between 2nd & freeboard decks closed by bolted watertight steel plates, except those in bulkhead between No. 1 & 2 tween decks which are closed by riveted plates.

Endorsement for deeper loading desired. ✓

Endorsement at first survey and at surveys for renewal of Certificate:—

The fittings and appliances are in accordance with the particulars shown on this form (or as now modified) and are in good condition.

