

17.337

S. P. AUSTIN & SON, LTD
SHIPBUILDERS & REPAIRERS
WEAR DOCK YARD
BUNDESLAND
Date 10 March 1937
Reference No. 11.345. H.H.

NO. 345.

RUDDER PLAN. (RUDDER FRAME FORGED STEEL)

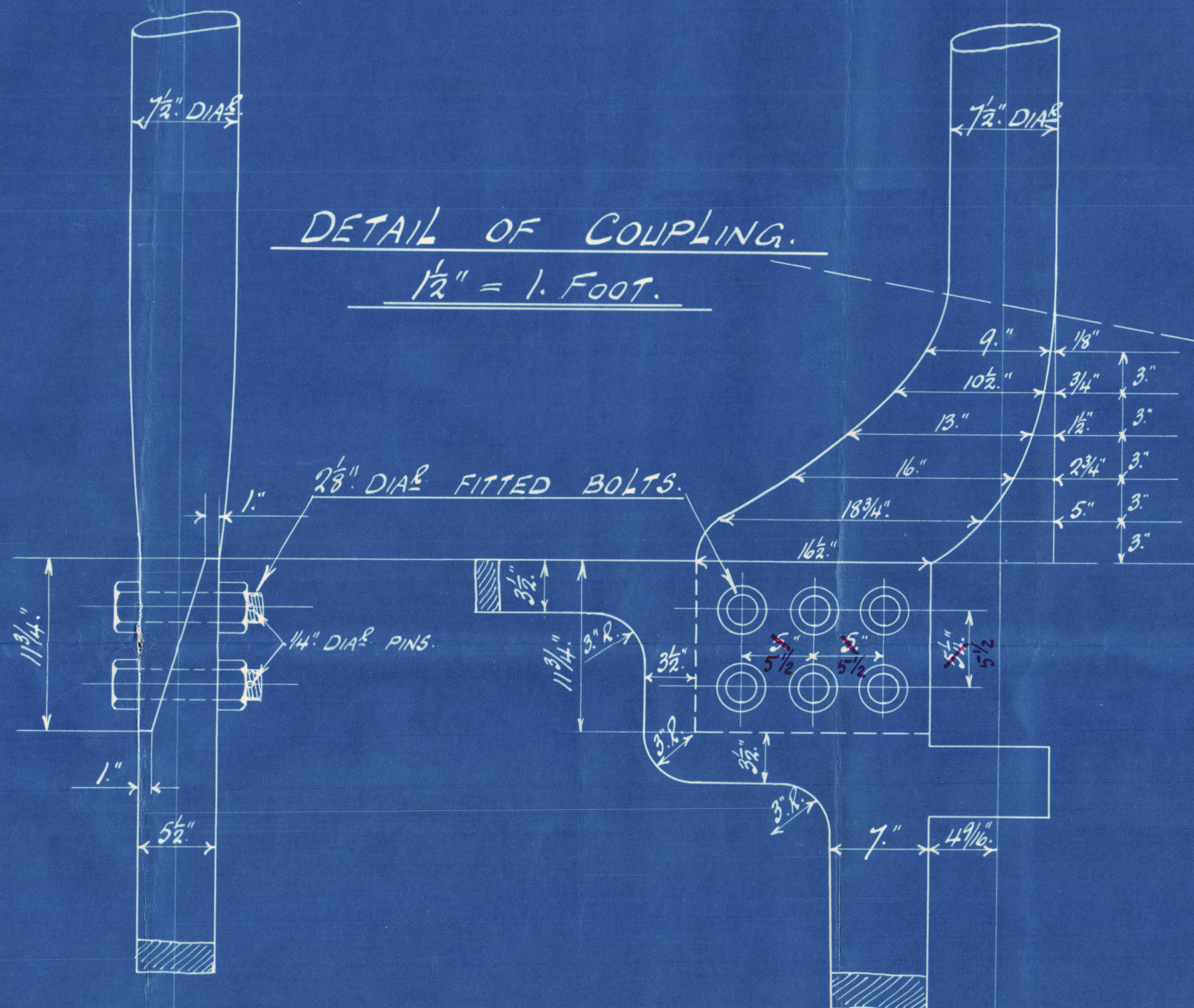
SCALE $\frac{3}{4}" = 1 \text{ FOOT.}$

A. x D. = 70.72 x 3.07 = 217.11.

SPEED UNDER 10. KNOTS.

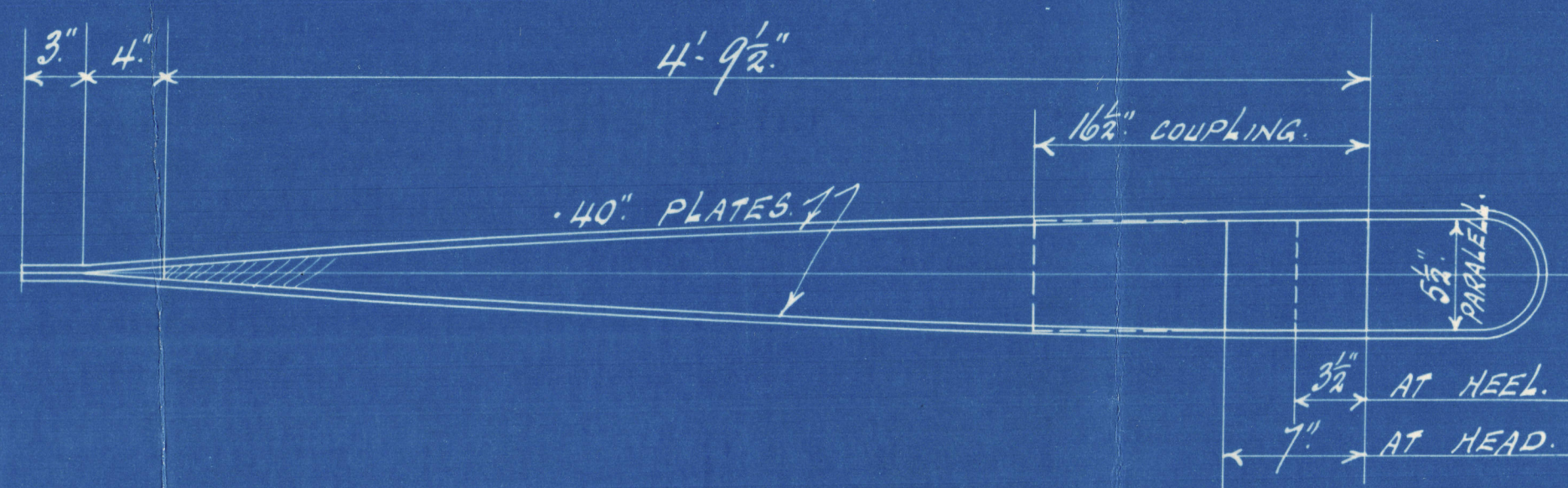
DETAIL OF COUPLING.

$\frac{1}{2}" = 1 \text{ FOOT.}$



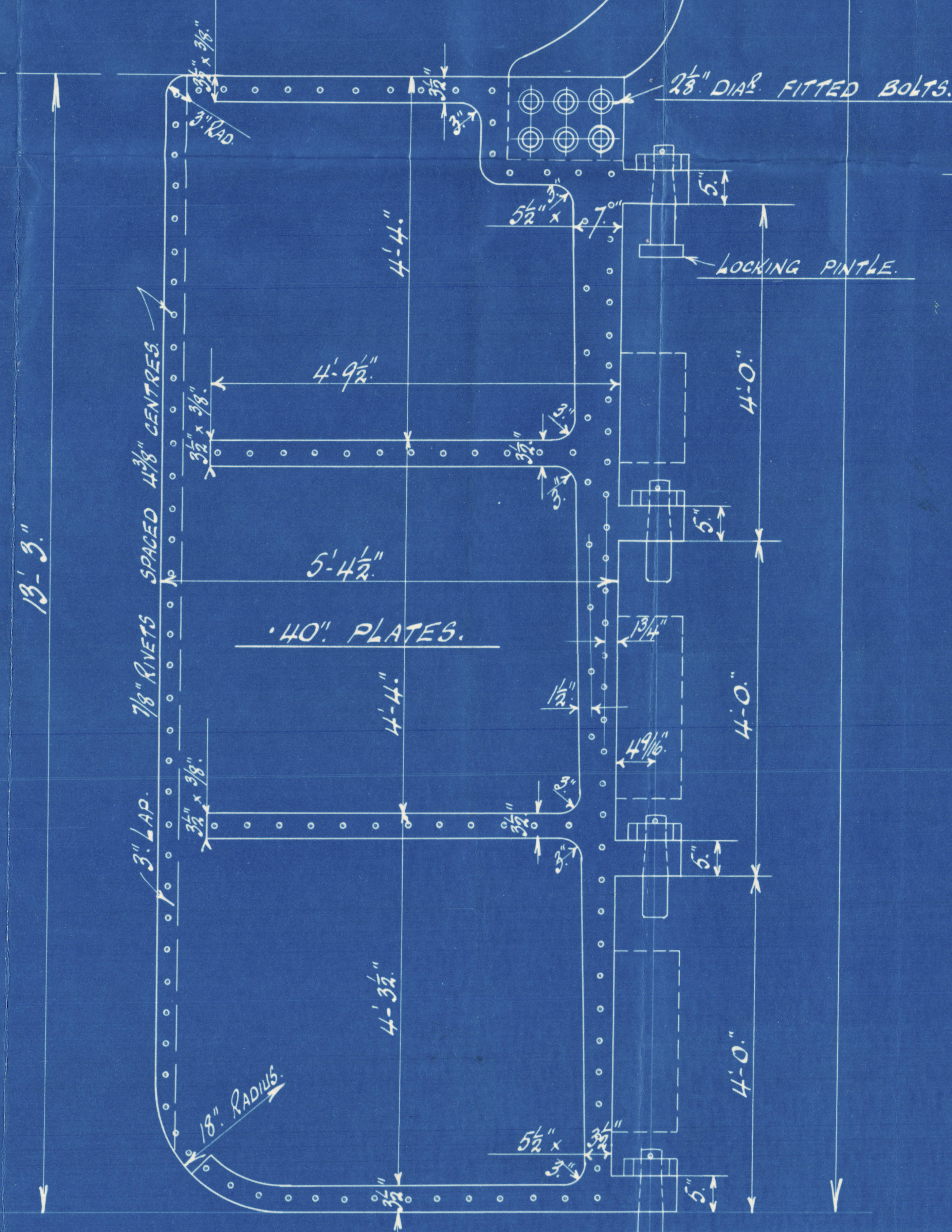
SECTION IN WAY OF ARMS.

$\frac{1}{2}" = 1 \text{ FOOT.}$



RULE DIA. = 7"
+ 1/2" DIA. INCREASE TO
OWNERS REQUIREMENTS = 7 1/2"

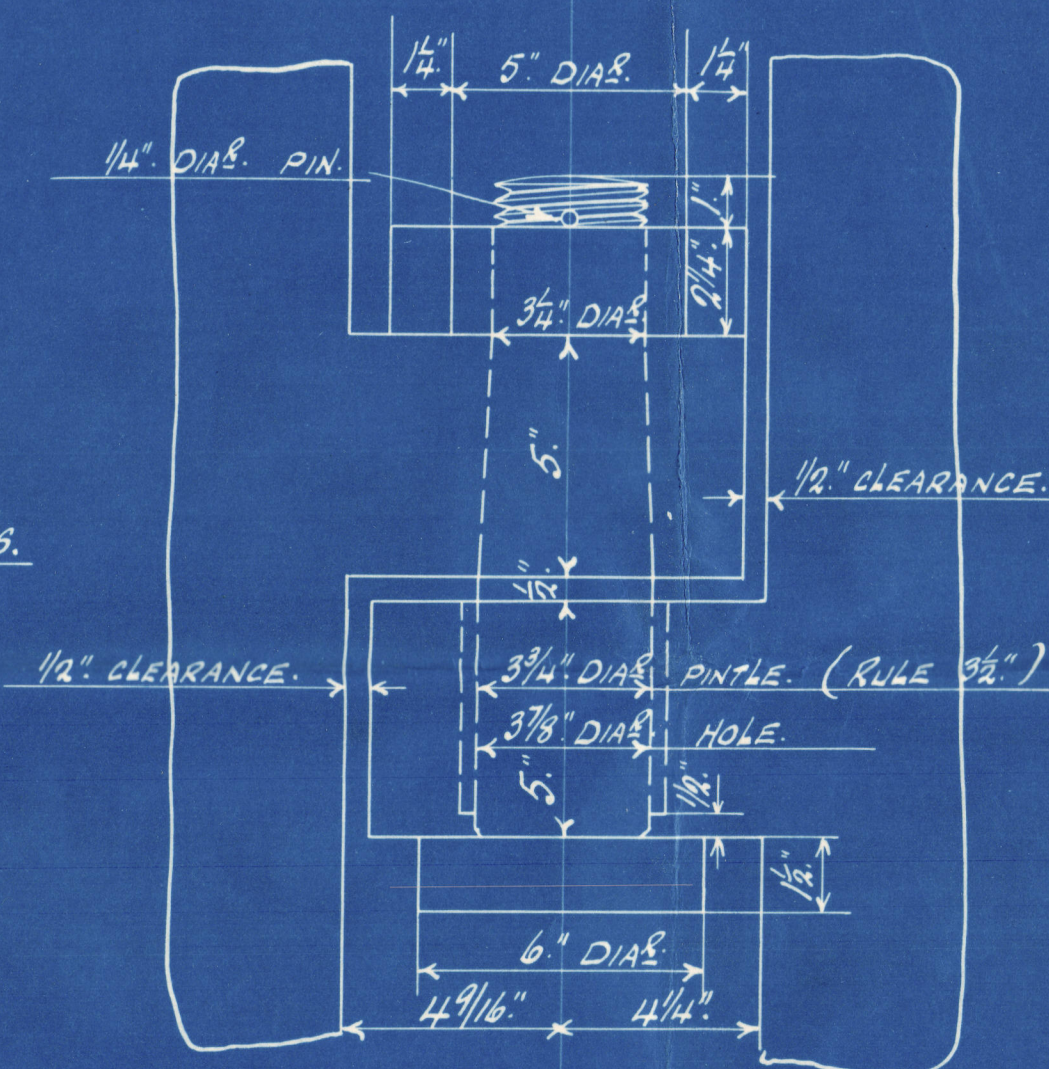
RIVETS THRO' RUDDER FRAME GENERALLY
7/8" DIA. SPACED 4 3/8" APART.



COMBINED RUDDER CARRIER
+ BRAKE.

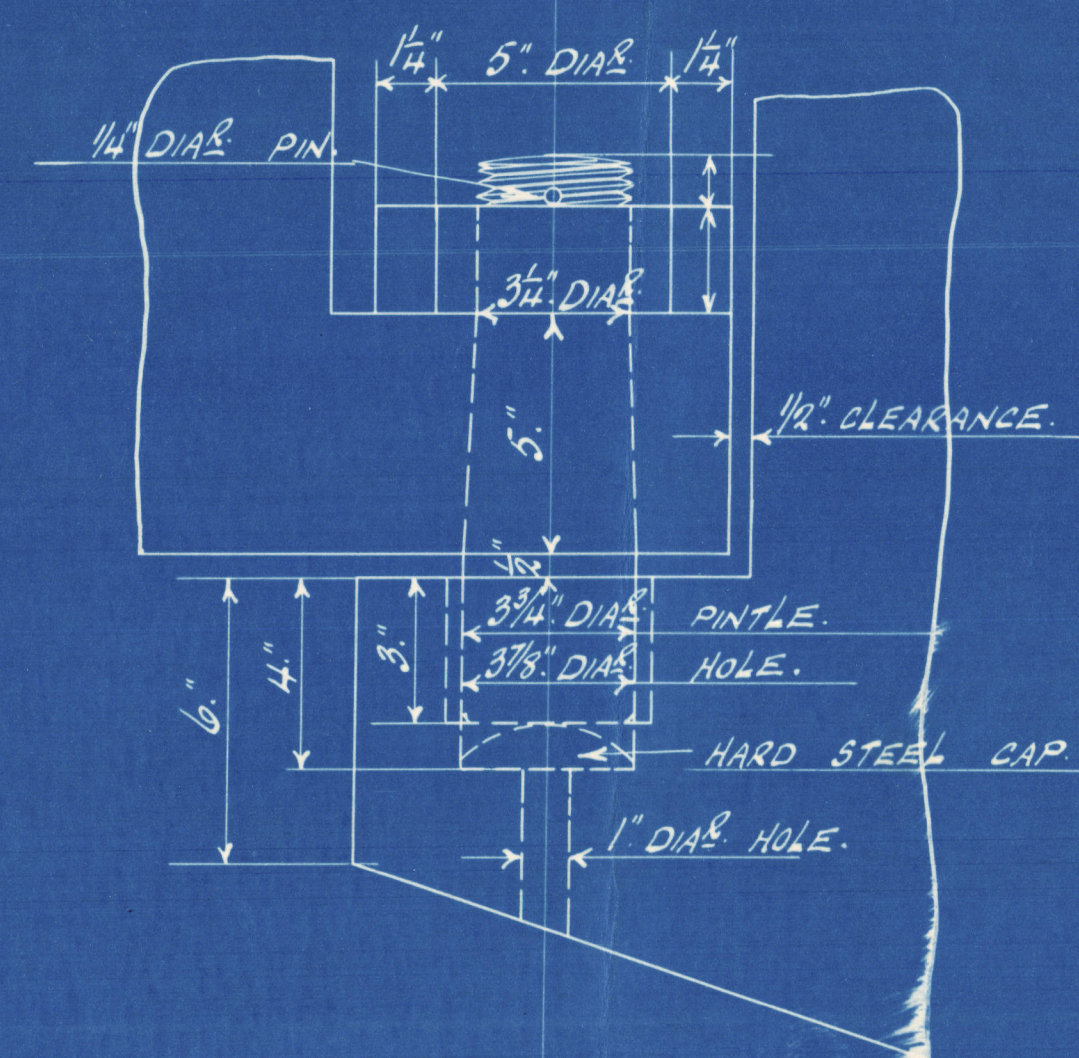
QUARTER DX

ABOUT 26' 6"



DETAIL OF PINTLES.

3" = 1 FOOT.



17.337



S. P. AUSTIN AND SON, LTD

No. 345.

RUDDER PLAN.



"Hunkwood"

SUNDERLAND RPT. NO. 32292.



© 2021

Lloyd's Register
Foundation

004769-004777-0124