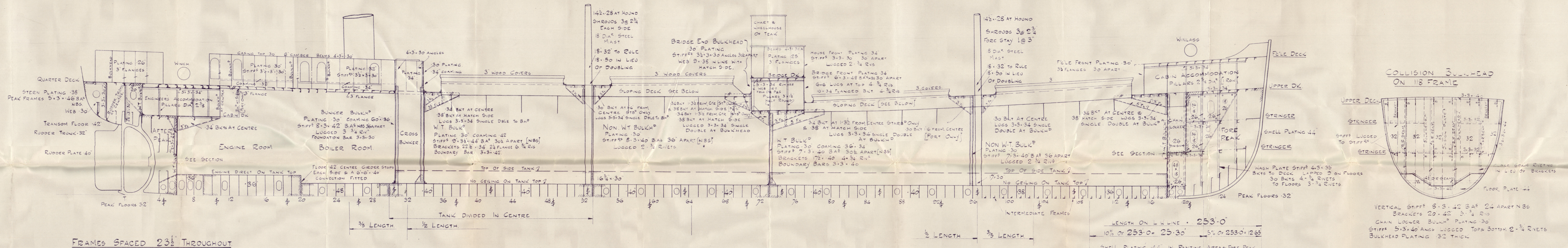


S/S. **MONKWOOD.**

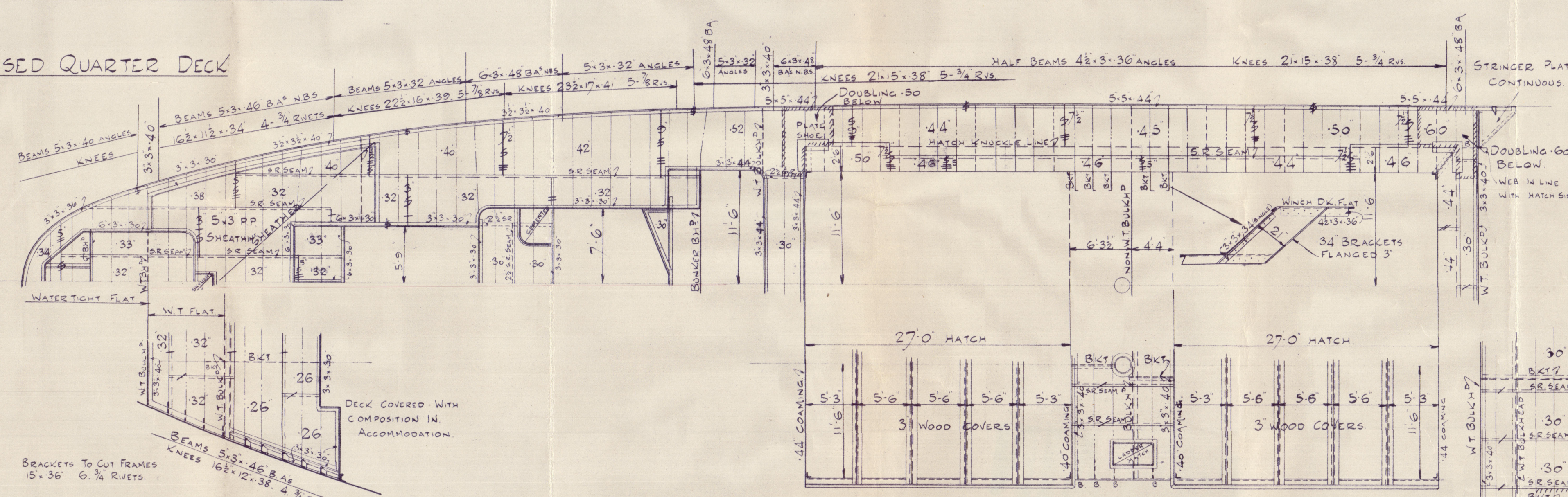
PROFILE AND DECKS.

SCALE $\frac{1}{8}'' = 1 \text{ FOOT.}$

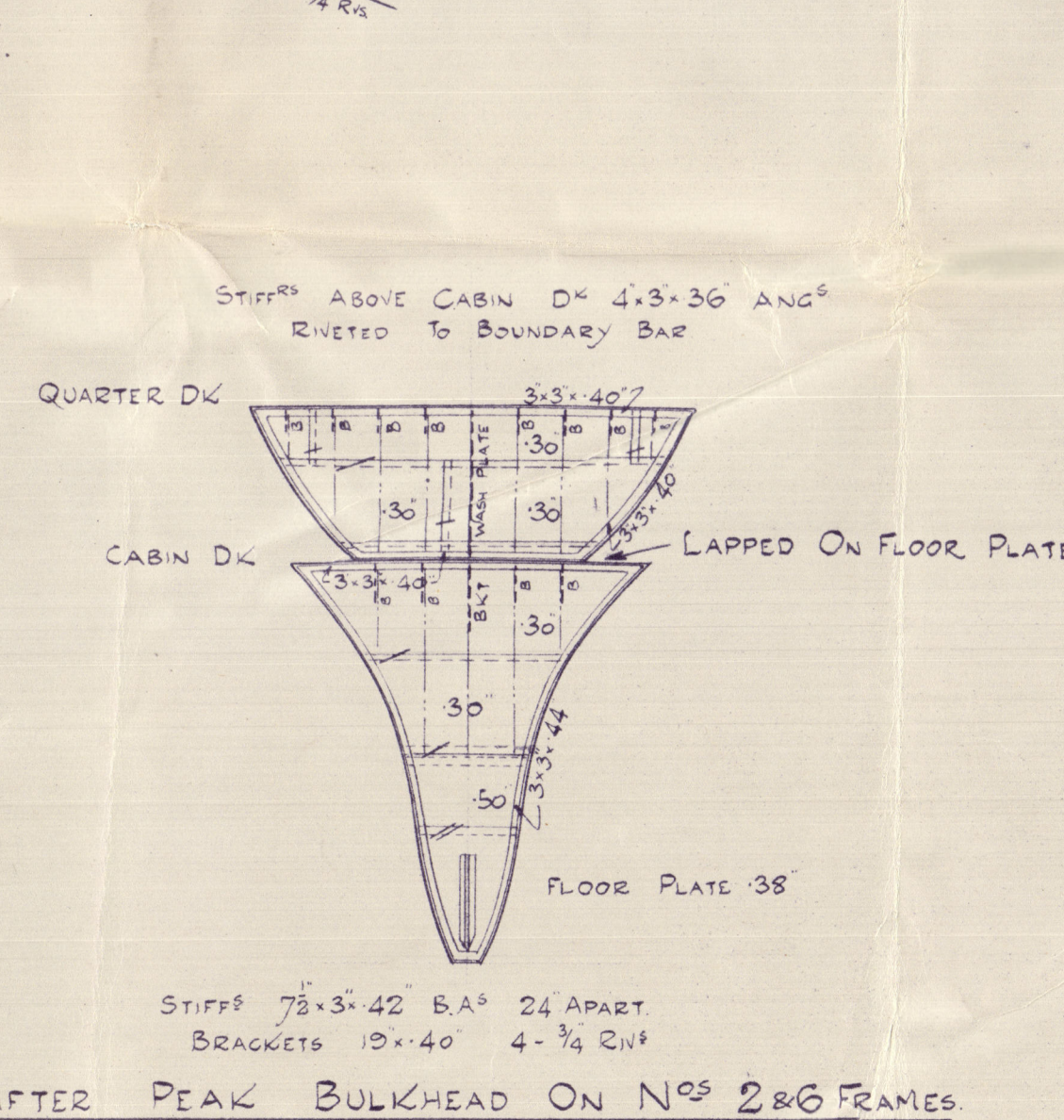
S. P. AUSTIN & SON, LTD
SHIPBUILDERS & REPAIRERS
WEST BRIDGE YARD
SUNDELAND.
Date *26 January 1938*
Reference *345*



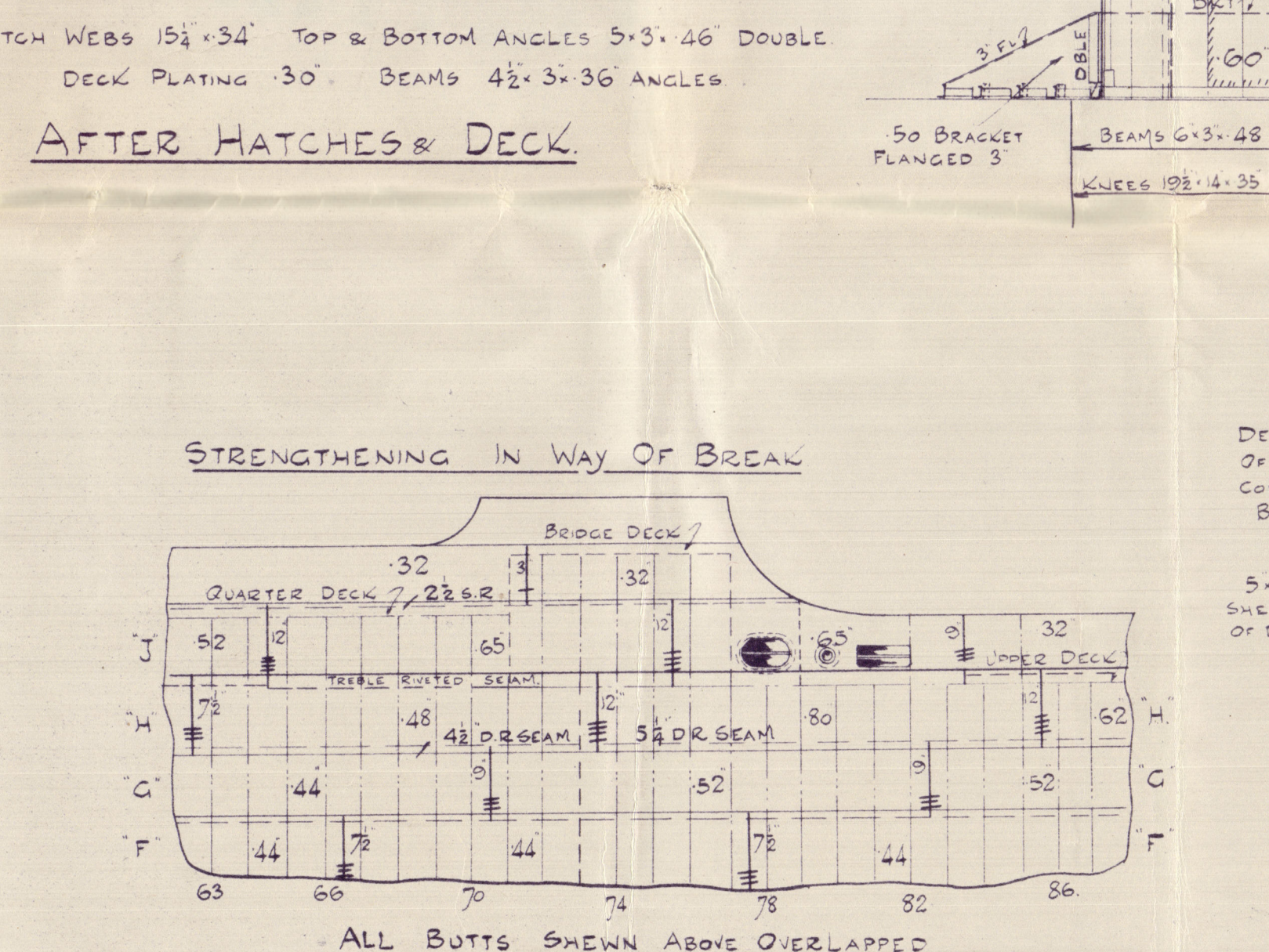
RAISED QUARTER DECK



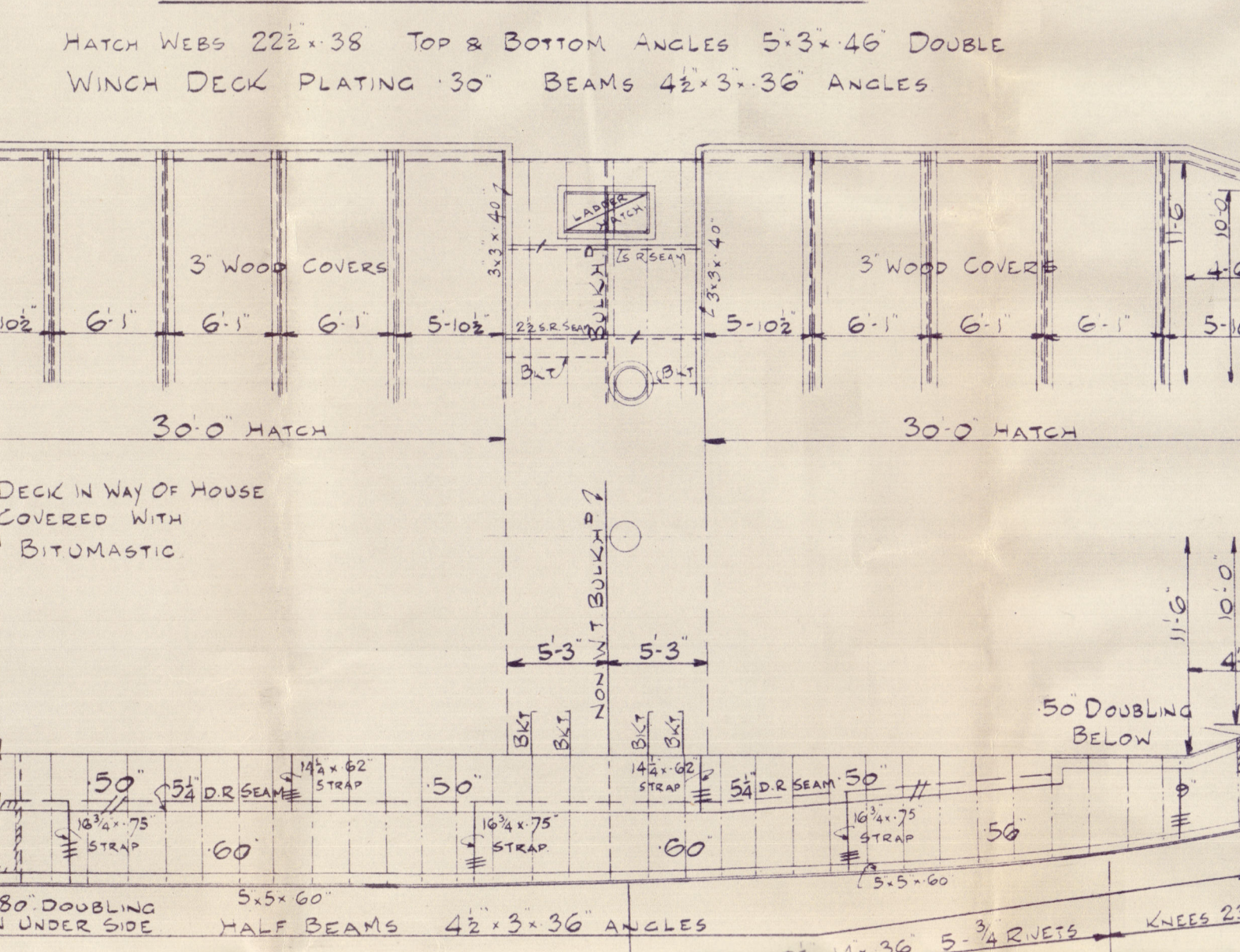
CABIN DECK



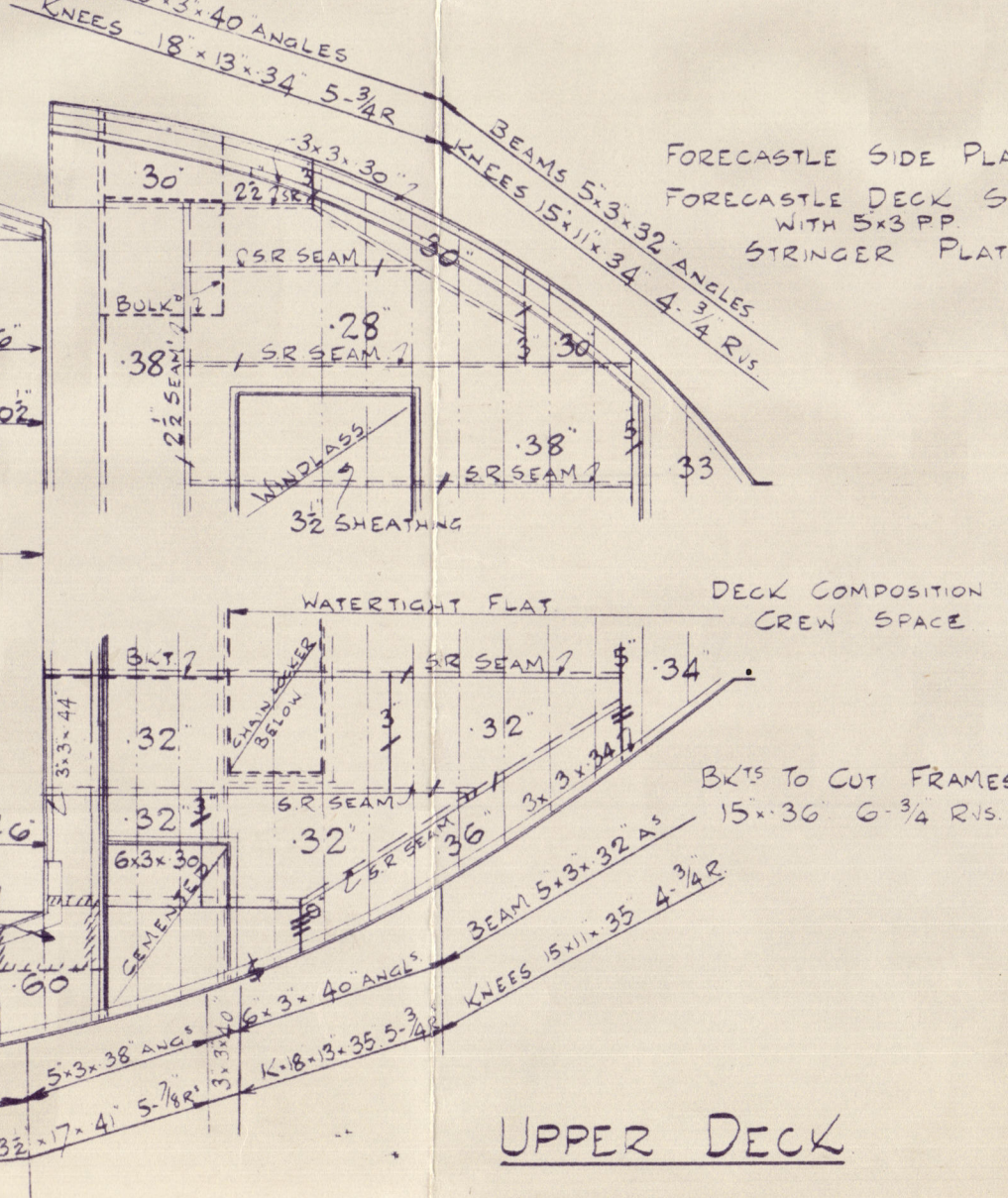
AFTER HATCHES & DECK



FORWARD HATCHES & DECKS



FORECASTLE DECK

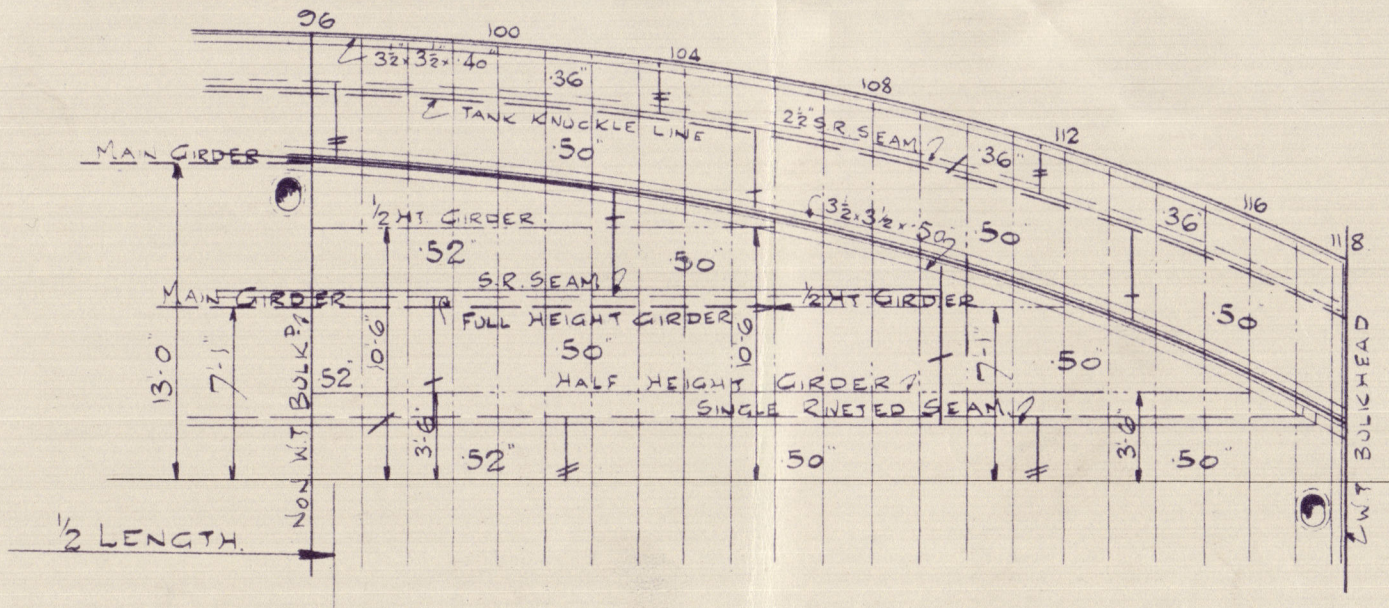


FREEBOARD PARTICULARS

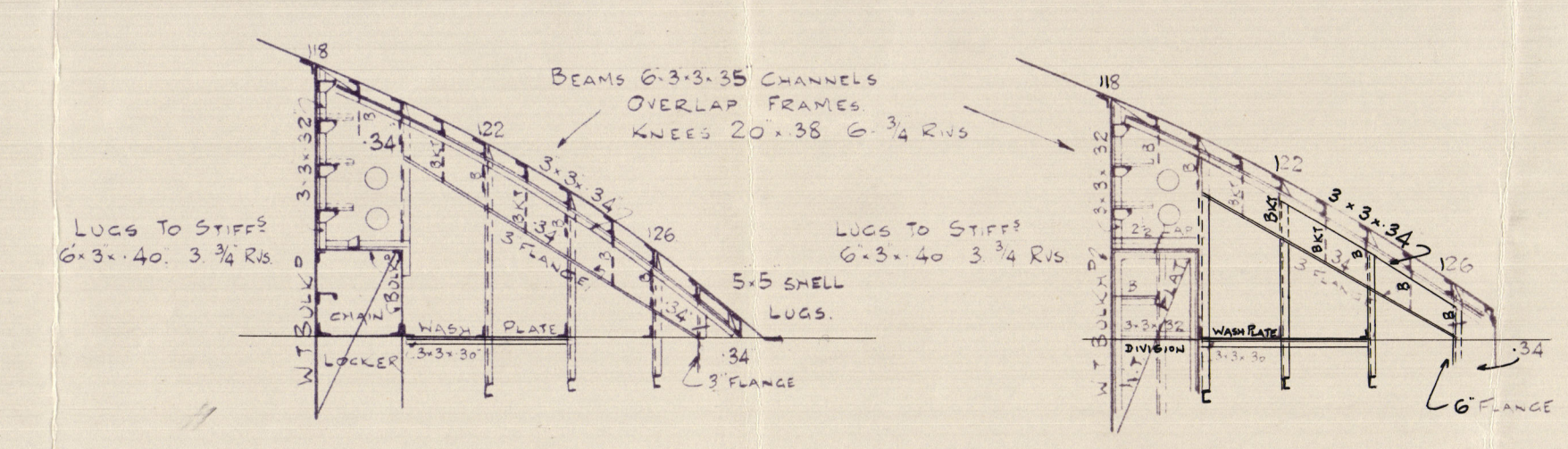
LENGTH ON L.W. LINE	233.0 ft
BREADTH MOULDED	37.03 ft
DEPTH MOULDED	18.50 ft
85% OF DEPTH MOULDED	15.725 ft
MOULDED DISPLACEMENT AT 85% DEPTH MOULDED	3228 Tons
DISPLACEMENT COEFF	.7626
RAISED QUARTER DECK	139,635.40
FORECASTLE	26,427.00
BRIDGE	11,737.00

SHEER AFT 2-3
SHEER FORWARD 6-0
PARABOLIC CURVE TO RULE

DOUBLE BOTTOM FORWARD



UPPER STRINGER



LOWER STRINGER

S.P. Austin & Sons, Ltd No. 345.

s/s "MONKWOOD"

Profile & Decks (As built).

SUNDERLAND RPT. No 32292



004769-004777-0126