

# "BRITA DAN"

FULL SCANTLING MOTORCARGO VESSEL.  
CLASS: LLOYDS REG. + 100A1 "STRENGTHENED FOR NAVIGATION IN ICE"  
ICE CLASS: I.

## DIMENSIONS

LENGTH OVERALL	328' - 1/2" = 99.462 M.
LENGTH BETWEEN P.P.	288' - 6" = 88.000 M.
BREADTH MOULDED	46' - 3" = 14.100 M.
DEPTH MOULD TO UPPERDECK	26' - 3" = 8.000 M.
DEPTH MOULD TO TWEENDECK	18' - 0" = 5.490 M.
HEIGHT OF TWEENDECK	8' - 2 1/4" = 2.510 M.
HEIGHT OF FORECASTLE	7' - 0" = 2.130 M.
HEIGHT OF WINCHHOUSE	7' - 1/2" = 2.150 M.
HEIGHT OF DECKHOUSE	8' - 0" = 2.440 M.

HEIGHT OF MASTS ABOVE BASE LINE 98' - 4 1/2" = 29.985 M.  
HEIGHT OF MASTS ABOVE BASE LINE WITH TOP Laid DOWN 81' - 7 1/2" = 24.880 M.  
HEIGHT OF RADAR MAST WITHOUT SCANNER ABOVE BASE LINE 84' - 6 1/2" = 25.779 M.

## MAIN ENGINE

ONE DIRECT REVERSIBLE, SINGLE ACTING, TWO STROKE, 5 CYLINDERS.  
2 & W DIESEL ENGINE OF THE CROSSHEAD TYPE, COMPLETELY ENCLOSED.  
WITH SOLID INJECTION AND FORCED LUBRICATION TYPE 550-VTBF 110.  
BORE 500MM. STROKE 1100MM. DEVELOPING 2900 B.H.P./1700 P.M.

## WIRELESS

RADAR, WIRELESS, DIRECTION FINDER, ECHO SOUNDING, DECCA, GYRO COMPASS,  
SELF STEERING.

SPEED: 13 1/2 KNOTS.

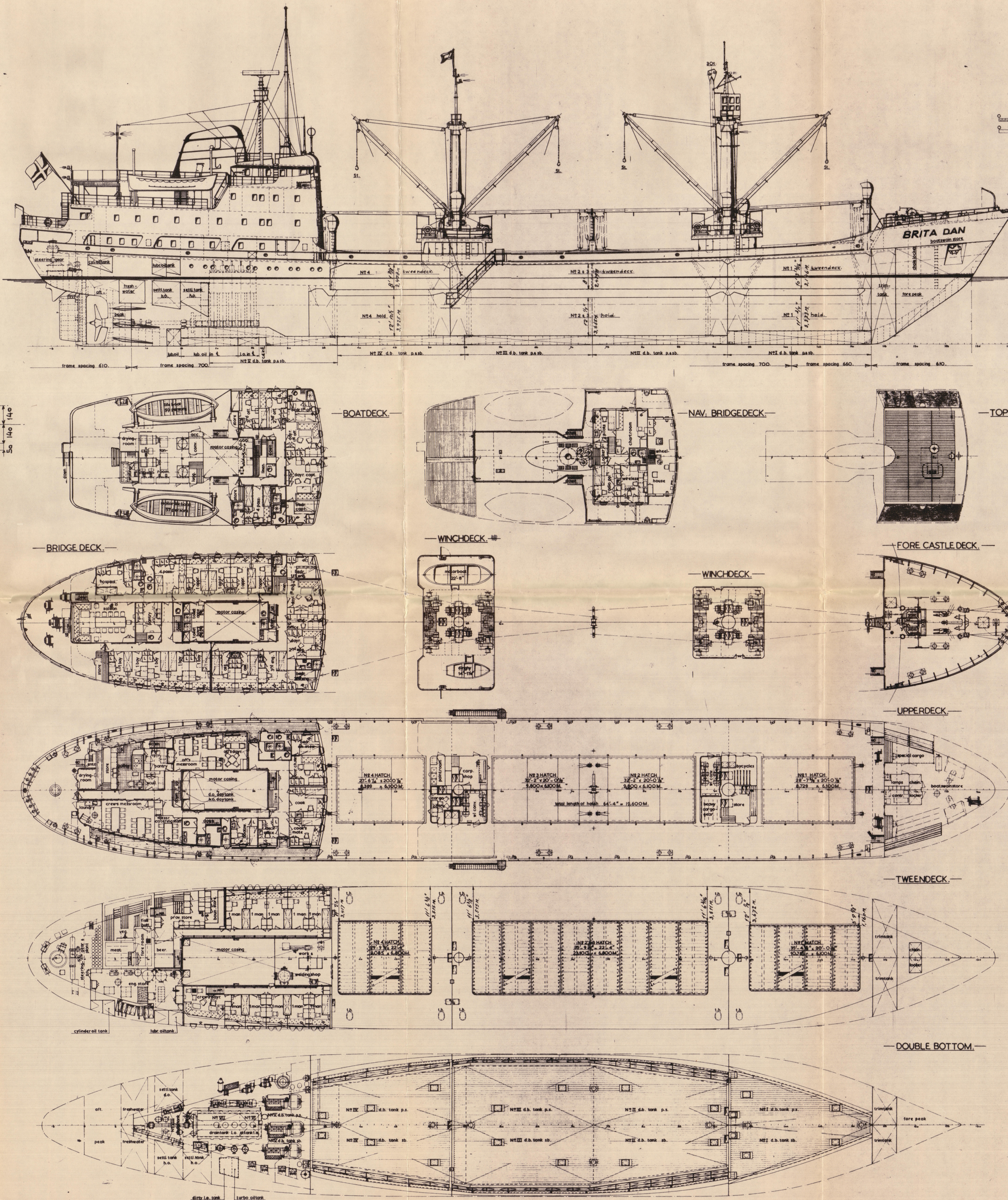
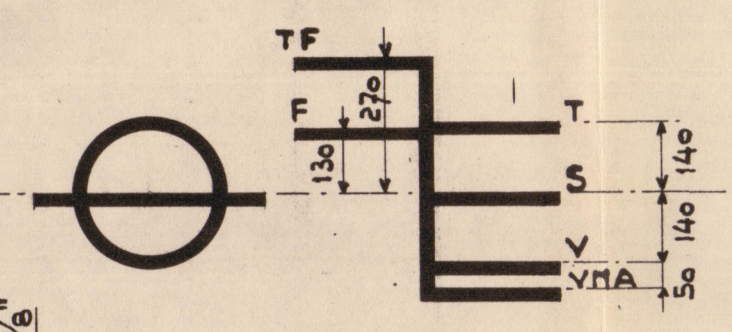
## NATIONAL

GROSS TONNAGE 3065,17 RT. = 6683,30 M<sup>3</sup>  
NET TONNAGE 1759,21 RT. = 4983,60 M<sup>3</sup>

## LOADING SCALE

DRAFT	IN	FT.	D.W.	TONS	TRIM	META-	CENTRE	DISPL.
IN	FT.	IN	PER	PER	MOM.	HEIGHT	OF	IN
M			1016 KG.	INCH	INCH	AB. BASE	BUOYANCY	TS. A
								1016 KG.
26			5000			6.60	0.80	7000
25				29	600	6.50	0.70	
24						6.40	0.60	
7 23			4000		550	6.30	0.50	6000
22						6.20	0.40	
21			3700		500	6.10	0.30	5750
20						6.00	0.20	
6 20			3000		450	5.95	0.15	5000
19						5.94	0.10	
18						5.94	0.09	
5 16			2000		350	5.94	0.09	4000
15						5.95	0.10	
14						6.00		
4 13			1000		230	6.10	0.15	3000
12						6.20	0.20	
11						6.30	0.25	
3 10						6.40	0.30	
27 9						6.50	0.35	
8						7.50	0.40	
7						8.00		
2								

1385 M<sup>3</sup> = 4' - 6 1/2"  
DRAFT FROM UNDER KEEL  
6644 M<sup>3</sup> = 21' - 9 3/4"



LOAD ON UPPERDECK	TS/M <sup>2</sup>
" TWEENDECK I	3
" " II & III	3
" " IV	3

HOLD N°	FRAMES	C.O.G. ABAFT M	C.O.G. ABOVE B.M. M	GRAIN	BALES
N°1 HOLD	92-113	-26.10	3.50	19450	17597
N°2 HOLD	73-92	-13.08	3.17	27436	26508
N°3 HOLD	53-73	+0.34	3.15	30043	28678
N°4 HOLD	33-53	+0.11	3.12	28228	26016
TOTAL HOLD		-4.34	3.23	105744	98799
N°1 TWEENDECK	92-113	-27.08	7.37	22708	21285
N°2 TWEENDECK	73-92	-13.14	7.05	20241	19351
N°3 TWEENDECK	53-73	+0.12	6.96	19087	19080
N°4 TWEENDECK	33-53	+13.56	6.98	17557	16544
TOTAL TWEENDECK		-2.24	7.10	80283	76260
GRAND TOTAL		-5.90	4.91	186037	175054

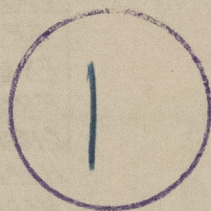
TANK N°	FRAMES	C.O.G. ABAFT M	C.O.G. ABOVE B.M. M	FUEL OIL TONS A 1016 KG.	S.W. TONS A 1016 KG.	LUB. OIL TONS A 1016 KG.
N°1 D.B. TANK	92-113	-25.37	0.75	511	551	
N°2 D.B. TANK	92-113	-25.37	0.75	511	551	
N°3 D.B. TANK	73-92	-12.86	0.45	534	574	
N°4 D.B. TANK	73-92	-12.86	0.45	534	574	
N°5 D.B. TANK	53-73	-0.30	0.35	589	647	
N°6 D.B. TANK	53-73	-0.30	0.35	589	647	
N°7 D.B. TANK	37-53	+11.93	0.15	504	544	
N°8 D.B. TANK	37-53	+11.93	0.15	504	544	
N°9 D.B. TANK	19-37	+23.85	0.72	327		
N°10 D.B. TANK	19-37	+23.85	0.72	327		
FORE PEAK	117-FORE	-39.50	7.11		163.7	
TRIM TANK	113-117	-35.28	6.28	592	63.9	
TRIM TANK	113-117	-35.28	6.28	592	63.9	
AFTER PEAK	AFT. 8	+41.49	5.75		29.3	
FRESH WATER T.K.	6-10	+30.75	5.66			14.9
FRESH WATER T.K.	6-10	+30.75	5.66			14.9
DIESEL OIL SETT. T.K.	11-15	+35.38	5.55	9.8		
HEAVY OIL SETT. T.K.	11-15	+35.38	5.55	10.8		
HEAVY OIL SETT. T.K.	15-19	+32.45	5.10	10.1		
DIESEL OIL DAVIT SERV. TANK	16-18	+32.60	10.15	1.7		
HEAVY OIL DAVIT SERV. TANK	15-16	+33.65	10.15	2.8		
LUB. OIL D.B. T.K. IN E	23-26	+27.35	0.11			3.5
LUB. OIL D.B. T.K. IN E	13-23	+31.17	0.10			2.3
LUB. OIL D.B. T.K. IN E	13-15	+34.12	0.11			2.1
LUB. OIL (SPARE) T.W. D.K.	13-15	+34.07	0.10			2.5
CYLINDER OIL T.K. T.W. D.K.	1-3	+42.49	0.15			1.0
CYLINDER OIL T.K. T.W. D.K.	3-5	+41.30	0.30			1.7
DIRTY LUB. OIL T.K. IN E.H.R.	20-22	+29.70	4.75			1.7
TURBO OIL T.K. IN E.H.R.	22-23	+28.85	4.75			1.1
TOTAL				648.8	784.4	29.8

BELONGS TO ROTTERDAM REPORT NO 52553



"BRITA DAN"

RECORDS DEPT.,  
LONDON.



*Capacity Plan*



© 2020

Lloyd's Register  
Foundation

004866-004872-0044