

S.S. Nos 727 & B

FORGED STEEL BALANCED RUDDER

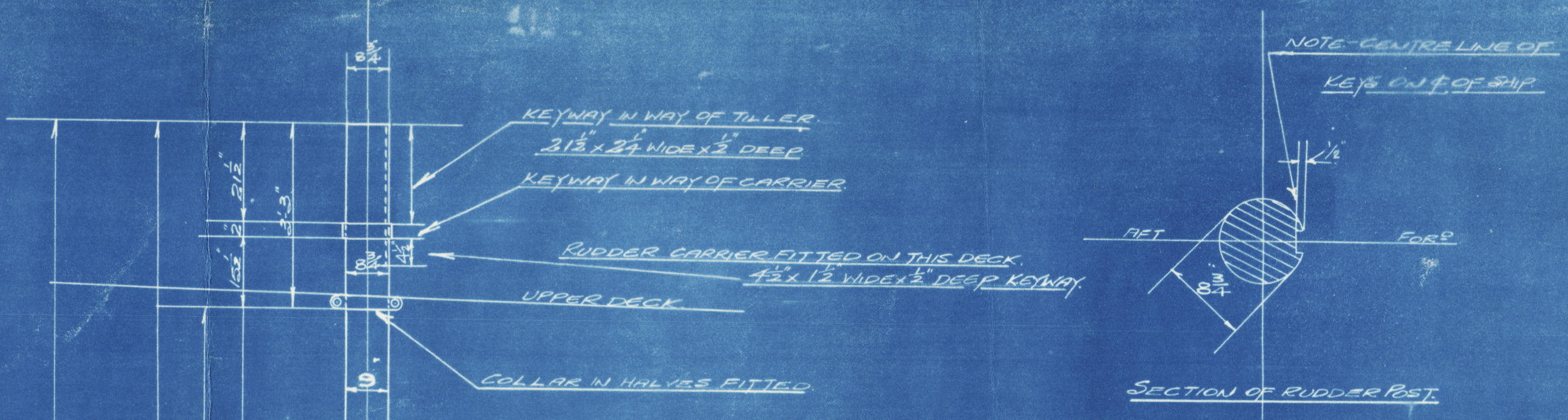
TO

LLOYDS REQUIREMENTS

FOR A SERVICE SPEED OF 10 KNOTS

SCALE 1" = 1 FOOT

not exceeding 12 knots



ARRANGEMENTS TO PREVENT RUDDER  
LIFTING TO BE TO SURVEYORS  
SATISFACTION.

BEARING BLOCK FITTED ON THIS DECK.  
SECOND DECK.  
STEEL MACHINED IN WAY OF BEARING BLOCK.  
9 DIA. ENDER HERE.

BEARING FLANGE  
2 1/2" DIA. x 2 1/2" THICK  
6 RIVETS 5 DIA. x 1 1/2" LONG  
1/2" FITCH GASKET.

BEARING SLEEVE  
CAST IRON STUFFING BOX & BEARING BLOCK.  
1 1/2" STEEL PLATE.

STRUCTURE SPECIALLY STRENGTHENED  
IN WAY OF BEARING.  
1/2" TRANSOM FLOOR PLATE.

DOUBLING TO BE FULL  
WELDED ON OUTSIDE EDGE  
AND AROUND ARM HOLES IN  
WAY OF ARMS TO BE  
CAREFULLY CUT AT CORNERS.

SIDE PLATES CONNECTED TO  
BEARING STEEL WITH RIVETS  
SPACED 5 DIA. APART  
5 DIA. C.

PLATES TO BE RIVETED  
TO ARMS WITH 1 1/2" DIA.  
RIVETS 5 DIA. APART  
5 DIA. C.

DOUBLING TO BE FULL  
WELDED ON OUTSIDE EDGE  
AND AROUND ARM HOLES IN  
WAY OF ARMS TO BE  
CAREFULLY CUT AT CORNERS.

SIDE PLATES CONNECTED TO  
BEARING STEEL WITH RIVETS  
SPACED 5 DIA. APART  
5 DIA. C.

PLATES TO BE RIVETED  
TO ARMS WITH 1 1/2" DIA.  
RIVETS 5 DIA. APART  
5 DIA. C.

DOUBLING TO BE FULL  
WELDED ON OUTSIDE EDGE  
AND AROUND ARM HOLES IN  
WAY OF ARMS TO BE  
CAREFULLY CUT AT CORNERS.

SIDE PLATES CONNECTED TO  
BEARING STEEL WITH RIVETS  
SPACED 5 DIA. APART  
5 DIA. C.

PLATES TO BE RIVETED  
TO ARMS WITH 1 1/2" DIA.  
RIVETS 5 DIA. APART  
5 DIA. C.

DOUBLING TO BE FULL  
WELDED ON OUTSIDE EDGE  
AND AROUND ARM HOLES IN  
WAY OF ARMS TO BE  
CAREFULLY CUT AT CORNERS.

SIDE PLATES CONNECTED TO  
BEARING STEEL WITH RIVETS  
SPACED 5 DIA. APART  
5 DIA. C.

PLATES TO BE RIVETED  
TO ARMS WITH 1 1/2" DIA.  
RIVETS 5 DIA. APART  
5 DIA. C.

DOUBLING TO BE FULL  
WELDED ON OUTSIDE EDGE  
AND AROUND ARM HOLES IN  
WAY OF ARMS TO BE  
CAREFULLY CUT AT CORNERS.

SIDE PLATES CONNECTED TO  
BEARING STEEL WITH RIVETS  
SPACED 5 DIA. APART  
5 DIA. C.

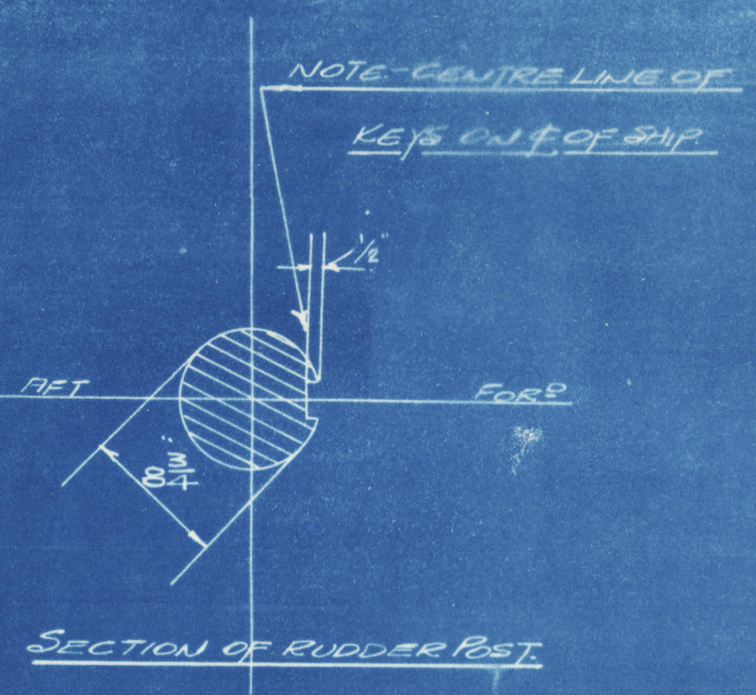
PLATES TO BE RIVETED  
TO ARMS WITH 1 1/2" DIA.  
RIVETS 5 DIA. APART  
5 DIA. C.

DOUBLING TO BE FULL  
WELDED ON OUTSIDE EDGE  
AND AROUND ARM HOLES IN  
WAY OF ARMS TO BE  
CAREFULLY CUT AT CORNERS.

SIDE PLATES CONNECTED TO  
BEARING STEEL WITH RIVETS  
SPACED 5 DIA. APART  
5 DIA. C.

PLATES TO BE RIVETED  
TO ARMS WITH 1 1/2" DIA.  
RIVETS 5 DIA. APART  
5 DIA. C.

DOUBLING TO BE FULL  
WELDED ON OUTSIDE EDGE  
AND AROUND ARM HOLES IN  
WAY OF ARMS TO BE  
CAREFULLY CUT AT CORNERS.



NOTE: CENTER LINE OF  
KEEL END OF R.P.

BEARING BLOCK FITTED ON THIS DECK.  
SECOND DECK.  
STEEL MACHINED IN WAY OF BEARING BLOCK.  
9 DIA. ENDER HERE.

BEARING FLANGE  
2 1/2" DIA. x 2 1/2" THICK  
6 RIVETS 5 DIA. x 1 1/2" LONG  
1/2" FITCH GASKET.

BEARING SLEEVE  
CAST IRON STUFFING BOX & BEARING BLOCK.  
1 1/2" STEEL PLATE.

STRUCTURE SPECIALLY STRENGTHENED  
IN WAY OF BEARING.  
1/2" TRANSOM FLOOR PLATE.

DOUBLING TO BE FULL  
WELDED ON OUTSIDE EDGE  
AND AROUND ARM HOLES IN  
WAY OF ARMS TO BE  
CAREFULLY CUT AT CORNERS.

SIDE PLATES CONNECTED TO  
BEARING STEEL WITH RIVETS  
SPACED 5 DIA. APART  
5 DIA. C.

PLATES TO BE RIVETED  
TO ARMS WITH 1 1/2" DIA.  
RIVETS 5 DIA. APART  
5 DIA. C.

DOUBLING TO BE FULL  
WELDED ON OUTSIDE EDGE  
AND AROUND ARM HOLES IN  
WAY OF ARMS TO BE  
CAREFULLY CUT AT CORNERS.

SIDE PLATES CONNECTED TO  
BEARING STEEL WITH RIVETS  
SPACED 5 DIA. APART  
5 DIA. C.

PLATES TO BE RIVETED  
TO ARMS WITH 1 1/2" DIA.  
RIVETS 5 DIA. APART  
5 DIA. C.

DOUBLING TO BE FULL  
WELDED ON OUTSIDE EDGE  
AND AROUND ARM HOLES IN  
WAY OF ARMS TO BE  
CAREFULLY CUT AT CORNERS.

SIDE PLATES CONNECTED TO  
BEARING STEEL WITH RIVETS  
SPACED 5 DIA. APART  
5 DIA. C.

PLATES TO BE RIVETED  
TO ARMS WITH 1 1/2" DIA.  
RIVETS 5 DIA. APART  
5 DIA. C.

DOUBLING TO BE FULL  
WELDED ON OUTSIDE EDGE  
AND AROUND ARM HOLES IN  
WAY OF ARMS TO BE  
CAREFULLY CUT AT CORNERS.

SIDE PLATES CONNECTED TO  
BEARING STEEL WITH RIVETS  
SPACED 5 DIA. APART  
5 DIA. C.

PLATES TO BE RIVETED  
TO ARMS WITH 1 1/2" DIA.  
RIVETS 5 DIA. APART  
5 DIA. C.

DOUBLING TO BE FULL  
WELDED ON OUTSIDE EDGE  
AND AROUND ARM HOLES IN  
WAY OF ARMS TO BE  
CAREFULLY CUT AT CORNERS.

SIDE PLATES CONNECTED TO  
BEARING STEEL WITH RIVETS  
SPACED 5 DIA. APART  
5 DIA. C.

PLATES TO BE RIVETED  
TO ARMS WITH 1 1/2" DIA.  
RIVETS 5 DIA. APART  
5 DIA. C.

DOUBLING TO BE FULL  
WELDED ON OUTSIDE EDGE  
AND AROUND ARM HOLES IN  
WAY OF ARMS TO BE  
CAREFULLY CUT AT CORNERS.

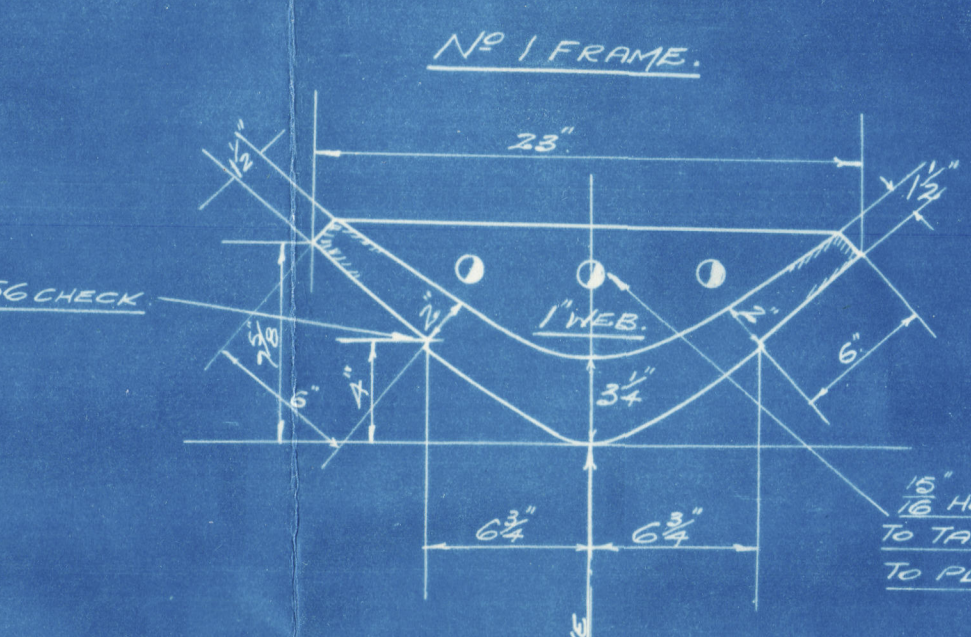
SIDE PLATES CONNECTED TO  
BEARING STEEL WITH RIVETS  
SPACED 5 DIA. APART  
5 DIA. C.

PLATES TO BE RIVETED  
TO ARMS WITH 1 1/2" DIA.  
RIVETS 5 DIA. APART  
5 DIA. C.

DOUBLING TO BE FULL  
WELDED ON OUTSIDE EDGE  
AND AROUND ARM HOLES IN  
WAY OF ARMS TO BE  
CAREFULLY CUT AT CORNERS.

PRINCIPAL DIMENSIONS.  
LENGTH B.P. 405'0"  
BREADTH MOULDED 57'11 1/2"  
DEPTH MOULDED 36'4"

NUMERALS.  
LWD - 405 x (27.83 + 8.0) = 14211  
L x (B + D) = 405 x (57.96 + 36.4) = 37085  
COMPLETE SUPERSTRUCTURE VESSEL.



NO. 1 FRAME.

NO. 2 FRAME.

NO. 3 FRAME.

NO. 4 FRAME.

NO. 5 FRAME.

NO. 6 FRAME.

NO. 7 FRAME.

NO. 8 FRAME.

NO. 9 FRAME.

NO. 10 FRAME.

NO. 11 FRAME.

NO. 12 FRAME.

NO. 13 FRAME.

NO. 14 FRAME.

NO. 15 FRAME.

NO. 16 FRAME.

NO. 17 FRAME.

NO. 18 FRAME.

NO. 19 FRAME.

NO. 20 FRAME.

NO. 21 FRAME.

NO. 22 FRAME.

NO. 23 FRAME.

S.S. Nos 727 & B  
CAST STEEL STEERN FRAME  
TO  
LLOYDS REQUIREMENTS  
SCALE 1" = 1 FT.

NO. 1 FRAME.

NO. 2 FRAME.

NO. 3 FRAME.

NO. 4 FRAME.

NO. 5 FRAME.

NO. 6 FRAME.

NO. 7 FRAME.

NO. 8 FRAME.

NO. 9 FRAME.

NO. 10 FRAME.

NO. 11 FRAME.

NO. 12 FRAME.

NO. 13 FRAME.

NO. 14 FRAME.

NO. 15 FRAME.

NO. 16 FRAME.

NO. 17 FRAME.

NO. 18 FRAME.

NO. 19 FRAME.

NO. 20 FRAME.

NO. 21 FRAME.

NO. 22 FRAME.

NO. 23 FRAME.

NO. 24 FRAME.

NO. 25 FRAME.

NO. 26 FRAME.

NO. 27 FRAME.

NO. 28 FRAME.

NO. 29 FRAME.

NO. 1 FRAME.

NO. 2 FRAME.

NO. 3 FRAME.

NO. 4 FRAME.

NO. 5 FRAME.

NO. 6 FRAME.

NO. 7 FRAME.

NO. 8 FRAME.

NO. 9 FRAME.

NO. 10 FRAME.

NO. 11 FRAME.

NO. 12 FRAME.

NO. 13 FRAME.

NO. 14 FRAME.

NO. 15 FRAME.

NO. 16 FRAME.

NO. 17 FRAME.

NO. 18 FRAME.

NO. 19 FRAME.

NO. 20 FRAME.

NO. 21 FRAME.

NO. 22 FRAME.

NO. 23 FRAME.

NO. 24 FRAME.

NO. 25 FRAME.

NO. 26 FRAME.

NO. 27 FRAME.

NO. 28 FRAME.

NO. 29 FRAME.

NO. 1 FRAME.

NO. 2 FRAME.

NO. 3 FRAME.

NO. 4 FRAME.

NO. 5 FRAME.

NO. 6 FRAME.

NO. 7 FRAME.

NO. 8 FRAME.

NO. 9 FRAME.

NO. 10 FRAME.

NO. 11 FRAME.

NO. 12 FRAME.

NO. 13 FRAME.

NO. 14 FRAME.

NO. 15 FRAME.

NO. 16 FRAME.

NO. 17 FRAME.

NO. 18 FRAME.

NO. 19 FRAME.

NO. 20 FRAME.

NO. 21 FRAME.

NO. 22 FRAME.

NO. 23 FRAME.

NO. 24 FRAME.

NO. 25 FRAME.

NO. 26 FRAME.

NO. 27 FRAME.

NO. 28 FRAME.

NO. 29 FRAME.

Unfused copy of plan  
approved 7/5/1939

LODGE REGISTERED  
DRAWING OFFICE  
No. 4968

LODGE REGISTERED  
DRAWING OFFICE  
No. 4968

LODGE REGISTERED  
DRAWING OFFICE  
No. 4968

LODGE REGISTERED  
DRAWING OFFICE  
No. 4968

LODGE REGISTERED  
DRAWING OFFICE  
No. 4968



Sir Jas Laing & Sons  
Yard No 727-8

Stern frame &  
Rudder

PLANS TRANSFERRED  
TO SISTER VESSEL

N/N  
"Pleewood"

SUNDERLAND RPT. NO: 32733

JAG SEVAK

"Beechwood"

SUNDERLAND RPT. NO. 32788



© 2020

Lloyd's Register  
Foundation

004881-004886-0004