

Copy Owners 23/7/58 *Just Copy written*

Lloyds Register of Shipping.

Index No. 39666
(For London Office only)

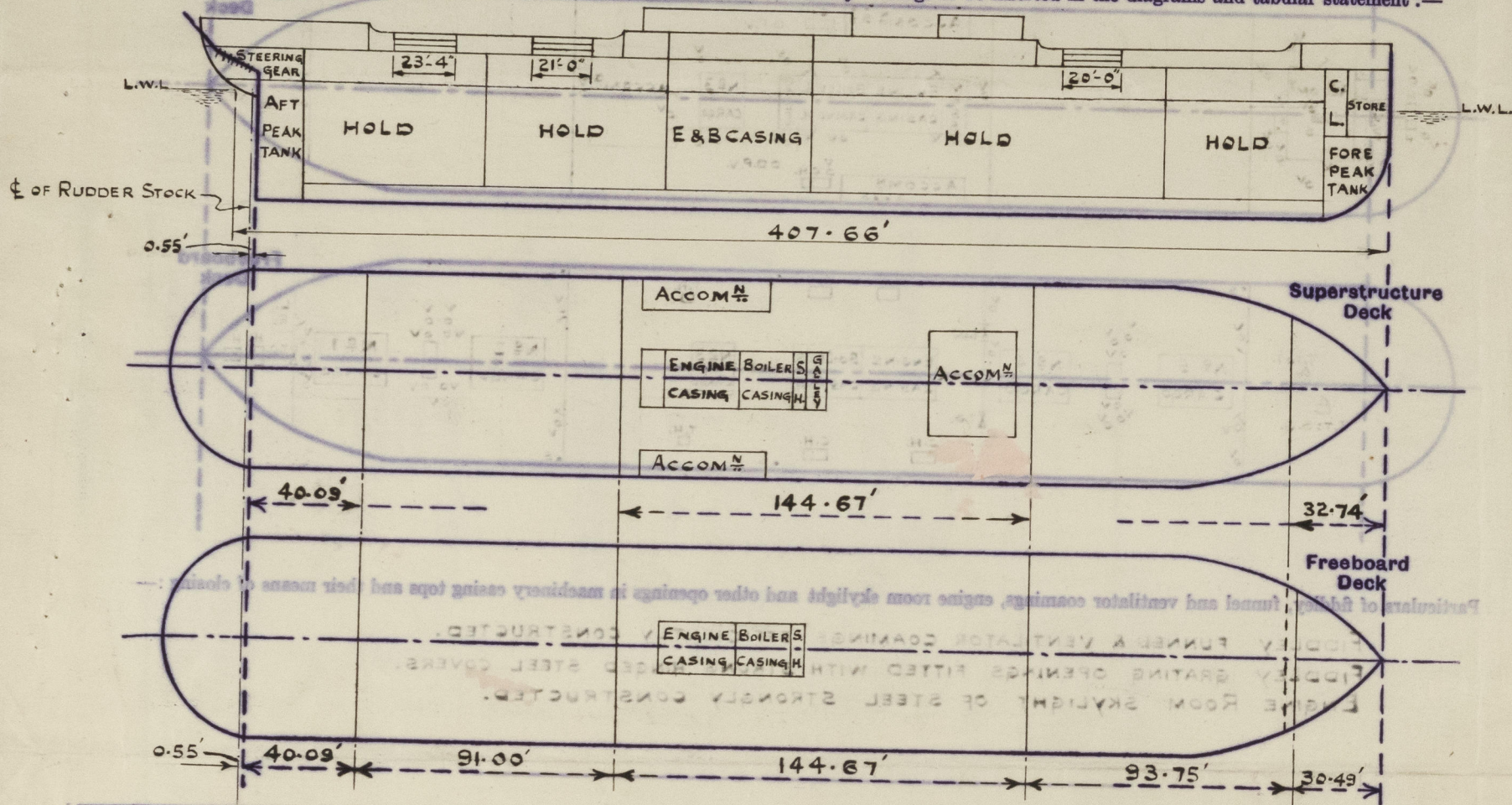
SURVEYS FOR FREEBOARD.

(CONDITIONS OF ASSIGNMENT.)

24 MAY 1948

Ship's Name "JALASHA" Port of Survey VIZAGAPATAM
 Official Number 174197 Surveyor's Signature R. H. V. Jordan
 Nationality and Port of Registry BRITISH BOMBAY Date of Survey WHILE BUILDING

Disposition and dimensions of superstructures, trunks, deckhouses and machinery casings to be inserted in the diagrams and tabular statement:—



Particulars of Superstructures, Trunks, Casings, Deckhouses.

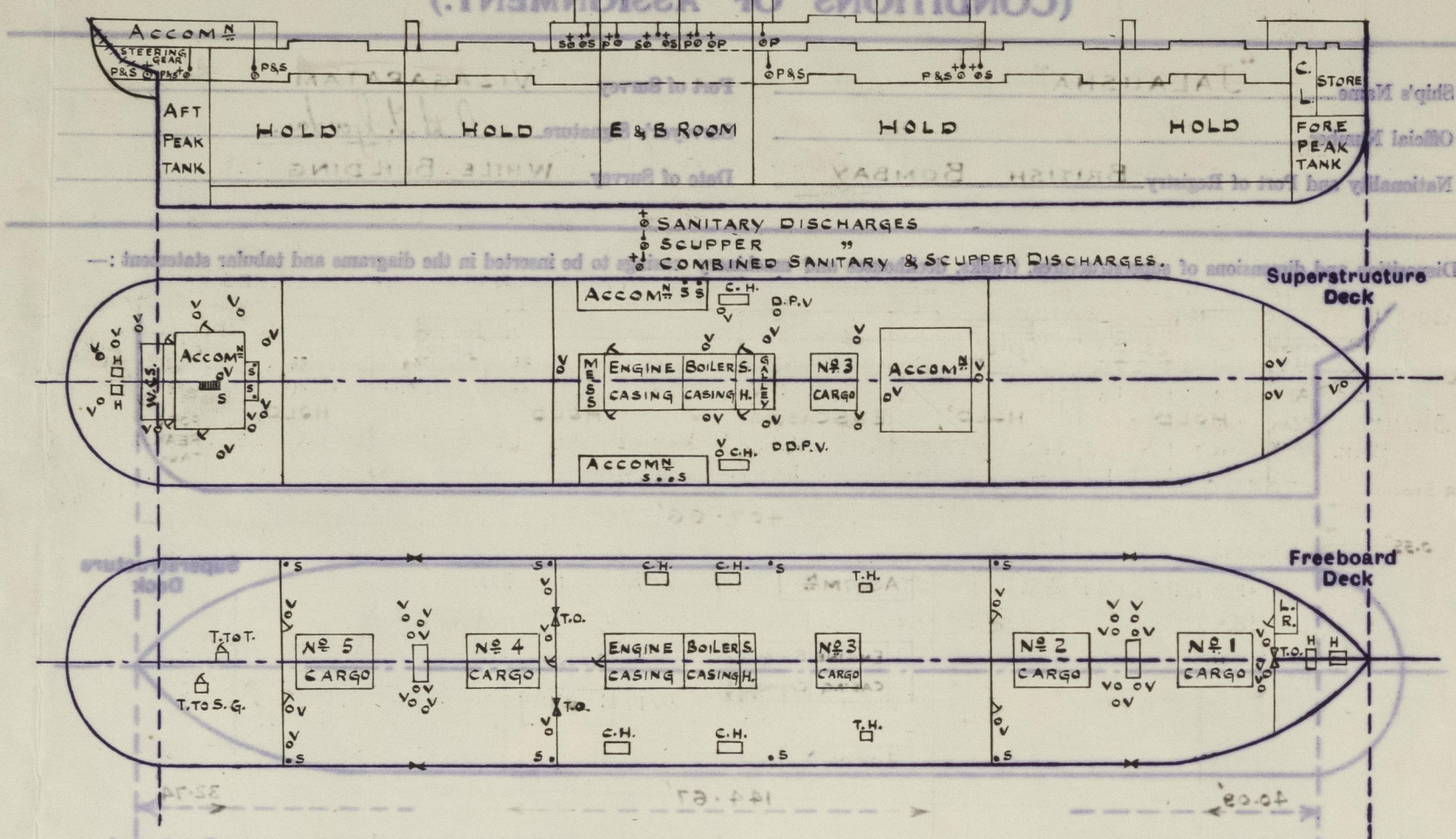
	Coaming	Plating	Stiffeners	Spacing	End Attachments of Stiffeners	Size of Openings	Height of Sills	Height of Casings
Poop Bulkhead38" ✓	.38" ✓	6"x3"x.44" O.A.	24" TO 31" ✓	ANGLES WELDED TOP & BOTTOM	2@5'-0"x2'-2 3/4"	18"	7'-6" ✓
Raised Quarter Deck Bulkhead ..								
Bridge, After Bulkhead30" ✓	.30" ✓	4"x3"x.31" O.A.	30" ✓	NONE ✓	2@5'-0"x3'-6" 1@5'-0"x3'-0"	18"	8'-0" ✓
Bridge, Forward Bulkhead ..	.44" ✓	.44" ✓	10"x3"x.44" CH.	27" TO 30" ✓	CHANNELS WELDED T&B	2@5'-0"x3'-0"	18"	8'-0" ✓
Forecastle Bulkhead30" ✓	.30" ✓	4"x3"x.31" O.A.	31" TO 34'-5"	NONE	1@5'-0"x2'-0" 1@5'-0"x4'-0"	18" ✓	7'-3" ✓
Trunk, Aft								
Trunk, Forward								
Exposed Machinery Casings on Freeboard or Raised Quarter Decks ..								
Exposed Machinery Casings on Superstructure Decks ..	.34" ✓	.30" ✓	3"x3"x.31" 3"x3"x.37"	28" ✓	BRACKET TOP CONT. BAR BOTTOM	2@5'-0"x2'-3" 2@5'-0"x2'-0"	18"	7'-6" ✓
Machinery Casings within Superstructures not fitted with Class I Closing Appliances ..	.30" & .40" ✓	.26" ✓	3"x3"x.31" 3"x3"x.37"	28" ✓	CONTIN. BAR TOP & BOTTOM	1@5'-0"x3'-0"	15"	8'-0" ✓
Deckhouses on Flush Deck Ships ..								

Particulars of Closing Appliances (state if capable of being manipulated from both sides).

Poop Bulkhead	2-WOOD DOORS MANIPULATED FROM BOTH SIDES.
Raised Quarter Deck Bulkhead ..	
Bridge, After Bulkhead	2-TONNAGE OPENINGS WITH 2 7/8" SHIFTING BOARDS IN CHANNELS (FORMED BY ANGLES WELDED TO BHD. PLATING) FOR FULL HEIGHT OF OPENING. 1-STEEL DOOR IN HALVES MANIPULATED FROM BOTH SIDES.
Bridge, Forward Bulkhead ..	2-WATERTIGHT STEEL DOORS MANIPULATED FROM BOTH SIDES.
Forecastle Bulkhead	1-TONNAGE OPENING WITH 3 1/4" SHIFTING BOARDS IN CHANNELS (FORMED BY FLANGED PLATE WELDED TO BHD. PLATING) FOR FULL HEIGHT OF OPENING. 1-STEEL DOOR MANIPULATED FROM BOTH SIDES.
Exposed Machinery Casings on Freeboard or Raised Quarter Decks ..	
Exposed Machinery Casings on Superstructure Decks ..	2-STEEL DOORS TO ENGINE ROOM & 2-STEEL DOORS TO STOKE HOLD MANIPULATED FROM BOTH SIDES.
Machinery Casings within Superstructures not fitted with Class I Closing Appliances ..	ONE STEEL DOOR TO ENGINE ROOM MANIPULATED FROM BOTH SIDES.
Deckhouses on Flush Deck Ships ..	

PARTICULARS OF PROTECTION TO OPENINGS, ETC.

The following diagrams should be used to indicate the positions of cargo and coaling hatchways, gangway, cargo and coaling ports, ventilators, companionways, etc., which would affect the seaworthiness of the ship:—



Particulars of fiddley, funnel and ventilator coamings, engine room skylight and other openings in machinery casing tops and their means of closing:—

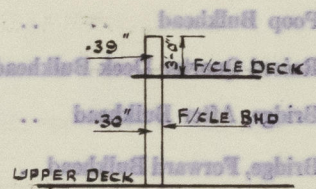
- FIDDLEY FUNNEL & VENTILATOR COAMINGS EFFICIENTLY CONSTRUCTED. ✓
- FIDDLEY GRATING OPENINGS FITTED WITH STRONG HINGED STEEL COVERS. ✓
- ENGINE ROOM SKYLIGHT OF STEEL STRONGLY CONSTRUCTED. ✓

Particulars of Flush Bunker Scuttles:—

NONE ✓

Particulars of Companionways:—

ENCLOSED STAIRWAY IN CREWS ACCOMMODATION ON POOP DECK, LEADING TO TRUNK TO STEERING GEAR COMP. 2 WOOD DOORS (1P&15) MANIPULATED FROM BOTH SIDES, 18" COAMING, STEEL TRUNK TO STEERING GEAR ON UPPER DECK. STEEL DOOR 5'-0" x 2'-0" MANIPULATED FROM BOTH SIDES, 18" COAMING. STEEL ESCAPE TRUNK FROM TUNNEL ON UPPER DECK. STEEL DOOR 5'-1" x 1'-10" MANIPULATED FROM BOTH SIDES, 18" COAMING. ✓



Particulars of Ventilators in exposed positions on freeboard and superstructure decks:—

- | | |
|---|---|
| POOP DK: 1-18" DIA. 26 1/2" x 42" COAMING TO TUNNEL ✓ | F/CLE DK: 1-8" DIA. 36" x 31" COAMING TO STORE ✓ |
| 2-6" " 32 1/2" x 31" " " FOOD STORE ✓ | UPPER DK: 12-16 DIA. 36" x 38" COAMING TO HOLDS ✓ |
| 4-12" " 32 1/2" x 38" " " CREW ✓ | 10-16" " 36" x 38" " " TWEEN DECKS. ✓ |
| 1-9" " 32 1/2" x 31" " " CREW ✓ | X 2-16" " 7-3" x 30" WITHIN OVERHANG OF F/CLE DK. ✓ |
| 2-8" " 32 1/2" x 31" " " STEERING GEAR ✓ | 3'-0" x 39" COAMING ABOVE F/CLE DK. TO TWEEN DKS. ✓ |
| 2-11" " 32 1/2" x 31" " " PASSAGE ✓ | PILOT BRIDGE: 1-18" DIA. 26 1/2" x 42" COAMING TO BRIDGE SPACE. ✓ |
| BRIDGE DK: 2-18 DIA. 26 1/2" x 42" COAMING TO SIDE BUNKER ✓ | |
| 2-18" " 30" x 42" " " BRIDGE SPACE ✓ | |
| 1-18" " 26 1/2" x 42" " " " " ✓ | |
| 2-16" " 36" x 38" " " CROSS BUNKER HOLD ✓ | |
| 2-16" " 36" x 38" " " NO. 2 HOLD ✓ | |
| 1-15" " 30" x 38" " " TWEEN DECK ✓ | |
| 1-10" " 30" x 31" " " " " ✓ | |
- ALL VENTILATORS CONSTRUCTED IN ACCORDANCE WITH THE RULES & PROVIDED WITH WOOD PLUGS & CANVAS COVERS. ✓

Particulars of Air Pipes in exposed positions on freeboard, raised quarter, or superstructure decks:—

- | | |
|--|---|
| POOP DK: 1-3" DIA. TO RUDDER TRUNK | BRIDGE DK: 2-5" DIA. TO NO. 3 D.B. TANK |
| 2-5" " " AFT PEAK TANK | 2-3" " " NO. 2 " " " " |
| UPPER DK: 3-3 1/2" " " NO. 6 D.B. TANK | UPPER DK: 4-5" " " NO. 2 " " " " |
| 2-3 1/2" " " NO. 5 " " " | 2-3" " " NO. 1 " " " " |
| BRIDGE DK: 2-5" " " NO. 5 " " " | F/CLE DK: 1-3" " " NO. 1 " " " " |
| 2-3" " " NO. 4 " " " | 3-5" " " FORE PEAK TANK |
| 2-5" " " NO. 4 " " " | |
| 3-5" " " DRY TANK | |
| 2-3 1/2" " " NO. 3 D.B. TANK. | |
- ALL AIR PIPES FITTED WITH WOOD PLUGS, COAMINGS 36" HIGH ON UPPER DK., 30" HIGH ON POOP & F/CLE DKS., AND 18" HIGH ON BRIDGE DECK. ✓

"JALAUHA"

PARTICULARS OF PROTECTION TO OPENINGS, ETC.

		HATCHWAYS ON FREEBOARD AND SUPERSTRUCTURE DECKS.								
		BRIDGE DECK		POOP DECK						
Description of Hatchway		Nº 3 CARGO	COAL HATCH	To STORE						
Dimensions of Hatchway		16'-4" x 18'-0"	2 @ 9'-0 1/2" x 3'-0"	2 @ 2'-0" x 2'-0"						
COAMINGS	Height above Deck ..	30"	30"	21"						
	Thickness { Sides ..	50"	35"	40"						
	{ Ends ..	44" ✓	35"	40" ✓						
	Stiffeners at Sides ..	9 3/4" x 3 1/2" 20A	✓	✓						
Brackets, Stays at Sides		2 1/2" DIA.	✓	✓						
HATCH BEAMS	Number	3								
	Spacing (MAXIMUM) ..	4' - 2 3/8"								
	Scantling and Sketch ..									
	TOP ANGLES	4" x 3" x 44"								
	PLATE	18 3/8" x 30"								
BOTTOM ANGLES		4" x 3" x 44"								
Fitted with Rollers										
Bearing Surface ..		4" ✓								
FORE AND AFTERS	Number									
	Spacing									
	Unsupported Lengths ..									
	Scantling* and Sketch									
Bearing Surface ..										
HATCH COVERS	Material	O.P.	O.P.	W.T. STEEL COVER						
	Thickness	2 1/2" ✓	2 1/2" ✓	25" ✓						
	How fitted	F&A ✓	ATH.	-						
	Bearing Surface ..	3"	3"	40						
Spacing of Cleats		24" ✓	24" ✓	✓						
Number of Tarpaulins		3	2	✓						
<p>*Are wood fore and afters steel shod at all bearing surfaces? ✓</p> <p>Are battens and wedges efficient and in good condition? YES</p> <p>Are tarpaulins in good condition and in accordance with rule requirements? YES</p> <p>Are lashings provided in accordance with rule requirements? YES.</p>										

Particulars of any special features :—



© 2020

Lloyd's Register
Foundation

01452/3

Particulars of Gangway Cargo and Coaling Ports :—

"JALASHA"

PARTICULARS OF PROTECTION TO OPENINGS ETC

HATCHWAYS ON FREEBOARD AND SUPERSTRUCTURE DECK

NONE

Particulars of Scuppers and Sanitary Discharge Pipes :—

SCUPPERS

IN WELLS : 3P & 3S (COLLINSON) LED OVERBOARD BELOW FREEBOARD DECK. ✓

OPENINGS 2P & 2S CUT IN STRINGER ANGLE AND SHEERSTRAKE ABOVE FREEBOARD DECK. ✓

COMPENSATION ANGLES FITTED BELOW. ✓

BRIDGE SPACE : 1P & 1S LED OVERBOARD BELOW FREEBOARD DECK, STORM VALVES FITTED. ✓

BRIDGE DECK : 1P " " ABOVE " " VALVE " ✓

POOP DECK : 1P & 1S " " BELOW " " VALVES " ✓

COMBINED SCUPPERS & SANITARY DISCHARGES

BRIDGE DECK : 1P & 2S LED OVERBOARD BELOW FREEBOARD DECK, STORM VALVES FITTED. ✓

2P & 2S " " ABOVE " " " " ✓

POOP DECK : 1P & 1S " " BELOW " " " " ✓

SANITARY DISCHARGES

BRIDGE DECK : 1P & 2S LED OVERBOARD ABOVE FREEBOARD DECK, STORM VALVES FITTED ✓

POOP DECK : 1P & 1S " " BELOW " " " " ✓

Particulars of Side Scuttles :—

4 - OFF 2P & 2S IN STEERING GEAR SPACE 12" DIA. ✓

16 - OFF 8P & 8S IN POOP SPACE 12" DIA. ✓

4 - OFF 2P & 2S IN FORECASTLE SPACE 12" DIA. ✓

ALL OF SUBSTANTIAL CONSTRUCTION & FITTED WITH HINGED DEADLIGHTS. ✓

Vertical distance of Sill of lowest Side Scuttle above top of keel 31'-6 1/2" ✓

Particulars of Guard Rails :—

POOP & FORECASTLE DECKS :— FITTED WITH 3 RAIL STANCHIONS (TOP 1 1/4" DIA. OTHERS 7/8" DIA.) 3'-6" HIGH. STANCHIONS SPACED ABOUT 5'-0" APART. ✓

BRIDGE DECK :— FITTED WITH 3 RAIL STANCHIONS (TOP 1 1/4" DIA. OTHERS 7/8" DIA.) 3'-6" HIGH. CLEAR OF SIDEHOUSES. STANCHIONS SPACED ABOUT 5'-0" APART. ✓

UPPER DECK :— STEEL BULWARKS 3'-6" HIGH. SUBSTANTIALLY CONSTRUCTED WITH PORTABLE RAILS IN WAY OF NOS 2, 4 & 5 HATCHES. ✓

Particulars of Gangways, Lifelines, etc. :—

LIFELINES :— FITTED IN FORE & AFT WELLS FOR PROTECTION OF CREW. ✓

Particulars of Freeing Arrangements.						
	Length of Bulwark	Height of Bulwark	Size of Freeing Ports	Number each side	Area each side	Rule area each side
After Well ..	91'-0"	3'-6"	OPEN RAILS IN WAY OF N ^o 4 HATCH 21'-0" N ^o 5 HATCH 23'-4"	✓	✓	18.2 ♂
Forward Well ..	91'-6"	3'-6"	N ^o 2 HATCH 20'-0"	✓	✓	18.3 ♂
State position of each freeing port { After Well :—				✓		
(F. and A. position and height above deck edge) { Forward Well :—				✓		
State whether the freeing ports are fitted with shutters, bars, or rails, and give particulars of such :—				✓		
Additional area where sheer is less than standard.						

PARTICULARS OF PROTECTION TO OPENINGS, ETC.

HATCHWAYS ON FREEBOARD AND SUPERSTRUCTURE DECKS.

Description of Hatchway	No 1 CARGO	No 2 CARGO	No 3 CARGO	No 4 CARGO	No 5 CARGO	COALING HATCH	TRIMMING HATCH	CHAIN LOCKER	STORE UNDER CASTLE
Dimensions of Hatchway	24'-9"x18'-0"	30'-4"x18'-0"	16'-4"x18'-0"	30'-4"x18'-0"	25'-8"x18'-0"	2@6'-8"x3'-0"	2@2'-1"x2'-6"	2'-0"x3'-6"	4'-0"x3'-0"
COAMINGS	Height above Deck	30"	30"	9"	30"	30"	10"x5" COAMINGS		
	Thickness	.50"	.50"	.375"	.50"	.50"			
	Stiffeners	9 3/4"x3 1/2" O.A.			9 3/4"x3 1/2" O.A.		3 1/2"x3 1/2"x3 1/8" BOTTOM ANGLE		
	Brackets, Stays	2 1/2" DIA.	2 1/2" DIA.		2 1/2" DIA.	2 1/2" DIA.	1"x1/2" HALF ROUND E.W. AT TOP		
HATCH BEAMS	Number	4	5	3	5	4			
	Spacing (MAXIMUM)	5'-0 1/2"	5'-1 5/8"	4'-1"	5'-1 5/8"	5'-2 3/4"			
	Scantling and Sketch	4"x3"x50"	4"x3"x50"	4"x3"x50"	4"x3"x50"	4"x3"x50"			
	Bearing Surface	4"	4"	4"	4"	4"			
FORE AND AFTERS	Number	2 1/2"x1 1/4"	9"x3" CHANNEL		9 3/4"x3 1/2" O.A. CUT FROM 12"x3 1/2"				
	Spacing								
	Unsupported Lengths								
	Scantling and Sketch								
HATCH COVERS	Material	O.P.	O.P.	O.P.	O.P.	O.P.	O.P.	O.P.	O.P.
	Thickness	2 1/2"	2 1/2"	2 1/2"	2 1/2"	2 1/2"	2 1/2"	2 1/2"	2 1/2"
	How fitted	F&A	F&A	F&A	F&A	F&A	F&A	F&A	F&A
	Bearing Surface	3"	3"	3"	3"	3"	3"	3"	3"
Spacing of Cleats	24"	24"	24"	24"	24"	24"	12"/18"	13"/18"	15"/18"
Number of Tarpaulins	3	3	1	3	3	1	1	1	1
*Are wood fore and afters steel shod at all bearing surfaces? YES									
Are battens and wedges efficient and in good condition? YES									
Are tarpaulins in good condition and in accordance with rule requirements? YES									
Are lashings provided in accordance with rule requirements? YES									

Particulars of any special features:—

Vertical distance of Bill of lowest Side Scuttles above top of keel

Particulars of Guard Rails:—

POOP & FORECASTLE DECKS: FITTED WITH 3 RAIL STANCHIONS (TOP 1 1/4" DIA. OTHERS 1 1/2" DIA.) 3'-6" HIGH. STANCHIONS SPACED ABOUT 5'-0" APART.

BRIDGE DECK: FITTED WITH 3 RAIL STANCHIONS (TOP 1 1/4" DIA. OTHERS 1 1/2" DIA.) 3'-6" HIGH. CLEAR OF SIDEWALKS. STANCHIONS SPACED ABOUT 5'-0" APART.

UPPER DECK: STEEL BULKHEADS 3'-6" HIGH. SUBSTANTIALLY CONSTRUCTED WITH PORTABLE RAILS IN WAY OF NO. 2 & 3 HATCHES.

Particulars of Gangways, Ladders, etc.:—

LIFELINES: FITTED IN FORE & AFT WELLS FOR PROTECTION OF CREW.

Endorsement at first survey and at surveys for renewal of Certificate:—

The fittings and appliances are in accordance with the particulars shown on this form (or as now modified) and are in good condition.

Particulars of Freeing Arrangements.

Location	Length of Bulkhead	Height of Bulkhead	Size of Freeing Ports	Number each side	Area each side	Ratio area each side
Forward Well	21'-0"	3'-0"	OPEN RAILS IN WAY OF NO. 2 HATCH 24"-0"	✓	✓	18'-0"
Aft Well	21'-0"	3'-0"	OPEN RAILS IN WAY OF NO. 3 HATCH 24"-0"	✓	✓	18'-0"

State position of each freeing port (F. and A. position and height above deck edge):

State whether the freeing ports are fitted with shutters, bars, or rails, and give particulars of each:—

Additional area where there is less than standard.