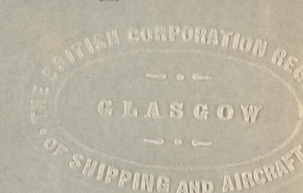


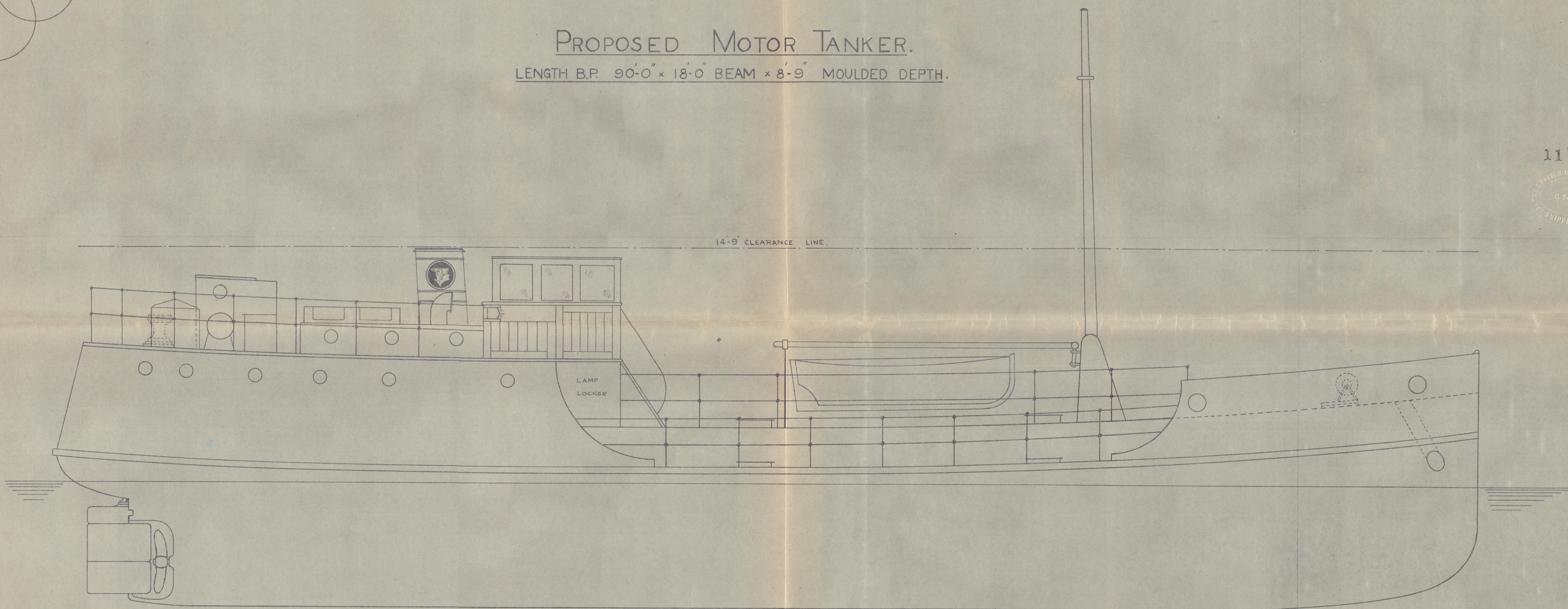
PROPOSED MOTOR TANKER.

LENGTH B.P. 90'-0" x 18'-0" BEAM x 8'-9" MOULDED DEPTH.

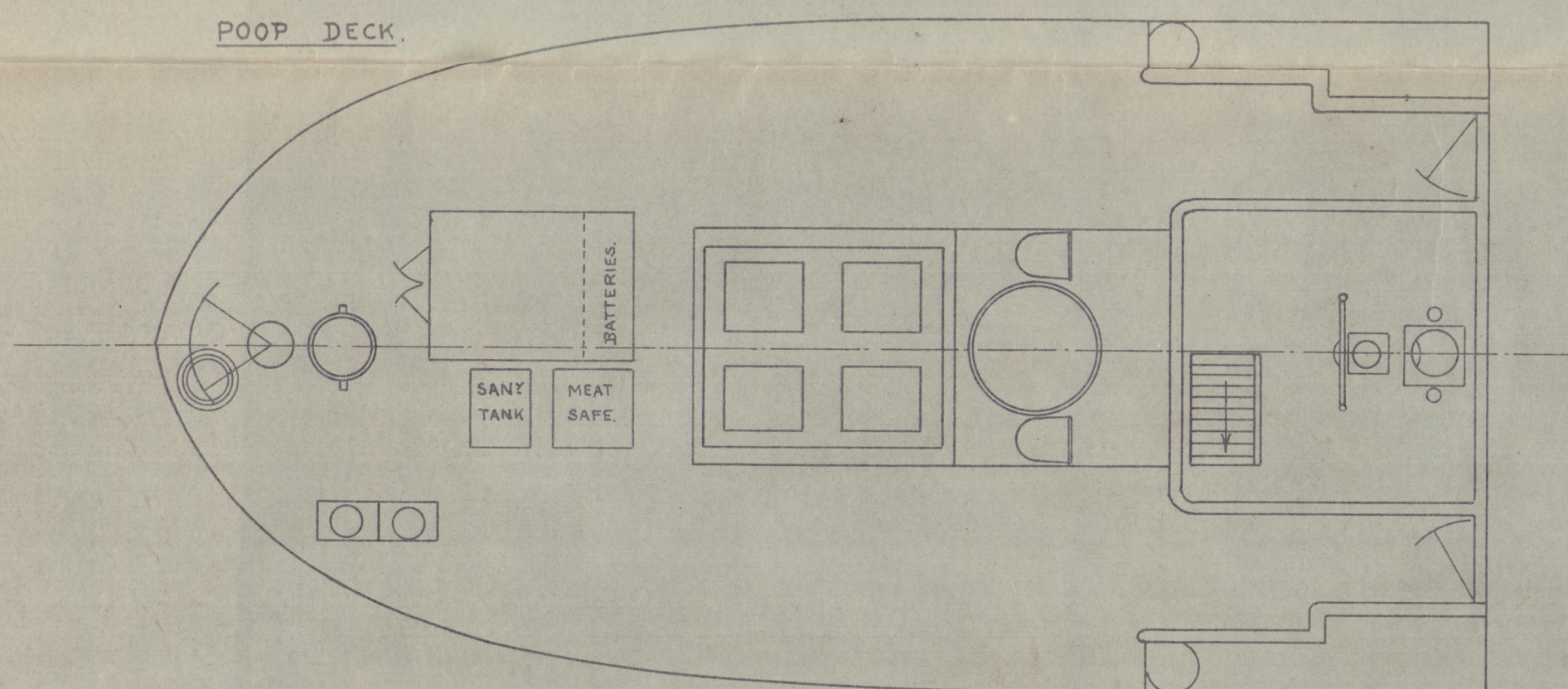
11 DEC 1934



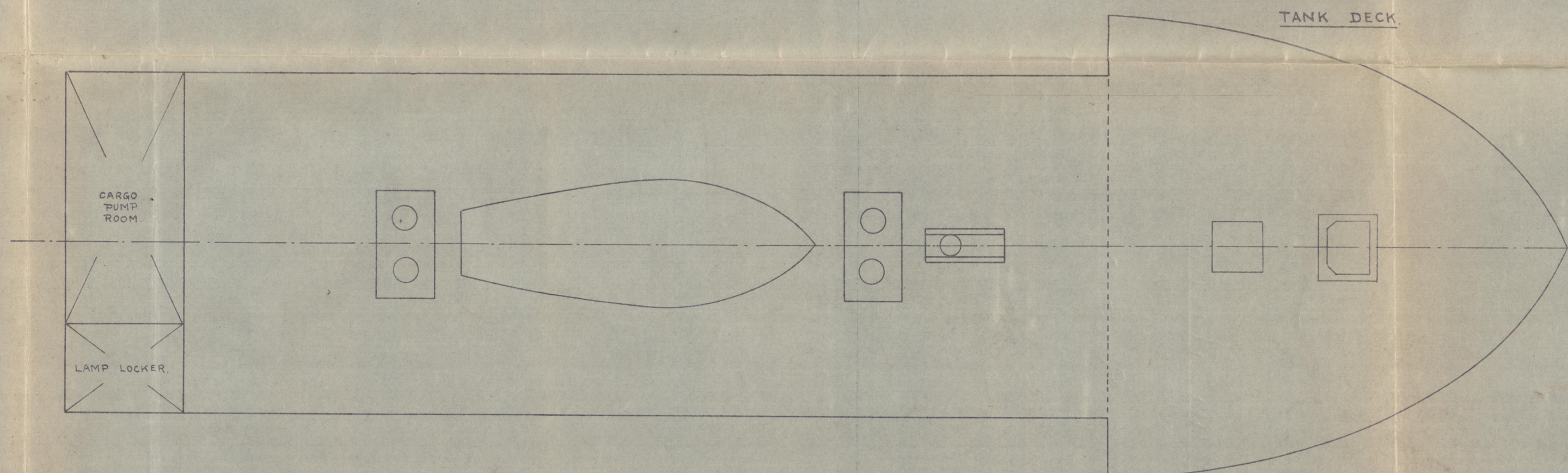
14'-9" CLEARANCE LINE.



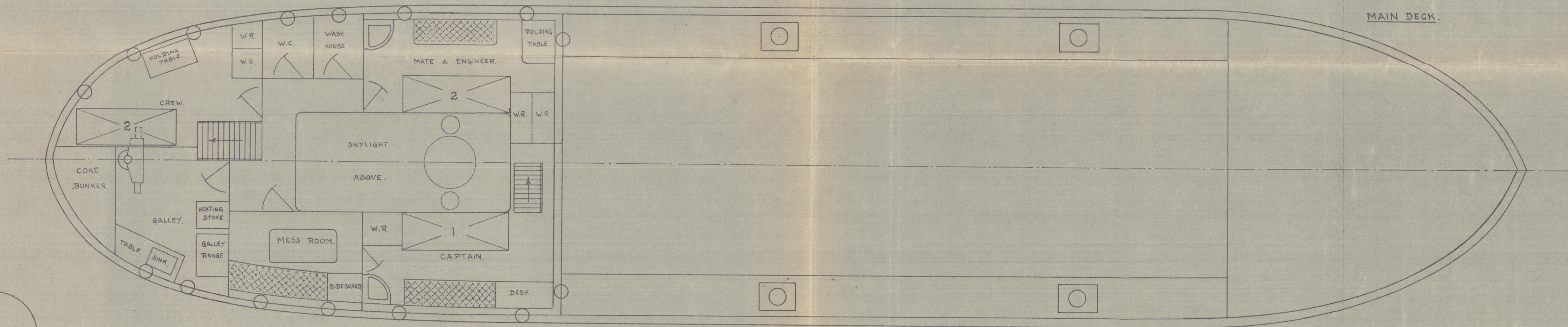
POOP DECK.



TANK DECK.



MAIN DECK.



005013-005019-0012

General Arrgt.

Drop Tanker 90' x 18' x 8' 9".

New Howhedge Ironworks No. 569.

London. 14. 12. 21

S^r M BEN OLIVER

Drop Tanker 90' x 18' x 8' 9".

© 2021



Lloyd's Register
Foundation

005013-005019-0012