

Lloyd's Register of Shipping.
SURVEYS FOR FREEBOARD.
(CONDITIONS OF ASSIGNMENT.)

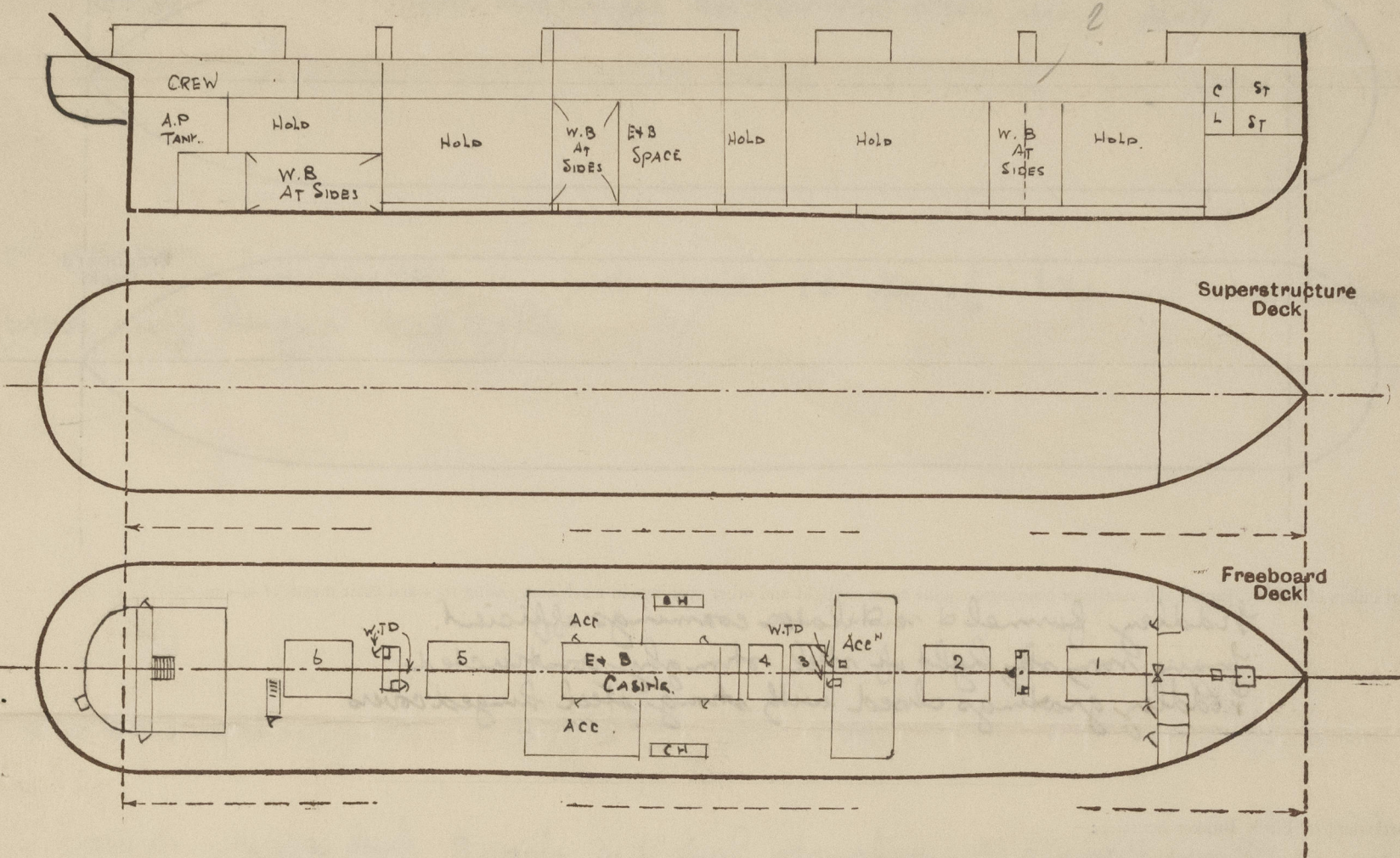
Index No. 37283
(For London Office only).

9 JUN 1943

GRK. REPORT NO 22648.

Ship's Name **SELECTOR** **EX EMPIRE SERVICE** Port of Survey **GREENOCK**
Official Number **169505** Surveyor's Signature **Kenneth Lyle**
Nationality and Port of Registry **BRITISH, GREENOCK.** Date of Survey **WHILE BUILDING 1943.**

Disposition and dimensions of superstructures, trunks, deckhouses and machinery casings to be inserted in the diagrams and tabular statement :—



| Particulars of Superstructures, Trunks, Casings, Deckhouses. | | | | | | | | |
|--|--|---------|----------------|----------|--------------------------------------|----------------------------------|-----------------|-------------------|
| | Coaming | Plating | Stiffeners | Spacing | End Attachments of Stiffeners | Size of Openings | Height of Sills | Height of Casings |
| Poop Bulkhead | ✓ | | | | | | | |
| Raised Quarter Deck Bulkhead ... | ✓ | | | | | | | |
| Bridge, After Bulkhead | ✓ | | | | | | | |
| Bridge, Forward Bulkhead | ✓ | | | | | | | |
| Forecastle Bulkhead | 30 | 30 | 5 x 3 x 5/16 | 30" | NONE | 3 @ 5' x 2'-3" 1 @ 5' x 4'-1" | 18" | 7'-6" |
| Trunk, Aft | ✓ | | | | | | | |
| Trunk, Forward | ✓ | | | | | | | |
| Exposed Machinery Casings on Freeboard or Raised Quarter Decks ... | 32 | 32 | 3 1/2 x 3 x 40 | 31" | BEKTS AT TOP CONTINUOUS AT BOTTOM | 2 @ 5' x 2' | 21" | 7'-6" |
| Exposed Machinery Casings on Superstructure Decks | ✓ | | | | | | | |
| Machinery Casings within Superstructures not fitted with Class I Closing Appliances | 30 | 30 | 3 x 3 x 30 | 24 x 30" | BEKTS AT TOP | 2 @ 5' x 2'-3" | 18" | 7'-6" |
| Deckhouses on Flush Deck Ships ... | | | | | | | | |
| Particulars of Closing Appliances (state if capable of being manipulated from both sides). | | | | | | | | |
| Poop Bulkhead | ✓ | | | | | | | |
| Raised Quarter Deck Bulkhead ... | ✓ | | | | | | | |
| Bridge, After Bulkhead | ✓ | | | | | | | |
| Bridge, Forward Bulkhead | ✓ | | | | | | | |
| Forecastle Bulkhead | STEEL PLATE FITTED WITH HOOK BOLTS NOT PASSING THRO' BHD BOLTS 15" APART ✓ | | | | | | | |
| Exposed Machinery Casings on Freeboard or Raised Quarter Decks ... | ONE STEEL DOOR Y 2. WOOD DOORS WORKABLE FROM BOTH SIDES. | | | | | | | |
| Exposed Machinery Casings on Superstructure Decks | STEEL DOORS, WORKABLE FROM BOTH SIDES ✓ | | | | | | | |
| Machinery Casings within Superstructures not fitted with Class I Closing Appliances | ✓ | | | | | | | |
| Deckhouses on Flush Deck Ships ... | ✓ | | | | | | | |
| | STEEL DOORS WORKABLE FROM BOTH SIDES ✓ | | | | | | | |



© 2020

Lloyd's Register
Foundation

PARTIAL

Name of Ship EMPIRE SERVICE

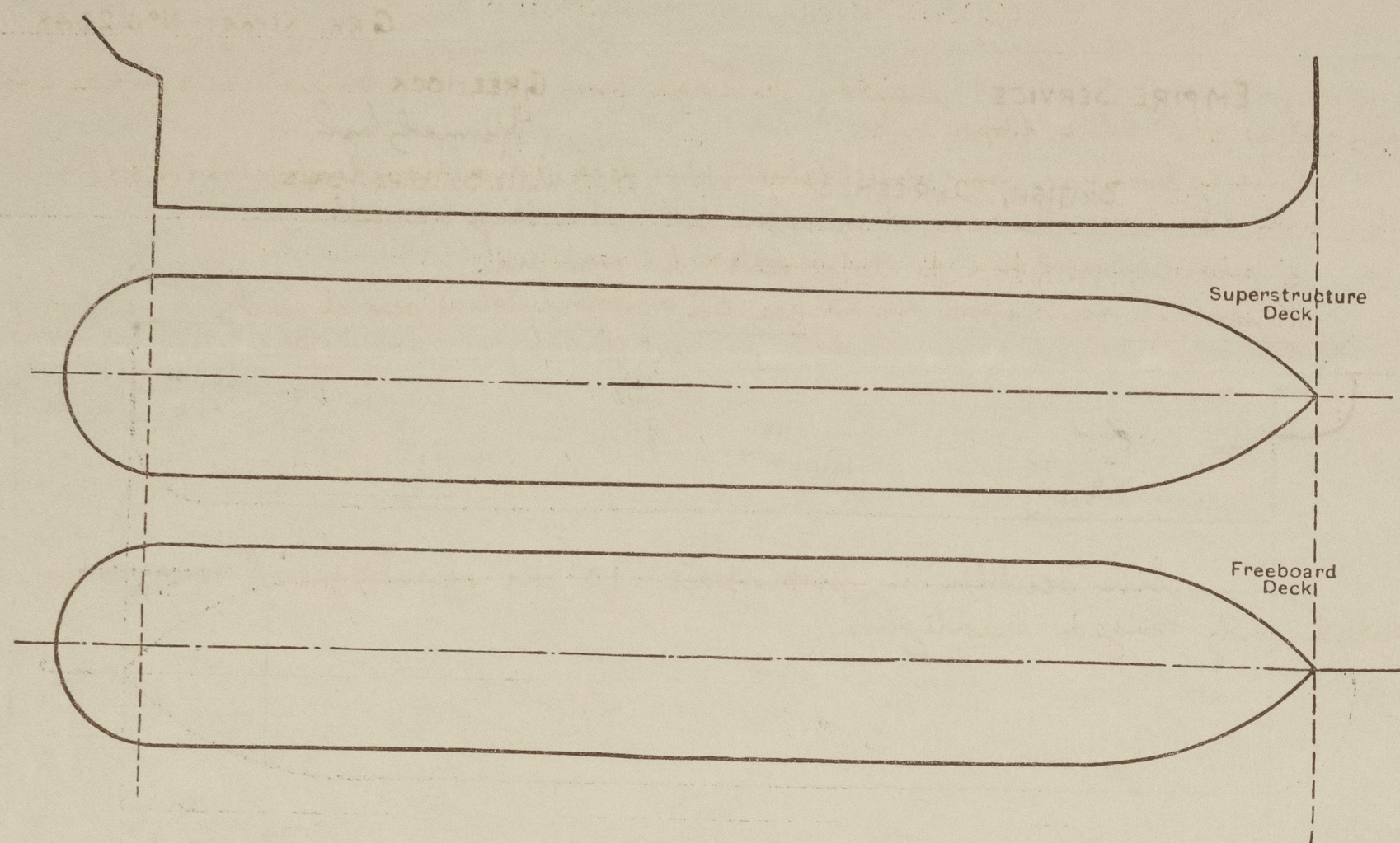
Freeboard Report Examined

(Date) 6.11.57Signed G. L. L. L. 0131 2/3

NGS, ETC.

The following diagrams should be used to in-
which would affect the seaworthiness of the ship:-

and coaling ports, ventilators, companionways, etc.,



Particulars of hatches, funnel and ventilator coamings, engine room skylight and other openings in machinery casing tops and their means of closing:-

Hatchway funnel & ventilator coamings efficient.
Engine room skylight of steel strongly constructed
Hatchway gratings closed with strong steel hinged covers

Particulars of Flush Bunker Scuttles:-

None.

Particulars of Companionways:-

Entrance to Accommodation in poop from deckhouse fitted with hardwood doors 5' x 2' with coaming 22" above deck, hatch to store and stowage inside saloon house having steel V.T. door 18" coaming. Entrance to defence personnel aft of 1st hatch having hardwood door with 21" coaming. Entrance to hold from inside main house having steel door with 21" coaming. Aft from trunk inside main house, having steel V.T. door 4' x 6" x 22" with 21" coaming. Amidships escape trunk aft end of saloon house fitted with hinged V.T. door with 18" coaming.

Particulars of Ventilators in exposed positions on freeboard and upper decks:-

| Deck | No. | Size | Height | Coaming | Remarks |
|------------|-----|----------|---------------------|---------------|---------|
| Upper Deck | 2 | 18" dia. | to hold | coaming 36x40 | |
| | 1 | 10" | to hold | 36x42 | |
| | 6 | 20" | to hold | 36x40 | |
| | 4 | 26" | On top of Mainhouse | 30x40 | |
| | 2 | 8" | stern gear | 36x30 | |
| | 4 | 8" | act. off | 36x30 | |
| | 4 | 9" | gun's | 36x32 | |
| | 4 | 10" | passage | 36x32 | |
| | 2 | 6" | gun's work | 36x34 | |
| | 2 | 12" | gun's work | 36x34 | |
| | 2 | 6" | bunker cladding | 36x30 | |
| | 2 | 6" | rocket bunker | 36x30 | |
| | 2 | 10" | by the | 36x32 | |
| | 2 | 15" | refrig machy. | 36x38 | |
| | 1 | 6" | cabin store | 36x30 | |

all ventilators built in accordance with
the Bureau's rule & provided with wood
plugs & canvas covers.

Particulars of Air Pipes in exposed positions on freeboard, raised quarter and upper decks:-

| Deck | No. | Size | Height | Remarks |
|------------|-----|----------|----------------------------|----------|
| Upper Deck | 1 | 1-3" dia | air pipe to fore peak tank | 18" high |
| | 1 | 4" | " " double bottom | 18" |
| | 6 | 3" | " " " " | 30" |
| | 6 | 2 1/2" | " " " " | 30" |
| | 8 | 4" | " " " " | 30" |
| | 6 | 4" | " " " " | 30" |
| | 2 | 2 1/2" | " " " " | 30" |
| | 2 | 3" | " " " " | 30" |
| | 4 | 2" | " " " " | 30" |

All air pipes provided with wood plugs.

EMPIRE SERVICE

Particulars of Gangway Cargo and Coaling Ports:-

None

Particulars of Scuppers and Sanitary Discharge Pipes:-

Sanitary discharges from upper deck led overboard & fitted with strong valves 6'-0" below upper deck.

Sanitary discharges from spaces below upper deck led overboard above second deck & fitted with two automatic non-return valves both valves being accessible.

3" pipe scuppers fitted to upper deck & led overboard.

No sanitary nor scupper discharges led overboard below second deck.

Particulars of Side Scuttles:-

Side scuttles in poop space 10" dia of substantial construction & fitted with hinged deadlights.

Vertical distance of Sill of lowest Side Scuttle above top of keel 37'-0"

Particulars of Guard Rails:-

Upper deck 3 rails 3'-6" high stanchions 5'-0" apart except in way of deckhouse amidships where steel bulwark substantially constructed is fitted. & freeing ports 4'-0" x 9" are cut on each side of the vessel.

Forecastle deck 2 rails & stanchions 3'-3" high stanchions about 5'-0" apart

Particulars of Gangways, Lifelines, etc.:-

Provision for lifelines fitted all fore & aft on both sides of vessel.

Particulars of Freeing Arrangements.

| | Length of Bulwark | Height of Bulwark | Size of Freeing Ports | Number each side | Area each side | Rule area each side |
|------------------|-------------------|-------------------|-----------------------|------------------|----------------|---------------------|
| After Well ... | | | | | | |
| Forward Well ... | | | | | | |

State position of each freeing port ... After Well:-

(F. and A. position and height above deck edge) Forward Well:-

State whether the freeing ports are fitted with shutters, bars, or rails, and give particulars of such:-

Additional area where sheer is less than standard.



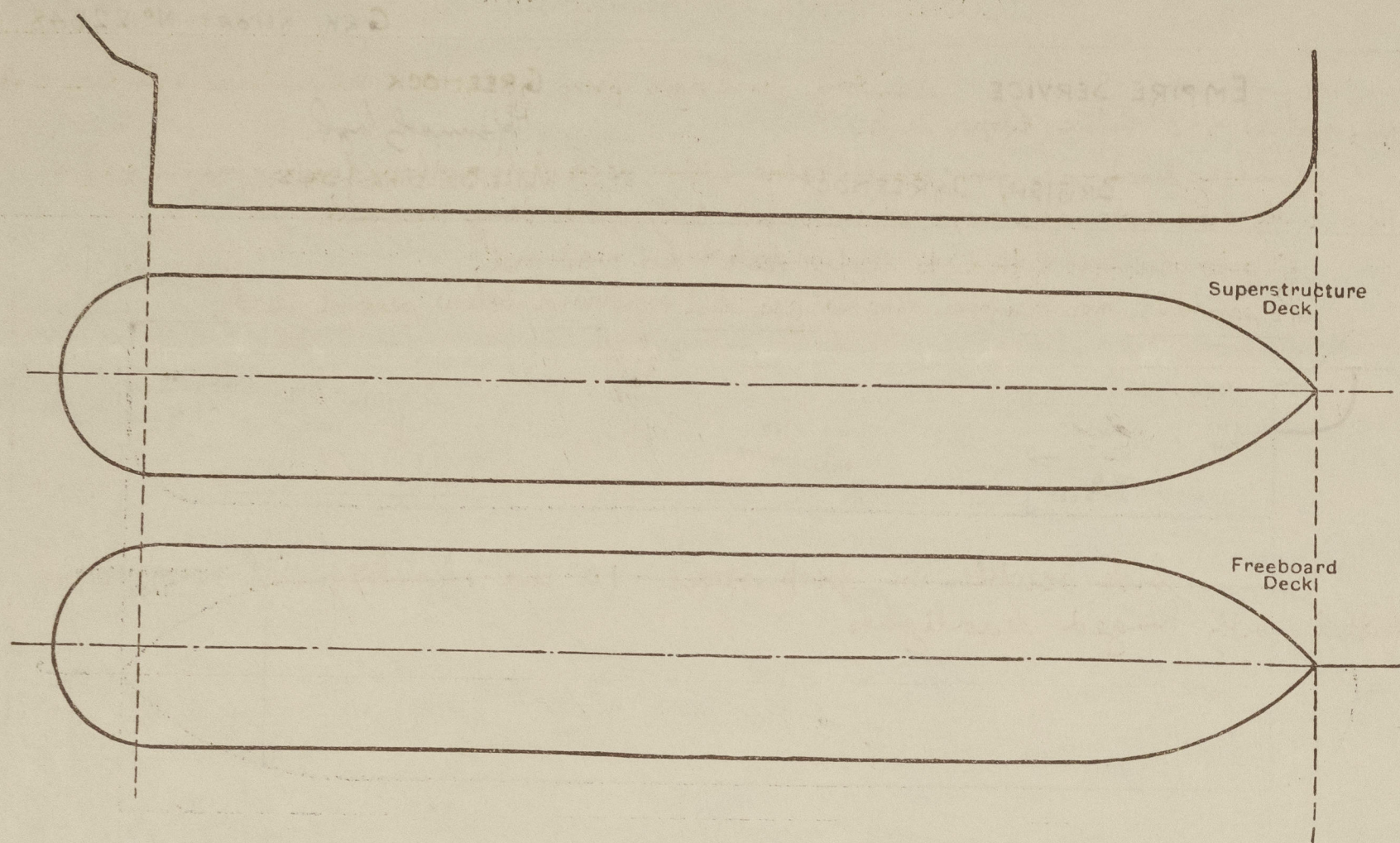
© 2020

Lloyd's Register
Foundation

0131 3/3

PARTICULARS OF PROTECTION TO OPENINGS, ETC.

The following diagrams should be used to indicate the positions of cargo and coaling hatchways, gangway, cargo and coaling ports, ventilators, companionways, etc., which would affect the seaworthiness of the ship:—



Particulars of fiddle, funnel and ventilator coamings, engine room skylight and other openings in machinery casing tops and their means of closing:—

Fiddle funnel & ventilator coamings efficient.
Engine room skylight of steel strongly constructed
Fiddle gratings closed with strong steel hinged covers

Particulars of Flush Bunker Scuttles:—

None.

Particulars of Companionways:—

Entrance to Accommodation in poop from deckhouse fitted with handwood doors 5' x 2' with coaming 22" above deck, hatch to streamer deck inside splry house having steel V.T. door 18" coaming, ~~entrance to defence personnel~~ aft of 6 hatch having handwood door with 21" coaming. Entrance to hold for from inside mast house having steel door with 21" coaming. Aft from trunk inside mast house, having steel V.T. door 4'-6" x 24" & 21" coaming. ~~Entrance to escape trunk~~ aft end of saloon house fitted with light V.T. door with 18" coaming.

Particulars of Ventilators in exposed positions on freeboard and superstructure decks:—

| Deck | No. | Coaming | Dia. | to hold | Coaming |
|------------|-----|---------|------|---------------------|---------|
| Upper Deck | 2 | 18" | 10" | to hold | 36x40 |
| | 1 | " | " | to hold | 36x42 |
| | 6 | " | 20" | to hold | 36x40 |
| | 4 | " | 26" | On top of Masthouse | 30x40 |
| | 2 | " | 8" | stern gear | 36x30 |
| | 9 | " | 8" | act. aft | 36x30 |
| | 4 | " | 9" | gunners | 36x32 |
| | 4 | " | 10" | passages | 36x32 |
| | 2 | SW | 6" | gunners | 36 high |
| | 2 | Cowl | 12" | gunners | 36x34 |
| | 2 | " | 6" | gunners | 36x30 |
| | 3 | " | 6" | gunners | 36x30 |
| | 3 | " | 10" | gunners | 36x32 |
| | 2 | " | 15" | gunners | 36x38 |
| | 1 | " | 6" | gunners | 36x30 |

all ventilators built in accordance with the Bureau's rule & rounded with wood plugs & canvas covers.

Particulars of Air Pipes in exposed positions on freeboard, raised quarter, and superstructure decks:—

| Deck | No. | Dia. | to hold | Coaming |
|------------|-----|--------|---------|----------|
| Upper Deck | 1 | 1-3" | to hold | 18" high |
| | 1 | 4" | to hold | 18" |
| | 6 | 3" | to hold | 30" |
| | 6 | 2 1/2" | to hold | 30" |
| | 8 | 4" | to hold | 30" |
| | 6 | 4" | to hold | 30" |
| | 2 | 2 1/2" | to hold | 30" |
| | 2 | 3" | to hold | 30" |
| | 4 | 2" | to hold | 30" |

all air pipes provided with wood plugs.

EMPIRE SERVICE

Particulars of Gangway Cargo and Coaling Ports:—

None

Particulars of Scuppers and Sanitary Discharge Pipes:—

Sanitary discharges from upper deck led overboard & fitted with strong valves 6'-0" below upper deck.

Sanitary discharges from spaces below upper deck led overboard above second deck & fitted with two automatic non-return valves both valves being accessible.

3" pipe scuppers fitted to upper deck & led overboard.

No sanitary nor scupper discharges led overboard below second deck.

Particulars of Side Scuttles:—

Side scuttles in poop space 10" dia of substantial construction & fitted with hinged deadlights.

Vertical distance of Sill of lowest Side Scuttle above top of keel 37'-0"

Particulars of Guard Rails:—

Upper deck 3 rails 3'-6" high stanchions 5'-0" apart except in way of deckhouse amidships where steel bulwark substantially constructed is fitted. 6 freeing ports 4'-0" x 9" are cut on each side of the vessel.

Forecastle deck 2 rails & stanchions 3'-3" high stanchions about 5'-0" apart

Particulars of Gangways, Lifelines, etc.:—

Providing for lifelines fitted all fore & aft on both sides of vessel.

Particulars of Freeing Arrangements.

| | Length of Bulwark | Height of Bulwark | Size of Freeing Ports | Number each side | Area each side | Rule area each side |
|------------------|-------------------|-------------------|-----------------------|------------------|----------------|---------------------|
| After Well ... | | | | | | |
| Forward Well ... | | | | | | |

State position of each freeing port ... After Well:—

(F. and A. position and height above deck edge) Forward Well:—

State whether the freeing ports are fitted with shutters, bars, or rails, and give particulars of such:—

Additional area where sheer is less than standard.



© 2020

Lloyd's Register Foundation

PARTICULARS OF PROTECTION TO OPENINGS, ETC.

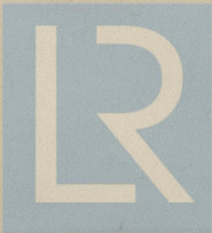
| HATCHWAYS ON FREEBOARD AND SUPERSTRUCTURE DECKS. | | | | | | | | | | |
|--|----------------------|---|--------------------|--------------------|-----|--------------|-----|-------------|-----|--|
| Description of Hatchway | | No 1 | | No 2 | | No 3 | | No 4 | | |
| Dimensions of Hatchway | | 31'6" x 20' | | 31' x 20' | | 12'11" x 20' | | 10'4" x 20' | | |
| COAMINGS | Height above Deck | 30 | | 30 | | 30 | | 30 | | |
| | Thickness | Sides | .50 | | .50 | | .50 | | .50 | |
| | | Ends | .44 | | .44 | | .44 | | .44 | |
| | Stiffeners | 2 1/2" DIA | 12 x 3 1/2 x 50 BA | | 3 | | 1 | | 1 | |
| HATCH BEAMS | Number | 18 1/2 x 36 | | 5-5" | | 4-6 1/4 | | 6-5 1/2 | | |
| | Spacing | 17 3/4 x 35 | | 14 1/2 x 34 | | 17 3/4 x 35 | | | | |
| | Scantling and Sketch | 5 x 3 x 3/8 DOUBLE ANGLES TOP & BOTTOM. | | | | | | | | |
| | Bearing Surface | 3 | | 3 | | 3 | | 3 | | |
| FORE AND AFTERS | Number | 12 x 3 1/2 x 50 BA | | 10 x 3 1/2 x 44 BA | | | | | | |
| | Spacing | | | | | | | | | |
| | Unsupported Lengths | | | | | | | | | |
| | Scantling and Sketch | | | | | | | | | |
| HATCH COVERS | Material | W.P. | | W.P. | | W.P. | | W.P. | | |
| | Thickness | 2 1/2 | | 2 1/2 | | 2 1/2 | | 3 | | |
| | How fitted | F & A | | F & A | | F & A | | F & A | | |
| | Bearing Surface | 3 | | 3 | | 3 | | 3 | | |
| Spacing of Cleats | | 24 | | 24 | | 24 | | 24 | | |
| Number of Tarpaulins | | 2 | | 2 | | 2 | | 2 | | |
| <p>*Are wood fore and afters steel shod at all bearing surfaces? <input checked="" type="checkbox"/> YES</p> <p>Are battens and wedges efficient and in good condition? <input checked="" type="checkbox"/> YES</p> <p>Are tarpaulins in good condition and in accordance with rule requirements? <input checked="" type="checkbox"/> YES</p> <p>Are lashings provided in accordance with rule requirements? <input checked="" type="checkbox"/> YES</p> | | | | | | | | | | |

Particulars of any special features:— The scantlings are suitable for a draft 18" in excess of that corresponding to the freeboard which could be assigned to a vessel with a tonnage opening.

The openings in the tween deck bulkheads are closed by rivetted plates or by hinged W.T. doors.

Endorsement at first survey and at surveys for renewal of Certificate:—

The fittings and appliances are in accordance with the particulars shown on this form (or as now modified) and are in good condition.



© 2020

Lloyd's Register Foundation