

13.9.45

FOR HATCHES, PILLARS &  
GIRDERS. SEE PLAN.  
APPROVED 25/10/45.

Nº 1191

# PROFILE & DECK PLANS.

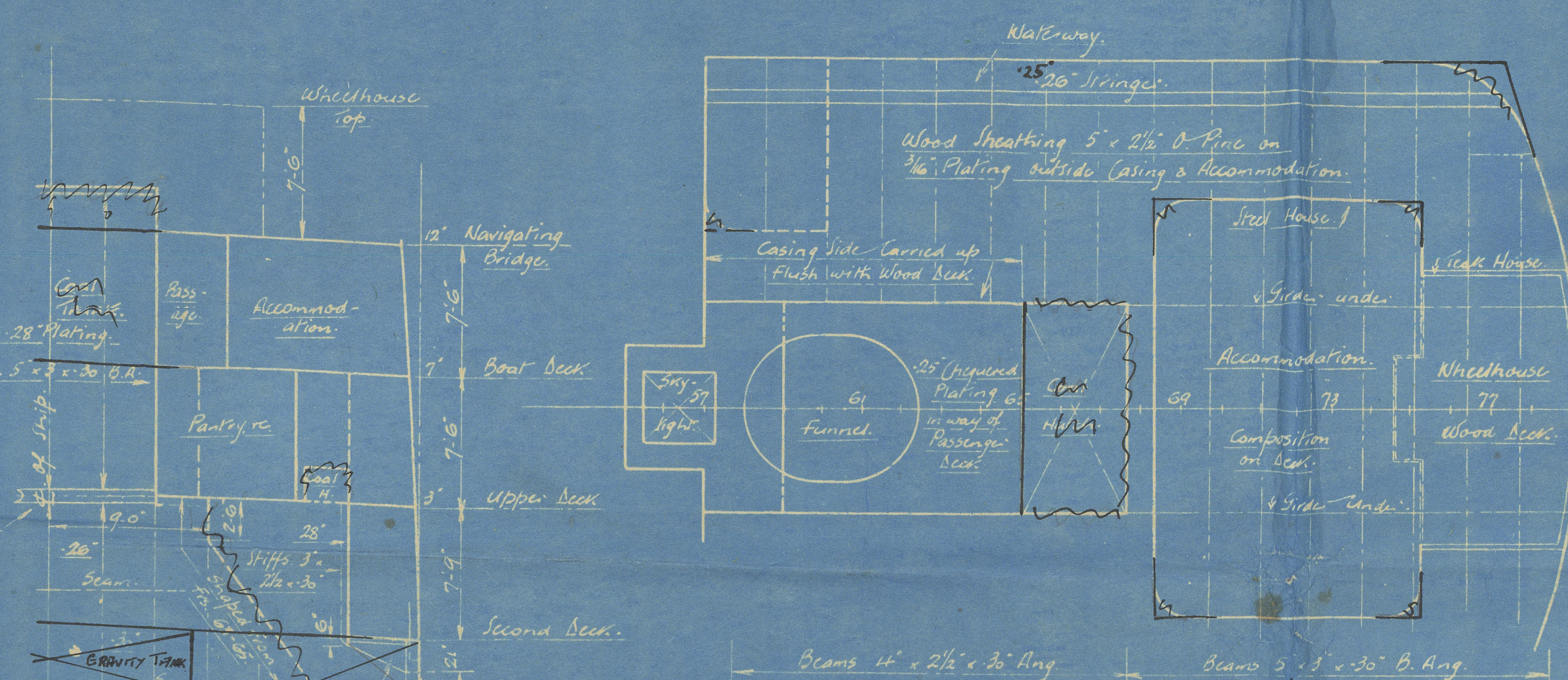
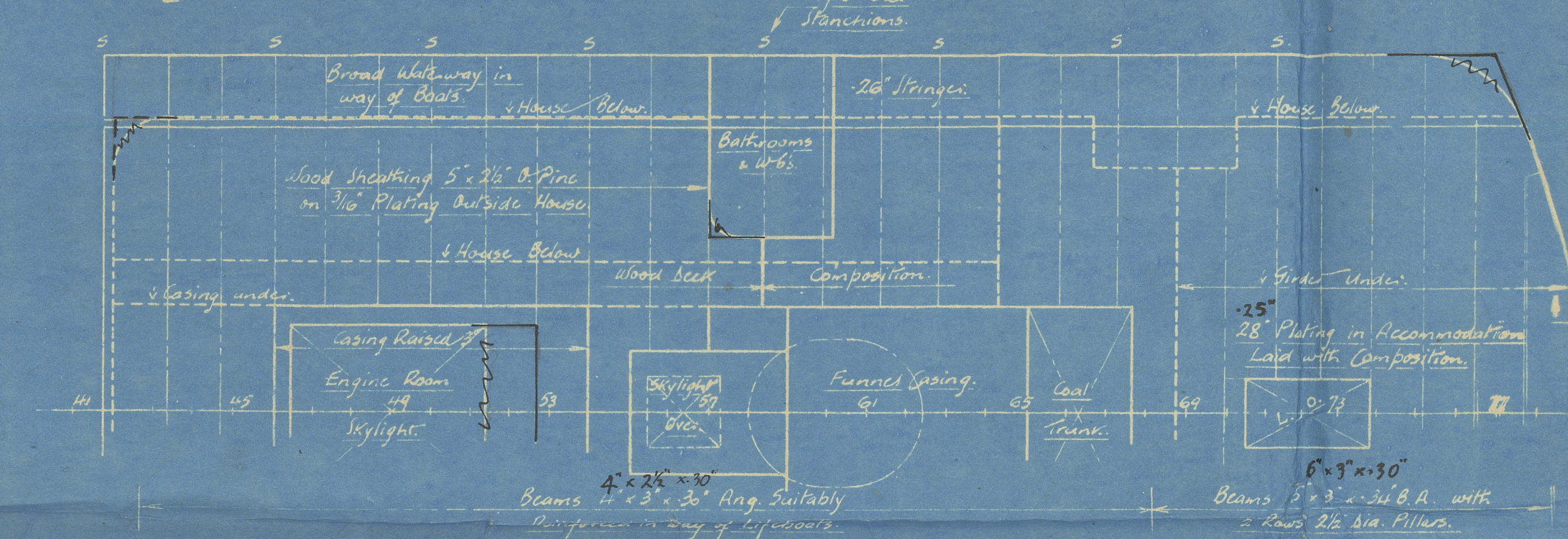
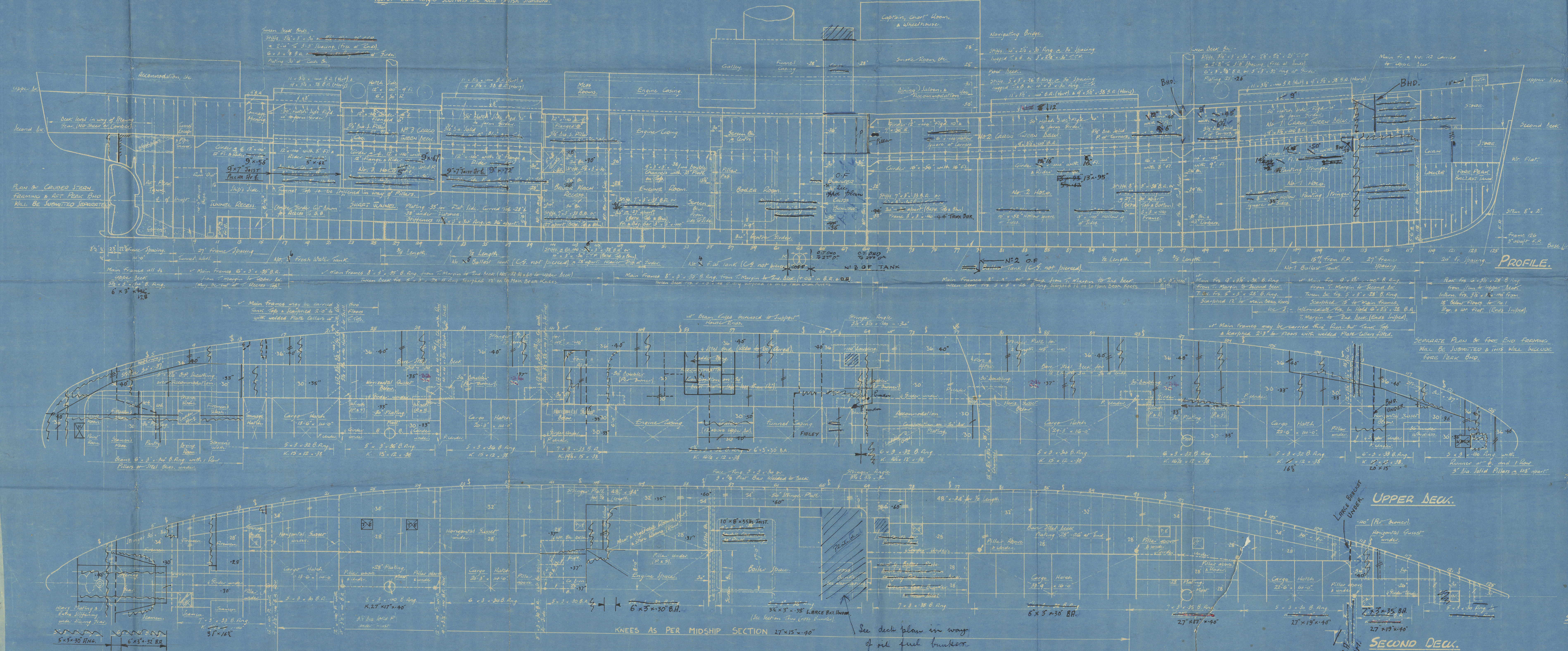
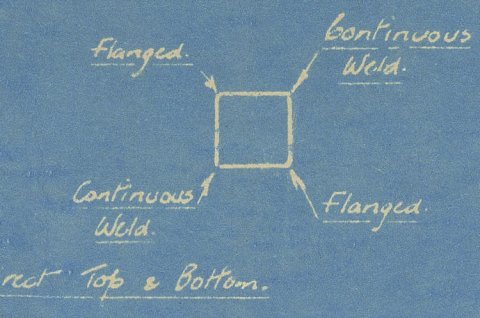
DIMENSIONS:- 280'0" B.P. x 42'0" B.M. x 17'6"/25'3" B.M.

TO CLASS LLOYDS Nº 100 R.I. "WITH FREEBOARD" STRENGTHENED FOR NAVIGATION IN ICE.  
SCANTLINGS SUITABLE FOR A SUMMER DRAFT OF 17'0" EXTREME.  
SCALE 1/8" = 1 FOOT.

Note:- Bulk Angle Sections are New British Standard.

Note:- Windlass, Winches, Mast Houses, etc., to be  
submitted to Surveyors Satisfaction.


Timber & Hollow Square Pillars:-  
Ends welded direct to girders & welded to  
2" x 2" x 30" Angle on lower side.  
Wide spaced Pillars in main beams welded direct top & bottom.





Grays 1191

Profile & decks

S.S. "MALIMO"  W. H. PL R/P. N: 18781.

2



© 2020

Lloyd's Register  
Foundation

005089 - 005097 - 0054