

RUDDER & SCREW FRAME.

SCALE 1/2" = 1 FOOT.

RUDDER FRAME OF FORGED STEEL

STERN FRAME OF FORGED IRON

POOP DECK

TO PASS LLOYD'S.

HOLE FOR PINTLES TO BE CENTRED 6 1/4" FROM AFT SIDE OF STERN POST HEAD & HOLES FOR HEEL & PINTLES TO BE TURNED IN A LATHE, SO AS TO GET THEM QUITE TRULY CENTRED. CHECK THE HEIGHTS OF GUDGEONS ON RUDDER FRAME FROM THE HEIGHTS OF GUDGEONS ON SCREW FRAME AND MAKE THEM CORRESPOND.

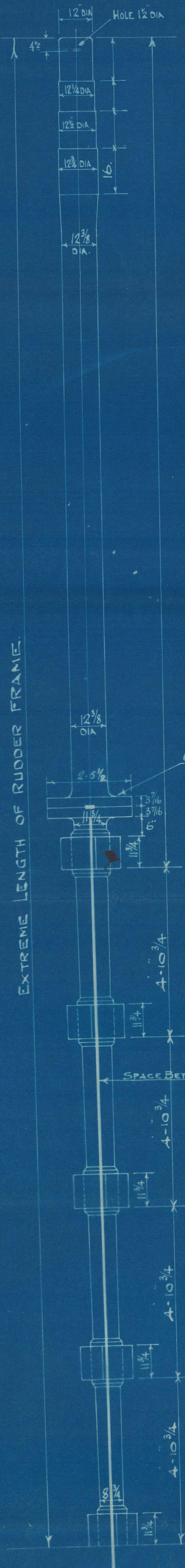
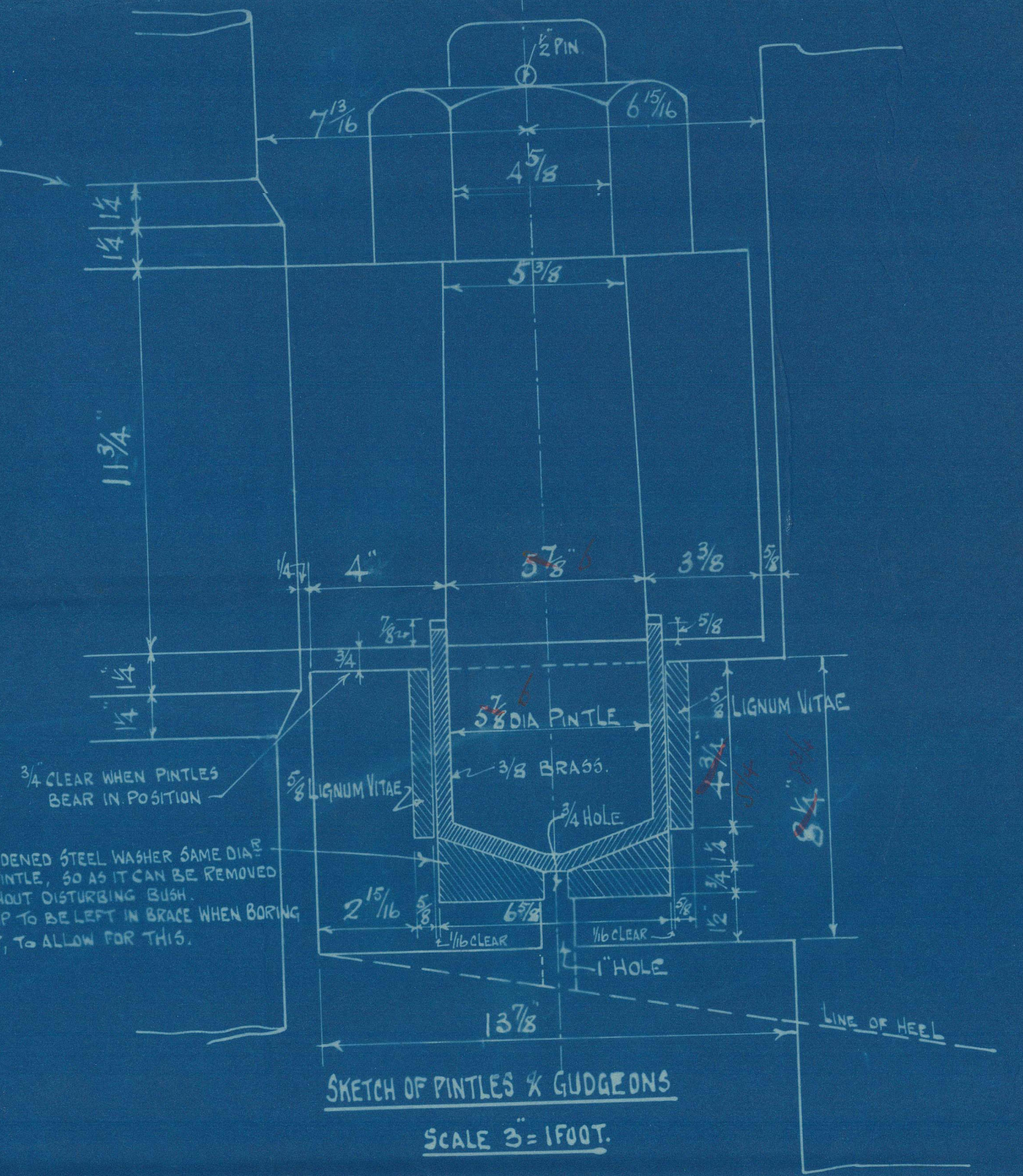
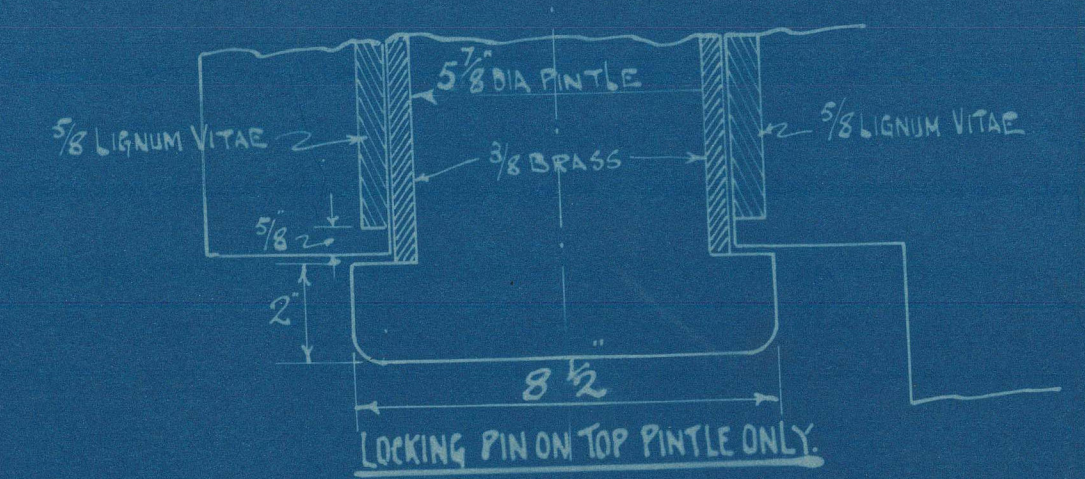
NOTE:- RUDDER STOCK IS ABOVE LLOYD'S REQUIREMENTS

LLOYD'S LENGTH 453 x 345 = 156285, 15' LONG NUMBER. SPEED 12 1/2 KNOTS. AREA OF RUDDER = 155.0 sq. CENTRE OF GRAVITY = 4.40 FT. A.D. = 695.2.

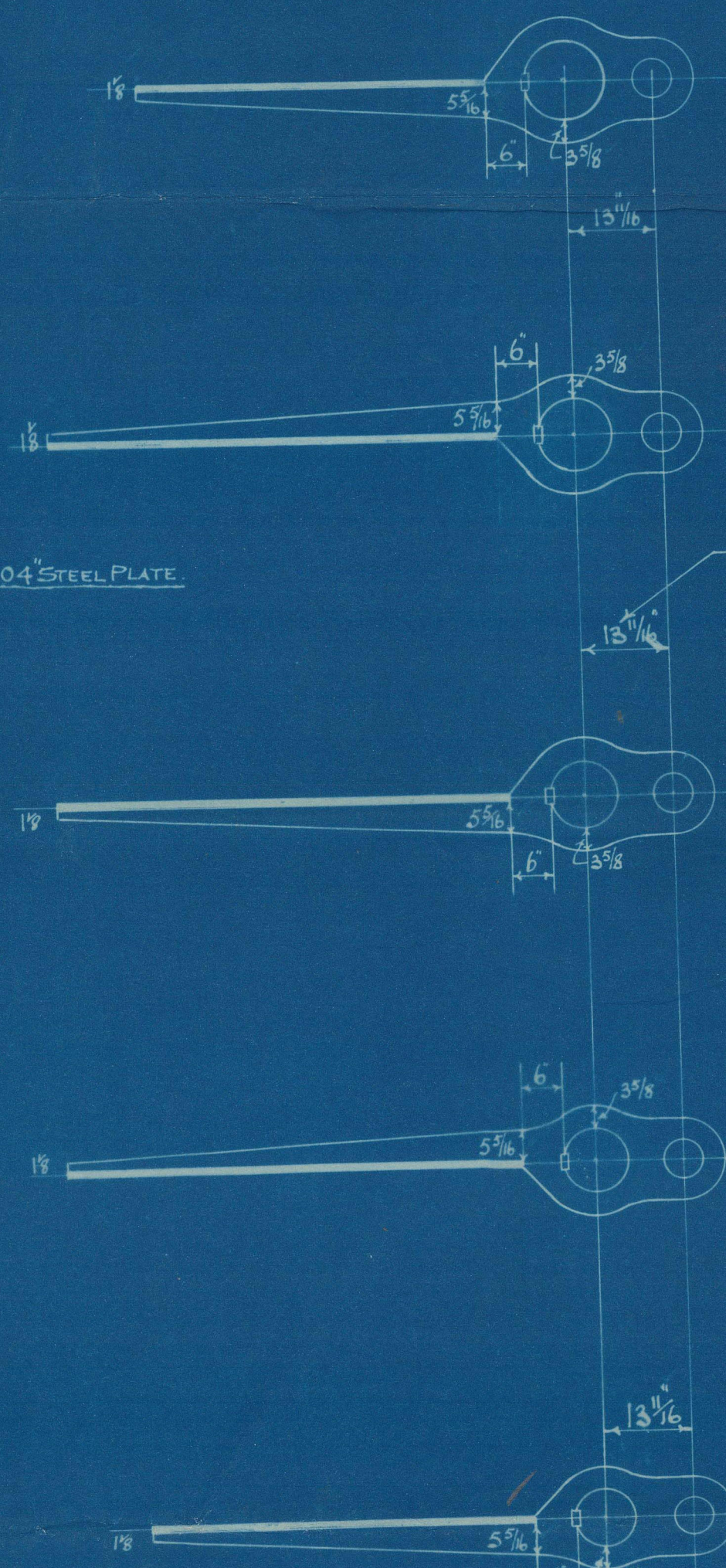
STEERING GEAR

UPPER DECK

NOTE:- RUDDER POST TO BE 14 MORE IN DIA. AT EACH ARM FOR 1/4" DEEP FROM 1/2" ABOVE TOP OF KEYWAY FOR KEYWAY EXCEPT BOTTOM ARM WHICH 1 1/2" DEEP. NO SLOT IN BACK OF POST FOR RUDDER PLATE.



BOOTS 3/8" DIA IN COUPLING SEE LARGE DETAIL SKETCH.



NOTE:- CENTRE LINE OF RUDDER POST TO BE PARALLEL TO CENTRE LINE OF PINTLES

STEEL PLATE 1-04 THICK 1/4" HOLES 5/8" APART CENTRES

1/4" CLEAR 2" FROM BOTTOM OF POST

1/4" CLEAR 2" FROM BOTTOM OF POST

1/4" CLEAR 2" FROM BOTTOM OF POST

1/4" CLEAR 2" FROM BOTTOM OF POST

1/4" CLEAR 2" FROM BOTTOM OF POST

1/4" CLEAR 2" FROM BOTTOM OF POST

1/4" CLEAR 2" FROM BOTTOM OF POST

1/4" CLEAR 2" FROM BOTTOM OF POST

1/4" CLEAR 2" FROM BOTTOM OF POST

1/4" CLEAR 2" FROM BOTTOM OF POST

1/4" CLEAR 2" FROM BOTTOM OF POST

1/4" CLEAR 2" FROM BOTTOM OF POST

1/4" CLEAR 2" FROM BOTTOM OF POST

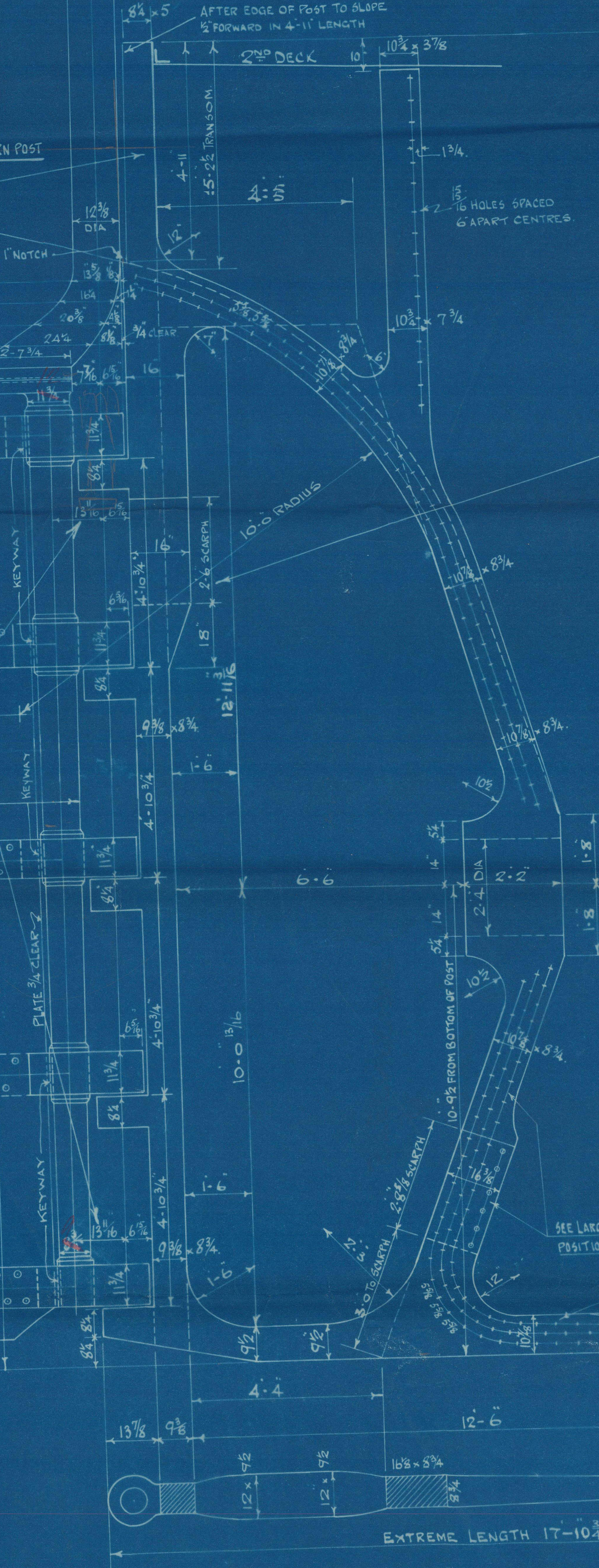
1/4" CLEAR 2" FROM BOTTOM OF POST

1/4" CLEAR 2" FROM BOTTOM OF POST

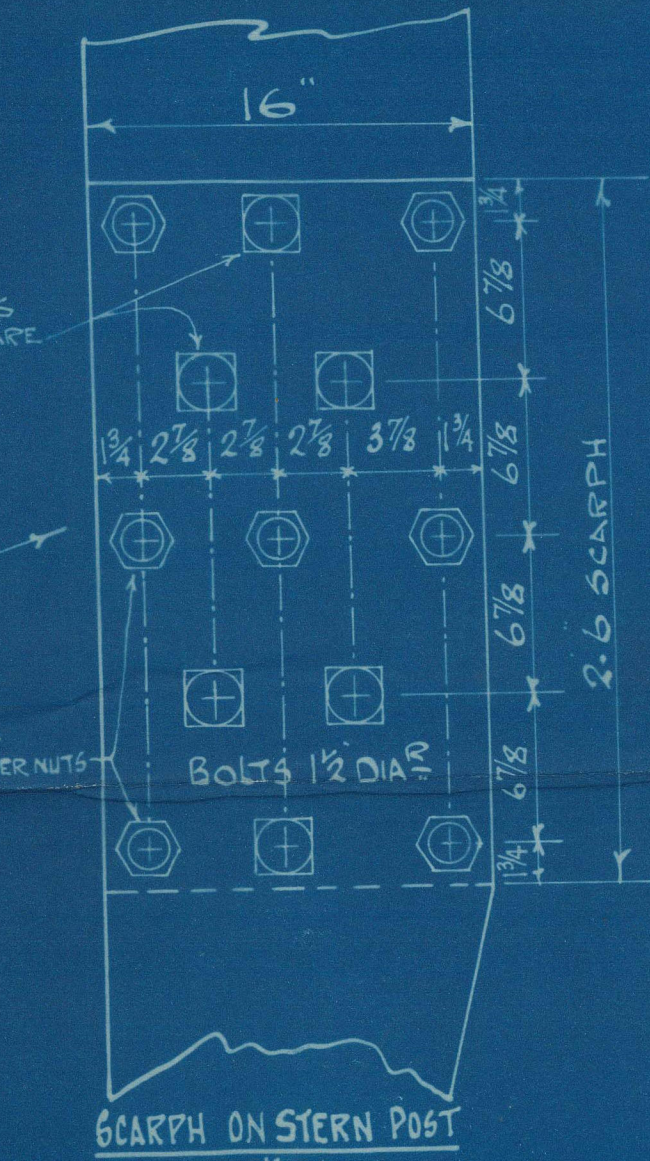
1/4" CLEAR 2" FROM BOTTOM OF POST

1/4" CLEAR 2" FROM BOTTOM OF POST

1/4" CLEAR 2" FROM BOTTOM OF POST



EXTREME HEIGHT OF SCREW FRAME FROM BOTTOM OF POST 30.5



SKETCH ON STERN POST SCALE 1/2" = 1 FOOT.

NOTE:- BOLTS FITTED ALTERNATELY FROM PORT & STARBOARD SIDES.

FINISHED SIZE OF BORE GIVEN BUT BOSS TO BE ROUGH BORED PARALLEL AT FORCE TO 2-3/8" BORE

DECLINITY OF SHAFT 1/68 PER FOOT

DECLINITY OF SHAFT 1/68 PER FOOT

DECLINITY OF SHAFT 1/68 PER FOOT

DECLINITY OF SHAFT 1/68 PER FOOT

DECLINITY OF SHAFT 1/68 PER FOOT

DECLINITY OF SHAFT 1/68 PER FOOT

DECLINITY OF SHAFT 1/68 PER FOOT

DECLINITY OF SHAFT 1/68 PER FOOT

DECLINITY OF SHAFT 1/68 PER FOOT

DECLINITY OF SHAFT 1/68 PER FOOT

DECLINITY OF SHAFT 1/68 PER FOOT

DECLINITY OF SHAFT 1/68 PER FOOT

DECLINITY OF SHAFT 1/68 PER FOOT

DECLINITY OF SHAFT 1/68 PER FOOT

DECLINITY OF SHAFT 1/68 PER FOOT

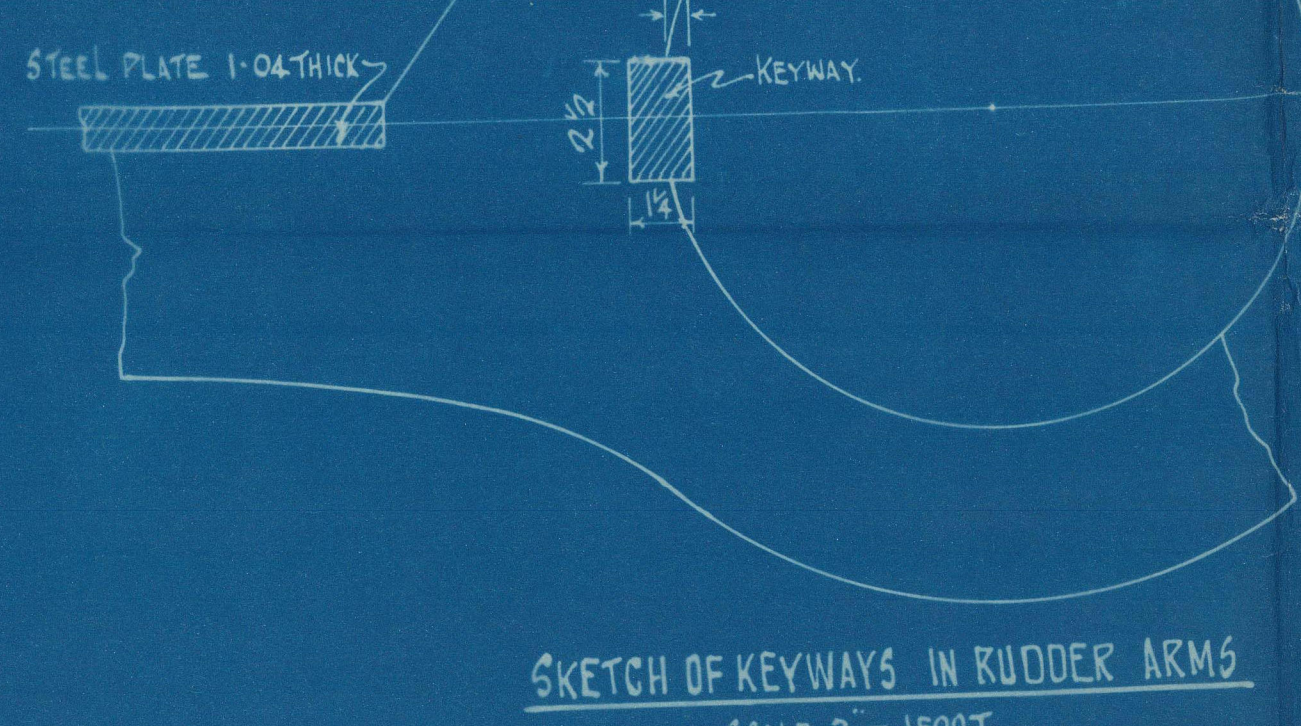
DECLINITY OF SHAFT 1/68 PER FOOT

DECLINITY OF SHAFT 1/68 PER FOOT

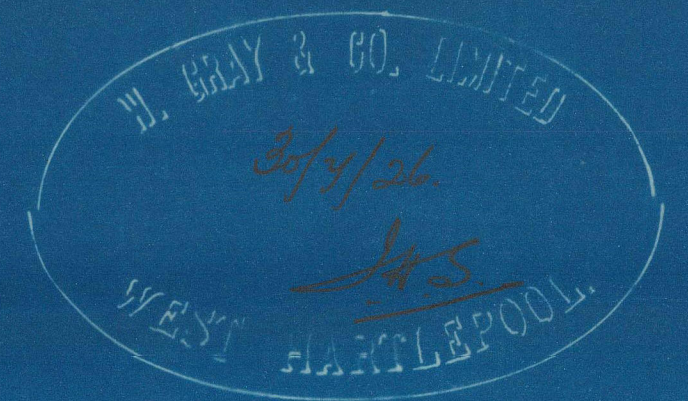
DECLINITY OF SHAFT 1/68 PER FOOT

DECLINITY OF SHAFT 1/68 PER FOOT

DECLINITY OF SHAFT 1/68 PER FOOT



SKETCH OF KEYWAYS IN RUDDER ARMS SCALE 3/4" = 1 FOOT.



PLAN NO 15
DRAWN BY
CHECKED BY

985

985



985

GRAY'S 985

RUDDER

&

STERNFRAME

S/S 'City of Canberra'

West. Hpool Report

No 16585



© 2021

Lloyd's Register
Foundation