

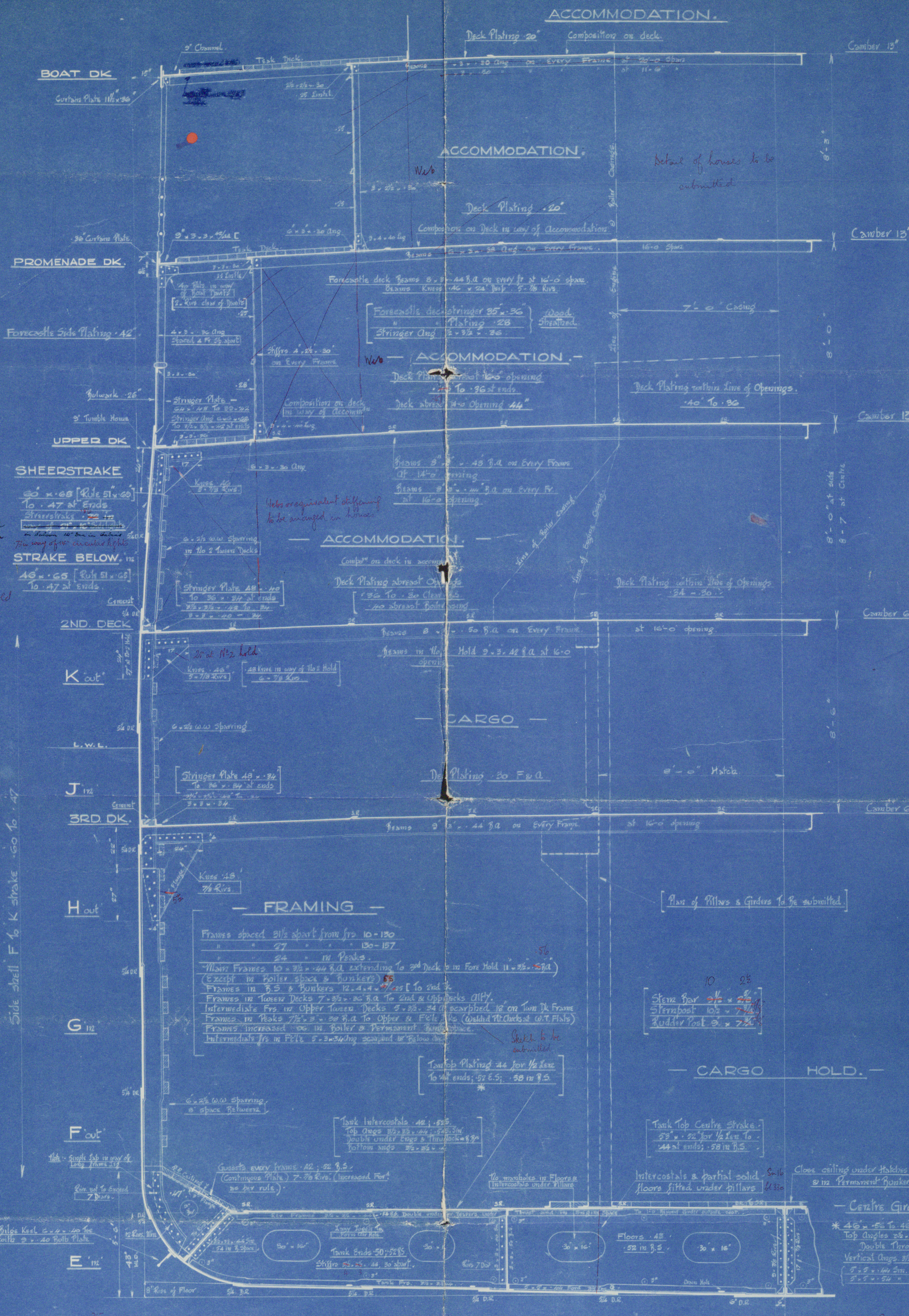
Nº 975.

# MIDSHIP SECTION.

SCALE 1/2" = ONE FT.

DIMENS: 420'-0" B.P. x 56'-0" MLD x 37'-0" MLD TO UPPER DK.

TO CLASS LLOYDS 100A1 WITH FREEBOARD.  
CORRESPONDING TO A MLD. DRAUGHT OF 24'-0"



## NUMERALS.

D	37'-0" (Correction for weight)	= 34.53
L x D	420' x 34.53	= 14502.6
L x (B+D)	420' x (56'-0" + 34.53)	= 38022.34
L/D	420' / 37.0	= 11.35
"d"	37'-0" x 11.35	= 420.05

## EQUIPMENT NUMERAL.

L x (B+D)	= 38022.34
FORECASTLE	76' x 8' x 7' = 456
HOUSES ON UPPER DK.	250' x 8' x 50' = 1,000
" FROM DK.	157' x 8' x 50' = 647
" BOAT DK.	235' x 7' x 50' = 110

40235.

## EQUIPMENT.

- \* 2 Power Anchors each 66 cwt stockless \*
- \* 1 " Anchor 58 1/2 " " " " \*
- \* 1 Stream 19 " " " " " \*
- \* 20 Fms 2 3/4 stud chain cable \*
- \* 30 " 5 " steel wire \*
- \* 120 " 4 1/4 " " " " " \*
- \* 2 2 90 Fms 2 3/4 Flexible steel wire Hawser \*
- \* 2 2 90 " 2 3/4 " " " " " \*

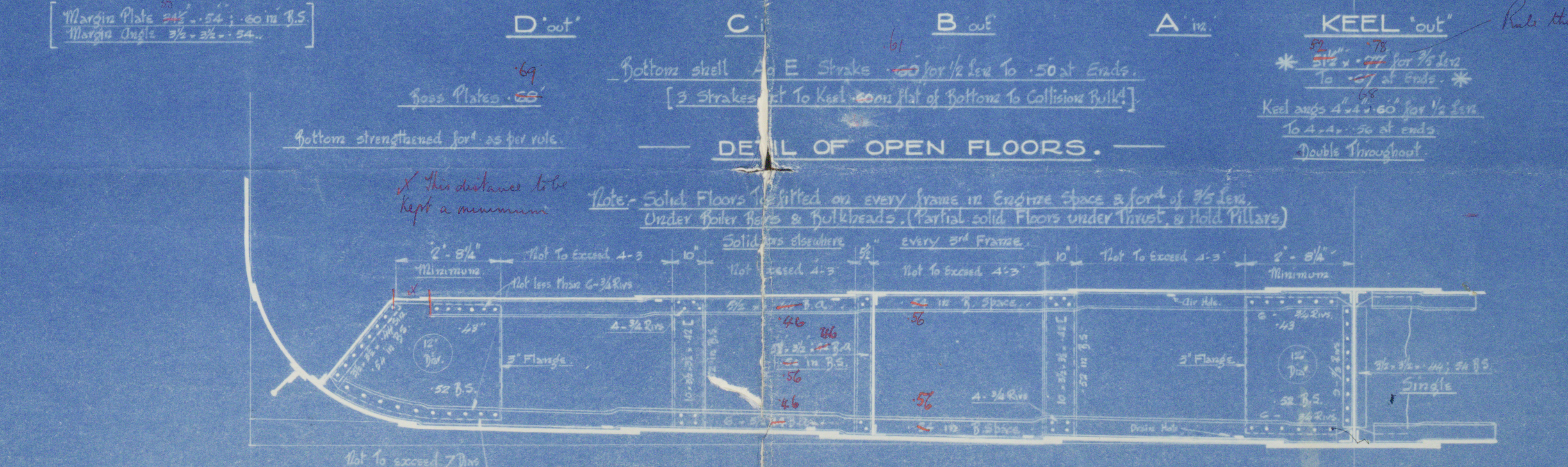
## RIVETING.

- Butts of Flat Plate Keel. Welded overlaps to frame at ends.
- Centre Girder. T.R. Throughout overlapped.
- Tank Top Centre Strake. T.R. for 1/2 in. to D.R. at ends.
- Remainder of Tank Top. D.R. for 1/2 in. to D.R. at ends.
- Winging Plate. T.R. Throughout.
- Upper Deck Sheerstrake. D.R. for 1/2 in. to T.R. at ends.
- Strake Below. D.R. for 1/2 in. to T.R. at ends.
- Forecastle side plating. S.R. Throughout.
- Shell plating (Keel to upper end of side). T.R. Throughout.
- Side shell plating. T.R. Throughout.
- Upper Deck Stringer. T.R. for 1/2 in. to D.R. at ends (Notching).
- Plating. D.R. for 1/2 in. to S.R. at ends.
- 2nd Deck Stringer. D.R. Throughout.
- Plating. D.R. for 1/2 in. to S.R. at ends.
- 3rd Deck Stringer. D.R. Throughout.
- Plating. S.R. Throughout.
- 8-76 S. 10 seams of shell plating and stringers excluding keel in fore.

Note: Increase in scantlings due to increased frame spacing have been embodied on plans.

## \* OWNERS EXTRA SCANTLINGS \*

- Centre Girder to be 2" deeper than Lloyd's requirements (for increased strength).
- Keel Plate to be 10 heavier than Lloyd's on aftermost plate plating quality.
- 2 Power Anchors & cables to be one grade in excess of Lloyd's.
- 1 " Anchor 15 cwt. Ex stock.
- Tank Top under Engines & Thrust 1" Thick.



FRAMING IN BOILER ROOM AND BUNKER.



1. 100



Cammell Laird & Co

No. 975

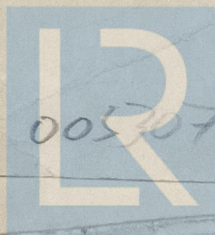
Midship Section

W/S 693

S. S. "HILARY"

LIVERPOOL

Report No. 99050.



© 2021

005207-005210-0024

Lloyd's Register  
Foundation