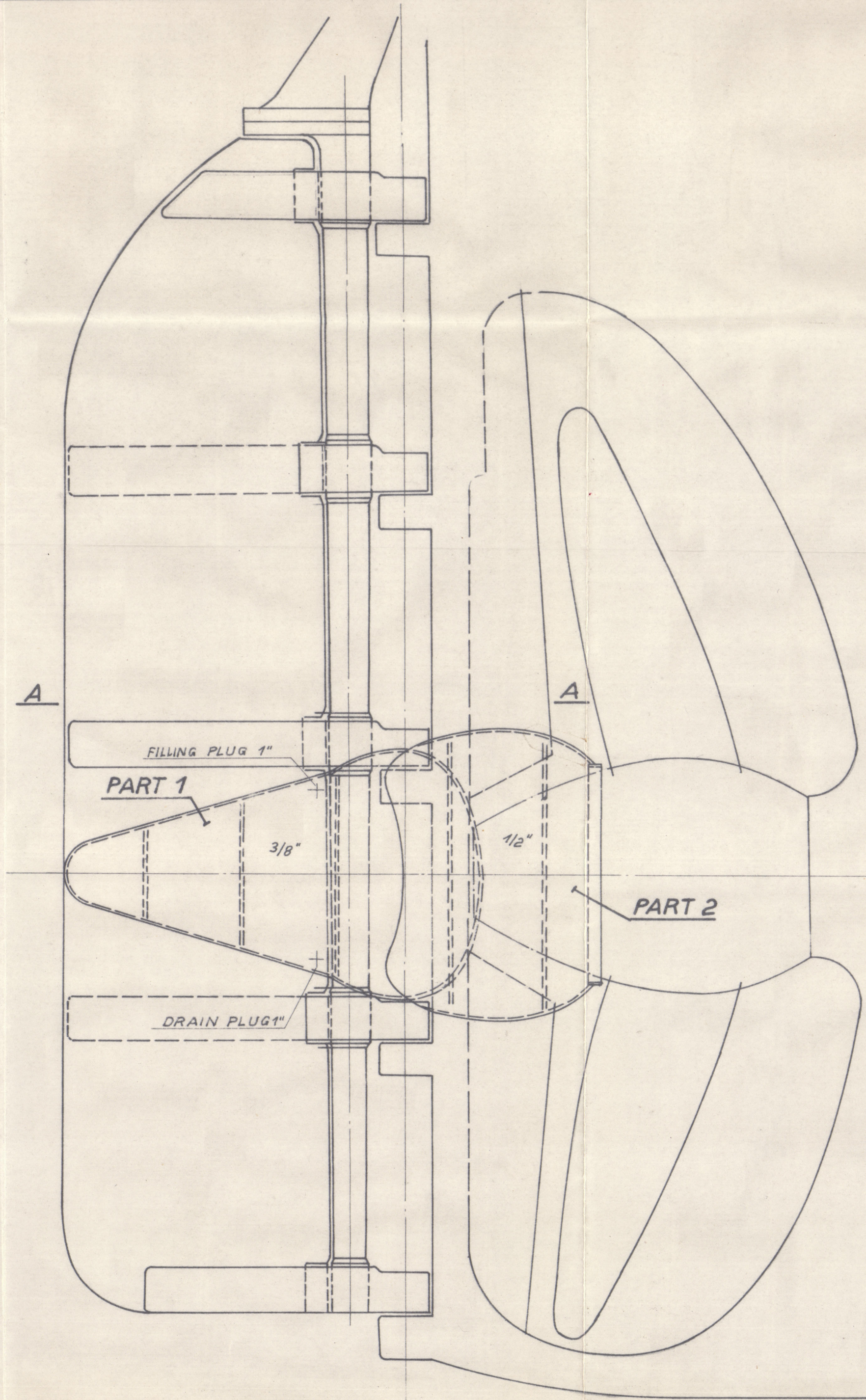
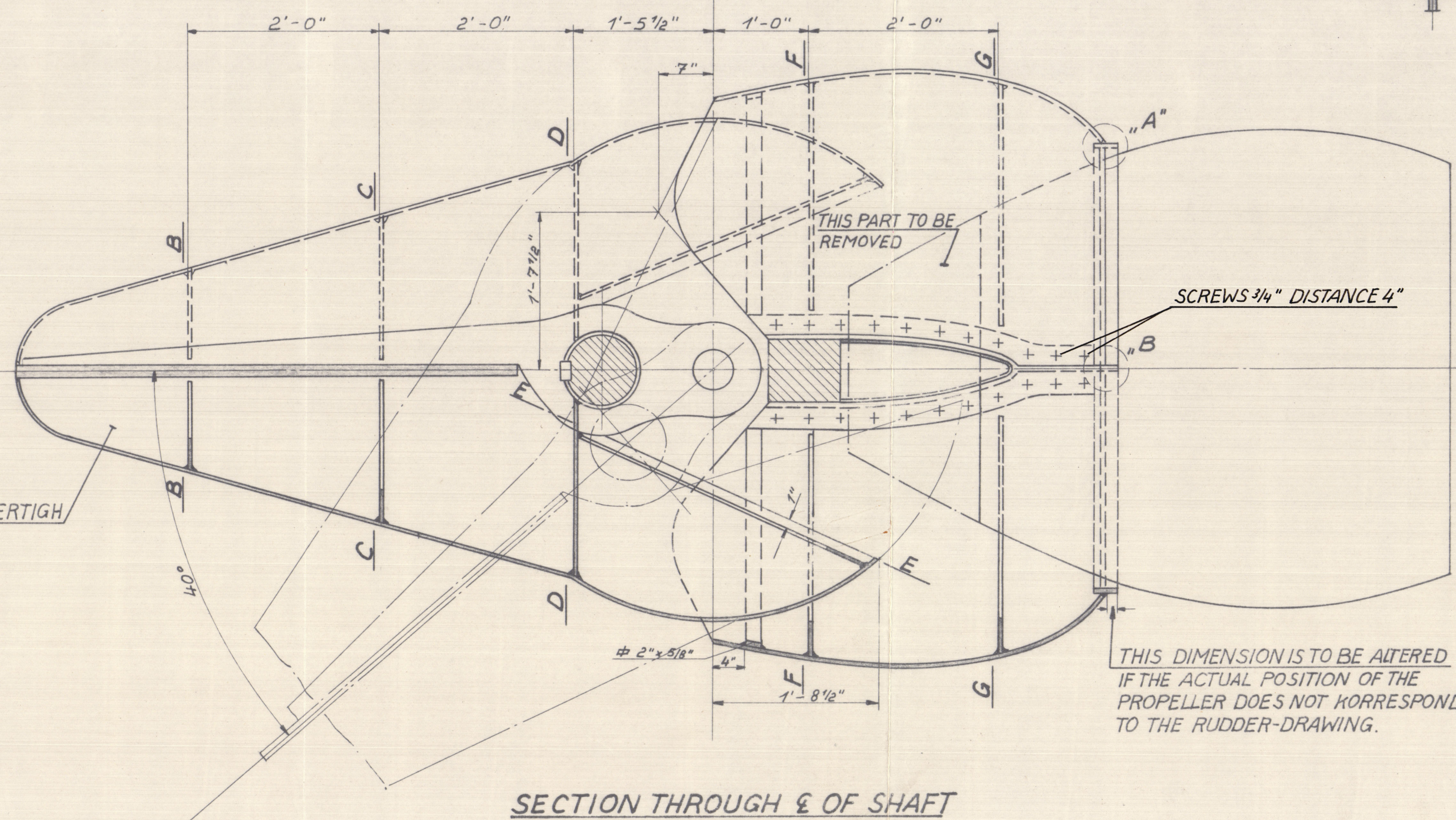


RUDDER SIDE VIEW  
1/2" = 1'



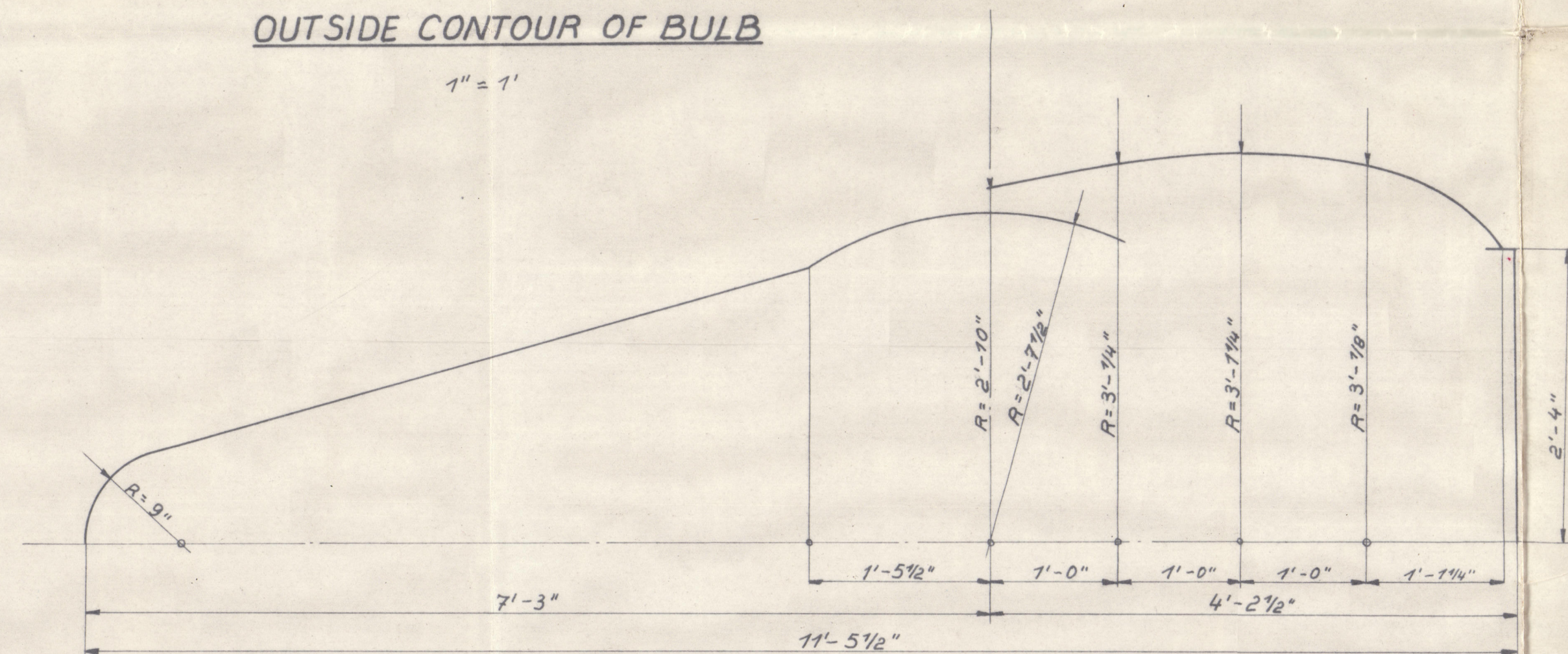
SECTION A-A



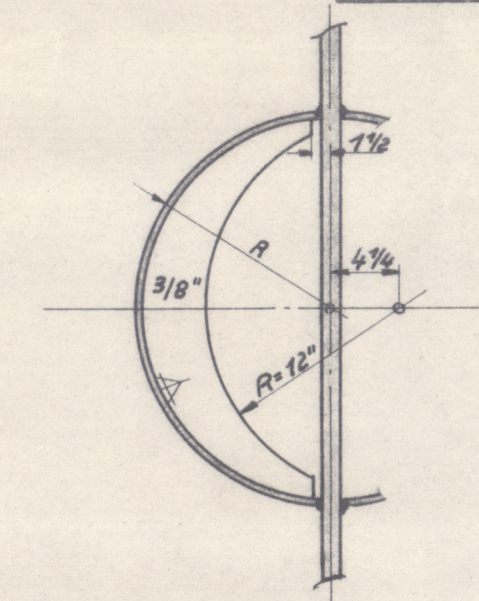
SECTION THROUGH  $\epsilon$  OF SHAFT

OUTSIDE CONTOUR OF BULB

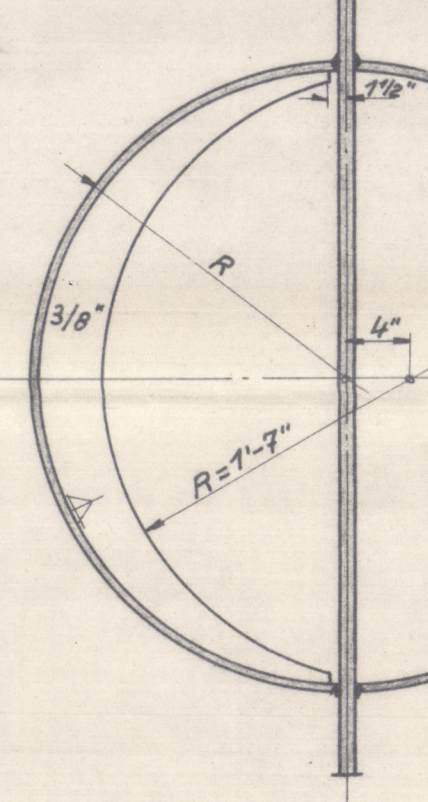
1" = 1'



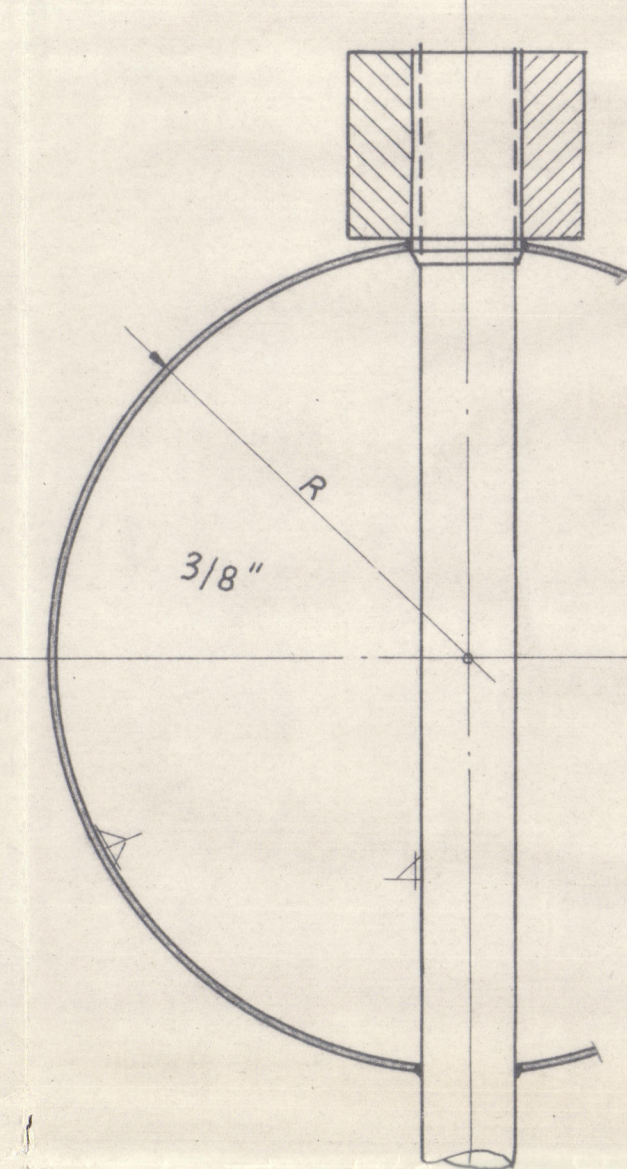
SECTION B-B



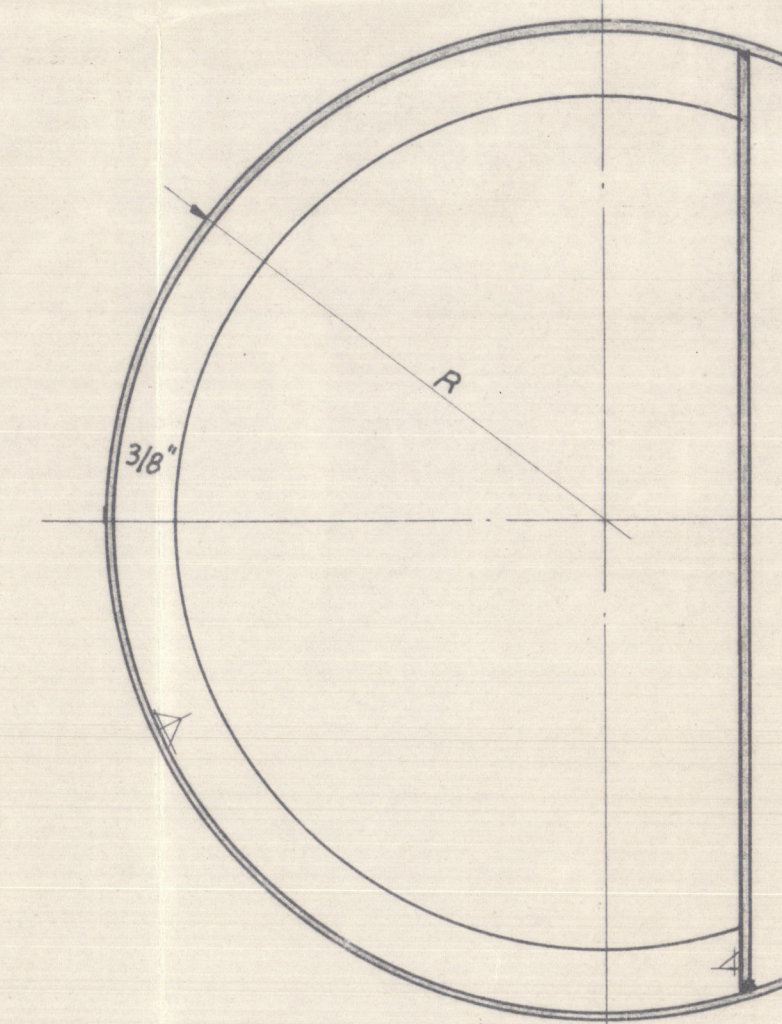
SECTION C-C



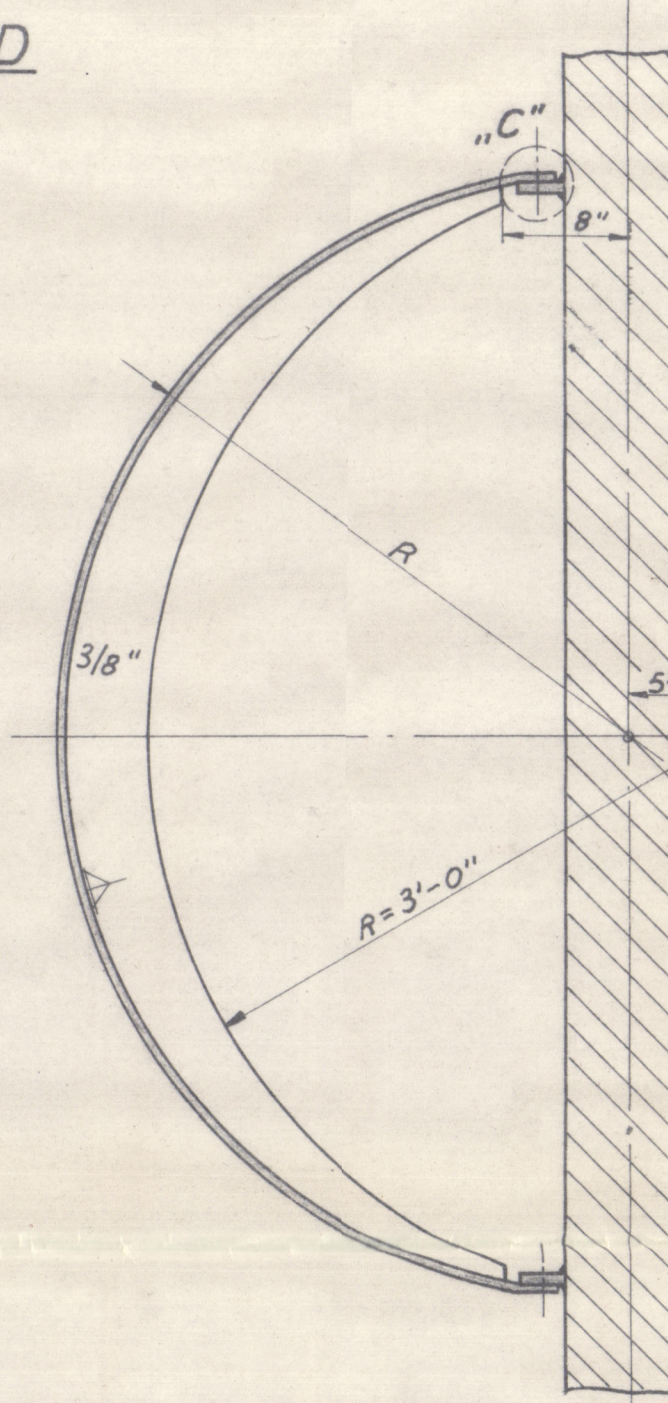
SECTION D-D



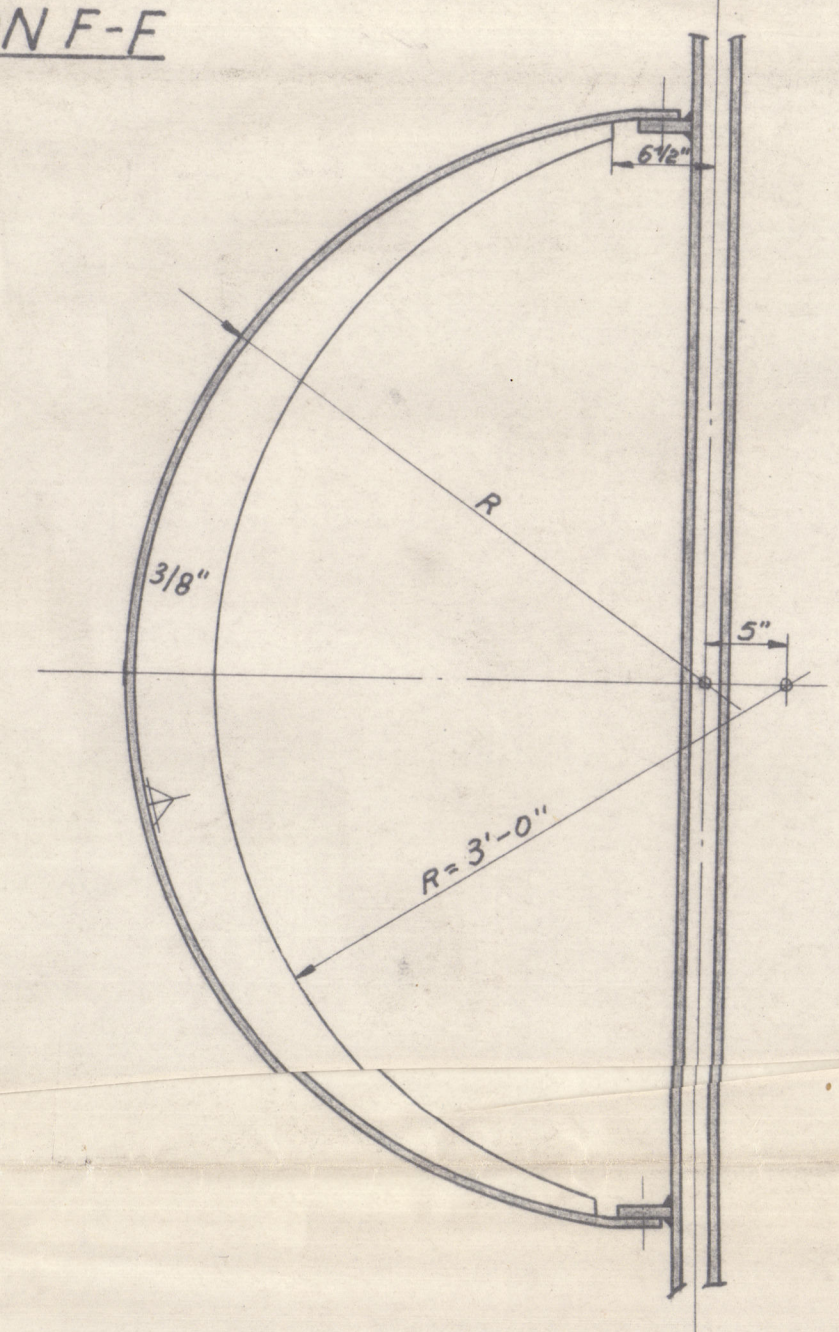
SECTION E-E



SECTION F-F

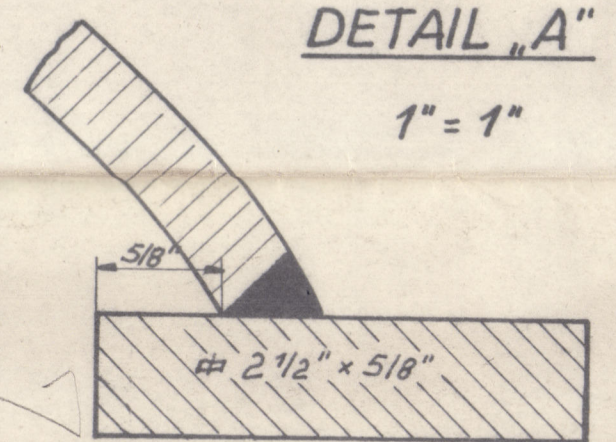


SECTION G-G



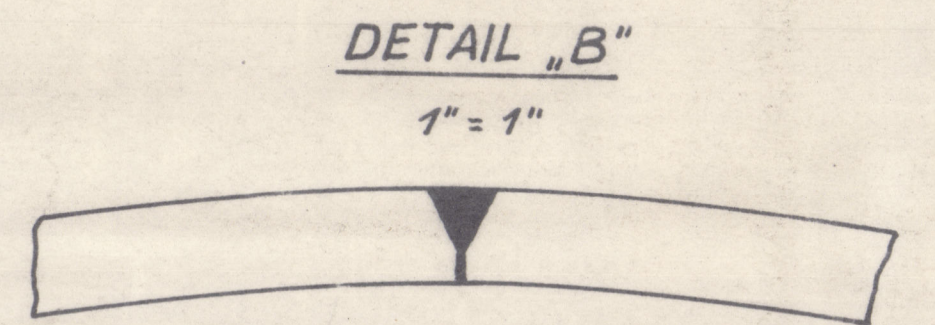
DETAIL "A"

1" = 1"



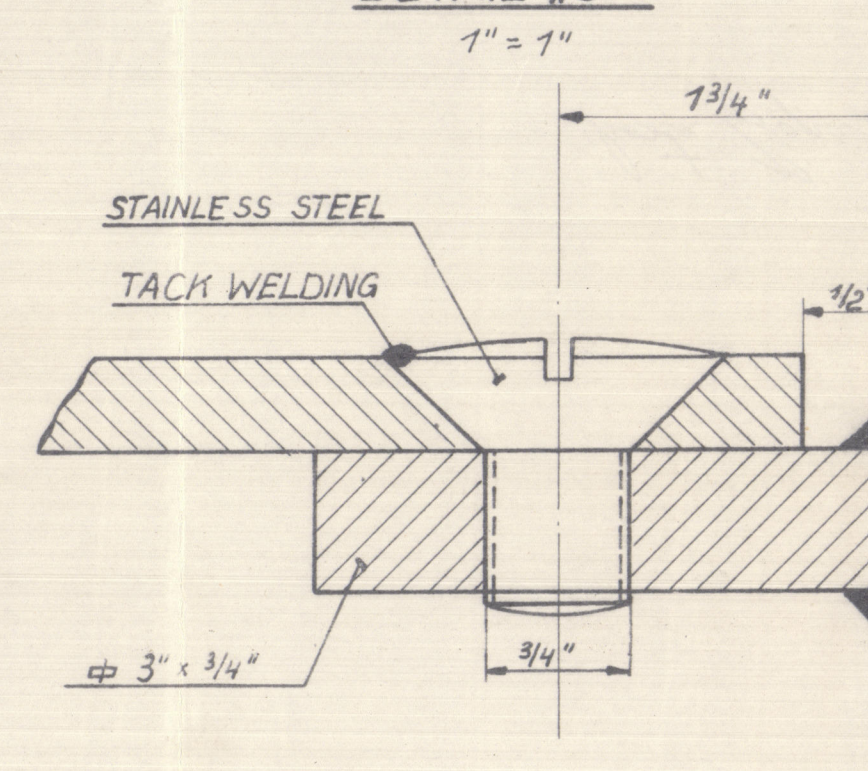
DETAIL "B"

1" = 1"



DETAIL "C"

1" = 1"



NOTES:

THE OUTER SHELL CAN BE MADE IN SLICES ACCORDING TO SHIPYARD FACILITIES AND ASSEMBLED BY MEANS OF ELECTRIC WELDING. THE WELDS TO BE SMOOTHENED BY GRINDING. FILLING AND DRAIN PLUGS TO BE KEPT FLUSH WITH SHELL.

THE BULB IS TO BE PRESSURE-TESTED BY A HEAD OF WATER OF 300 mm (12 inches) ABOVE BULKHEAD-DECK.

FOR CONSERVATION THE INNER PARTS OF THE BULB ARE TO BE COATED WITH MINERAL OIL OR BITUMINOUS SOLUTION AS GENERALLY DONE FOR THE TREATMENT OF DISPLACEMENT RUDDERS.

THE INSIDE OF THE NON WATERTIGHT PARTS IS TO BE PROTECTED BY A SUFFICIENT LAYER OF ANTIRUST-PAINTING.

PARTS OF THE BULB TO BE ASSEMBLED IN SHOP AS MUCH AS POSSIBLE. ERECTION ON SHIP IN THE SAME SEQUENCE AS NUMBERS OF PARTS.

Designs and constructions on this drawing as well as details thereon are the property of MAIERFORM S.A. and are not to be used neither wholly nor partially for any design, construction or building of ships without royalty agreement - nor are they to be shown or given to any third person without our consent. All constructions and details thereon are protected by patents in all countries of the world. Copyright reserved.

MAIERFORM

	MAIERFORM S.A. GENÈVE		designed by 21/2.56	drawn by 21/2.56
	COSTA PROPULSION BULB FOR S.S. "HILARY"		Weight: 7420 kg (3160 LBS)	Lloyd's Register GB 552/2
1/2" = 1'			005707-005310-0027	



*Costa Propulsion Bulb*

*"Hilary"*



© 2021

Lloyd's Register  
Foundation

005307-005310-0027