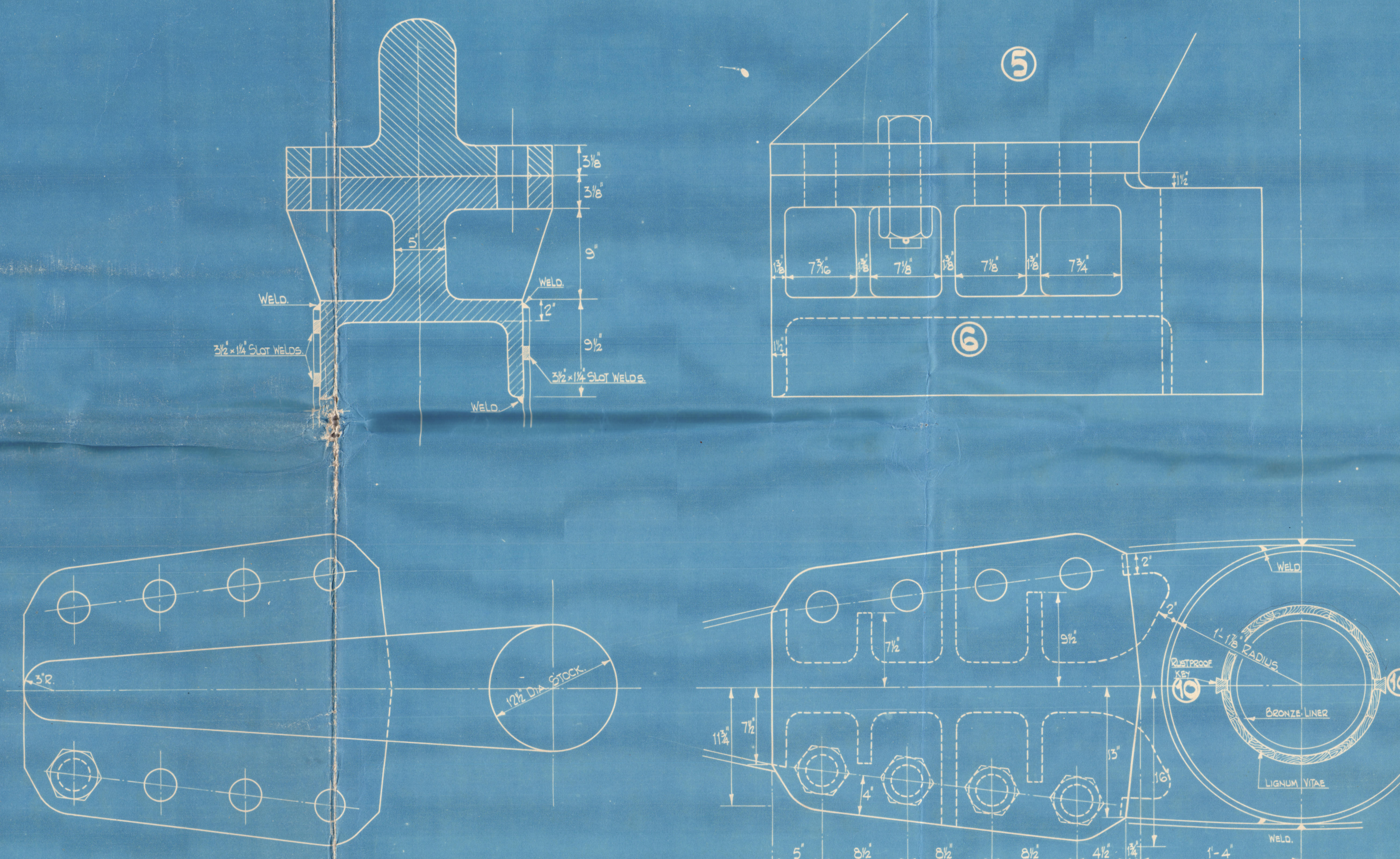


# DETAILS OF RUDDER COUPLING.



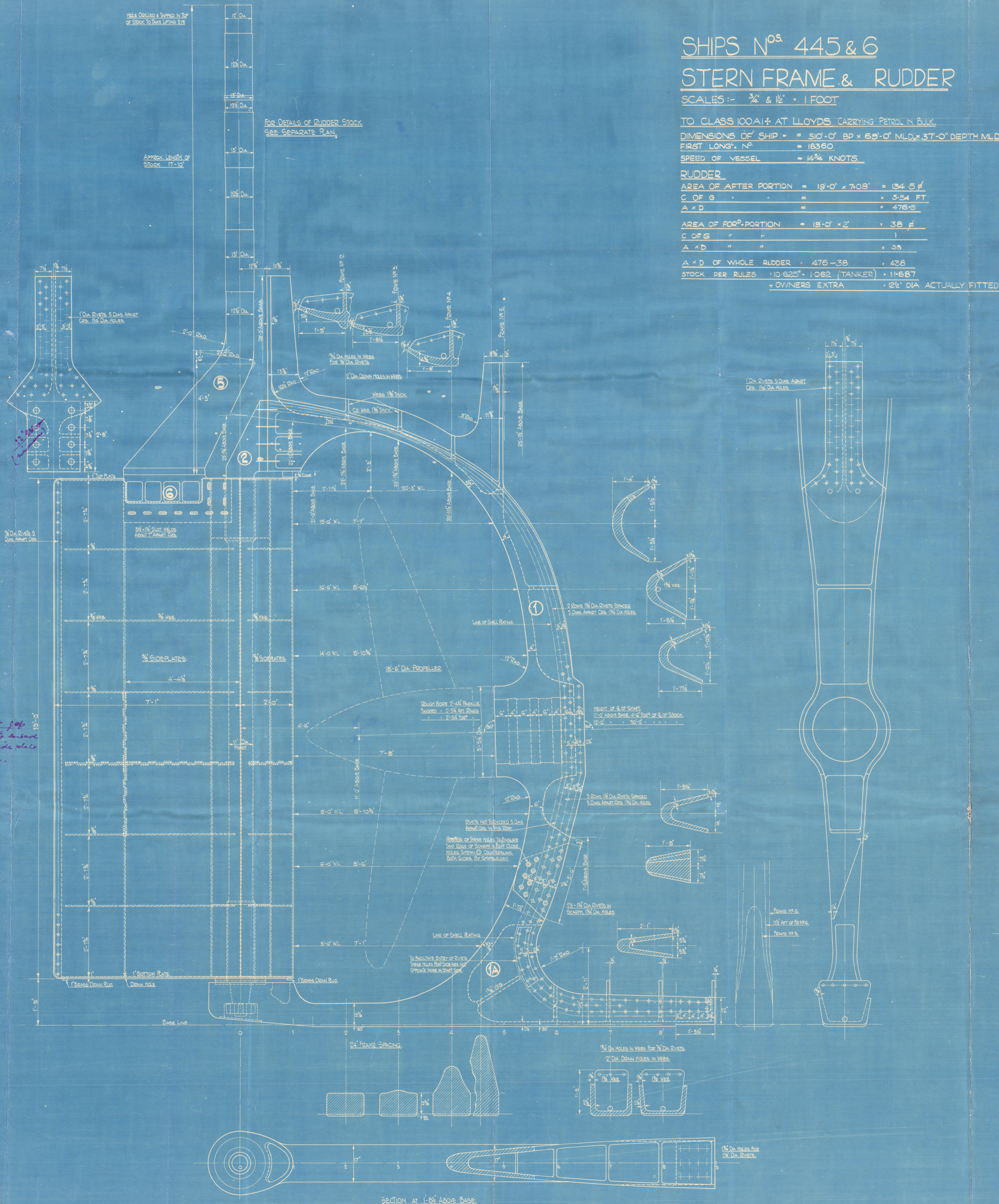
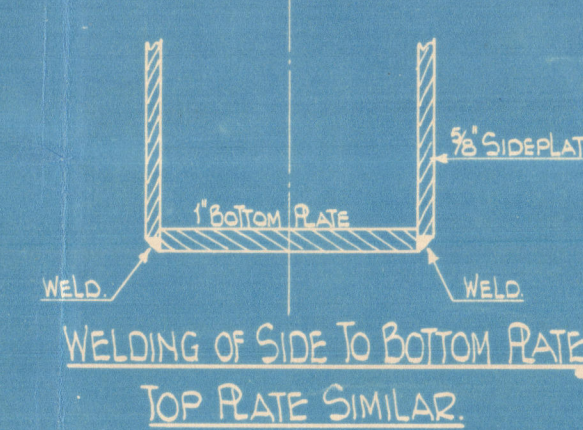
## NOTES.

STERN FRAME & RUDDER.  
TO CLASS 100A11 AT LLOYD'S CARRYING PETROL IN BULK.  
SURVEYOR'S BEFORE LEAVING MAKERS WORKS.  
ALL MACHINING & DRILLING TO BE DONE BY MAKERS.  
HORIZONTAL TO BE WORKED TO CAREFULLY AS THE ONLY  
ON VERTICAL CALCULATED TO THESE SIZES. VERTICAL  
DIMENSIONS ONLY TO BE TAKEN.  
MAKERS TO NOTIFY SHIPBUILDERS OF ANY PROPOSED  
DEPARTURE FROM THIS DRAWING & HAVE TO BE  
APPROVED BEFORE PROCEEDING.  
EXPPOSED EDGES OF CASTINGS TO BE ROUNDED OFF  
PATTERNS TO BE SUPPLIED BY MAKERS.  
GREAT CARE TO BE TAKEN TO ENSURE THAT WHEN ALL  
ASSEMBLED THE LENGTHS OF RUDDER STOCK  
& STERN FRAME POST ARE IN LINE & SQUARE TO  
THE BASELINE & THAT STERN FRAME POST IS A  
PERFECT FIT AT TOP & BOTTOM WITH STERNFRAME  
SCAPES & SHITTED.  
STERN FRAME  
MATERIAL - BEST QUALITY CAST STEEL WITH ALL SURFACES SMOOTH  
FINISHED.  
SCAPES TO BE MACHINED & TO BE A GOOD FIT  
APERTURE OFFSETS & FULL SIZE SECTION WILL BE SUPPLIED  
BY MAKERS.  
STERN FRAME - NOT TO BE PAINTED BUT MAY BE GIVEN A COAT OF OIL  
PAINT.  
DRAWINGS SHOWN IN LIST OF PARTS  
COUPLING TO BE MACHINED & TO BE A GOOD FIT  
STOCK TO BE MACHINED FOR STEERING GEAR & BEARINGS & POINT  
GAUGES SUPPLIED TO SHIPBUILDERS.

## LIST OF PARTS SUPPLIED BY MAKERS.

ITEM NO.	DESCRIPTION	MATERIAL
1A	1 STERN FRAME IN TWO PIECES	CAST STEEL
2	1 BACK POST WITH 12 IN. CAST STEEL	CAST STEEL
3	2 COUPLING BOLTS	STEEL
4	2 COUPLING BOLTS	STEEL
5	1 RUDDER STOCK	CAST OR FORGED STEEL
6	1 COUPLING PIECE	CAST STEEL
7	8 BOLTS	STEEL
8A	2 BEARINGS (UPPER & LOWER)	STEEL
8B	2 BUSHES	LIGNUM VITAE
9	4 KEYS	RUSTPROOF STEEL
10	1 UPPER BEARING RING	MILD STEEL
11	1 LOWER	MILD STEEL

## RUDDER OFFSETS.



## SHIPS N<sup>OS</sup> 445 & 6

## STERN FRAME & RUDDER

SCALES :- 3/4" & 1/2" = 1 FOOT

TO CLASS 100A11 AT LLOYD'S CARRYING PETROL IN BULK.

DIMENSIONS OF SHIP :- 510'-0" BP x 69'-0" MLD x 37'-0" DEPTH MLD.

FIRST LONG. N<sup>o</sup> = 18360

SPEED OF VESSEL = 14 3/4 KNOTS

## RUDDER

AREA OF AFTER PORTION = 19'-0" x 7'-09" = 134.57

C OF G " " = 3'-34 FT

A x D " " = 47615

AREA OF FORW. PORTION = 19'-0" x 2' = 38

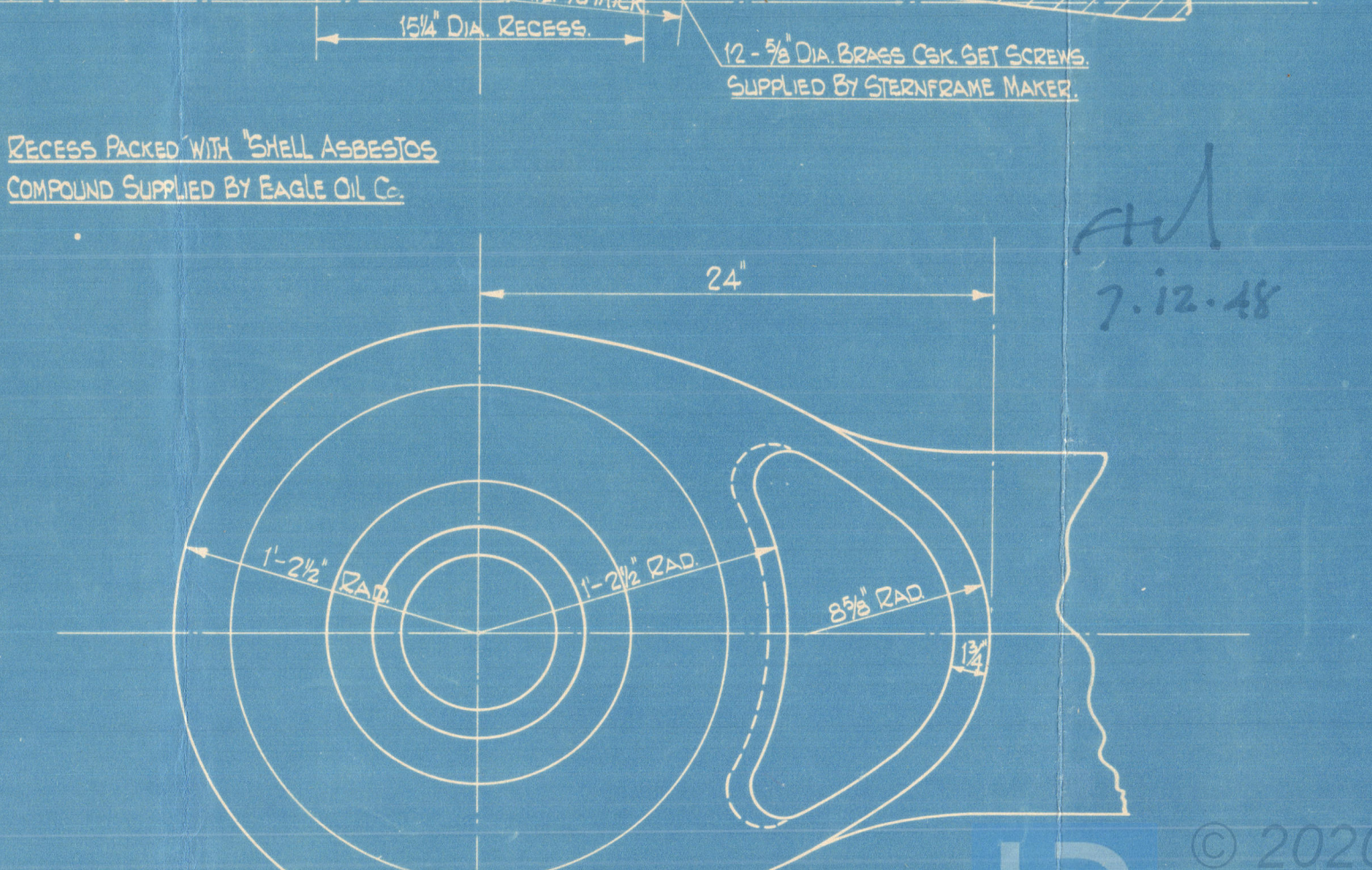
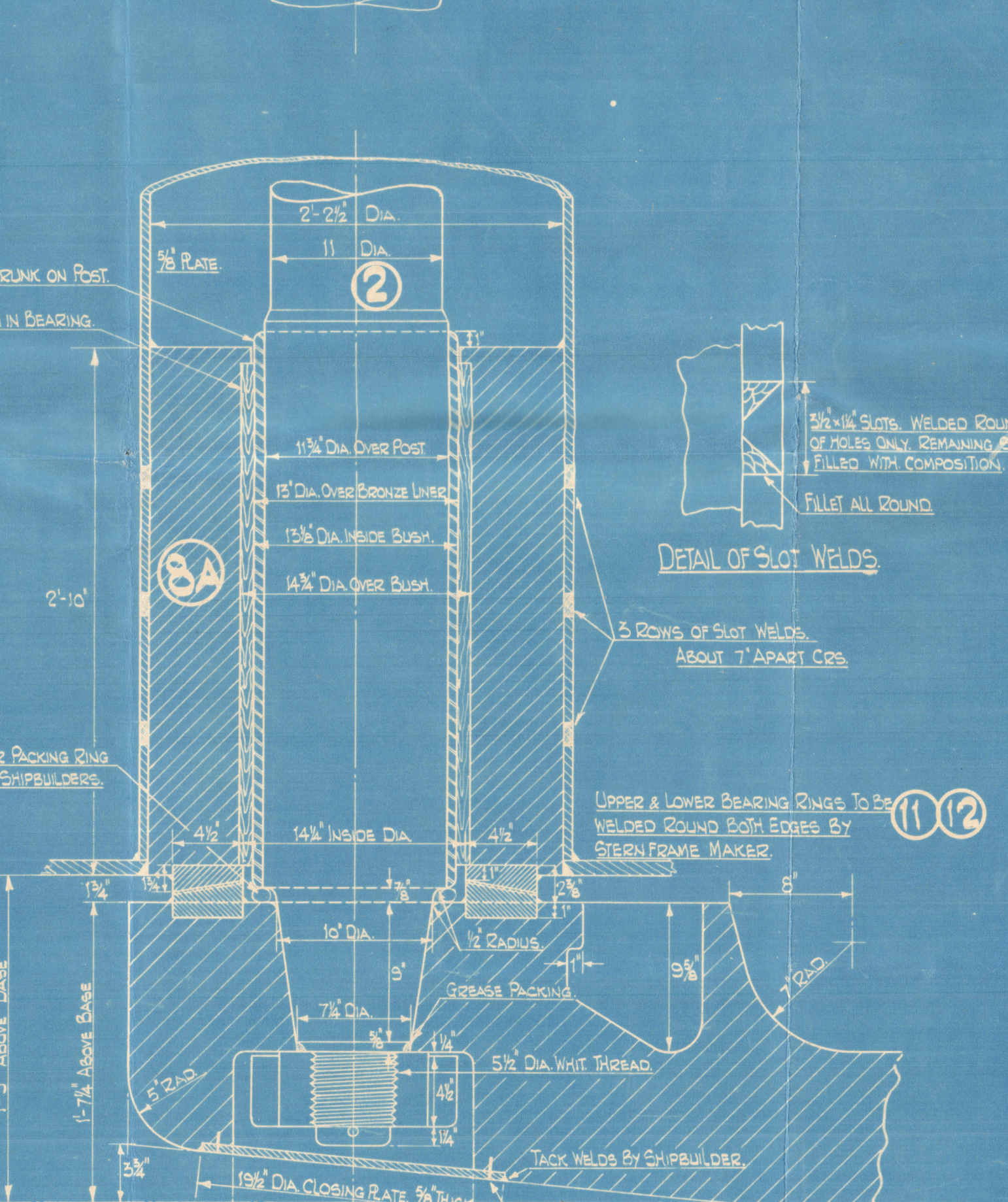
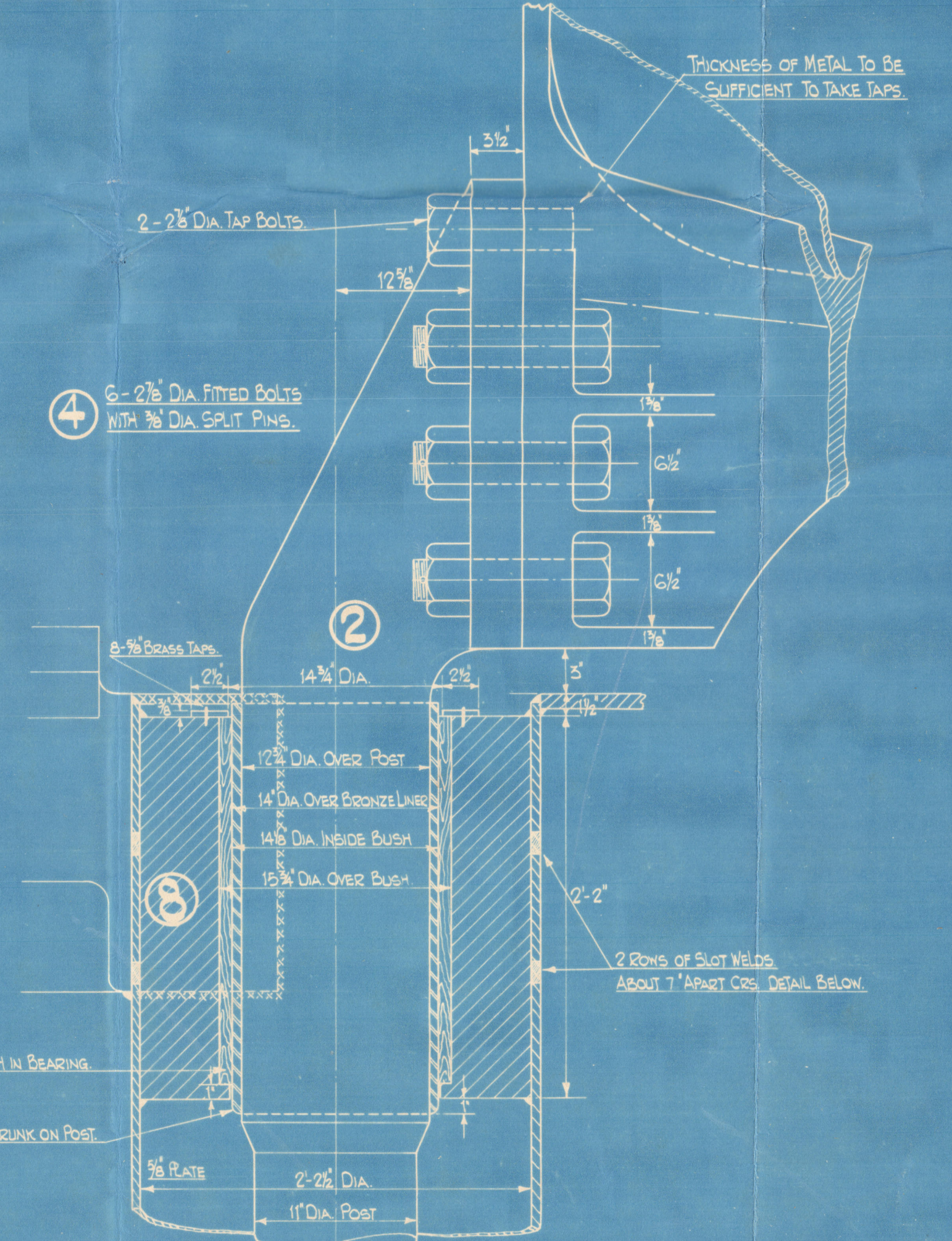
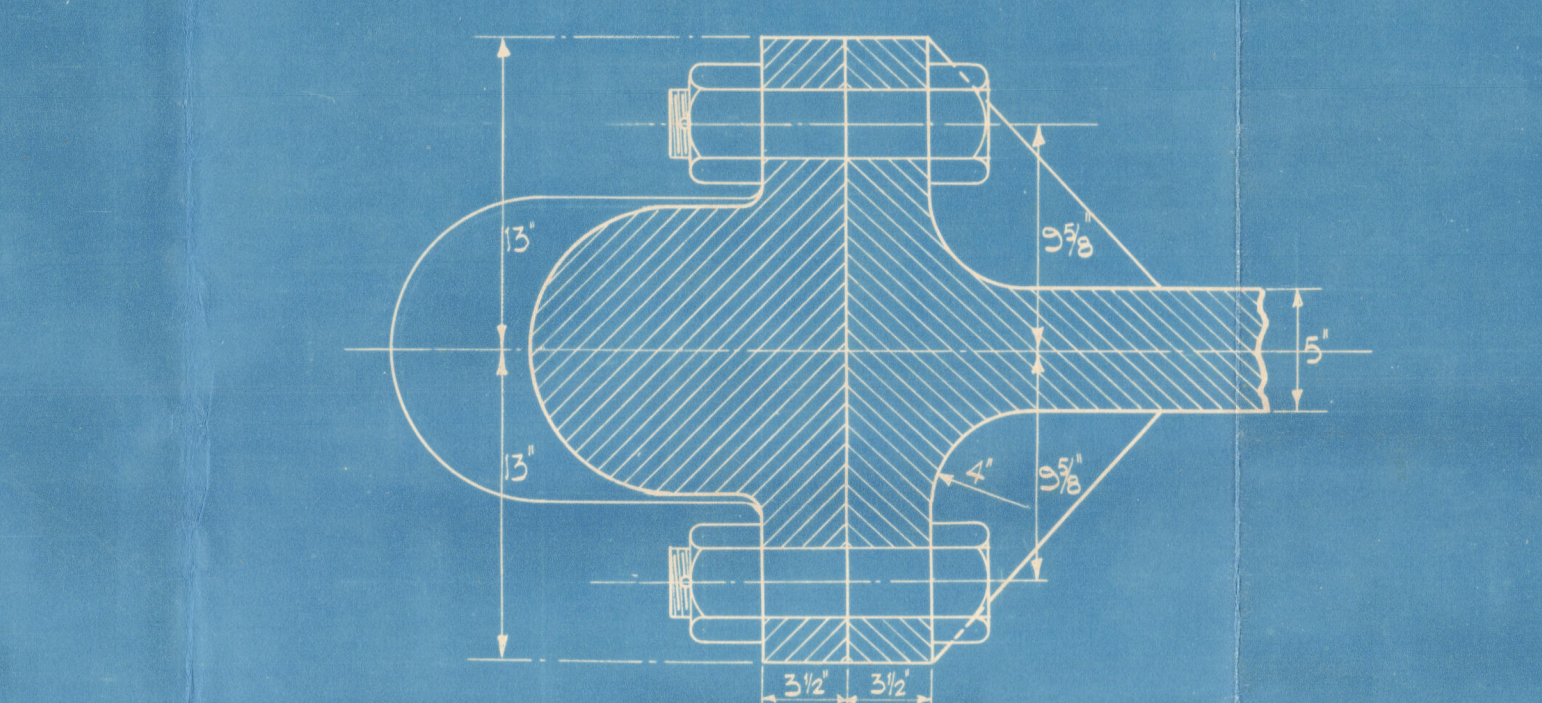
C OF G " " = 1

A x D " " = 38

A x D OF WHOLE RUDDER = 476 - 38 = 438

STOCK PER RULES = 10625 (TANKER) + 11587

+ OWNERS EXTRA = 128" DIA ACTUALLY FITTED

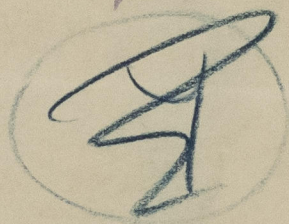




FURNESS 445/6 - cancelled.

STERN FRAME & RUDDER.

"SAN SALVADOR" ★

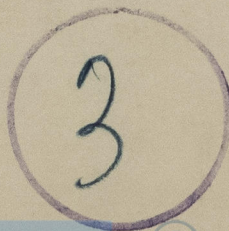


Note. This plan was submitted direct to London by Messrs Furness without the latter advising this office that it had been submitted. This plan was sent to us from London with a copy of the letter sent by London direct to Messrs Furness. J.P.S.

See later plan dated 10.2.49  
embodysing changes on planter.

MIDDLESBROUGH  
REPORT No. 19279

RECORDS DEPT.  
LONDON



© 2020

Lloyd's Register  
Foundation

005321-005324-0003