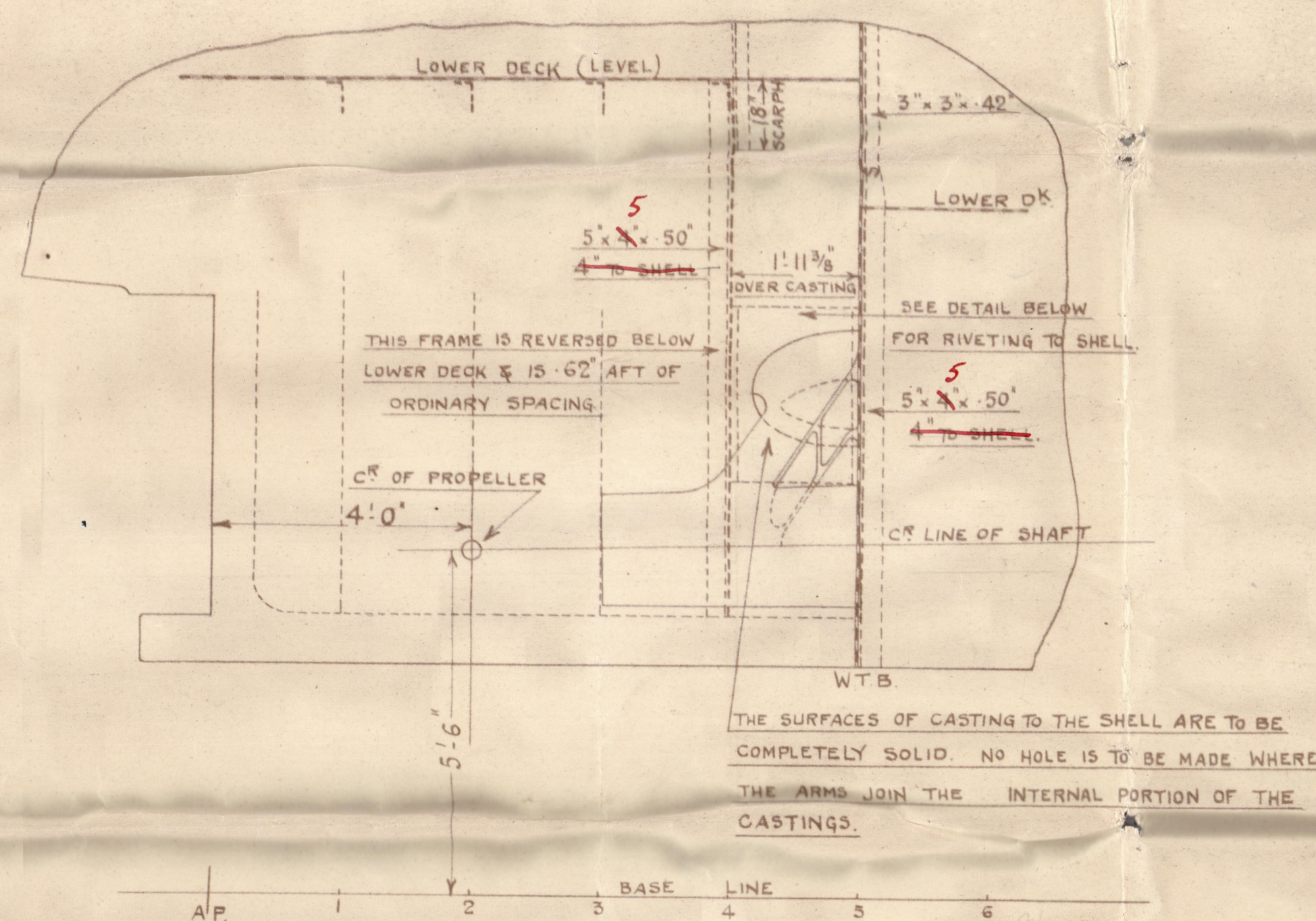
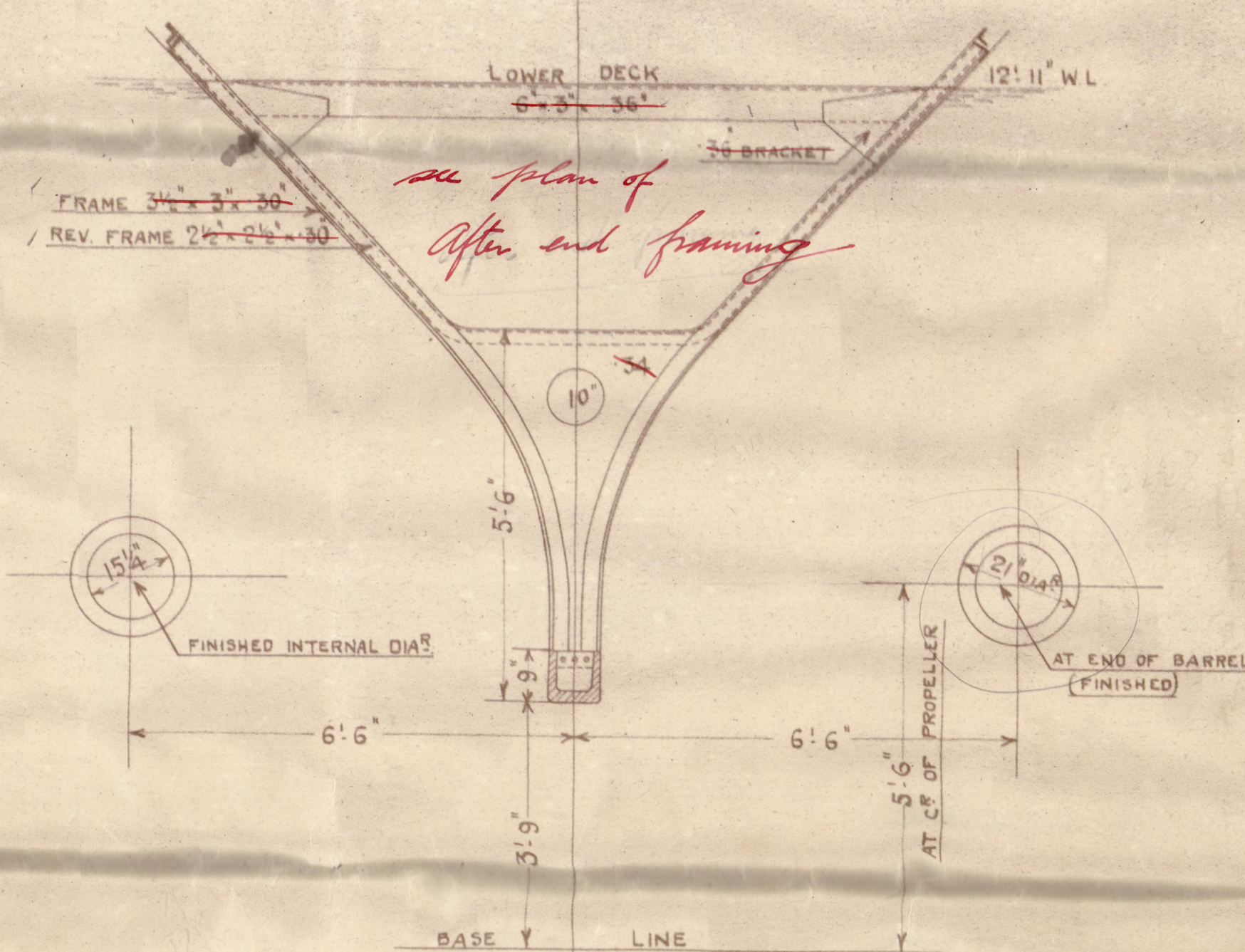


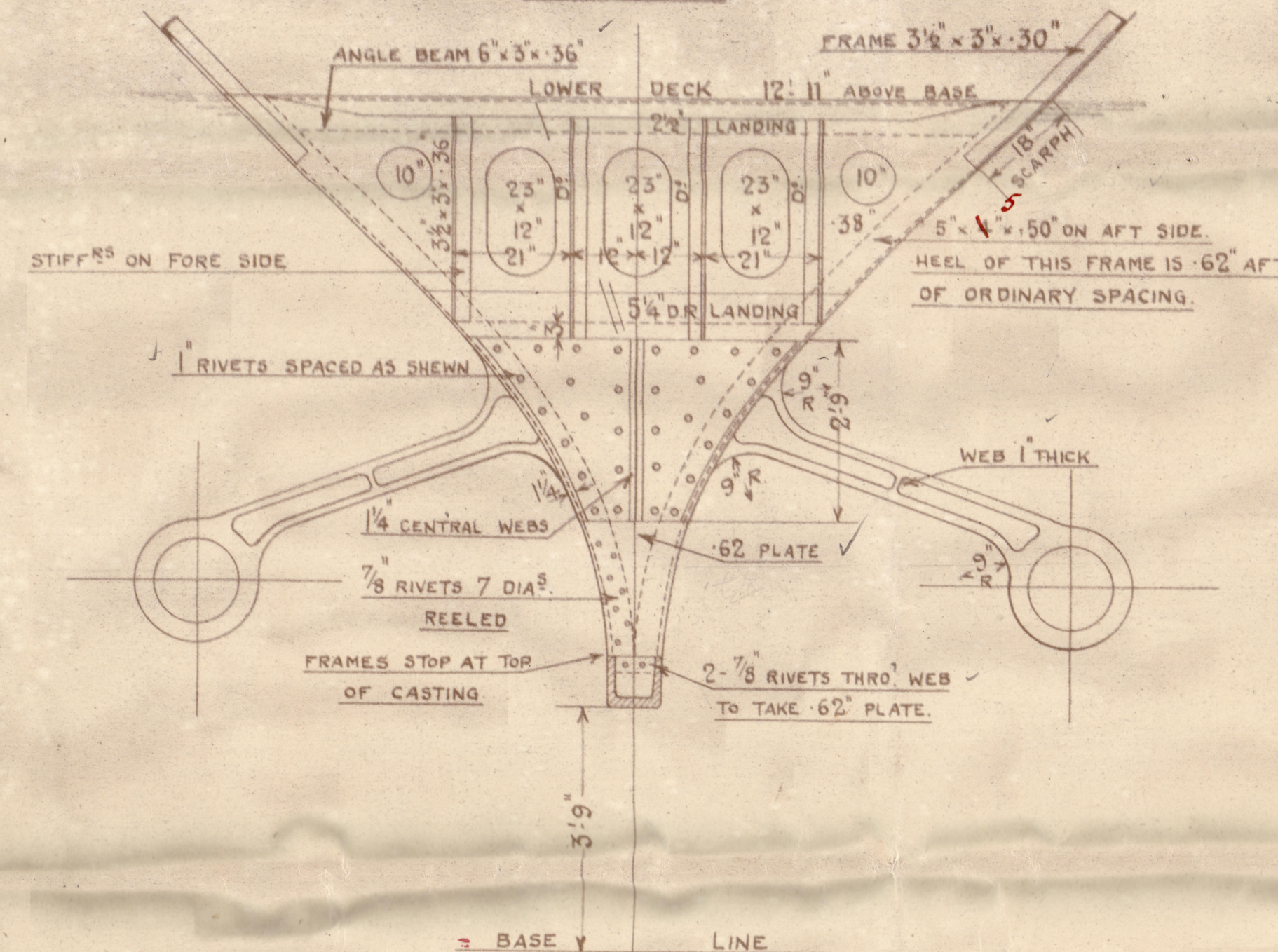
LOOKING TO PORT.



LOOKING AFT.



LOOKING AFT



SHAFT BRACKETS.

SCALE $\frac{1}{2}'' = 1 \text{ FOOT.}$

PARTICULARS.

CR OF PROPELLER IS 4'0" FROM? OF A.P. (STERNPOST)

CR LINE OF SHAFT IS 5'6" ABOVE BASE.

" " " " " 6'6" FROM MIDDLE LINE OF SHIP.

" " " " " 7'6" ABOVE BASE.

" " " " " 6'6" FROM MIDDLE LINE OF SHIP.

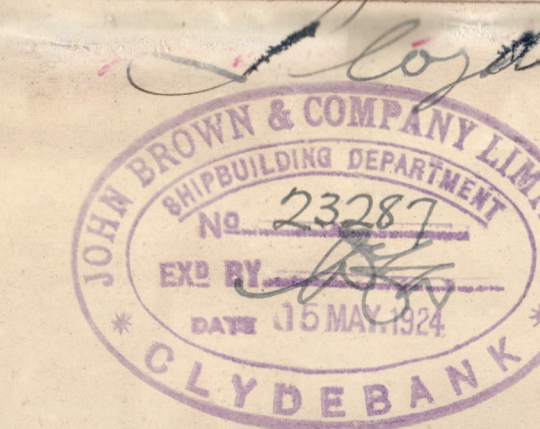
AT CR OF PROPELLER.

AT FRAME 48

DIA^R OF TAIL SHAFT IN WAY OF SHAFT BRACKET IS 10½"

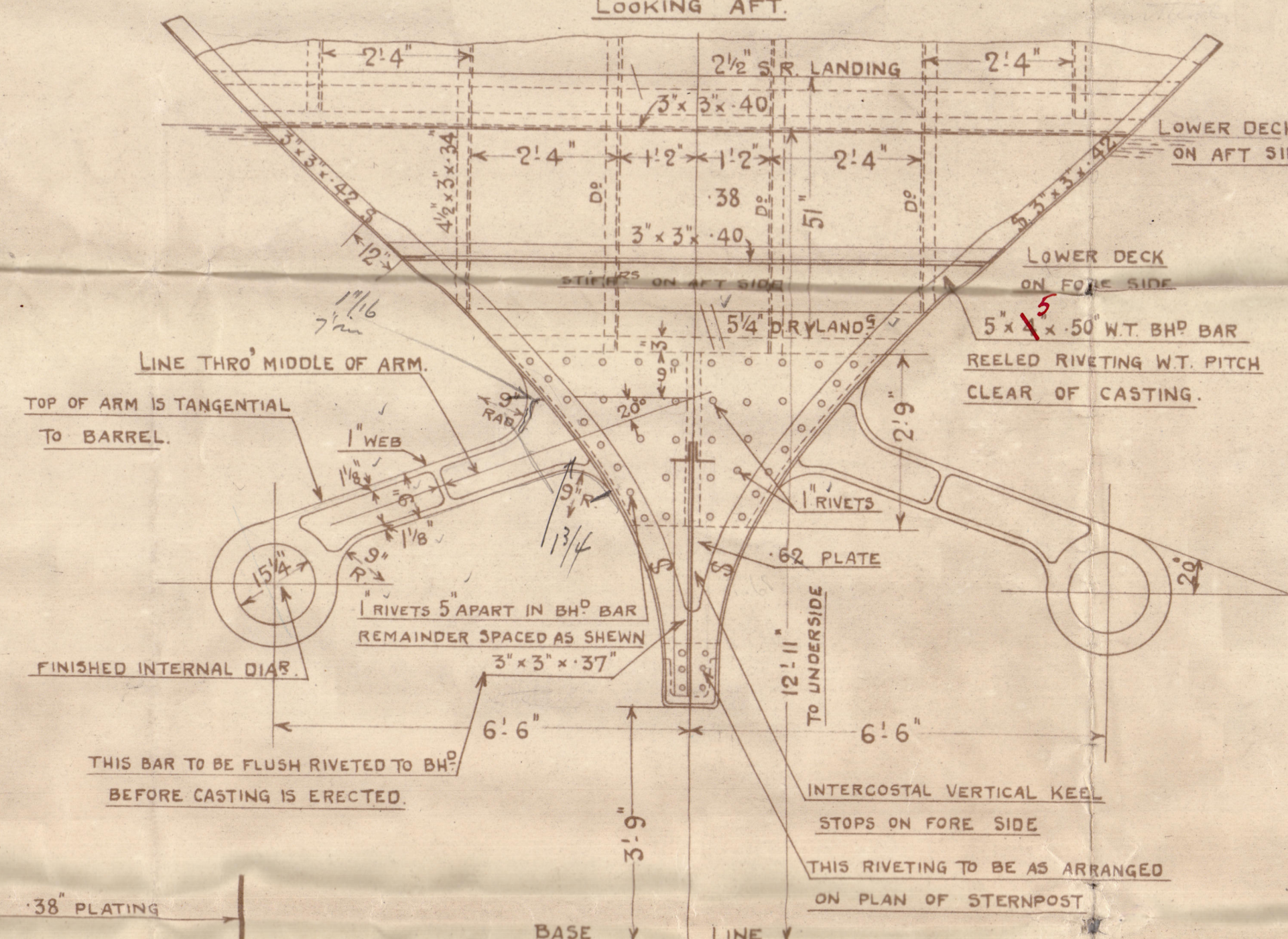
SHAFT BRACKETS TO BE OF CAST STEEL AND TO PASS LLOYD'S TESTS
AND REQUIREMENTS.

ALL RIVET HOLES TO BE BORED BY CONTRACTORS AT POSITIONS LINED OFF
BY J. BROWN & CO'S REPRESENTATIVE.



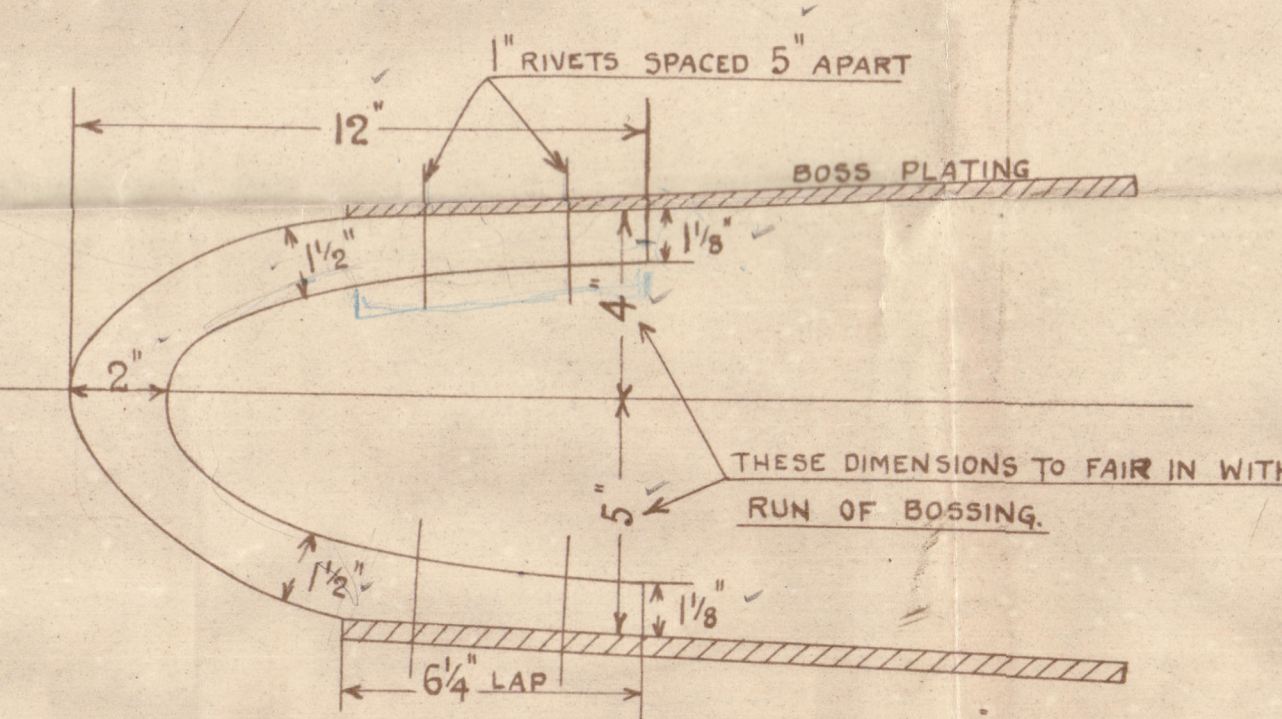
SECTION AT W.T. BH⁹ 5. *Plan of Bulkheads to be submitted*

LOOKING AFT

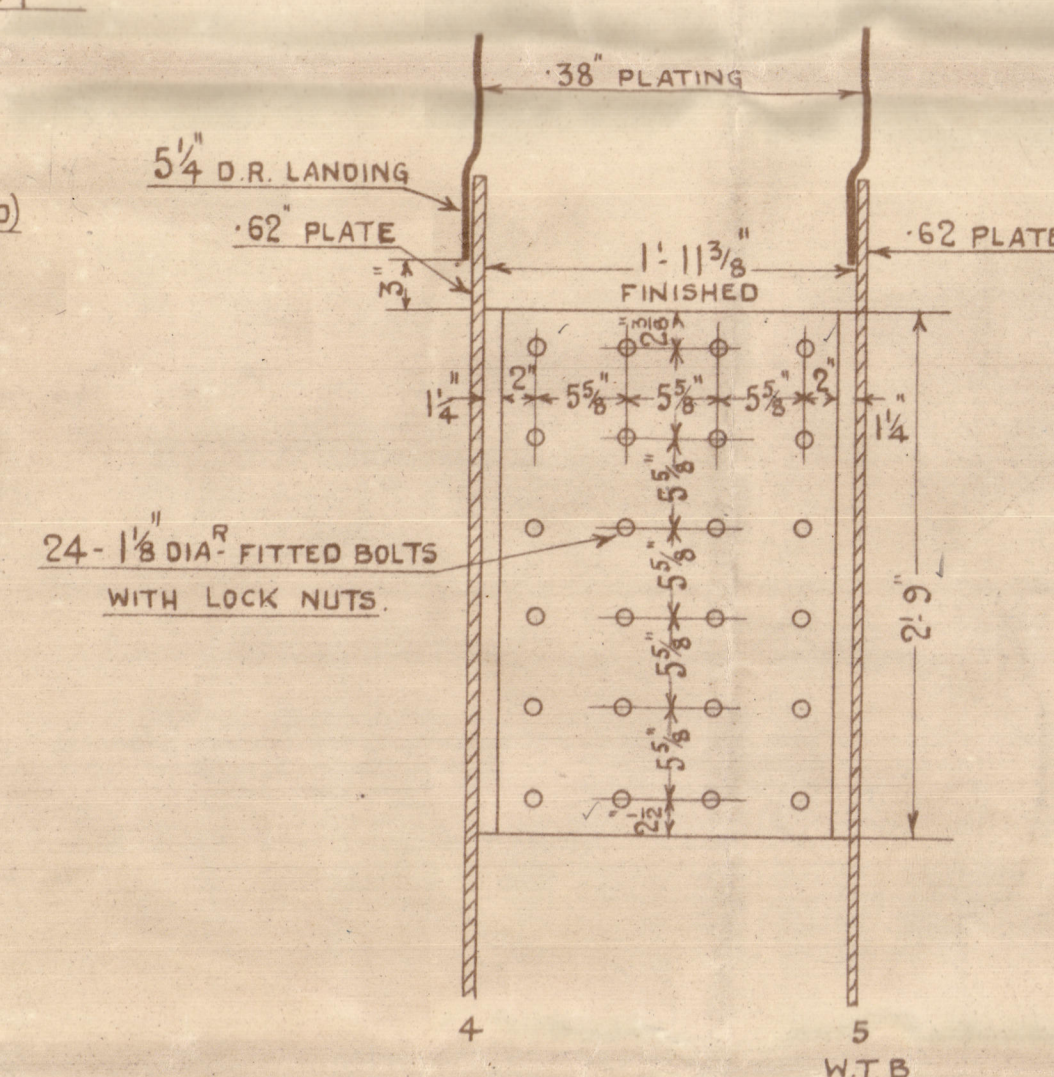
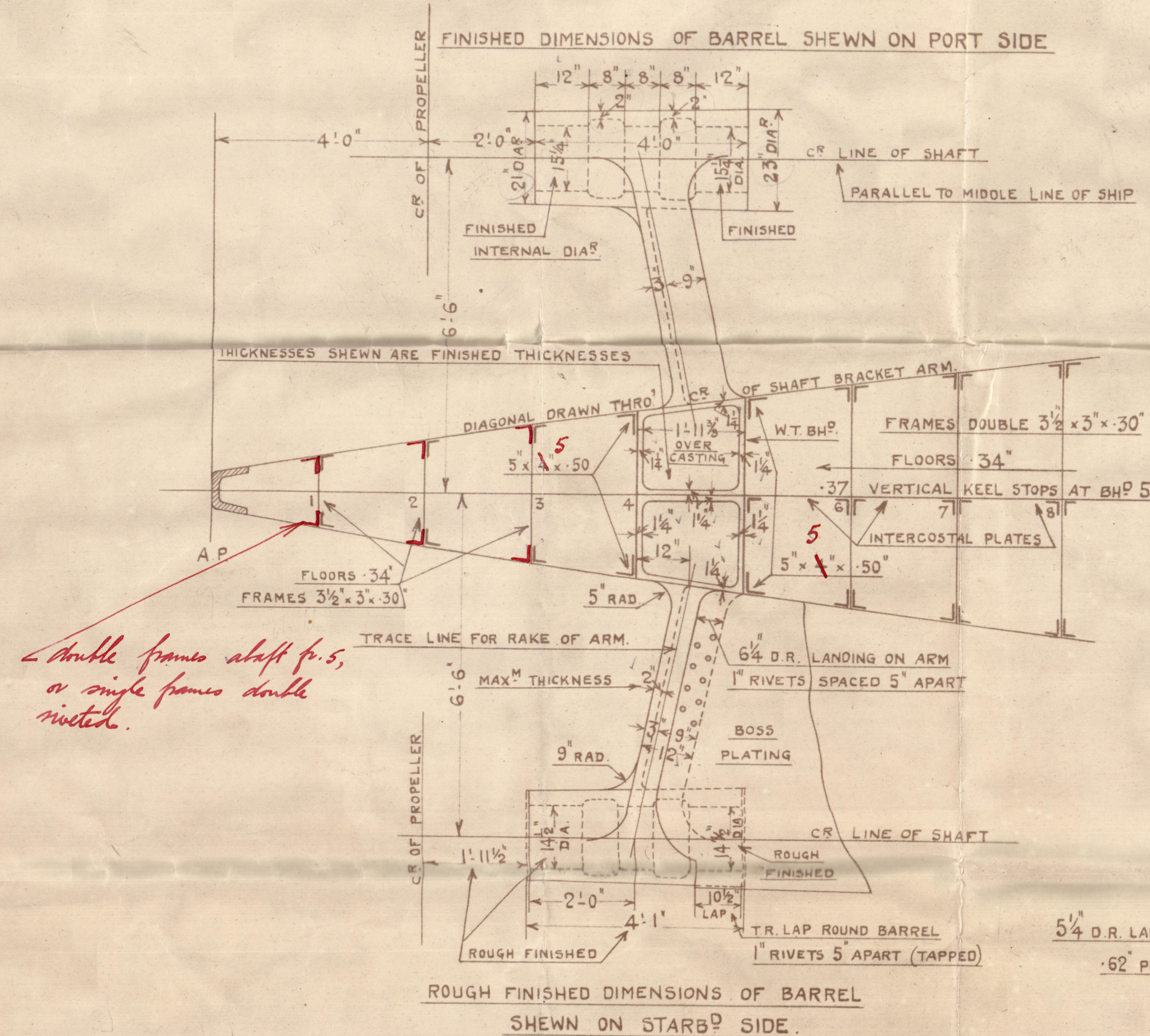


SECTION THRO' SHAFT BRACKET ARM

SCALE 3" = 1 FOOT.



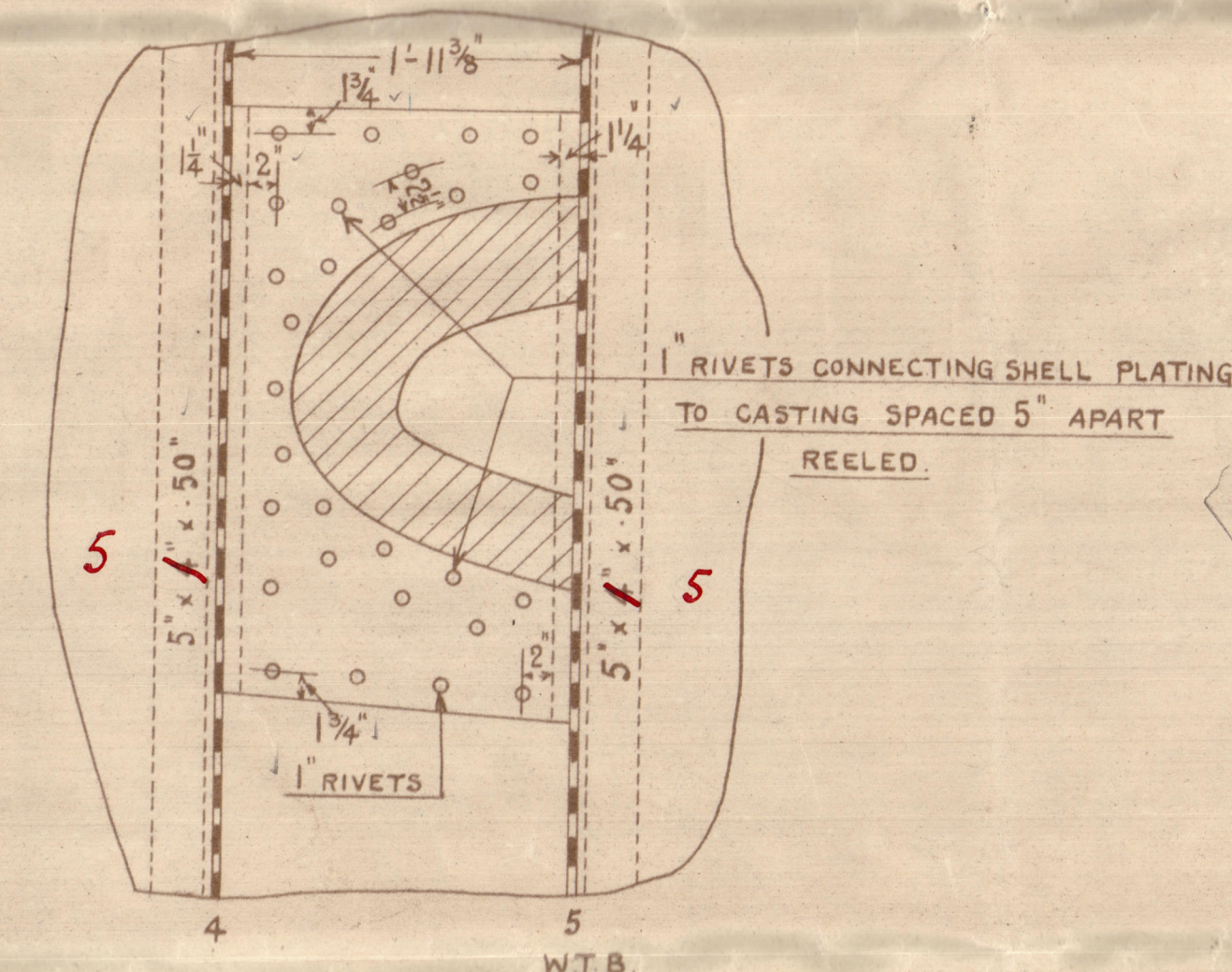
PLAN OF SHAFT BRACKETS.



ELEVATION OF MIDDLE LINE WEBS OF CASTING

SHEWING CONNECTION

SCALE 1" = 1 FOOT.



EXPANSION SHEWING RIVETING OF SHELL

TO CASTING.

SCALE 1" = 1 FOOT.

APPROVED
LLOYD'S REGISTER OF SHIPPING

Montgomery 23.5.24

SHAFT BRACKETS

S-09/10

John Brown & Co

2/2 St Julien

GLASGOW REPORT No. 44631

2/2 St Julien

GLASGOW REPORT No 44737



© 2020

Lloyd's Register
Foundation

005321-005324-0114