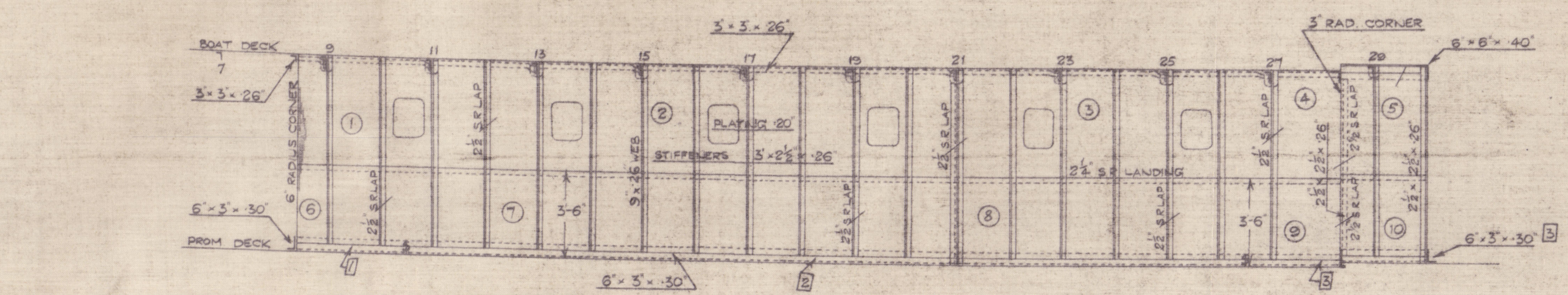


Lloyd

N^os 509-10

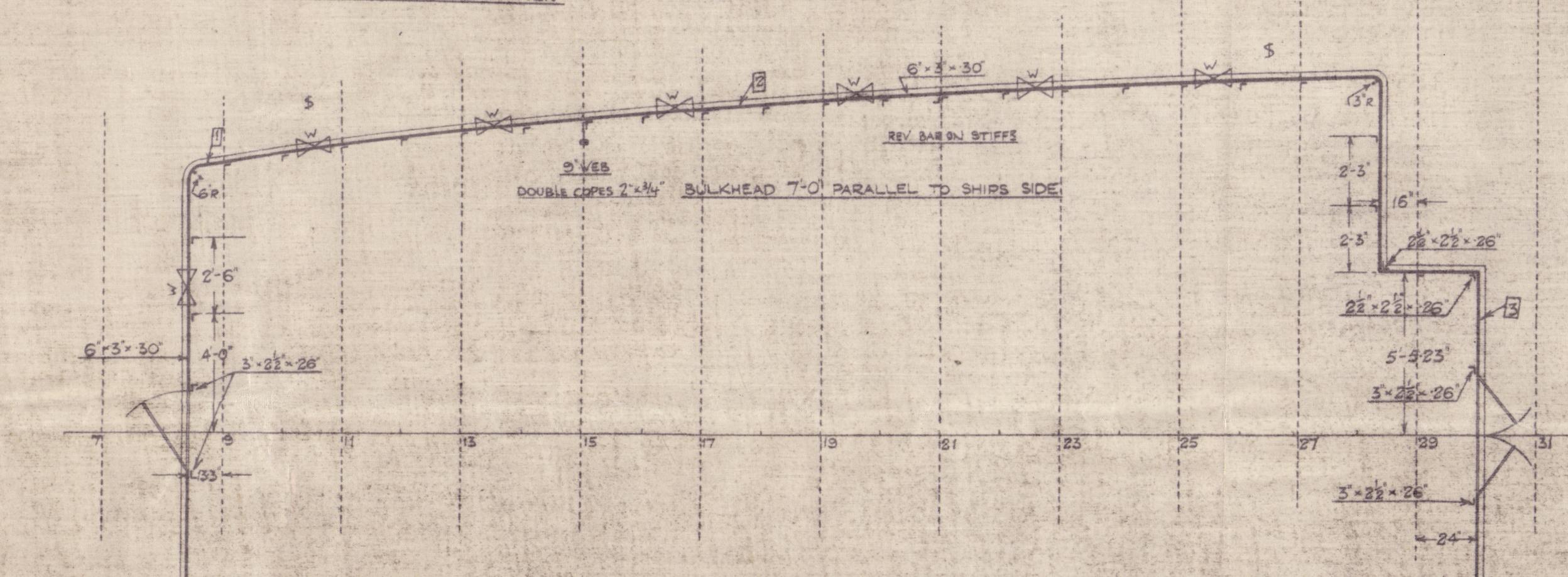
Houses on Promenade Deck

Scale: 1/4 inch = 1 Foot

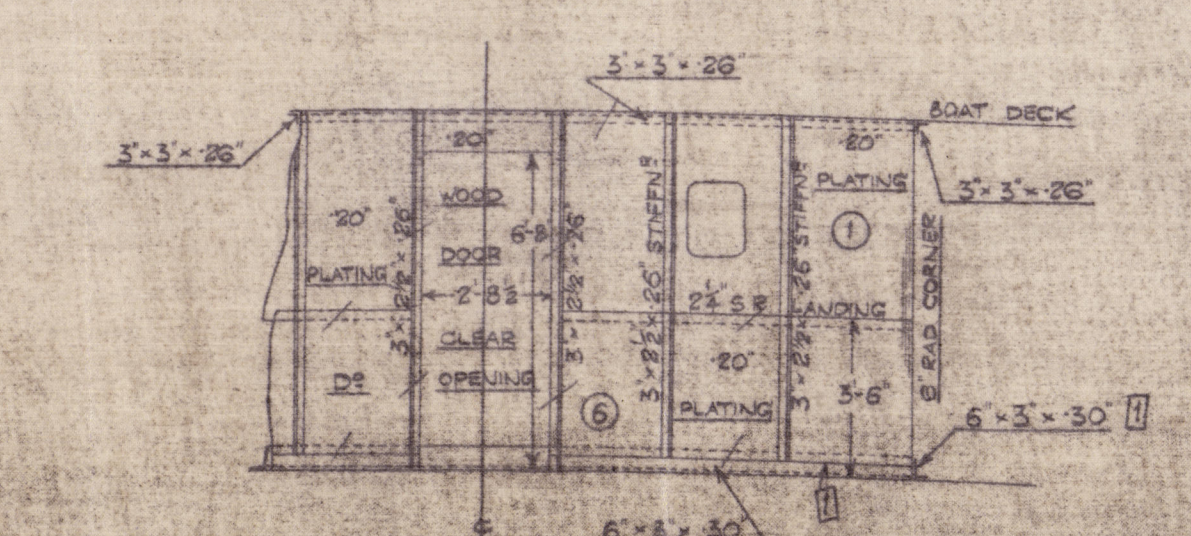


ELEVATION LOOKING TO PORT
(STARBOARD SIDE SIMILAR)

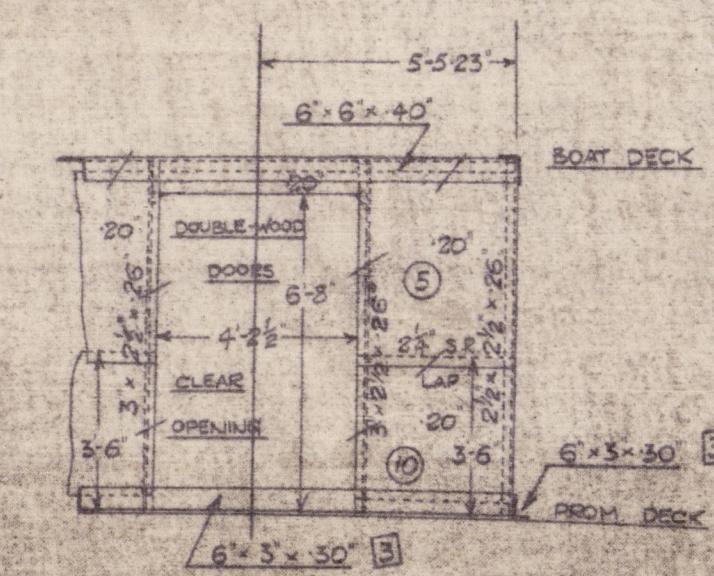
WINDOWS TO BE LINED OFF AT SHIP BY JOINER



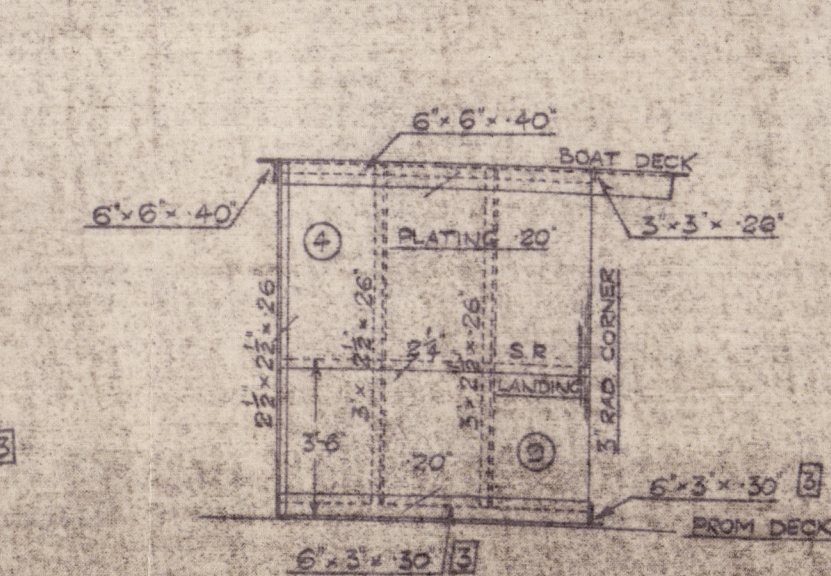
PLAN AT PROMENADE DECK



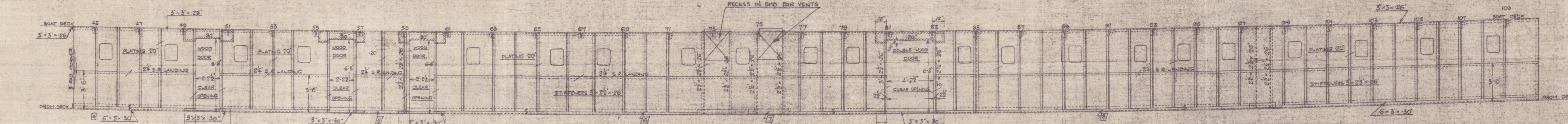
ELEVATION OF BULKHEAD 13'5" AFT OF 9
(LOOKING AFT)



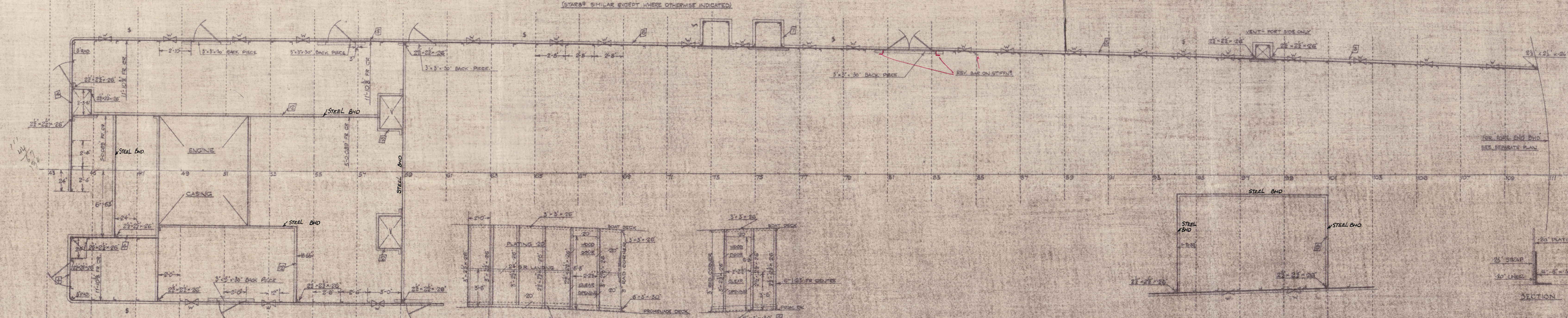
ELEVATION OF BHD AT FR 30
(LOOKING AFT)



ELEVATION OF BHD 15' AFT OF 29
(LOOKING AFT)
(DRAWN FOR PORT-STARBOARD SIDE SIMILAR)

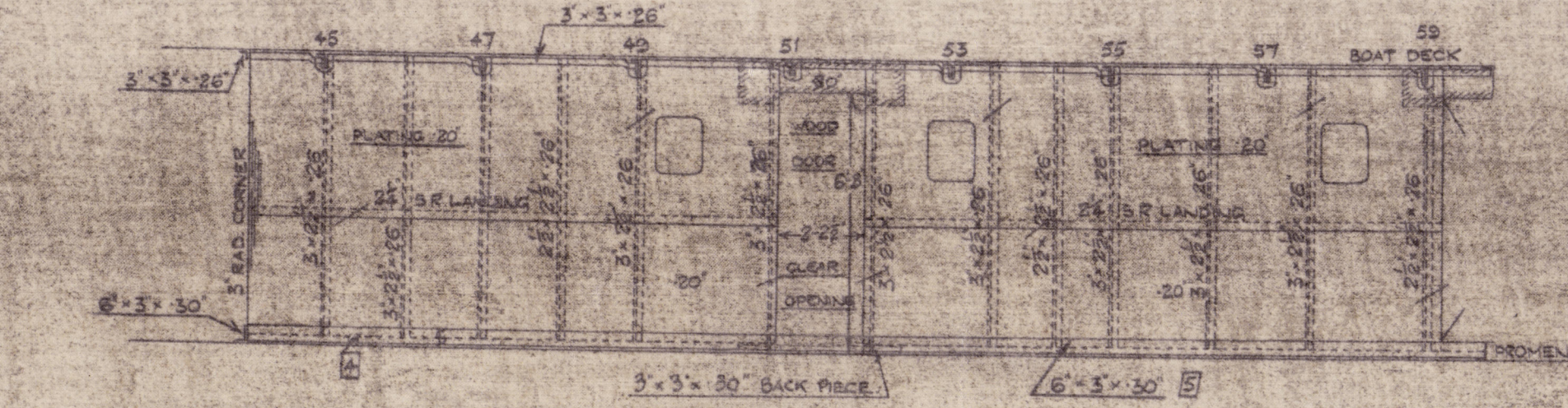


ELEVATION OF HOUSE LOOKING TO PORT
(STARBOARD SIMILAR EXCEPT WHERE OTHERWISE INDICATED)

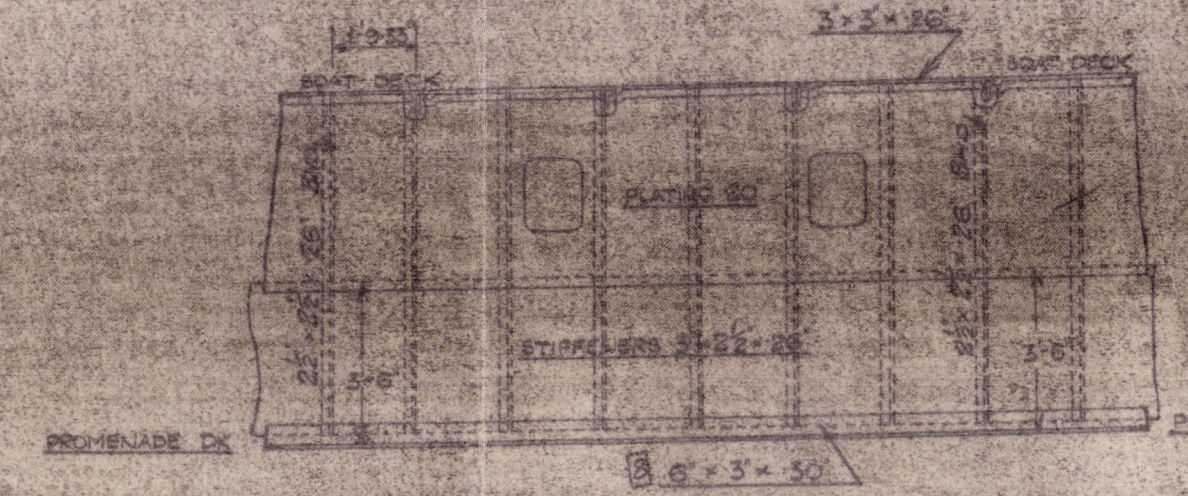


ELEVATION OF BHD FR 44 PORT
(LOOKING AFT)

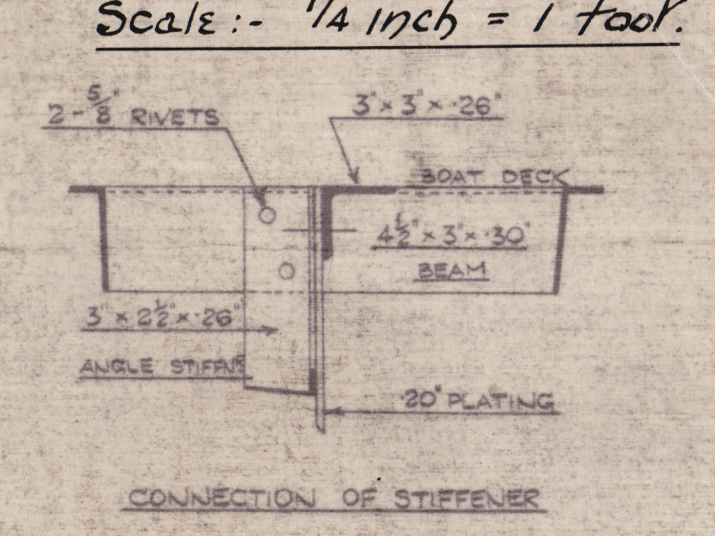
ELEVATION OF BHD FR 42 STARBOARD
(LOOKING AFT)



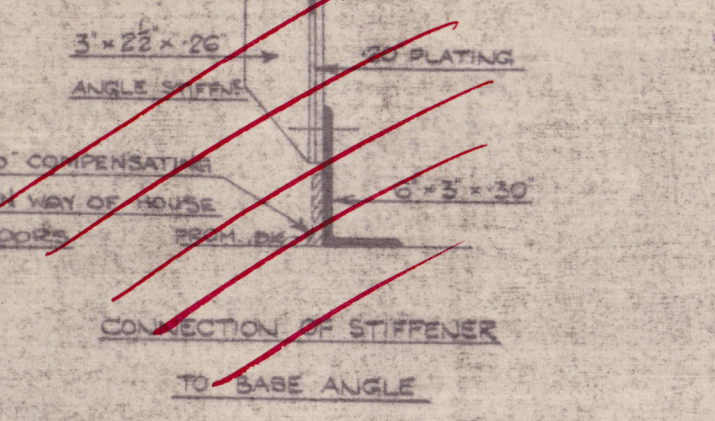
ELEVATION OF BULKHEAD 11'10" TO STARBOARD
(LOOKING TO CENTRE)



ELEVATION OF HOUSE SIDE FR 94-102 STARBOARD
(LOOKING TO CENTRE)



CONNECTION OF STIFFENER
TO BEAM



CONNECTION OF STIFFENER
TO BASE ANGLE



CONNECTION OF STIFFENS TO BEAM AND
BASE ANGLE



STRAP CONNECTION AT BASE ANGLE ENTRY



APPROVED
LLOYD'S REGISTER OF SHIPPING
18/9/24

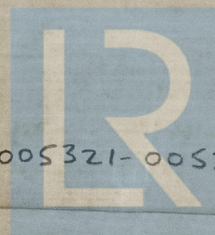
5.5. 509/10

HOUSES ON PROMENADE BECK

JOHN BROWN & CO -
~~~~~

*7/2 St Julien*  
GLASGOW REPORT No 44631

*7/2 St Helier*  
GLASGOW REPORT No 44737



© 2020

005321-005324-0116

Lloyd's Register  
Foundation