

# S.S. "ALEKSANDER I."

## LONGITUDINAL & DECK PLANS

S.S. No 760.

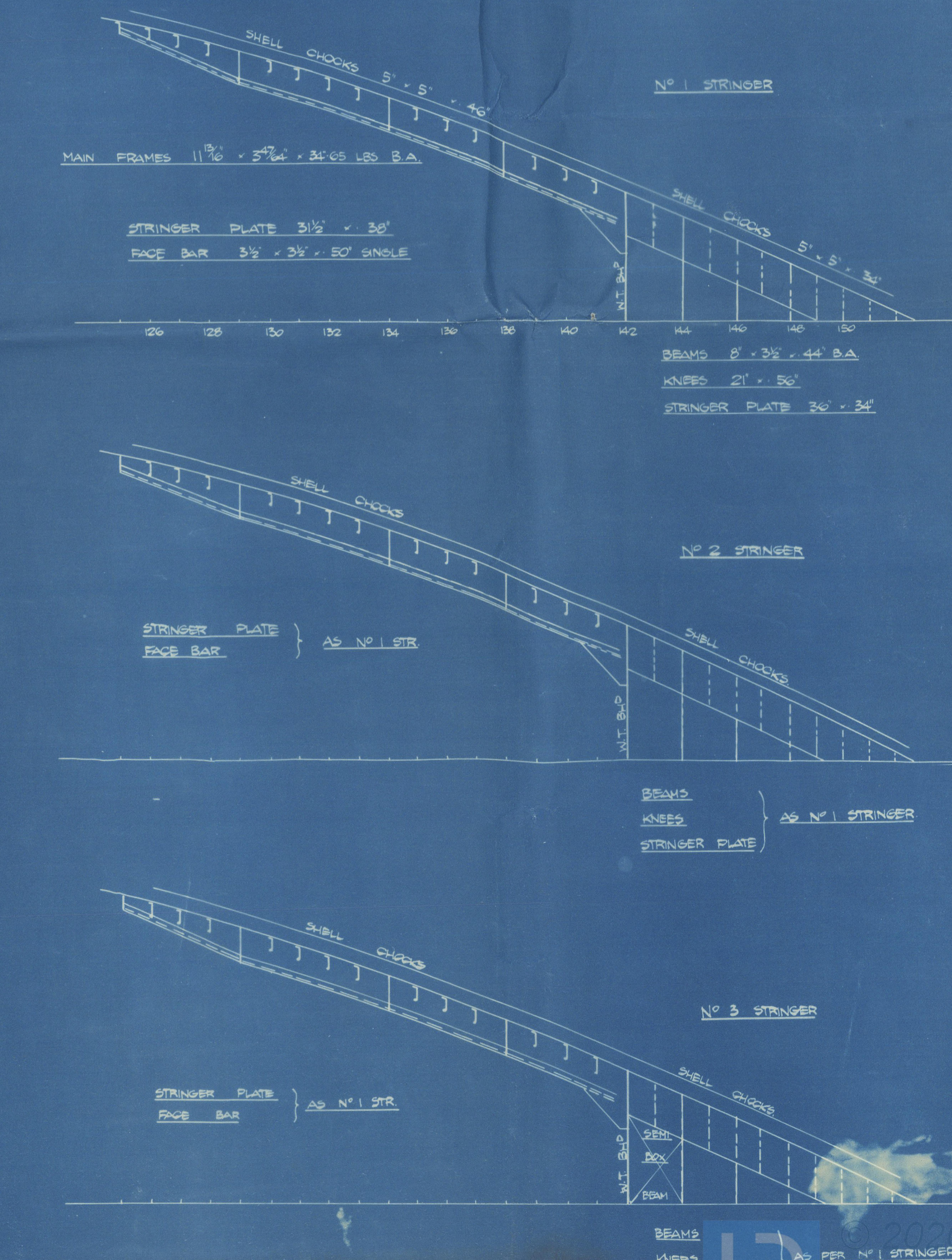
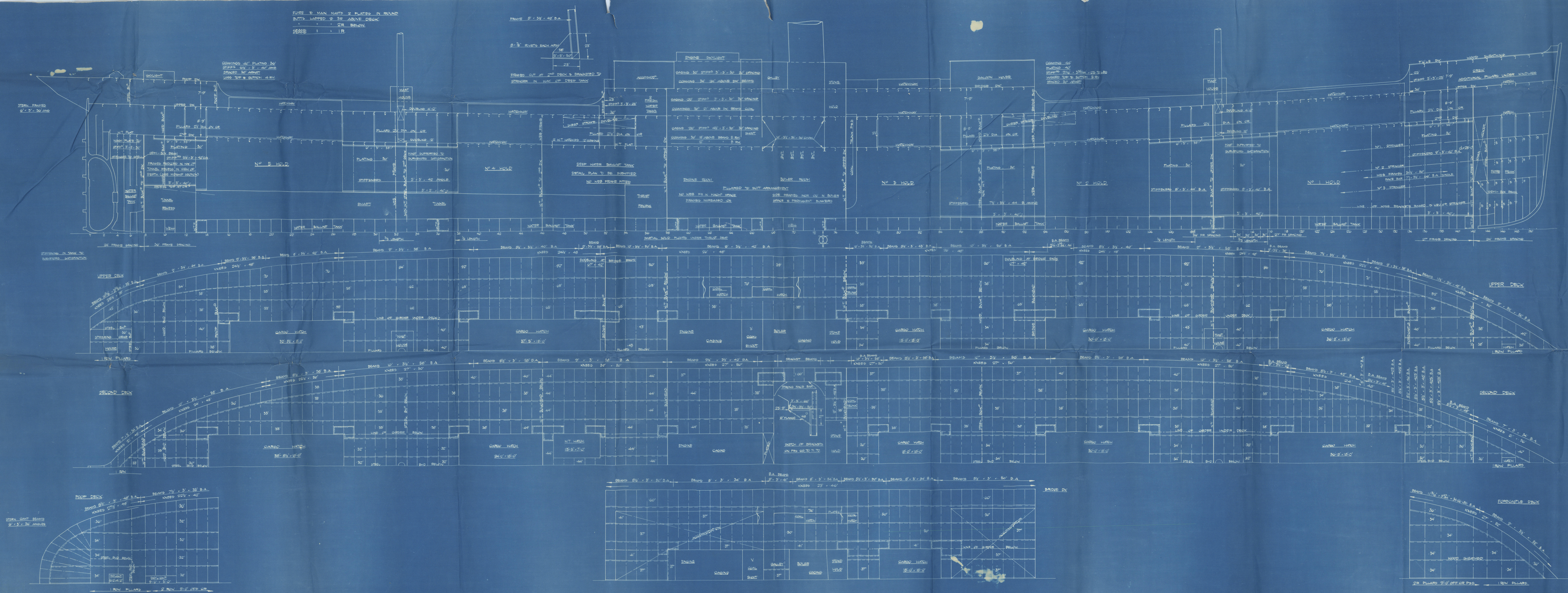
SCALE 1/8" = 1 FT.

DISC - 423.6' BP - 55'-8" HP - 55'-0" EXT. - 3'-38" HP TO UPPER DECK  
TO CLASS 100A1 AT 11000 SPEED SURVEY

THE DIMENSIONS & DETAILS OF CONSTRUCTION NOTED HEREIN ARE SUBMITTED ON THE UNDERSTANDING THAT THEY ARE THE MINIMUM WHICH WILL BE ACCEPTED FOR CLASS & IF NOT THEY ARE TO BE AMENDED, ERROR IS OMISSIONS EXCEPTED.

PLAN OF GIRDERS, PLATES & LATCHES TO BE SUBMITTED  
BOTH STEERING FORWARD & AHEAD

SHEER FOR	136'
" 1/2" FOR	75'
" 1/4" FOR	69'
" 1/8" FOR	57'
TONNAGE OVER AHT	77
CUMBER	140'



LITHGOWS LTD

Nº 760

S. S. "ALEKSANDAR I"

PROFILE & DECKS.  
(AS BUILT).

Grunock Report Nº 18702.

17.

RETAIN

© 2020

005344-005352-0002

005344-005352-0002

Naval Records  
Foundation