

GRAPHIC ADDRESSES:
D PUMP, PHONE.
PUMP, SOWEST.

TELEPHONE NUMBERS:
BEDFORD N° 2201
LONDON 3181 VICTORIA.

W. H. ALLEN SONS & COMPANY LTD

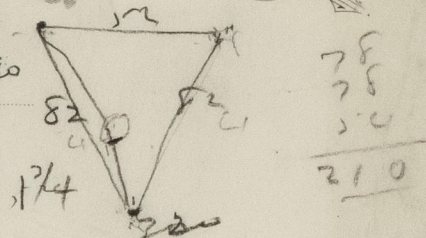
QUEENS ENGINEERING WORKS, BEDFORD.

LONDON OFFICE:
VICTORIA STREET,
WESTMINSTER
S.W.1.

Your reference.

In reply please quote

COPY OF ORDER.



612
29

Messrs. Towler & Son, Ltd.,
Riverbank Works,
Sugar House Lane,
Stratford,
London, E.15.

4th May, 1933.

K1/38235.

612/29.,

THREE Mild Steel Riveted Air Receivers all in accordance with the particulars given on our Print No. K2/83587, Item No. 8.

To be 7'0" high x 1'9" ext. diameter, with inlet and outlet pads in accordance with our requirements and complete with blank flange for top connection and three bolting down lugs all in accordance with our drawing.

To be suitable for 300 lbs. per sq. in. working pressure and tested to 500 lbs. per sq. in. hydraulic.

To be made in accordance with Lloyds requirements, and subject to inspection and tests.

Shell 7/16" and ends 9/16" thick.

To be a thoroughly good job in all respects.

Delivery
required

END OF JUNE.

(Signed) C. Lewington.

For W. H. ALLEN SONS & COMPANY LTD.

005353-005357-0008